

Police Crime Sentencing and Courts Act 2022

Serious Violence Duty Strategy

London Borough of Waltham Forest

Introduction

This Strategy document has been produced as part of the requirements of the Serious Violence Duty, introduced by the Police Crime Sentencing and Courts Act 2022.

The duty places several requirements upon local areas, including agreeing a local partnership arrangement to lead on the duty, agreeing a definition of serious violence, having consistent data sharing, analytical processes to produce a Strategic Needs Assessment, and production of a Strategy to set out how the duty will be implemented locally.

The Duty requires specified authorities to work together to prevent and reduce serious violence, including identifying the kinds of serious violence that occur in the area, the causes of that violence, and to prepare and implement a strategy for preventing and reducing serious violence.

The responsible authorities (also known as 'duty holders') in the Serious Violence Duty will be:

- the police
- fire and rescue authorities
- justice organisations (youth offending teams and probation services)
- health bodies (Integrated Care Boards)
- local authorities

Educational institutions, prisons and youth custodial institutions will be under a separate duty to co-operate with duty holders, but they are not duty holders.

This strategy takes account of guidance issued by the government, as well as London guidance, developed by the London Violence Reduction Unit, in collaboration with London Councils, the Mayor's Office for Policing and Crime, the Metropolitan Police, NHS London and Probation Service.

The strategy sets out the agreed definition of Serious Violence for the borough, summarises the key aspects of the Serious Violence Strategic Needs Assessment, the partnership arrangements that have been agreed locally to lead on delivery of the duty, the areas of activity to prevent and reduce serious violence, and activity to engage with voluntary sector organisations, communities - including young people, as well as businesses.

Definition of Serious Violence

The Police Crime Sentencing and Courts Act 2022 provides that, for the purposes of the Duty, serious violence includes domestic abuse, sexual offences, violence against property and threats of violence, but does not include terrorism.

In considering serious violence within their area, specified authorities should encompass serious violence as defined for the purposes of the Government's Serious Violence Strategy and include a focus on issues such as public space youth violence. The Government's Serious Violence Strategy sets out specific types of crime of concern, including homicide, violence against the person which may include both knife crime and gun crime, and areas of criminality where serious violence or its threat is inherent, such as in county lines drug dealing. These crimes should be at the core of the serious violence duty for the purpose of its reduction and prevention.

Whilst the government guidance sets out types of violence that should be incorporated within the definition of serious violence, there is no definition provided and it allows each local area to define serious violence.

It is important that there is consistency across London, to ensure that analysis of violence and the Strategic Needs Assessment are comprehensive and comply with the duty. The London Violence Reduction Unit has therefore collaborated with the Mayor's Office for Policing and Crime, London Councils, the Metropolitan Police Service, NHS London and Probation Service to develop London Guidance to support local areas in how they implement the duty. In addition, and to support with consistency across London the London Guidance advises that Serious for the purpose of the Serious Violence Duty is defined as:

Any violence and exploitation affecting young people under the age of 25, domestic abuse, and sexual violence. Within the context of these types of violence, it encompasses homicide, grievous bodily harm, actual bodily harm, rape, assault by penetration, sexual assault, personal robbery, threats to kill and violence against property caused during the commission of one of these offences.

Domestic abuse is as defined in the Domestic Abuse Act 2021.

In the London Borough of Waltham Forest, we have agreed to adopt this definition of serious violence for the purposes of the Serious Violence Duty.

Local Partnership Arrangements

In the London borough of Waltham Forest, we confirm that we are following the London guidance and the Community Safety Partnership (named locally as Safety Net) will be the lead partnership for ensuring overarching implementation and ensuring compliance with the duty.

In Waltham Forest, Safety Net will lead the partnership and provide overarching governance of compliance with the duty. Safety Net has agreed to use our Violence Reduction Partnership (VRP) as the subgroup to discharge operational implementation of the action plan to deliver our serious violence duty objectives relating to public space youth violence. The Violence Against Women and Girls (VAWG) strategic group will implement the action plan to deliver the duty's objectives related to domestic abuse and sexual violence.

The VRP and VAWG strategic group will be jointly coordinating the violence reduction work in Waltham Forest, and will have oversight of the conceptualisation, implementation and evaluation of project initiatives and activities related to violence reduction and the duty objectives.

Both the VRP and Violence Against Women and Girls (VAWG) strategic group will report directly into Safety Net, which alongside the Safeguarding Children's Board, Safeguarding Adults Board and Health & Wellbeing Board form the Strategic Partnership Boards, led by the Strategic Partnership Executive (SPE). There will be a two-way communication process from VRP/VAWG group to Safety Net. Any matters unable to be resolved through the VRP/VAWG groups will be escalated to Safety Net (fig.1)

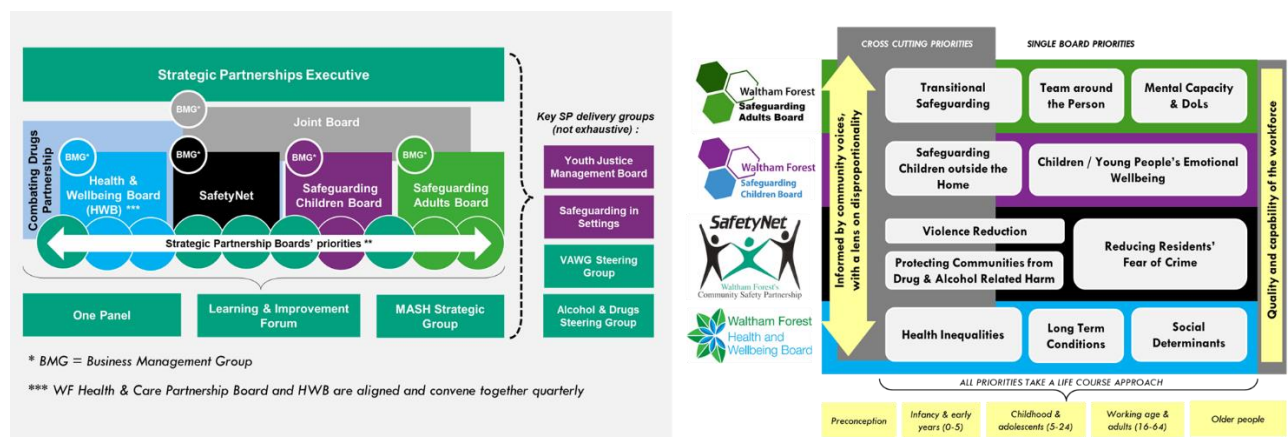


Figure 1: Waltham Forest Strategic Partnership Executive

The Strategic Partnerships Executive and Joint Board enable a unified approach to partnerships which facilitates strategic planning to all the boards and enables the identification of opportunities to undertake cross-cutting work across boards to reduce duplication, increase efficiency and improve outcomes for residents. Reducing violence has been identified as a cross-cutting priority across the strategic partnerships.

Summary of the Serious Violence Needs Assessment

The strategic needs assessment is intended to enable partners to identify current and long-term issues relating to serious violence and those most vulnerable to involvement in the local area. It has looked at the critical areas of violence and vulnerability within the definition of serious violence, including violence affecting those under the age of 25, domestic abuse and sexual violence. The needs assessment provides a greater understanding of established and emerging serious violence trends, priority locations or other high-risk issues.

In assessing each of the critical areas, the analysis has looked at locations that have a higher risk of violence and temporal factors, such as the times of greater and lesser offending, including the times of day, days of the week and seasonal trends through the year. The analysis has also looked at the profile of victims and offenders of violence, in order to understand the risks and opportunities for prevention.

The following is a summary of the needs assessment. The data and analysis here and in the needs assessment extends up to end of June 2023, which was the point at which the development of priorities and actions for the new Serious Violence Strategy began, in advance of the formal statutory deadlines. Since June, we have seen more positive trends on some indicators, particularly for the most serious violence. For example, the significant increase that we had seen in young knife injury victims has reversed to some extent, with rates now more in line with comparators.

Violence affecting those under the age of 25:

- Serious violence is an enduring challenge in Waltham Forest: there were a total of 2,121 serious violence offences in the last 12 months (ending June 2023), with 830 of these (39%) involving a victim aged under 25. This is a total rate of almost 6 serious violent offences in the borough every day, on average.
- However, overall and across most forms of serious violence, Waltham Forest has a relatively low rate of recorded offences, being 19% lower and 4th lowest when compared to a group of 15 other similar London Boroughs. The overall trend in these offences is also generally more positive in Waltham Forest, with a decrease of -2% year-on-year compared to an increase of +6% across other similar Boroughs. Decreases are notable particularly for personal robbery (down -16% from 653 to 565 in Waltham Forest but +18% in other areas) and grievous bodily harm (down -9% from 327 to 299 compared to -4% elsewhere)
- Although Waltham Forest has a relatively low rate of recorded serious violence offences overall, there are some notable exceptions to this, particularly for the most serious violence:
 - For knife injuries, Waltham Forest has seen an increase from 98 to 133 offences (+36%) in the last 12 months (ending May 2023), with a rate now 13% higher than in other similar Boroughs.

- For young people (knife injury victims aged under 25), the difference is starker: up from 37 to 57 (+54%) year-on-year and 30% higher than other similar boroughs.
- In addition, in the previous 12 months, Waltham Forest a total of 8 murders, including 2 teenagers.
- There are seasonal and temporal peaks in serious violence overall, with higher rates particularly from May to July, when the total number of offences is around 30% higher than in the winter months.
- For young people (under 18s), serious violence overall is strongly associated with the school day: 71% of offences with a victim aged under 18 occur on a school day (while these days account for only 53% of days in the year). More than one-third of serious violence offences on school days occur in the two hours between 3pm and 5pm.
- For over 18s, violent offences are geographically concentrated in high-footfall town centre and high-street areas, most notably in the centre and south of the borough. For under-18s, violence on school days is more likely around schools and between schools.
- There are racial inequalities in the way serious violence affects young people. For example, two-fifths of young knife injury victims in Waltham Forest in the last 2 years (ending June 2023) were of black ethnicity, while they are less than a quarter of the population (aged 15 to 24).
- Gangs and drugs are an important factor driving the most serious violence. Deprivation, school absence/exclusion and ethnicity are also strongly linked to risks of violence (see MOPAC 'Problem Profile of Violence, Gangs and Young People', September 2022). In Waltham Forest, Havard and Whittaker (2018) suggested that increases in serious street violence are directly linked to the drug business. They describe changes in which the earlier models of neighbourhood gangs evolved into more organised drug sales networks operating beyond the confines of local postcodes, developing towards an economically driven model. The County Lines workforce is becoming younger, decreasing from an average age of 14-15 years to 12-13 years, with some as young as ten (Andell, 2023). Embedded gangs are linked to Serious Organised Crime Groups (including extortion and money laundering) and sometimes shade into the role of middle-market drug brokers (Andell, 2023).

Domestic Abuse:

- The number of Domestic Abuse Offences increased significantly during the pandemic, peaking in the 12 months to May 2021 during which there were 3,118 offences. In Waltham Forest, levels have steadily declined somewhat since then – levelling out to reach 2,745 in the 12 months to June 2023. Similar decreases have not been seen across other similar London boroughs. As a result, the rate of offences has fallen 11% below the London average and 17% below that of statistical neighbours.

- The trend is similar for Domestic Abuse Violence with Injury offences where the respective rates are -10% and -16% below the respective comparator. For Domestic Abuse incidents (where the police are called but no offence is committed), rates are slightly more closely aligned with peers.
- One-third of Domestic Abuse offences occur on the weekends and they're more likely to be committed in the late evening and early morning compared to other offences.
- The rate of victims is highest amongst 18 to 24 year-olds (19.7 per 1,000), which is just over double the rate across all age groups.

Sexual Violence

- There were 624 sexual offences (major category) in the 12 months to June 2023, down -1% year-on-year. The rate of these offences was -18% below the London average and -10% below that of statistical neighbours over the same period.
- Looking more narrowly at serious sexual violence, we have seen an increase of +8% year-on-year, with 294 offences compared to 271 in the previous 12 months to June 2022. However, the difference between Waltham Forest and other boroughs is greater than for all sexual offences: -28% below the London average and -23% below that of statistical neighbours.
- Almost 9 in 10 (86%) of the identified victims of serious sexual violence in the borough in the 12 months ending June 2023 were female.
- The rate of victims is highest for under-18s (3.13 victims per 1,000) and lowest for those aged 40+ (0.4 per 1,000). However, under-18s saw a small year-on-year decrease (-2%) while over 40s have seen the largest increase (+74%). The number of 18-24 year old victims has also seen a sizeable increase (+22%), and the change for this age group is significantly different compared to other similar London boroughs (-14%).

Action to Prevent and Reduce Serious Violence

Taking into account the findings of the Strategic Needs Assessment, the local partnership has agreed 6 high level strategic objectives (detailed below) under the broad banner of SVD, for the next 12 months to prevent and reduce serious violence. There are two more detailed action plans that outlines how the strategic objectives will be met. The first focusses on the first three strategic objectives and will be coordinated by the VRP and report into Safety Net. The second will be overseen by the VAWG strategic group and again report directly into Safety Net. Our borough's comprehensive drugs strategy and action plan will also directly contribute to the SVD's broad objectives.

In the development of the SVD strategy the partnerships are also ensuring that we link to existing or developing Waltham Forest strategies, reports and partnerships that are of significance, to ensure consistency in our strategic operation as a council. These include, but are not limited to:

- **Michael Marmot Report**
Violence is a cause and a consequence of health and other inequalities, and we will take a public health approach to tackling it.
- **Sports & Leisure Strategy**
In line with our council-wide approach, we are looking to harness the power of sport in engagement and skills development among priority groups.
- **15-Minute Neighbourhoods**
Reducing fear of crime and violence and accessing services are key cornerstones of the 15 Minute Neighbourhood model, as is having strong working relationships with our partners and the community.
- **Combatting Drugs Partnership**
The Waltham Forest Combatting Drugs Partnership is imminently publishing its Drug Strategy as required by the HM Government strategy From Harm to Hope. This will set out a whole system approach to tackling drug-related harms.
- **Inclusive Growth and Economy Strategy**
An ambitious Inclusive Growth and Economy strategy is currently in development in Waltham Forest, with a vision to establish a thriving economy that gives everyone the opportunity to fulfil their potential and benefit from Waltham Forest's growth within planetary boundaries.
- **Housing Strategy**
The forthcoming Housing Strategy will draw out the role that development of new housing and the management of existing stock can play in ensuring safe and secure communities. The Council is also re-launching its Housing Compact with housing associations active in the borough. This will put community safety at its heart, ensuring that the Council, housing associations and partner agencies support each other in making our communities safer.

Our broad SVD objectives under the SVD banner have been developed with the aim for us:

Our SNA indicates that serious violence is an enduring challenge in Waltham Forest particularly involving victims aged under 25. In particular weapon related violence is a concern for Waltham Forest as a borough. As such our primary goal is to:

1. To have reduced knife and gun crime injuries sustained by those under 25 years of age

In addition, the below are identified as additional SVD objectives which are addressed by separate strategies and relevant plans. These include:

2. Tackling drug-related harm by tackling supply, reducing demand and promoting recovery from drugs.
3. To have improved confidence in statutory partners and fear of crime
4. To have increased the number of referrals of survivors of domestic abuse to MARAC, when compared to the previous year. Take action to rebuild confidence and trust in statutory partners to remove barriers that restrict survivors from accessing services.

5. To have reduced the number incidents of Domestic Abuse which resulted in violence against the person, injury, or homicide. Ensuring systems work to disrupt and tackle perpetrator behaviour; but also provide opportunities for behaviour change.
6. To have ensured that there is a clear process and framework for identification and treatment/ interventions of young people and adults that have demonstrated harmful sexual behaviour, and appropriate pathway for active risk management and safeguarding; to protect communities from harmful sexual behaviour. Evidenced through an increase of referrals and orders when compared to the previous 12 months.

The VAWG strategy and detailed action plan coupled with the comprehensive combatting drug's partnership strategy and action plan, will directly support the delivery of many of the above objectives. As such and as mentioned above the focus of this strategy to P25 will therefore focus on achieving one of our primary objectives, which is to reduce knife and gun crime injuries for those under 25 years.

Engagement with the voluntary and community sectors, young people and Local businesses.

Local communities, the voluntary and community sector (VCS), local businesses and young people have an important role to play in violence reduction. In developing the local strategy to reduce serious violence, we have consulted and engaged as follows:

Residents: (including young people specifically): Throughout the past six months, we have ensured there has been consistent engagement with residents and specifically young people regarding serious violence. To do this, we held a series of interactive youth workshops and citizens panels, with attendees selected that represent the demographics of the whole borough. The Citizens panels are recruited to ensure that they are representative of the borough demographics in Waltham Forest. Young people engaged included our Youth Independent Advisory Group (YIAG); Voices in Partnership (VIP), and Children in Care Council. The latter two groups included young people with lived experience of the criminal justice and care systems respectively.

Statutory and Non-statutory Partners: Numerous meetings and large workshops have been undertaken.

Evidence Based Research: We have grounded our findings on evidence on 'what works'. In particular, we have drawn on the Youth Endowment Fund's toolkit which has synthesised over 2,000 studies to provide an 'Evidence and Gap Map'; the Youth Justice Board's Effective Practice Library; and 'Evidence Based Policing' from The College of Policing.

Other Waltham Forest Specific Learning and Recommendations: We incorporated learning and recommendations from two independent research reports on work to tackle child exploitation and develop hyper-local responses to violence in

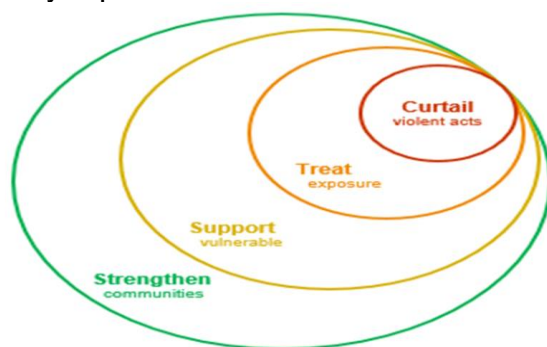
Waltham Forest. The partnership has also drawn on the recommendations from a recent lessons-learned event which undertook a thematic review of 5 recent critical incidents in Waltham Forest.

The whole partnership has undertaken an extensive refresh of our Violence Reduction programme, which utilises a public health approach to ensure our broad SVD objectives are delivered.

The 4 domains of our VRP are as follows:

1. **Curtail** violent acts at source, pursuing perpetrators and enforcing action.
2. **Treat** those who have been exposed to violence to control the spread.
3. **Support** those susceptible to violence due to their exposure to risk factors.
4. **Strengthen** community resilience through a universal approach

Pictorially represented as follows:



During the refresh of our VRP, and the engagement sessions undertaken feedback was captured from partners and residents on the current provision within each domain. A short synopsis of this is detailed below within each domain.

Curtail: The partnership and specifically residents, felt strongly that the 'Curtail' domain needed significantly bolstering, to address some of the key areas identified in our SNA.

Treat: In the treat domain it was assessed that there were several evidenced based interventions to treat those exposed to violence to stop the spread. However, more was needed to empower individuals to be able to support and treat those who are directly impacted by violence such as through first aid training and bleed kits. It was also assessed that evidence-based therapy such as the Eye Movement Desensitization and Reprocessing (EMDR) should be explored for those individuals most impacted by trauma. In addition the need for robust training for professionals and community settings who work with those exposed to trauma to prevent re-traumatising individuals is also identified as a priority within this domain.

Support: In the support domain, again the partnership felt there was a strong offer of interventions and services for those at risk, particularly children. However, the SNA, which highlighted the hot spot areas and times for serious violence being on schools days between 3-5pm, resulted in the partnership exploring the innovative Step Together programme. A bespoke Education Training and Employment Offer embedded within community settings such as our youth hub spaces, the partnership also felt it was important to explore.

Strength: Finally, in the strengthen domain, the partnership felt we have a strong offer once again, however more work needed to be undertaken to support our partnership colleagues, particularly from the VCS. Also, young people in the borough specifically reported the need to be able to report concerns anonymously to their schools and as such we are looking to explore the 'Toot Toot App' being made available to all of the schools in our borough.

Below outlines our current VRP offer on the left and new proposals on the right, informed by our SNA and extensive engagement as part of our VRP refresh:

Public Health Domain	Current Offer	New proposals to deliver on immediately	Additional new proposals being costed and explored for 2024/25
Curtail	<p>Covert and overt joint Police Operations To tackle seasonal planning including summer, autumn and winter nights. To tackle specific offending types such as knife crime and county lines intensification.</p> <p>Integrated Offender Management (IOM) Co-ordinator Waltham Forest Integrated Offender Management (IOM) scheme brings a multiple-agency response to the crime and re-offending threats faced by residents in the borough. The IOM cohort consists of substance misuse and domestic abuse offenders. The IOM Co-ordinator is based within the LA (the post funded through MOPAC) and leads and coordinates the work of the local IOM unit and ensures effective service delivery.</p>	<p>A robust partnership plan to tackle high harm gangs utilising a focussed deterrence approach. The research report completed by Suffolk University which was made available to the Local Authority (LA) in August 2023 (“Waltham Forest Research Report: Co-Production in Addressing Child Criminal Exploitation”) highlights to the fact that within Waltham Forest partnership working is fundamental in addressing gang activity. We recognise that much of the high harm gang activity falls into serious and organised crime and requires a multi-agency approach which can be achieved through adoption of the 4 P’s approach. This is a nationally recognised approach to tackling high harm gang issues with the four strands: Prepare, Prevent, Pursue & Protect. The benefit of utilising the 4P approach is that it allows clear and achievable objectives to be drawn up under each ‘P’, ensuring that a broad range of action is taken, encompassing</p>	<p>Exploration of an embedded gang’s team in the borough. The research report by Suffolk University, mentioned above, suggests as one of its recommendations to Waltham Forest the development of a comprehensive Gangs Strategy and embedding of a dedicated multi-agency gangs’ team in the borough. The researchers involved in the production of the report suggest that this multi-agency Gangs Intervention Team should be developed as part of the Gangs Strategy and their work should be delivered locally through proposed Youth Hubs. In addition, the report put forward that the funding for this group should be ring-fenced, and incentives should be provided to ensure that team members are prepared to make a minimum two-year commitment to the team.</p> <p>Increase CCTV in hot spot areas and outside of schools.</p>

Public Health Domain	Current Offer	New proposals to deliver on immediately	Additional new proposals being costed and explored for 2024/25
		<p>enforcement, diversion, protection of the vulnerable, and judicial restriction.</p> <p>Sophisticated mapping of organised groups and associates The i2 association maps or charts are often utilised to map organised groups and associates. This is a visualisation software that allows law enforcement agencies to define and visualise the links between individuals who have been identified as being associated with or linked to high harm gangs. The i2 charts of high harm gangs allows information to be easily understood and communicated visually. It enables the reader to get a good understanding of the group's composition including gang membership and hierarchy as well as the strength of associations between members. Production of accurate i2 mapping of organised groups and associates emerged repeatedly throughout our engagement exercises with partners.</p> <p>Pro-active introduction of gang injunctions</p>	<p>We understand from the boroughs Structured Needs Assessment (SNA) that there are hotspot times and areas for serious violence activity. The need for increased level of CCTV was very apparent in our engagement exercises, particularly those engagements with residents. As such the partnership wishes to explore applications to pre-emptive and critical incident fun grants so that we can consider additional CCTV particularly outside secondary schools and local hotspots informed by our gap analyses.</p>

Public Health Domain	Current Offer	New proposals to deliver on immediately	Additional new proposals being costed and explored for 2024/25
		<p>Gang injunctions are civil tools that allows the police or a local authority to apply to a county court (or the High Court) for an injunction against an individual who has been involved in gang-related violence. Within Waltham Forest now there seems to be an opportunity to pro-actively make use of these civil orders available to pursue perpetrators but also support with other enforcement actions.</p>	
Treat	<p>Functional Family Therapy (FFT) FFT is an evidence-based family approach meaning that the whole family, significant others and/or any other key players are included in FFT sessions. The work is predominantly undertaken in the family home but can also be delivered elsewhere in the community. It provides intense support to families whereby children are at risk of custody and/or out of home placement many of which have been</p>	<p>Empowerment of frontline practitioners to maximise support for those exposed to violence. Various sources of information have informed this headline action indicating that there is a need for a training plan to be devised and rolled out locally. The Suffolk University report recommended the need for frontline practitioners to receive training on specific tools (i.e., 'Traffic Light' Risk Assessment Instrument), referring specifically to those staff working with gang-involved</p>	<p>Introduction of bleed kits First aid trauma training sessions for young people. The introduction of bleed kits arose from our engagement activities as well as an Evidence Review held in October 2023 at Waltham Forrester. Within this review a recommendation is made for the council to consider installing Bleed Control Kits (BCKs) in key public areas (i.e., hot spot and high footfall areas). Alongside this trauma and first aid training for young people and within</p>

Public Health Domain	Current Offer	New proposals to deliver on immediately	Additional new proposals being costed and explored for 2024/25
	<p>victimised through serious violence or exploitation.</p> <p>Non-Violent Resistance (NVR) Training NVR is a parenting approach, which has been specifically developed for responding effectively to aggressive, violent, self-destructive, and controlling behaviour in children, adolescents, and young adults. Outcome studies have shown that NVR is very effective in improving the behaviour of a large percentage of young people, reducing parents' feelings of helplessness, and raising their confidence, as well as bringing about a more peaceful atmosphere all round in the family.</p> <p>Delivery of the 'Your Choice' programme to YJS children Your Choice is a pan-London pro-social Violence Reduction Programme. The programme uses psychologically informed, Cognitive Behavioural Therapy (CBT) tools and techniques. It is delivered to YJS involved children and aims to empower young people by</p>	<p>or at risk of gang involvement individuals. In addition and talking more broadly around training needs some of the initial findings and recommendations of an ongoing review into serious violence incidents, suggests that any training plans being considered for frontline staff working with individuals affected by violence, should include at a minimum training on using a trauma-informed approach, adultification of children and general mental awareness.</p>	<p>community organisations is identified as an activity which is needed. Through inclusion of this activity in the SVD plan there is a framework whereby it can be ascertained how often and regular these training sessions are being delivered and enable follow up work needed alongside schools and others to address any gaps.</p> <p>Explore mentors with lived experience, being embedded within Police custody suites. The need to maximise on Reachable/Detachable moments emerged from our engagement exercises with a new suggestion being put forward in relation to having mentors with lived experience based in police stations which may provide an opportunity to engage individuals. This is because it is understood that an arrest for an offence of a serious violence nature creates a reachable moment to engage and divert individuals. These initiatives have been piloted in other boroughs so the</p>

Public Health Domain	Current Offer	New proposals to deliver on immediately	Additional new proposals being costed and explored for 2024/25
	<p>taking a public health approach to help break the cycle of violence and harm. Your Choice allows for delivery alongside the more systemic work that local authorities are already doing (i.e., FFT).</p> <p>Urgent Response Co-ordinator The Urgent Response Co-ordinator is based within the LA. The Urgent Response Co-ordinator is responsible for ensuring that all incidents of serious youth violence are managed in a coordinated way across local agencies and partnerships and that young people are reached out to, with an offer of support within the reachable moment, and critical contact points to ensure the support offer is maximised.</p> <p>A&E Navigators embedded within a local hospital Emergency Department There are currently two youth workers embedded within Whipp's Cross hospital emergency department. The service aims to maximise on reachable/teachable moments and</p>		<p>partnership would be interested in understanding outcomes achieved with said pilots and further understand how it could be replicated in the borough including the costings attached to it.</p> <p>Exploration of new interventions aimed at treating trauma. Within this domain there was a dominant theme that emerged from the engagement sessions around the need to continue delivering evidence-based interventions and utilise evidence-based approaches with those individuals who have been exposed in an attempt to control the spread. In addition, there is a need for ongoing exploration of new interventions aimed at treating trauma. Much emphasis was placed on this exploration to be done within specific systems including the Youth Justice System (YJS) and National Probation Service (NPS). Some of the suggestions for new interventions include Cognitive processing Therapy and Eye Movement Desensitisation and Reprocessing (EMDR). The exploration of new</p>

Public Health Domain	Current Offer	New proposals to deliver on immediately	Additional new proposals being costed and explored for 2024/25
	<p>offers support to young people aged 10-25 years who present as victims of serious youth violence at A&E often through acquisition of some type of physical injury which warranted seeking medical help. The A&E navigators will engage on a consent basis and provide ongoing case work support for up to six months.</p>		<p>interventions would require consultation with health partners to understand the feasibility of such interventions, alongside costings attached to it.</p>
<p>Support</p>	<p>Detached Outreach Provision The detached outreach provision is currently delivered by Spark 2 Life. The service supports young people who are at risk of exploitation or coming to notice in “hotspot areas” by taking the service to them and working in their environment and in places they may be gathering or in the street. The service offers support, guidance, advocacy, and signposting.</p> <p>Streetbase Streetbase is a peer-to-peer engagement programme in Waltham Forest. It is made up of the council’s core youth engagement groups, the</p>	<p>Significantly increase the number of safe spaces in the borough. Provide training and support for employees working in safe spaces. Safe Spaces was created to provide the public/residents with options of where to go if they were to experience hate or abuse. The ethos behind Safe Spaces is that these identified spaces within the community would provide residents/public with a physical refuge and practical support. The need to increase the number of safe spaces within the borough emerged from our many engagement sessions whereby the suggestion was to broaden the scope of support and include Safe Spaces where people affected by</p>	<p>Feasibility exercise on the implementation of the “Step Together Programme” in secondary schools in the borough. The Step-Together programme is being identified within this domain as an innovative intervention that the local authority wishes to explore. Step Together is inspired by the Safe Passage programme delivered in Chicago that has been adapted for a pilot of the programme here in the UK more specifically in the West Midlands. Results from this pilot are promising and a more thorough evaluation is being undertaken by the Youth Endowment Fund (YEF). Although not specifically referring to this programme during our</p>

Public Health Domain	Current Offer	New proposals to deliver on immediately	Additional new proposals being costed and explored for 2024/25
	<p>Young Advisors (YA) and Youth Independent Advisory Group (YIAG). Members of the group are aged 16-25 who live in Waltham Forest have been specially trained to deliver peer outreach on the streets in the borough. Streetbase will engage young people in hotspot areas, building relationships with young people, completing anonymous surveys and signposting young people to positive activities, services, and support.</p> <p>Chances Social Impact Bond (SIB) Chances SIB programme utilises sport and physical activity to improve personal, social and community development outcomes using insight, behaviour change principles and partnership working. Chances will be performance managed by the social research and technology company Substance and delivered locally by Leyton Orient Trust. Children and young people aged 8-17, who will be directly referred into the programme from the local authority or another statutory service. Addresses school</p>	<p>serious violence can also access. An invigoration of this scheme, including ascertaining renewed commitment from the spaces currently on the list as well as drive forward recruitment of new spaces are activities which would need to be further undertaken. In addition, it is vital to ensure that employees and/or points of contact within each of these safe spaces feel empowered with the knowledge to support, respond and/or signpost anyone who may access it. This would need to be encapsulated in a tailored training offer to employees working in safe spaces.</p>	<p>engagement exercises many suggestions were give around the importance and need of having trained chaperones in strategic places outside schools or specific routes to and from schools which would help in supporting children to feel safer as well as reduce the likelihood of attacks against children.</p> <p>Development of a bespoke Education Training Employment (ETE) offer for children at risk and who have already been exposed to violence. The Suffolk research report also recommended the creation of Education Training and Employment (ETE) specialist roles that are embedded in youth hubs and other venues that young people are more likely to access. It recognises that currently within Waltham Forest there is a need for a bespoke ETE offer for children at risk and/or have been exposed to Violence. This recommendation is also aligned with the ethos that “<i>service should go to children rather than children going to</i></p>

Public Health Domain	Current Offer	New proposals to deliver on immediately	Additional new proposals being costed and explored for 2024/25
	<p>attendance, offending or at risk of Not in Education Employment or Training (NEET).</p> <p>Community Capacity Building The Capacity Building is being delivered through the LA Anti-Social Behaviour (ASB) team. The programme is to bring together a multi-agency team on a hyper local basis in two locations. Staff will focus on joint problem solving, tackling community safety concerns and additional resident focussed engagement.</p> <p>NEL Health Team Under the Vanguard pilot a health team has been created that includes a Clinical Psychologist, a Speech and Language Therapist and a Consultant Psychiatrist. This health team have mostly focused on case consultations with VCs partners as well as support, training, and capacity building workshops. More recently this team have also developed a pathway whereby case consultation that includes case formulation and speech</p>		<p><i>services”</i> which was a message that was heard throughout our engagement workshops from partners, residents, and young people alike.</p> <p>Bespoke evidence based mentoring programme within schools. During our engagement exercises many suggestions were put forward around the need for bespoke evidence-based mentoring programmes in schools. Currently the evidence on school-based mentoring programme is scarce and the few evaluations available on these arise mostly from the USA. However, learning from some prominent evaluations on some of these programmes can be taken with the caveat of exploring what it could look like within a UK setting. The Youth Endowment Fund (YEF) indicates that mentoring (not specific to school-based programmes) can have a moderate effect towards addressing violence and have made recommendations around what these approaches could/should look like. As such the need would be to explore how these recommendations could be</p>

Public Health Domain	Current Offer	New proposals to deliver on immediately	Additional new proposals being costed and explored for 2024/25
	<p>and language consultation is being made available for Justice services.</p> <p>Turnaround: Turnaround is a Ministry of Justice funded programme until March 2025 aimed at young people between 10-17years who have come to the attention of the Police and/or anti-social behaviour teams within Waltham Forest. Turnaround is focused on preventing young people coming into the Criminal Justice System and going on to offend in the future. Turnaround is voluntary and consent based project.</p> <p>Within LBWF, the Turnaround Project is made up of a Project Co-Ordinator and Project Officer who hold a caseload of young people who are mainly referred from MASH and the Police. An Early Help style assessment is completed with the family once consent is gained. Following on from that, the intervention is completed within a 12-week period focusing on the needs identified in the assessment.</p>		<p>translated into an evidence-based school mentoring programme that could be piloted in the borough.</p>

Public Health Domain	Current Offer	New proposals to deliver on immediately	Additional new proposals being costed and explored for 2024/25
	<p>Youth at Risk (YAR) The purpose of the YAR Team is to focus on improving safety and wellbeing of our children and young people by adopting a ‘contextual safeguarding approach’. There are 4 caseworkers who support children on a voluntary basis who have been identified at being at risk of exploitation. Referrals are received through our Daily Risk Management (DRM) or the Exploitation Risk Panel (ERP).</p> <p>VRU Neighbourhood Coordination – Violence Reduction Coordinators (VRC) There are 3 VRCs in the borough covering the North, Central and South of the borough (Mapped to ASB and Police areas). The VRC’s coordinate the Neighbourhood Violence Reduction offer within their respective area of the borough. Providing high-level, specialist support and intervention as part of the Violence Reduction offer. They work alongside key stakeholders,</p>		

Public Health Domain	Current Offer	New proposals to deliver on immediately	Additional new proposals being costed and explored for 2024/25
	<p>ensuring there is a coordinated offer of support services and interventions in the local area. They also ensure that there is regular correspondence and updates regarding Violence Reduction initiatives to residents and key stakeholders.</p> <p>Some of the activities the VRC undertake include:</p> <ul style="list-style-type: none"> • Summer Planning • Return to schools/college plans • Supporting with Police led operations • Joint work with the ASB team • Link with Designated Safeguarding Leads (local secondary schools and colleges) 		
Strengthen	<p>Prevention Workshops In collaboration with the YAR team and partners our embedded gang's police officer undertakes several prevention workshops for parent/carers and professionals (such as teachers) on a variety of topics including Gangs; Drugs; Digital harms; Sexual health,</p>	<p>Annual VRP events with the partnership to share best practice and learning to support our VCS partners. As a Local Authority we are committed to learn and advance our practice. We also understand how this needs to be done alongside our VCS partners. It was apparent from our engagement</p>	<p>Exploration of the "Tootoot" application within education settings offered to every school in the borough. Tootoot education is an online anti-bullying and safeguarding platform and app that allows pupils to speak about any concerns or issues they have directly to their place of learning. The</p>

Public Health Domain	Current Offer	New proposals to deliver on immediately	Additional new proposals being costed and explored for 2024/25
	<p>healthy relationships; Stop and Search; and a workshop on if a child goes missing.</p> <p>Ask Us for Gangs Ask Us works with local communities, training ambassadors who can inform and challenge negative stereotypes about young people, providing information about issues affecting young people such as County lines, gang involvement, exploitation, and has a directory of support services that young people and the community can access.</p> <p>Development of youth hubs across the borough Earlier in the year the Council opened a number of pilot spaces for young people aged 11 to 25 years old across the borough. These are part of a new youth space project, Space4all, which sits within our Family Hubs programme, bringing local services to residents in their neighbourhood. The LA works in partnership with many</p>	<p>sessions that holding regularly learning events that aren't just ad-hoc events would enable further the strengthening of the partnership as well as work that is being undertaken. These annual learning events being proposed would focus on understanding how well we as a Local Authority are embedding Adolescent Safeguarding practice as well as provide an opportunity to review frameworks for joint working with VCS partners specifically. In addition, it provides an opportunity for the partnership to sharpen their social science knowledge.</p>	<p>app enables students to report any concerns they have in a simple and confidential way, and it also allows students to attach evidence such as screen grabs or photos when anonymously reporting through the app. Staff can respond and manage student concerns effectively using a case-management feature that enables the build up a chronology from start to finish. This is a new initiative the partnership wishes to explore and make it universally available to children and young people to all schools within the LA.</p> <p>Pilot the resilience Training Model (based on the Barnardo's LifeSkills Model). The Barnardo's LifeSkills Programme is an evidence-based programme available within some primary schools and commissioned by the LA. The LifeSkills programme promotes resilience through the development of emotional literacy, critical thinking, problem solving, healthy relationships</p>

Public Health Domain	Current Offer	New proposals to deliver on immediately	Additional new proposals being costed and explored for 2024/25
	<p>VCS organisations to run these youth spaces including Project Zero, LB Creative, Worth Unlimited, Creative Engagement Services, Break Tha Cycle, Waltham Forest Community Hub’s youth team, Streetfathers (Gangs Unite) to name a few. The Violence Reduction Coordinators (VRCs) are working closely with these organisations which include some of our commissioned partners to strengthen that universal offer to young people.</p> <p>Raising awareness of mental health support within the borough This has predominately been undertaken by the VRCs through strategic sharing of information regarding Kooth and the Good Thinking online platforms in youth hubs, with interactions with schools as well as inclusion of relevant materials in targeted piece of work undertaken with schools. Kooth offers a free online counselling, mental health services and wellbeing support to children and young people in Waltham Forest aged</p>		<p>and strategies to prevent risk taking behaviour. We wish to expand on this offer and ensure all primary schools have access to this intervention (there are currently 55 primary schools within the borough). In addition, there is a proposal to pilot a resilience training model (based on the Barnardo’s LifeSkills model). This training would include the delivery of workshops delivered to professionals within the community (police, health visitors, community workers, social workers, YJS practitioners). This fits very well within this domain as one of its outcomes would be to strengthen and increase community resilience.</p>

Public Health Domain	Current Offer	New proposals to deliver on immediately	Additional new proposals being costed and explored for 2024/25
	<p>10 to 25. The Good Thinking is an online mental wellbeing platform that helps Waltham Forest residents look after their mental health and wellbeing in a way that works for them.</p> <p>Community Mentoring Spark 2 Life deliver community mentoring which is a service is funded by the LA. The aim is to build trusted relationships between vulnerable young people and community members with backgrounds which match their ambitions and interests. Mentors from local communities are recruited and trained to work with young people 11-16 who have been referred through schools. In addition, the project works with schools to promote the service as well as identify young people who would benefit from mentoring.</p> <p>Stop and Search Advocacy The Stop and Search Advocacy service is delivered by Spark 2 Life and Streetbase and funded by the MOPAC</p>		

Public Health Domain	Current Offer	New proposals to deliver on immediately	Additional new proposals being costed and explored for 2024/25
	<p>VRU. The project aims to raise young people’s awareness of their rights in relation to stop and search. This is achieved through various means including through presentations at assemblies in schools and through various workshops. The service also delivers training for local police officers and is co-facilitated by Spark 2 Life and YIAG (Youth Independent Advisory Group).</p> <p>Parents and Carers Network The Parent and Carers Network is a consortium of organisations, which work to bring together both community and schools-based support for parents, to provide them with the knowledge and tools to navigate the education system with a focus on school exclusions. The Parent Champion Programme aims to equip and empower parents when it comes to supporting their young people around behaviour management whilst also providing help to those who require social and emotional support regarding parenting.</p>		

Public Health Domain	Current Offer	New proposals to deliver on immediately	Additional new proposals being costed and explored for 2024/25
	<p>Botvin Life skills The Botvin Barnardo's LifeSkills Programme is an evidenced based programme available within primary schools. It is currently available within 16 schools in the borough. It is an early intervention and prevention programme that aims to improve children's emotional health and well-being. The programme promotes resilience through development of critical thinking, problem solving, healthy relationships and has been shown to contributed towards the prevention of risk-taking behaviour.</p>		

Violence Against Women and Girls (VAWG)

The definition of the Serious Violence Duty specifies domestic abuse and sexual offences. In London, we recognise that these are clear forms of violence against women and girls (VAWG). The Mayor of London is strongly in favour of consideration of the wider context of VAWG, specifically the associated behaviours and offences that contribute to violence such as crimes committed in the name of 'honour', forced marriage, harmful practices (e.g. female genital mutilation), prostitution and sexual harassment.

Waltham Forest has a robust VAWG strategy in place (See appendix ii) and a periodic annual refresh has been undertaken following our SNA and our VAWG action plan has been updated to include a number of new actions listed below:

- To ensure strong referral pathways from statutory services into local and pan-London specialist support services, including 'by and for' provision for all victims of domestic abuse and sexual offences.
- To ensure all victims and perpetrators can access the support they need- including information on how they can access this support and where they can find more information. This might include the consideration of cross-borough reciprocal agreements.
- Co-ordinate an appropriate local awareness training offer for key professionals coming in to contact with survivors and/or perpetrators- such as health, education, social care and justice- which is refreshed annually.
- Local Authority departments such as children's social care, housing, adults social care and community safety, to ensure policies are in place regarding working with perpetrators of domestic abuse and sexual offences when safeguarding children and the non-abusive parent.
- Community Capacity Building through awareness raising and training, including the development of VAWG Community Champions and a VAWG Advisory Panel.
- Facilitating of a VAWG Providers and Partners network which feeds into Strategic Meetings.

Waltham Forest's VVRAP has been updated to reflect the actions from both the refreshed VRP and VAWG strategic group.

Identified current funding streams that can be used by the partnership for prevention and reduction activities:

Area	Funding	Amount	
Violent Crime	Local Authority	£667,882	Projects/Commissions & Staff
	MOPAC	£480,535	
	NHS	£397,000	
	Total:	£1,545,417	
Domestic Violence	Local Authority	£676,131	
	MOPAC	£192,939	
		£869,070	
	TOTAL	£2,414,487	

Publishing of the Strategy

The Strategy document will be published on the council’s website by 31st January 2024.

Date for review/annual review mechanism

This Strategy document will be reviewed annually, with the next review due by 30th January 2025.

Progress of this strategy, the objectives set out within it and the local action plan, will be reviewed at least quarterly through the VRP, VAWG Strategic Group and Safety Net.