



# DRAFT INFRASTRUCTURE DELIVERY PLAN

EXEC SUMMARY - AUTUMN 2020



AUTUMN 2020

## INTERPRETING AND TRANSLATION ASSISTANCE

This document or its summary can be made available in other languages, large print, Braille, audio-tape format or a translation service provided on request. Should you require access to these services please contact us at the address stated below.

This document can also be made available on Audio Tape  Braille  Large Print

<p>Dokumenti apo përmbledhja e tij mund të sigurohen në gjuhë tjera, shtyp të madh, Braille, audiokasetë apo i përkthyer sipas kërkesës. Nëse ju keni nevojë për këto shërbime, ju lusim na kontaktoni në adresën e dhënë më poshtë.</p> <p style="text-align: right;">Albanian <input type="checkbox"/></p>	<p>આ અહેવાલ કે એનું સંક્ષેપ બીજી ભાષાઓમાં, મોટા અક્ષરોમાં, બ્રેઈલમાં, ઓડિયો ટેપ પર અથવા ભાષાંતર સેવા દ્વારા ઉપલબ્ધ થઈ શકે છે. જો તમને આ સેવાની જરૂર છે, તો કૃપા કરીને અમને નીચેના સરનામે સંપર્ક કરો.</p> <p style="text-align: right;">Gujarati <input type="checkbox"/></p>
<p>يمكن توفير هذه الوثيقة أو ملخصها بلغات أخرى أو بالطبعة لكبيرة أو بلغة بروف أو على شريط ويمكن توفير خدمة ترجمة عند الطلب. وإذا احتجت مثلا من هذه الخدمات الرجاء الاتصال معنا على العنوان المذكور أدناه.</p> <p style="text-align: right;">Arabic <input type="checkbox"/></p>	<p>यह पर्चा या इसका संक्षेप अन्य भाषाओं में, बड़े अक्षरों में या सुनने वाली टेप पर माँग कर लिया जा सकता है, और अन्य भाषाओं में अनुवाद की सुविधा भी मिल सकती है। यदि आपको इन सुविधाओं की जरूरत है तो कृपया निम्नलिखित पते पर हमारे साथ संपर्क करें।</p> <p style="text-align: right;">Hindi <input type="checkbox"/></p>
<p>অনুবাদক্রমে এই ডকুমেন্ট অথবা এর সারসর্ম অন্যান্য ভাষায়, বড় ছাপার অক্ষরে, ব্রেইল বা অডিওকাসেট, অডিও টেইপ বা বাজিয়ে শোনার কেসেটে অথবা অনুবাদ করে সেবার ব্যবস্থা করা যাবে। আপনার যদি এসব সেবাসমূহের প্রয়োজন হয়, তাহলে অনুগ্রহ করে আমাদের সাথে নিচের ঠিকানায় যোগাযোগ করুন।</p> <p style="text-align: right;">Bengali <input type="checkbox"/></p>	<p>ਇਹ ਪਰਚਾ ਜਾਂ ਇਹਦਾ ਸੁਲਠਾਸਾ ਹੋਰ ਭਾਸ਼ਾਵਾਂ ਵਿਚ, ਵੱਡੇ ਅੱਖਰਾਂ ਵਿਚ, ਜਾਂ ਸੁਣਨ ਵਾਲੀ ਟੇਪ 'ਤੇ ਮੰਗ ਕੇ ਲਿਆ ਜਾ ਸਕਦਾ ਹੈ, ਅਤੇ ਹੋਰ ਭਾਸ਼ਾਵਾਂ ਵਿਚ ਤਰਜਮਾ ਕਰਨ ਦੀ ਸਹੂਲਤ ਵੀ ਮਿਲ ਸਕਦੀ ਹੈ। ਜੇ ਇਹਨਾਂ ਸਹੂਲਤਾਂ ਦੀ ਜ਼ਰੂਰਤ ਹੈ, ਤਾਂ ਕਿਰਪਾ ਕਰਕੇ ਹੇਠ ਲਿਖੇ ਪਤੇ 'ਤੇ ਸਾਡੇ ਠਾਲ ਸੰਪਰਕ ਕਰੋ।</p> <p style="text-align: right;">Punjabi <input type="checkbox"/></p>
<p>我們可以按照您的要求向您提供此文件或其摘要的母語譯本、大字印刷版本、盲文版本、錄音帶或者提供其他翻譯服務。如果您需要以上服務，請通過以下的地址與我們取得聯繫。</p> <p style="text-align: right;">Chinese <input type="checkbox"/></p>	<p>İstekte bulunursanız, bu broşürü ya da broşürün özetinin Türkçesini size gönderebiliriz. Ayrıca broşürün iri harfli baskısı, görme engelliler için parmak ucuyla okunabilen Braille alfabesiyle yazılmış kabartma şekli ve ses kaseti de olup istek üzerine broşürün özetini sözlü olarak da size Türkçe okuyabiliriz. Bu hizmetlerden yararlanmak için aşağıda yazılı adresten bize ulaşabilirsiniz.</p> <p style="text-align: right;">Turkish <input type="checkbox"/></p>
<p>Ce document ainsi que son résumé sont disponibles dans d'autres langues, en gros caractères, en braille et sur support audio. Une version traduite peut également être obtenue sur demande. Pour obtenir l'un de ces services, veuillez nous contacter à l'adresse ci-dessous.</p> <p style="text-align: right;">French <input type="checkbox"/></p>	<p>یہ دستاویز یا اس کا خلاصہ دیگر زبانوں، بڑے حروف، یا آڈیو ٹیپ کی شکل میں دستیاب ہو سکتا ہے، یا درخواست کرنے پر ترجمے کی سروس دستیاب ہو سکتی ہے۔ اگر آپ ان سروسز تک رسائی حاصل کرنا چاہتے ہیں تو براہ کرم نیچے دیئے گئے پتے پر رابطہ کیجئے۔</p> <p style="text-align: right;">Urdu <input type="checkbox"/></p>
<p>Name _____ Address _____ _____ _____ Telephone No _____</p>	<p>CONTACT:  Planning Policy London Borough of Waltham Forest Magistrates court, Waltham Forest Town Hall Forest Road, Walthamstow, London, E17 4JF  Telephone 020 8496 3000 Email: <a href="mailto:planning.policy@walthamforest.gov.uk">planning.policy@walthamforest.gov.uk</a> Web site: <a href="http://www.walthamforest.gov.uk">www.walthamforest.gov.uk</a></p>

## Contents

<b>1 Introduction</b> .....	4
<b>2 Physical Infrastructure</b> .....	8
<b>Transport</b> .....	8
<b>Digital Communications</b> .....	9
<b>Energy</b> .....	9
<b>Water Supply &amp; Sewage</b> .....	10
<b>Sustainable Waste Collection &amp; Management</b> .....	10
<b>Emergency Services (inc. Fire, Ambulance, Police &amp; Borough CCTV)</b> .....	10
<b>3 Social &amp; Community Infrastructure</b> .....	11
<b>Health</b> .....	11
<b>Education &amp; Childcare/Early Years Facilities</b> .....	11
<b>Culture</b> .....	12
<b>Built &amp; Natural Heritage</b> .....	12
<b>Sport &amp; Leisure</b> .....	13
<b>Outdoor Play</b> .....	14
<b>Libraries</b> .....	14
<b>Gypsy &amp; Traveller Provision</b> .....	14
<b>Burial Space Capacity</b> .....	14
<b>4 Green &amp; Blue Infrastructure</b> .....	15
<b>Open Space</b> .....	15
<b>Allotments</b> .....	15
<b>Trees &amp; Biodiversity</b> .....	15
<b>Air Quality</b> .....	16
<b>Blue Infrastructure &amp; Strategic Flood Risk</b> .....	16
<b>Green &amp; Blue Strategic Projects to 2035</b> .....	16
<b>The Epping Forest</b> .....	17

# 1 Introduction

## What is the Infrastructure Delivery Plan?

The Waltham Forest Infrastructure Delivery Plan (IDP) is an essential document supporting the Borough's New [Local Plan](#)<sup>1</sup> to ensure that development happens in the right places at the right time, in a coordinated way.

It uses a wide variety of data to set out:

- What infrastructure is required for the future?
- When will it be required?
- How much is it likely to cost?
- How will it be funded and who is responsible for providing it?
- Are there any identified funding gaps? If so, how are they likely to be overcome?

'Infrastructure' is the systems and services that the borough needs to support its residents and economy and ensure a good quality of life. This includes physical infrastructure such as transport, waste and energy supply, but also social facilities such as schools, healthcare and culture, and green & blue infrastructure such as sport pitches, playgrounds and our forest, river and reservoirs.

The full document can be viewed here:

- [Part 1: Introduction and anticipated growth to 2035](#)
- [Part 2: Physical Infrastructure](#)
- [Part 3: Social and Community Infrastructure](#)
- [Part 4: Green and Blue Infrastructure](#)
- [Part 5: Funding, Governance and Delivery + appendices](#)
- [Infrastructure Delivery Schedule](#)

## How will it keep up with ongoing change in the Borough?

The Borough's population and its needs are constantly changing and it is impossible to predict the future with certainty. For example, we do not yet know what the full impact of Covid-19 will be. The Infrastructure Delivery Plan is therefore a live document that will be revised annually as we receive new information, or when new technologies and solutions become available. Each year we will also publish an Infrastructure Funding Statement (IFS) that will set out the previous 12 months' income and expenditure relating to the Community Infrastructure Levy (CIL) and Section 106 (S106) agreements, and planned expenditure for the 12 months ahead.

## Where does the IDP's data come from?

An extensive range of sources including fine-grained data from stakeholders and providers such as TfL, NHS, the Clinical Commissioning Group (CCG), and the Council's inhouse teams. We have also carried out a number of [evidence base studies](#)<sup>2</sup>.

Data ranges from the macro, such as population projections and commuting patterns, to the micro, such as the waiting times for a bus.

## How does Waltham Forest's plan fit with the London Infrastructure Plan?

The [London Infrastructure Plan 2050](#)<sup>3</sup> acknowledges that the capital's infrastructure is already under pressure, and its population continues to grow.

---

<sup>1</sup> <https://www.walthamforest.gov.uk/content/local-plan>

<sup>2</sup> <https://www.walthamforest.gov.uk/node/1550>

<sup>3</sup> <https://www.london.gov.uk/what-we-do/business-and-economy/better-infrastructure/london-infrastructure-plan-2050>



## What infrastructure is planned over the next 15 years, and where?

The [Infrastructure Delivery Schedule](#) identifies the key projects required to support the Borough's sustainable growth and development to 2035. This can be found in Appendix 1 of the Infrastructure Delivery Plan. The following map highlights some of the key infrastructure projects underway, planned and under consideration over the lifetime of the Local Plan.

<b>Key to map</b>
<b>Transport</b>
P-1 Walthamstow Central improvements
P-2 Leyton Underground Station improvements
P-3 Ruckholt Road Station
P-6 Lea Bridge Station improvements
P-8 Hall Farm Curve
P-9 Coppermill Village Liveable Neighbourhood
P-10 South Leyton/Leytonstone Liveable Neighbourhoods
P-12 Higham Hill and Lloyd Park Liveable Neighbourhood
P-14 Primary Cycle Network, Forest Road
P-15 Primary Cycle Network, Hoe Street
P-16 Primary Cycle Network, Woodford New Road/Snaresbrook Road junction
P-17 Primary Cycle Network, Forest Road to Chingford Mount
P-18 Primary Cycle Network, Lea Bridge Road to Leyton
P-A Improved connections to Crossrail stations
P-B Addressing connectivity gaps
<b>Sustainable waste collection</b>
P-30 Low Hall Depot
<b>Health</b>
P-34 Whipps Cross University Hospital redevelopment
P-35 Sutherland Road Surgery
P-36 St James Surgery
P-37 The Score/Coronation Square
P-38 Silverthorne Health Centre
P-39 Lea Bridge – New Health Centre

P-40 Leyton Green Health Centre
P-41 Nasberry Health Centre
P-42 Langthorne Health Centre
P-43 Oak Health Centre
P-44 Chingford Health Centre
<b>Education</b>
P-47 Leytonstone School expansion
P-48 Norlington Boys School expansion
P-49 Kelmscott School expansion
<b>Culture</b>
P-54 EMD Cinema (Walthamstow Granada)
P-55 Town Hall Campus (Fellowship Square)
P-56 The Regal Cinema
P-C The old Standard music venue
<b>Sport &amp; leisure</b>
P-66 The Score
<b>Green &amp; blue infrastructure</b>
P-137 Walthamstow Wetlands
P-139 Connecting Leyton's sport hubs
P-141 Protecting and enhancing Woodford New Road green corridor
P-142 River Ching and South Chingford wetlands: flood alleviation, water quality and biodiversity
P-143 River Ching Local Blue Ribbon: Gateways and interpretation
P-144 Low Hall: access, interpretation & biodiversity improvements
P-145 Sewardstone Gateway to the Countryside
P-146 North Chingford Gateway to the Forest
P-147 Whipps Cross
P-148 A12 urban greening
Numbers cross reference to the <a href="#">Infrastructure Delivery Schedule</a>



Key projects:

Physical Infrastructure

- Transport
- Sustainable Waste Collection & Management

Social & Community Infrastructure

- Health
- Education
- Culture
- Sport & Leisure

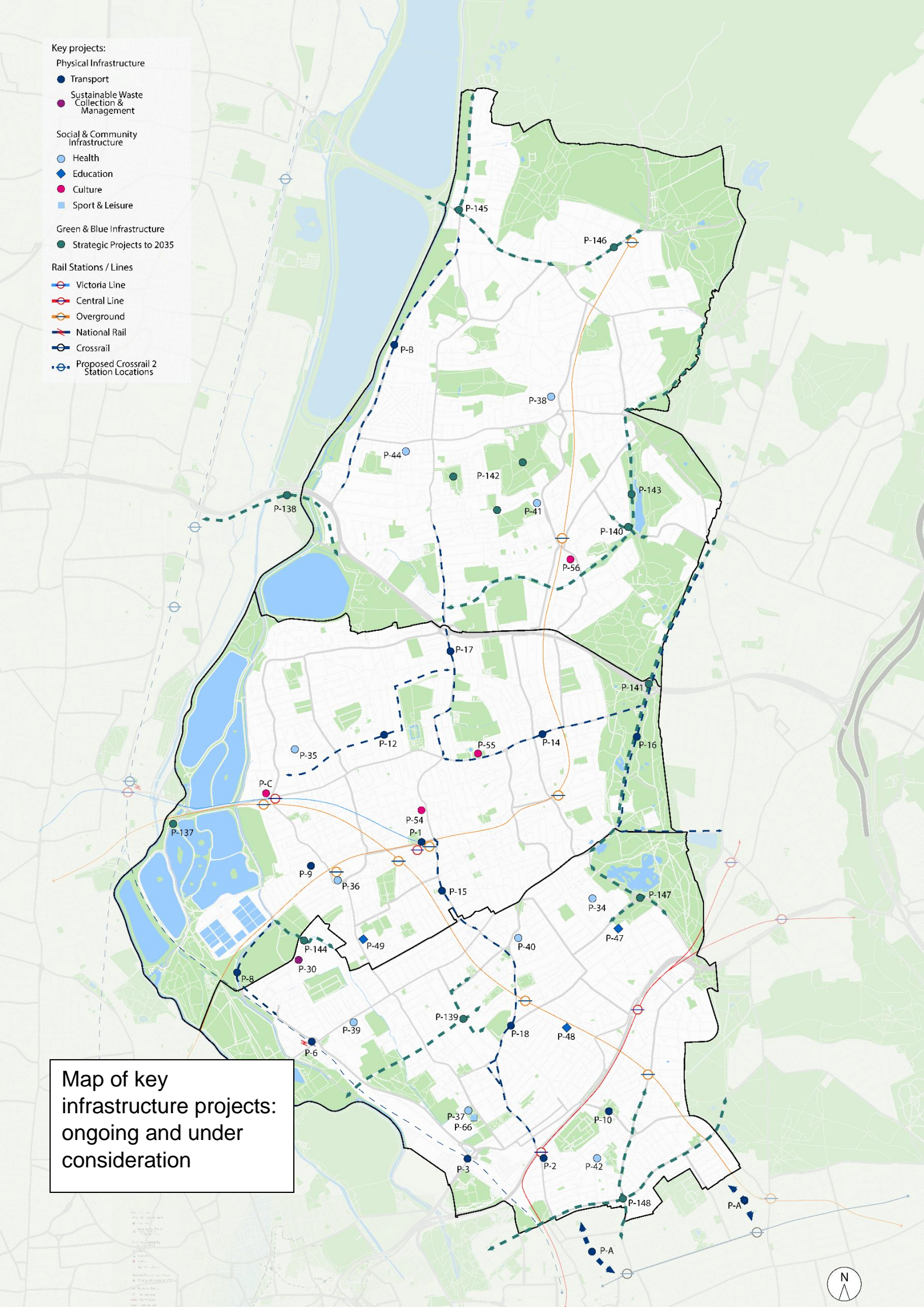
Green & Blue Infrastructure

- Strategic Projects to 2035

Rail Stations / Lines

- Victoria Line
- Central Line
- Overground
- National Rail
- Crossrail
- Proposed Crossrail 2 Station Locations

Map of key infrastructure projects: ongoing and under consideration





## Where will the funding come from?

The Council draws on several sources of funding to pay for the infrastructure the Borough needs, with contributions for a single project coming from multiple sources. This partnership approach to delivery has been key to the successful regeneration of areas across London and the UK. The main sources are:

- *Community Infrastructure Levy (CIL)* – Contributions from developers based on new building projects. Because CIL is directly related to the quantum of development that is built, it is hard to predict exactly, but it is expected that CIL could generate up to £111m over the Local Plan period.
- *Neighbourhood CIL (NCIL)* – 15% of CIL receipts (or 25% where there is a neighbourhood plan in place, as at Highams Park) must be spent on addressing additional demands placed on an area by the new development. This is not limited to infrastructure.
- *Section 106 (S106)* – Financial and non-financial obligations can be secured through new developments to mitigate potential impact of the development and help deliver things that a neighbourhood needs such as affordable housing or improved green spaces. As with CIL, it is reliant on new development coming forward and is therefore difficult to predict.
- *Council Tax* – This funds approximately 50% of the Borough's services, excluding schools. New homes in the borough will increase the amount of Council Tax collected.
- *Business rates* – paid on commercial property.
- *New Homes Bonus (NHB)* – A grant paid to councils as an incentive for

housing growth. Local authorities need to achieve tax base growth (the amount of economic activity subject to tax) of more than 0.4% before they receive this.

- *Private sector funding* – The private sector will have a fundamental role to play in the delivery of the infrastructure that Waltham Forest needs. This will take place through development management, regeneration, housing delivery, property and asset management, highways, education and waste functions.
- *Utility service investment plans* – The Council works closely with infrastructure providers to ensure they incorporate the Borough's growth into their long-term plans. This ensures that the 'hard' infrastructure such as sewers or a sub-station are taken care of by providers, leaving the Council to use infrastructure contributions such as CIL for social and community improvements.
- *National grants* – for example Heritage Lottery Fund and Sport England. Financial and professional support provided by these bodies can be instrumental in developing shared visions and objectives, allowing us to pursue more ambitious schemes.

Additional sources are set out in the full Infrastructure Delivery Plan.

## How much will it cost?

By assessing all of the requirements of the Waltham Forest New Local Plan 2020-35, the IDP calculates a funding gap of circa £550m, which will be raised through the above sources. Further detail can be found in the main Infrastructure Delivery Plan document.

## 2 Physical Infrastructure

### Transport



The Borough's proximity to Central London, the City and the Queen Elizabeth Olympic Park puts significant strain on the carrying capacity of road and public transport infrastructure. The network is severely stretched resulting in congestion, air pollution, collisions and delays.

To overcome some of these issues, the Local Plan and IDP encourage:

- active and sustainable travel over other modes, including commitment to the '15-minute neighbourhood'
- placemaking and step-free access at all stations
- a smarter, greener bus network
- liveable and low traffic neighbourhoods (LTNs)

Connectivity issues will be addressed for Strategic Growth areas such as Sewardstone Road and North Circular Road, with improved public and active transport to the Upper Lea Valley / Meridian Water.

Recent infrastructure schemes have included a new rail station at Lea Bridge, ongoing investment in the Enjoy Waltham Forest cycle and walking network (2014) and the installation of more than 100 electric vehicle charging points.

#### Key projects: ongoing and under consideration

- Redeveloping Leyton underground station (£18m, 2022-25)
- Improved Walthamstow Central Transport interchange (£41.5m, 2025-30)
- A new station at Ruckholt Road (£60-80m, delivery 2030-41)
- Step-free access at all stations (£tbc; 2020-41)
- Lea Bridge Station improvements (£6m, 2021)
- Full borough coverage for Electric Vehicle Charging points (EVC) by 2022
- Improved connections to stations on the Crossrail 1 line
- Extensions to the Enjoy Waltham Forest cycle network (£tbc; 2020-35)
- Addressing connectivity gaps, particularly the strategic growth areas of Sewardstone Road and North Circular Road
- Full green bus network (£tbc; 2018-41)
- Hall Farm Curve to enable a direct rail connection between Chingford and Stratford (£40m; 2030-41)
- Liveable neighbourhoods



## Digital Communications

In general, the Borough has good digital connectivity.

External grant funding is in place to begin upgrading and extending the Council's own CCTV ducting network to help provide capacity for operators. This will generate income for the Council in return.

The Waltham Forest Digital Strategy, 2018<sup>4</sup> seeks to enable delivery of fibre gigabit broadband at affordable prices to every resident and business in the Borough.

### Key projects: ongoing and under consideration

- Openreach will roll out its Fibre First investment programme to North Waltham Forest by late 2020s
- Targeted improvements to areas with poor broadband, eg the south west of the borough
- Increased ducting network (ongoing)
- Continuing to attract investment in the Borough from leading telecoms companies

## Energy

Waltham Forest Council declared Climate Emergency in April 2019 and is working with partners to support measures to reduce carbon emissions. New and refurbished housing developments are moving away from gas towards use of air source heat pumps, photovoltaics and other energy-saving technologies.

Network operator UKPN has recently completed a £13.7m upgrade of power lines from Hackney to Walthamstow Tee Point – this is a principal source of much of the Borough's power requirements, particularly the south and west of the borough and will help pave the way for the Borough's longer-term growth and regeneration.

UKPN is identifying opportunities to redevelop the interchange at Walthamstow Tee point at the junction of Blackhorse Lane and Exeter Road – this will help unlock supply to growth areas in the South of the Borough.

### Key projects: ongoing and under consideration

- Increase in electric vehicle charging infrastructure by UKPN
- Redevelopment of the Town Hall Campus / Fellowship Square uses photovoltaic panels

## Water Supply & Sewage

Waltham Forest, along with the rest of London, is classed as 'water stressed', meaning it is at risk of drought. This is addressed in the [London Plan 2021](#)<sup>5</sup>.

The Borough's water supplier, Thames Water, is currently consulting on a revised draft Water Resources Management Plan<sup>6</sup>, which will look ahead up to 2100. This shows a deficit in London's water supply from 2024/2025, and suggests a preferred programme to deal with this.

Thames Water is building a new 'super sewer', the Thames Tideway Tunnel. When completed in 2023 it will prevent sewage overflow during heavy rain, protecting rivers such as the Lea.



## Sustainable Waste Collection & Management

Waltham Forest is one of seven boroughs that make up the North London Waste Authority. A draft [Waste Development Plan for North London](#) was put out to consultation at the end of 2020 and is undergoing modifications before being recommended to an independent inspector for adoption.

### Key projects: ongoing and under consideration

- Upgrading and modernisation of the Borough's main waste collection and management facility as a green depot at Low Hall Depot (£20m; 2024)
- Investment in the Council's waste collection fleet
- Introduction of food waste collection

## Emergency Services (inc. Fire, Ambulance, Police & Borough CCTV)

There are currently four fire stations in the Borough: Chingford, Walthamstow, Leyton and Leytonstone. None are identified for redevelopment or replacement.

The London Ambulance Service has two stations in Waltham Forest: Walthamstow and Whipps Cross. There is another just outside the borough at Edmonton.

### Key projects: ongoing and under consideration

- The MET Police have identified the need for seven District Ward Offices (hubs for officer use at the beginning and end of their shifts) across the Borough.
- The Council continues to support a Design Out Crime approach to new developments

<sup>5</sup>

[https://www.london.gov.uk/sites/default/files/the\\_london\\_plan\\_2021.pdf](https://www.london.gov.uk/sites/default/files/the_london_plan_2021.pdf)

<sup>6</sup> <https://wholesale.thameswater.co.uk/-/media/Site-Content/CorporateResponsibility/PDFs/WRMP14.pdf>

### 3 Social & Community Infrastructure

#### Health

The Borough's highest healthcare priority is the redevelopment of Whipps Cross hospital to provide a state-of-the-art 21st Century facility.

The NHS and Clinical Commissioning Group (CCG) want to see consolidation of practices into healthcare hubs serving lists of at least 10,000 residents. This would mean the consolidation of the Borough's high percentage of smaller, privately owned businesses based in converted Victorian and Edwardian buildings. At present, 18% of space in local healthcare centres (excluding GPs) is underused.

#### Key projects: ongoing and under consideration

- Masterplanning, design and community engagement work is underway for redevelopment of Whipps Cross Hospital (expected completion 2026)
- Redevelopment of the St James's Health Centre, Walthamstow, shared with Barts Health (£6.7m; 2023)
- Relocation and expansion of Sutherland Road Surgery (£1.324m; 2021)
- A new health centre, gym and community space within the Score development, Leyton (£9.4m;2026)

#### Education & Childcare/Early Years Facilities

Although the Council, as Local Planning Authority and Local Education Authority, must ensure sufficient school places, it no longer has the power to build new maintained schools; these must be provided through private partnerships.



Since 2017, Waltham Forest (along with many other London boroughs) has been experiencing a decline in demand for reception places, driven by a drop in births in 2013 and compounded by factors such as Brexit and housing benefit caps. As a result, a number of primary schools have temporarily reduced their admissions to cut costs; when the need rises again, these schools will be able to return to operating at their maximum capacity.

In the secondary sector, although there is evidence some families have left or are leaving Waltham Forest, demand for Year 7 places continues to grow. Five existing schools are earmarked for expansion over the next four years: Leytonstone School, Norlington Boys, Kelmscott School are underway, with two more sites to be confirmed.

A number of Early Years schemes are planned or in negotiation through the planning application process. Where there are large new developments for increased residential populations, on-site nursery provision is preferable, but where this is not possible, financial contributions will be sought to provide facilities elsewhere in the area.

#### Key projects: ongoing and under consideration

- Five secondary school expansions



## Culture



Following Waltham Forest's year as London's first Borough of Culture in 2019, culture remains at the heart of planning and growth. The Draft Local Plan makes this cultural legacy one of its strategic objectives, using the creative economy to help bring money into the borough and improve wellbeing and life chances for all.

This manifests itself in several different ways: delivering affordable workspaces for creative professionals through the Local Plan; community resources such as upgraded library facilities and museums (William Morris Gallery, Wetlands Centre, new Wood Street library); major capital investments such as the EMD arts centre and Fellowship Square, which will feature a new civic square for outdoor events.

A second phase of the Making Places programme in 2020 worked with local communities on small-scale interventions such as Abbots Park play area, Lea Bridge Library Garden and Hatch Lane underpass.

The Infrastructure Delivery Plan has also assessed the Borough's current cultural assets, benchmarking it against other outer London boroughs and Islington. It recommends addressing the gaps in cultural amenities across the Borough and using space flexibly to support culture and creative enterprise for the community.

### Key Projects: ongoing and under consideration

- Restoration of Walthamstow's EMD Cinema (Walthamstow Granada) as a 1,000-seat arts and performance centre (£25m; 2021)
- Restoration of Highams Park's Regal Cinema as part of a mixed-use residential development (£tbc; 2025)
- New 500-capacity music venue on the site of the former Standard pub, Blackhorse Lane (2023)
- Fellowship Square, the public plaza in front of the Town Hall, featuring fountains and civic space for events, entertainment and play (Phase 1 £1.45m 2021; Phase 2 £6.7m 2023)

### Built & Natural Heritage

The Draft Local Plan recognises the importance of the Borough's built and natural heritage

Pressure on the Borough's Historic landscapes and heritage features is expected to increase as the population of the Borough grows. These assets will therefore need careful monitoring and management.

Recent heritage projects funded by the National Lottery include: Lloyd Park, Walthamstow; St James Street townscape; and Walthamstow Wetlands.

## Sport & Leisure



The Council recognises the role sport and leisure can play in the regeneration of neighbourhoods and its contribution to quality of life and wellbeing. The Council works with a range of partners on its sport provision, including local clubs and national bodies such as Sport England, the Football Association (FA), Essex Cricket Board, and the English Hockey Board. A number of areas of opportunity for partnership are under discussion including beach volleyball, indoor tennis, and a purpose-built gymnastics facility.

As an Olympic borough, Waltham Forest is home to a number of major sport and recreational facilities. Since 2012 there has been more than £50m investment in the Borough, including Walthamstow's Feel Good Centre and swimming pool, Cheney Row BMX Park, and Leyton Urban Cricket Hub.

The Borough's current [Physical Activity and Sport Strategy](#)<sup>7</sup> sets out plans from 2017-2021 and aims to increase opportunities for all ages and abilities to take part in physical activity, and develop sport a grass roots level. LBWF [Playing Pitches Strategy](#)<sup>8</sup> (2020) also provides detailed analysis covering Rugby, Hockey, Football and Cricket.

7

<https://www.walthamforest.gov.uk/sites/default/files/Strategy.pdf>



Other upgrade work will take place on neighbourhood sports grounds, pools and leisure centres across the borough.

### Key Projects: ongoing and under consideration

- The Score sport complex and health hub will have full-sized courts for basketball, futsal, netball, badminton, handball, volleyball and more (2024)



8

[https://www.walthamforest.gov.uk/sites/default/files/Waltham%20Forest%20Playing%20Pitch%20Strategy%20Full%20Analysis\\_v4.0%2011.08%20%281%29%20%281%29%20%281%29.pdf](https://www.walthamforest.gov.uk/sites/default/files/Waltham%20Forest%20Playing%20Pitch%20Strategy%20Full%20Analysis_v4.0%2011.08%20%281%29%20%281%29%20%281%29.pdf)

## Outdoor Play

In 2020, £440,000 of Neighbourhood CIL was allocated to the Council's Play Improvement Programme for delivery during 2020-22. This will benefit parks, play areas, pitches and outdoor courts across the Borough.

Future provision will be guided by the Mayor's supplementary planning guidance (SPD) on [Play and Informal Recreation](#)<sup>9</sup>, which recommends 10sqm of open space per child in new developments.

## Libraries

Following significant capital investment, the Borough currently has eight libraries, the latest being the new Wood Street Library, which opened in August 2020. The focus now is on helping secure contributions towards investment in digital technologies.

## Gypsy & Traveller Provision

The New London Plan includes a new policy requiring all boroughs to assess provision of gypsy and traveller accommodation. As a result, Waltham Forest has identified a need for additional plots and is confident that these can be accommodated at existing sites. We will continue to engage in discussions at a strategic level to ensure that need is met.

## Burial Space Capacity

Evidence supporting the London Plan shows a shortage of burial space in London; Waltham Forest currently lacks enough burial space to meet predicted demand for the next 20 years.

A £400,000 maintenance and improvement plan is in place at the Borough's main cemetery, Chingford Mount. To make space for new graves, 56 trees were removed in 2019 and a new memorial garden is being designed.

The Council is also exploring opportunities to provide crematoria in the Borough.

---

<sup>9</sup> <https://www.london.gov.uk/what-we-do/planning/implementing-london-plan/planning-guidance/play-and-informalrecreation>



## 4 Green & Blue Infrastructure



### Open Space

There is 1,202.2 ha of open space of differing types within the Borough. Most of this is the natural and semi-natural urban greenspace of two regional parks: Lee Valley and the Epping Forest. Parks and gardens account for 9% and allotments, community gardens and city farms make up another 5%. In total, 27% of the Borough is designated either Metropolitan Open Land (MOL) or Green Belt.

The Borough's [Open Space Needs Assessment](#)<sup>10</sup> recommends 1.6ha of open space per 1,000 people. As this is not always possible, the Local Plan will use new development to improve access to existing open spaces and to enhance the local streets and public realm.

The IDP and Local Plan also seek to establish green corridors that provide more walking and cycling routes.

### Allotments

In Waltham Forest, the majority of residents are within 1km of an allotment. Parts of Hoe Street Forest Road and Wood Street are the exception.

### Trees & Biodiversity

The Borough has an abundance of Sites of Importance for Nature Conservation (SINCs) covering around 900ha, and Sites of Special Scientific Interest (SSSI), including the ancient woodland of the Epping Forest, Larks Wood and Ainslie Wood, as well as the reservoirs of the Lee Valley. There are also 44km of rivers and streams.

Waltham Forest's biodiversity principles are set out in the IDP, aimed at protecting existing habitats from the impacts of urbanisation, and creating of new ones.

By undertaking further study and research, the Council will deliver a borough-wide strategy to find Suitable Alternative Natural Green Space (SANGS) to mitigate recreational pressures from an increased population on the Epping Forest Special Area of Conservation (EFSAC) and the Lee Valley Special Protection Area (SPA) and Ramsar. This will consist primarily of improvement to other existing green spaces for use for recreational activity.

As of April 2017, there were 48,000 trees under the responsibility of the Council, primarily street trees. The Borough strategy is to continue with its programme

<sup>10</sup>[https://www.walthamforest.gov.uk/sites/default/files/WF%20Open%20Space%20Needs%20Assessment%202019%20Update\\_WEB.pdf](https://www.walthamforest.gov.uk/sites/default/files/WF%20Open%20Space%20Needs%20Assessment%202019%20Update_WEB.pdf)

of tree planting in order to maintain tree canopy cover, improve air quality and maximise biodiversity.

The IDP also considers private gardens and green walls/roofs to play an important role in supporting biodiversity.

## Air Quality

Waltham Forest is designated an Air Quality Management Area (AQMA) as it exceeds EU and WHO pollution levels.

The main pollutant is road traffic, and as a result the south of the Borough, which is more developed, has poorer air quality than the north.

The Council's [Air Quality Action Plan 2018-2023](#) is being implemented with the help of financial contributions from developers via Section 106. Key measures include improving local environments, encouraging low emission vehicles, and promoting active modes of travel such as walking and cycling. Amongst initiatives already underway are green screens erected at eight schools in the Borough; school streets that restrict entry around the start and end of the school day; installation of 'City Trees' (freestanding outdoor air-cleaning systems, see photo).

As part of Waltham Forest's declared Climate Emergency, the Council has committed to launching London's first Climate Emergency Commission of experts charged with making recommendations of how to tackle this global issue at a local level.



## Blue Infrastructure & Strategic Flood Risk

Blue infrastructure refers to the Borough's waterways, which are home to a variety of species and as well as being a source of flood risk.

The River Lee is the Borough's primary source of blue infrastructure, with Dagenham Brook and the River Ching flowing into it. Flood relief is provided by the River Lee Flood Relief Channel to the east of the River Lee, managed by the Environment Agency.

Walthamstow's reservoirs provide drinking water for 3.5 million people and in October 2017 they were opened up for public recreation as the Walthamstow Wetlands.

Although the majority of Waltham Forest is located in Flood Zone 1 (low risk), a review of the Borough was carried out to identify areas at risk of flooding from surface water. As a result, three critical drainage schemes are nearing completion (South Chingford, Chestnut Field and the Fillebrook) and external grant funding has been secured to deliver four more. When complete, almost the entire Borough will be covered by a detailed model that will help identify appropriate actions.

Waltham Forest's Blue Infrastructure Principles also plan to de-culvert and re-wild the Borough's rivers, which will be protected as key routes for wildlife and recreation.

## Green & Blue Strategic Projects to 2035

The Waltham Forest Green & Blue Infrastructure Study (2020) identifies 11 strategic investment areas, with an aspirational investment of more than £24 million over the lifetime of the Local Plan to 2035.

This would include funding from a range of sources, including developer contributions and external grants.

### **Key projects: proposed and ongoing**

- Ongoing maintenance of Walthamstow wetlands funded by developer contributions from neighbouring new homes. (£5.54m; until 2040)
- Meridian Water Link walking and cycle route as an alternative to the north circular (£2m; 2020-2035)
- Walking and cycle routes between Leyton's sports hubs (£2.5m; 2020-35)
- Highams Park heritage, open space and biodiversity improvements (£750,000; 2020-2035)
- Protecting and enhancing Woodford New Road green corridor with segregated cycle lanes linking with the existing Enjoy Waltham Forest routes (£8m; 2020-2035)
- River Ching and South Chingford Wetlands flood alleviation, water quality improvements and biodiversity (£1.5m; 2020-2035)
- River Ching Blue Ribbon, improving access to and enjoyment of the river (£1.5m; 2020-2035)
- Access and improvements to Dagenham Brook at Low Hall (£750,000; 2020-2035)
- Cycleways and footpaths improving connections between Sewardstone and neighbouring countryside (£3m; 2020-35)
- Streetscape improvements around North Chingford Station and wayfinding to nearby green spaces (£1m; 2020-25)
- Landscaping for redevelopment of Whipps Cross hospital, including improved pedestrian and cycling routes, woodland retention and protection of the nearby Epping Forest (£2m; 2020-2035)
- Greening of the A12 using measures such as planting to reduce air pollution and open up cycleways

### **The Epping Forest**

Epping Forest Special Area of Conservation (EFSAC) is under threat from recreational impacts (trampling and harvesting by visitors, disturbance of wildlife) and air pollution. The Council therefore has a duty to ensure that planning decisions do not result in adverse effects to the Forest.

To do this, the Council is working on Suitable Alternative Natural Greenspace (SANGS) and Strategic Access Management and Monitoring (SAMMS) strategies with stakeholders, including the Conservators and City of London, along with other authorities within the 6km Zone of Influence. It has developed an interim approach with Natural England and the stakeholders, securing financial contributions from all housing developments.

A Supplementary Planning Document covering all impacted boroughs is expected to be developed in the medium term.



# Appendix 1 – Infrastructure Delivery Schedule 2020-2035

Project No.	Infrastructure Project	Type	Project Status/ Phasing	Expected Phasing/ Delivery Timescales	Cost (£)	Committed Funding (£)	Identified Funding Gap (£)	Potential Funding Sources	Delivery/ responsible agencies and/or partners	Information source	Local Plan area and/or Site Allocation
1	<b>Walthamstow Central improvements:</b> The Council is working with TfL and Capital & Regional to progress delivery of Step Free Access and a new entrance to the Victoria Line as part of the wider Mall development. The Council is exploring funding to support delivery of the scheme.	Transport	Design & feasibility	2025-2030	£41.5m	-	£40M	TfL Growth Fund, Developer Contributions	TfL, Capital and Regional, LBWF	LBWF Transport Strategy 2018, LIP 3	Central
2	<b>Leyton Underground Station enhancements:</b> The station will be redeveloped in order to support the regeneration of Leyton, including Leyton Mills, supporting the development of over 6,000+ new homes. The proposals include providing step free access at the station, a larger ticket hall, new footbridge over the tracks. Wider improvements are also planned to the public realm around the station which is a gateway for both Leyton town centre and the key growth area of Leyton Mills.	Transport	Permission granted- awaiting final funding and delivery	2020-2025	£18m	£9m	Part Funded	TfL Growth Fund, Developer Contributions (CIL) £9m, Step Free Access programme	TfL, LBWF	LBWF Transport Strategy 2018, LIP 3	South

3	<b>Ruckholt Road Station:</b> delivery of a new station at Ruckholt Road is essential to unlocking large scale redevelopment plans for New Leyton.	Transport	2030-2035	2030	£25m	-	£25m	TfL Growth Fund, Developer Contributions	TfL, Network Rail, LBWF	LBWF Transport Strategy 2018, LIP 3	South
4	<b>St James Street Step Free Access (SFA):</b> Council has an aspiration to deliver Step Free Access to all stations in the borough by 2041. St James is recognised as a priority station on the Overground Network and the Council supports funding bids to the DfT.	Transport	Design & feasibility	2019-2024	£3m	-	£3m	DfT Access for All programme, Developer Contributions	TBC	LBWF Transport Strategy 2018, LIP 3	Central
5	<b>Complete Borough Step Free Access (SFA):</b> The Council is committed to working with TfL to unlock funding opportunities from TfL/DfT, as well as Developer Contributions around stations and across the borough.	Transport	Ongoing	2020-2041	Cost dependent on specific site	-	-	TfL Step Free Access programme, DfT Access for All programme, Developer Contributions	TfL, DfT, LBWF	LBWF Transport Strategy 2018, LIP 3	All Borough
6	<b>Lea Bridge Station improvements:</b> Significant growth is planned around Lea Bridge station and upgrades are needed to support levels of growth as set out in the Local Plan to 2035.	Transport	Expected delivery in 2021/22	2021	£6m	-	£6m	Developer Contributions	TfL, LBWF	LBWF Transport Strategy 2018, LIP 3	Central
7	<b>Station Public Realm interchange improvements:</b> The Council is committed to improving public realm and interchange facilities at all stations in the borough. This includes future works at Waltham Central and Overground stations to improve the environment for walking and cycling.	Transport	Ongoing	2020-2041	£25m	-	£25m	Developer Contributions	Multiple funding streams will need to be identified to deliver these works. These will be	LBWF Transport Strategy 2018, LIP 3	All Borough

									explored through the development of the scheme		
8	<p><b>Hall Farm Curve:</b> Hall Farm Curve is a long- term intervention to provide an additional rail connection directly from Chingford to Stratford.</p> <p>Although funding sources are not allocated to the delivery of this project, the Council is continuing to engage with TfL and Network Rail to build consensus and support for the scheme.</p>	Transport	Design & feasibility	2030-2041	£40m	-	£40m	Sources – TBC	TfL, DfT, LBWF	LBWF Transport Strategy 2018, LIP 3	Central
9	<p><b>Coppermill Village Liveable Neighbourhood:</b> Delivery of the designed, approved and finalised Liveable Neighbourhoods Scheme to support Healthy Streets and MTS objectives, and Waltham Forest’s 15-minute neighbourhoods. The scheme includes a range of traffic reduction, active travel and public realm improvements that were developed between 2018 and 2020 and approved for construction. Delivery paused/deferred due to Covid-19 and withdrawal of TfL funding. Emergency funding secured to deliver a small number of the core traffic reduction proposals using low cost/interim measures, which at a minimum will</p>	Transport	Design & feasibility	2021-2023	£2.5m	-	£2.5M	TfL	LBWF Highways	LIP 3, LBWF Transport Strategy 2018	Central



	need to be reviewed and upgraded within the next 18 -24 months										
10	<p><b>South Leyton/Leytonstone Liveable Neighbourhoods:</b> The council submitted joint bids with Newham to TfL in 2018 and 2019 for a Liveable Neighbourhood Scheme to support Healthy Streets and MTS objectives, and Waltham Forest’s 15-minute neighbourhoods. Initial funding was due to be provided in 2020 but has been withdrawn due to Covid-19. The bid included four low traffic neighbourhoods and improvements to two major north-south strategic corridors (High Road Leyton and High Road Leytonstone). A low cost/temporary Low Traffic Neighbourhood scheme has been introduced experimentally using emergency funding in the interim, and if supported will need to be made permanent as a minimum</p>	Transport	Design & feasibility	2021- 2024	£7M	-	£6M	TfL, Developer Contributions	LBWF Highways	LIP 3, LBWF Transport Strategy 2018	South
11	<p><b>Higham Hill and Lloyd Park Liveable Neighbourhood:</b> Liveable Neighbourhood Scheme to support Healthy Streets and MTS objectives, and the Waltham Forests 15-minute neighbourhoods. Scheme already developed to feasibility level and includes two low traffic neighbourhoods, improvements to key junctions on Blackhorse Lane and Billet</p>	Transport	Design & feasibility	2022-2025	£7M	-	£7M	TfL, Developer Contributions	LBWF Highways	LIP 3, LBWF Transport Strategy 2018	Central

	Road, and protected cycle routes on Chingford Road.										
12	<p><b>Continued delivery of Borough-wide Liveable Neighbourhoods programme:</b> The borough is committed to extending its approach to delivering neighbourhood level improvements across the borough to support Healthy Streets and MTS objectives, and the Waltham Forest's 15-minute neighbourhoods.</p> <p>The borough will look to fund this through LIP funding, and development led contributions, however, given the geographic scale of the areas in question, further major funding streams are likely to be required.</p>	Transport	Design & feasibility	2024 - 2041	£75M	-	£75M	TfL, Developer Contributions	LBWF Highways	LIP 3, LBWF Transport Strategy 2018	All Borough
13	<p><b>Leyton Green:</b> The borough has a long-held aspiration to deliver changes at Leyton Green to improve the public realm, cycling and walking infrastructure, and bus reliability and journey times.</p> <p>Further funding opportunities will be explored to allow further development of the scheme.</p>	Transport	Design & feasibility	2020 - 2025	£3.5m	-	£3.5M	TfL, Developer Contributions	LBWF Highways	LIP 3	South
14	<p><b>Primary Cycle Network, Forest Road:</b> It is the Council's aspiration to build high quality, segregated cycle facilities across a number of main roads in the borough to expand the Enjoy Waltham Forest Network, deliver the boroughs aspirational network, and meet mesh</p>	Transport	Design & feasibility	2020 - 2023	£12m	-	£12M	TfL, Developer Contributions	LBWF Highways	LIP 3, LBWF Transport Strategy 2018	Central

	density requirement of the MTS. The Council has a feasibility design for the section of Forest Road between Bell Junction and Woodford New Road, which once delivered would provide a complete, continuous route from Haringey to the A406, connecting into the Town Hall Civil campus development and other major developments.										
15	<b>Primary Cycle Network, Hoe Street:</b> It is the Council's aspiration to build high quality, segregated cycle facilities across a number of main roads in the borough to expand the Enjoy Waltham Forest Network, deliver the borough's aspirational network, and meet mesh density requirement of the MTS. The Council has a feasibility design for the section of Hoe Street between Walthamstow Central and Lea Bridge road, which once delivered would fully connect Walthamstow Central and Town Centre to the Council's flagship Lea Bridge Road scheme.	Transport	Design & feasibility	2020 - 2023	£2.5M	-	£2.5M	Tfl, Developer Contributions	LBWF Highways	LIP 3, LBWF Transport Strategy 2018	Central
16	<b>Primary Cycle Network, Woodford New Road/Snaresbrook Road junction:</b> It is the Council's aspiration to build high quality, segregated cycle facilities across a number of main roads in the borough to expand the Enjoy Waltham Forest Network, deliver the boroughs aspirational network, and meet mesh	Transport	Design & feasibility	2020 - 2022	£1M	-	£1M	Tfl, Developer Contributions	LBWF Highways	LIP 3, LBWF Transport Strategy 2018	Central



	density requirement of the MTS. The Council has a feasibility design for the Woodford New Road/Snaresbrook Road junction, which once delivered would address the one remaining gap in the Lea Bridge Road – Woodford New Road Cycle route (Cycleway 23) connecting Hackney with Redbridge										
17	<b>Primary Cycle Network, Forest Road to Chingford Mount:</b> It is the Council's aspiration to build high quality, segregated cycle facilities across a number of main roads in the borough to expand the Enjoy Waltham Forest Network, deliver the borough's aspirational network, and meet mesh density requirement of the MTS. Connecting Highams Park and Chingford in the north of the borough with Walthamstow is a key priority to the Council. A north-south spinal route forms an essential part of the Council's vision, initially connecting Walthamstow to Chingford Mount in the most direct and convenient way possible	Transport	Design & feasibility	2020 - 2025	£5M	-	£5M	TfL, Developer Contributions	LBWF Highways	LIP 3, LBWF Transport Strategy 2018	North
18	<b>Primary Cycle Network, Lea Bridge Road to Leyton:</b> It is the Council's aspiration to build high quality, segregated cycle facilities across a number of main roads in the borough to expand the Enjoy Waltham Forest Network, deliver the boroughs aspirational network, and meet mesh	Transport	Design & feasibility	2020 - 2025	£10M	-	£10M	TfL, Developer Contributions	LBWF Highways	LIP 3, LBWF Transport Strategy 2018	south

	<p>density requirement of the MTS. Connecting Lea Bridge Road with Leyton and onwards to Stratford and QEOP is a key priority and this corridor has been identified as the seventh highest for cycling potential in London. A north-south spinal route forms an essential part of the Council's vision, connecting Lea Bridge Road with Leyton via High Road Leyton, also providing opportunity to unpick the existing Grange Park Road gyratory.</p>										
19	<p><b>Primary Cycle Network:</b> It is the Council's aspiration to build high quality, segregated cycle facilities across a number of main roads in the borough to expand the Enjoy Waltham Forest Network, deliver the borough's aspirational network, and meet mesh density requirement of the MTS. Where protected/segregated space on main roads is not viable or does not provide the best alignment, alternative quietway type routes will be used to ensure a dense, connected network. The borough will look to fund this through LIP funding and development led contributions, however, given the high cost associated with the delivery of main road infrastructure, further major funding streams are likely to be required.</p>	Transport	Design & feasibility	2020 - 2035	£150m	-	£150m	TfL funding, Developer Contributions	TfL, LBWF	LBWF Transport Strategy 2018, LIP 3	All Borough

20	<p><b>Leytonstone Gyratory:</b> The borough is progressing funding opportunities to deliver initial changes to Leytonstone gyratory through the GLA Low Emissions Neighbourhood fund.</p> <p>Further funding opportunities will be explored following development of the initial scheme for more substantive long-term changes.</p>	Transport	Design & feasibility	2020 - 2025	£4m	-	£4m	TfL funding, Developer Contributions	TfL, LBWF	LBWF Transport Strategy 2018, LIP 3	south
21	<p><b>Residential 20mph Zones - Chingford</b></p> <p>The Council has committed to making all residential roads within the borough 20mph. As of 2019, all of the borough south of New Road, E4 is 20mph, with plans for the remaining northern part of the borough in various stages of development and consultation.</p>	Transport	Design & feasibility	2020 - 2023	£3m	-	£3m	TfL funding, Developer Contributions	TfL, LBWF	LBWF Transport Strategy 2018, LIP 3	North
22	<p><b>Residential Secure Cycle Parking:</b> Since 2015 the Council's on-street residential bike hangar portfolio has grown to over 500 units, providing parking facilities for 3000 residents. Demand continues to significantly outstrip supply with an estimated 5000 on the Council's waiting list (c. 850 units).</p>	Transport	Design & feasibility	2020 - 2025	£2.5M	-	£2.5M	TfL funding, Developer Contributions	TfL, LBWF	LBWF Transport Strategy 2018, LIP 3	All borough
23	<p><b>Secure Cycle Parking at stations:</b></p> <p><b>Blackhorse Junction:</b> Safe, secure, convenient cycle parking at stations and public transport facilities is key to facilitating longer multi-modal journeys. The Council currently has seven secure cycle parking hubs within its portfolio, ranging from 30 – 150 spaces. Site</p>	Transport	Design & feasibility	2020 - 2021	£0.5M	-	£0.5M	TfL funding, Developer Contributions	TfL, LBWF	LBWF Transport Strategy 2018, LIP 3	Central



	designs have been developed for 2 cycle hub facilities at Blackhorse Junction station which will accommodate expected demand associated with Housing Zone redevelopment and regeneration in the area										
24	<b>Secure Cycle Parking at stations:</b> <b>General</b> Safe, secure, convenient cycle parking at stations and public transport facilities is key to facilitating longer multi-modal journeys. The Council currently has 7 secure cycle parking hubs within its portfolio, ranging from 30 – 150 spaces. The long-term aspiration is to have secure facilities at all stations, including those on the Gospel Oak to Barking Line	Transport	Design & feasibility	2020 - 2025	£3M	-	£3M	TfL funding, Developer Contributions	TfL, LBWF	LBWF Transport Strategy 2018, LIP 3	Central
25	<b>Walthamstow Central Active Travel Hub</b> Waltham Forest are planning to deliver a landmark building that will become the borough's cycling and behaviour change centre at the heart of the Waltham Forest. Situated on Selborne Road at the Walthamstow Central Transport Interchange the new building will play an important part in providing cycling facilities to our residents and visitors to the borough whilst making a clear statement of the boroughs support for walking and cycling in Waltham Forest - a focal point for the continued delivery of our award-	Transport	Design & feasibility	2020 - 2025	£4M	-	£4M	TfL funding, Developer Contributions	TfL, LBWF	LBWF Transport Strategy 2018, LIP 3	Central

	<p>winning behaviour change and complimentary measures programmes.</p> <p>The Active Travel Centre The new active travel centre will operate as a central base for secure cycle parking, borough cycle loan schemes, bicycle repair, local walking and cycling information and for the boroughs' travel behaviour change unit. The building focuses on:</p> <ul style="list-style-type: none"> <li>• Environmental sustainability</li> <li>• Accessibility for all</li> <li>• The promotion of sustainable transport, and</li> </ul> <p>The creation of a dynamic new transport interchange linking all modes of transport.</p>										
26	<p><b>Chingford Mount Town Centre Improvements:</b> Masterplanning work is currently underway looking at how the Town Centre can be regenerated and improved, with better links to Walthamstow, Chingford north and Meridian Water. Potential improvements include a new public square around Albert Crescent, relocated bus interchange; walking, cycling and public realm improvements to Old Church Road and westbound connectivity to Meridian Water</p>	Transport	Design & feasibility	2020 - 2030	£12M	-	£12M	TBC	LBWF Highways		All Borough
27	<p><b>Waltham Forest Gigabit Borough:</b></p>	Digital	Ongoing	2020-2030	£4.5m - £5.5m	£800k	£3.7 - £4.7m	SIP Funding, Developer	LBWF	LBWF Digital	All Borough

	<p>The SIP funded programme includes build out of the red route, CCTV camera upgrades and some upgrade to the existing ducting</p> <p>The proposed Green route is projected to cost £700k - £1m, depending on routes and whether it also funds camera upgrades.</p> <p>Moving forward there is an option to link public sector sites (CCTV and WAN) and commercial sites such as mobile base stations/small sites across the Borough. This is projected to cost £3-4m.</p>							Contributions Private Sector investment, Other sources as appropriate		Strategy 2018	
28	<p><b>Electricity Supply - Hackney to Exeter Road capacity improvements:</b> Work is currently being carried out to reinforce the circuits between Hackney and Exeter Road substations to provide for future upgrades which will enable the substations to operate a higher primary voltage and with increased capacity. This scheme has been funded by UK Power Networks at a planned cost of £13.7m with completion expected in 2022.</p> <p>Potential works have also been identified to rebuild the site known as Walthamstow Tee Point (at the junction of Blackhorse Lane and Exeter Road). The area is currently used to house</p>	Energy	Ongoing	2022	£13.7m	£13.7m	-	UKPN	UKPN	UKPN Network Planning Team	Central, South



	three tee points, but if the site could be developed to build a 132kV switchboard it would add interconnectivity to the network and provide additional connection points, greatly improving network resilience and capacity to accommodate future growth.										
29	<b>Walthamstow Tee Point:</b> Potential works have also been identified to rebuild the site known as Walthamstow Tee Point (at the junction of Blackhorse Lane and Exeter Road). The area is currently used to house three tee points, but if the site could be developed to build a 132kV switchboard it would add interconnectivity to the network and provide additional connection points, greatly improving network resilience and capacity to accommodate future growth.	Energy	Design & feasibility	2025	TBC	TBC	TBC	UKPN	UKPN, LBWF	UKPN Network Planning Team	Central
30	<b>Low Hall Depot:</b> Replacement Council Depot facility, facilitated through redevelopment. The new depot provides a healthy, safe and secure working environment for all staff, contractors and visitors. It will have a more efficient and effective use of space for delivery of all re-provided services, provides for the use of modern technology and the Council's new ways of working in service delivery. The new depot enables the Council to meet its	Waste	Design & feasibility	Phase 1 2024	Project ed £20 GDV	Investment- led delivery	NA	Capital Receipt	LBWF	Capital Programm e	Central

	statutory and third-party contractual obligations.										
31	<b>Waste Collection Vehicles:</b> The Council's Waste collection service will normally require a new collection round and a new vehicle for every extra 6,000 properties that are built. This equates to 4.5 additional vehicles over the plan period to 2035.	Waste	Ongoing	2020-2035	£1.125 m (+ staff costs)	NA	£1.125m	LBWF, Developer Contributions	LBWF	LBWF Waste Services	All Borough
32	<b>Food Waste Collection:</b> The Council has an aspiration to implement food waste collection services in the borough. The food collection service would require approximately six crews to collect the food waste.	Waste	Planned	2023	£1.5m (+ staff costs)	Na	£1.5m	LBWF, Developer Contributions	LBWF	LBWF Waste Services	All Borough
33	<b>MET Police - District Ward Office Provision:</b> The Metropolitan Police Service (MPS) has identified the need for District Ward Office (DWO) accommodation in the borough as part of their Estates Strategy. The MPS has identified the following locations as in need of DWO coverage: <ul style="list-style-type: none"> <li>• Hale End &amp; Highams Park</li> <li>• Chapel End</li> <li>• Higham Hill</li> <li>• William Morris</li> <li>• Markhouse</li> <li>• Wood Street</li> <li>• Cann Hall</li> <li>• Cathall</li> </ul>	Emergency Services	Ongoing	2020 - 2035	NA	NA	NA	Developer Contributions	MET Police, GLA, LBWF	Local Plan Representation	All Borough/ Wards as identified

34	<p><b>Whipps Cross University Hospital redevelopment:</b> Comprehensive redevelopment of Whipps Cross Hospital area of change as a state-of-the-art University Hospital, providing a minimum of 1500 quality new homes including genuinely affordable homes for workers Provides a new neighbourhood centre with a range of other uses to deliver a cultural heart</p> <p>The scheme will also improve public realm and public spaces across the area and walking and cycling accessibility, connectivity, permeability and legibility to and from Whipps Cross Hospital, to Wood Street, Bakers Arms and Leytonstone, as well as other identified routes.</p>	Health	Ongoing	Construction Commencing 2022		Government commitment to provide a new facility. Capital costs supported by the provision of on-site residential development.		Central Government/ NHS, capital receipt	Barts Trust, WEL CCG, LBWF	National priority - Strategic Business Case	Central
35	<p><b>Sutherland Road Surgery:</b> The surgery will have 7 consulting and 3 treatment rooms, with several multi-purpose counselling and meeting rooms Although the current practice list is only 6,500 patients, the existing premises were considered unsuitable and too cramped. This opportunity will enable the practice to take undertake clinician training and to open their lists to new patients</p>	Health	On-site	2020/21	£2.4m	£2.4m	NA	S.106, CCG	LBWF, CCG	CCG Strategic Estates Plan	Central

36	<p><b>St James Surgery (Site C):</b> Plot C of the LBWF South Grove housing development has been identified as an opportunity to replacement St James’s Health Centre with a new, purpose built 1,500 m2 facility.</p> <p>The Kavar practice in the current surgery has c15,000 list size and the new accommodation and ways of working will meet the needs of the increased population, which is anticipated to reach over 20k. The health centre design provides 22 consult/exam rooms, 3 treatment rooms, training and meeting spaces. The practice will be co-located with Barts Health who deliver sexual health and MSK. Additionally accommodation for new wellbeing and ICS are being considered.</p>	Health	Planning permission granted	Expected Opening 2022	£3.4m	TBC	TBC	S.106, CCG	LBWF, CCG	CCG Strategic Estates Plan	Central
37	<p><b>The Score/Coronation Square:</b> A new health centre, with over 2000m<sup>2</sup> accommodation, is proposed to be developed for 30,000 residents on the site, on Oliver Road, opposite Leyton Orient Football ground. New community space, with improved transport links, housing, retail centre, a pharmacy, a crèche and a gym will also form part of the complex.</p> <p>The health centre will enable the practices from Oliver Road to relocate</p>	Health	Planning permission granted	2026/27	£9.4m	TBC	TBC	S.106, CCG	LBWF, CCG	CCG Strategic Estates Plan	South

	and work alongside other for local health and social care partners including the voluntary care sector (VCS) that would align with the One Public Estate's strategy.										
38	<b>Silverthorne Health Centre:</b> New Build on existing site or alternative within the area	Health	Phase 2	2027/28	£6.2m	TBC	TBC	S.106, CCG	LBWF, CCG	CCG Strategic Estates Plan	Chingford
39	<b>Lea Bridge – New Health Centre:</b> Site to Be identified (Between Markhouse Rd & Lea Bridge Station).  A potential site has been identified at former Leyton FC/Wingate Stadium site.	Health	Emerging site allocation	2025/26	£4.1m	TBC	TBC	TBC	WEL CCG, LBWF	CCG Strategic Estates Plan	Lea Bridge
40	<b>Leyton Green Health Centre:</b> New Build on existing site or alternative within the area	Health	Full SEP Vision	2024/25	£7.2m	TBC	TBC	S.106, CCG	NELFT, WEL CCG, LBWF	CCG Strategic Estates Plan	South Leyton/Leytonstone
41	<b>Nasberry Health Centre:</b> new build/replacement facility	Health	Full SEP Vision	2024/25	£3.6m	TBC	TBC	TBC	NELFT, WEL CCG, LBWF	CCG Strategic Estates Plan	Chingford
42	<b>Langthorne Health Centre:</b> New Build on existing site or alternative within the area	Health	Full SEP Vision	2027/28	£3m	TBC	TBC	S.106, CCG	NELFT, WEL CCG, LBWF	CCG Strategic Estates Plan	South Leyton/Leytonstone
43	<b>North East London Foundation Trust (NELFT) Oak Health Centre</b>	Health	Full SEP Vision	2024/25	£2.4m	TBC	TBC	S.106, CCG, NELFT	NELFT, WEL CCG, LBWF	CCG Strategic Estates Plan	South Leyton/Leytonstone
44	<b>Chingford Health Centre:</b> New Build on existing site or alternative within the area	Health	Full SEP Vision	2027/28	£7.2m	TBC	TBC	S.106, CCG	NELFT, WEL CCG, LBWF	CCG Strategic Estates Plan	North Chingford



45	<b>Forest Road Replacement:</b> Site to be identified		Full SEP Vision	2030/31	£4.3m	TBC	TBC	S.106, CCG	NELFT, WEL CCG, LBWF	CCG Strategic Estates Plan	Central Walthams tow
46	<b>Relocation of Hospital Services to Community Setting:</b> The Council, through discussions with WEL CCG and Barts Trust are aware of a number of clinical services currently provided on the Whipps Cross site to move into the community. This would help provide care closer to the home and to a more appropriate clinical setting, but would also support the longer term redevelopment of the Whipps Cross site itself. Discussions between the Council and various health stakeholders are ongoing.	Health	Ongoing	Various	TBC	TBC	TBC	S.106, CCG	LBWF, CCG, Barts Health Trust, NHSPS	CCG Strategic Estates Plan	Boroughw ide
47	<b>Leytonstone School 1FE Expansion (permanent):</b> Works within the locally listed building to create additional general teaching classrooms and ancillary accommodation, a new library and to create an additional staircase.	Education & Childcare	On Site	September 2021	TBC	TBC	NA	NA	LBWF Capital Delivery	Schools Capital Programm e	South Leytonsto ne
48	<b>Norlington Boys School (Academy) 1FE Expansion (Permanent).</b> Works are on site to create a new sports hall and ancillary landscaping works, to remodel existing accommodation to create additional general teaching classrooms, dining and servery areas. In addition, the school is bounded on one side by railway arches which they rent	Education & Childcare	On Site	September 2022	TBC	TBC	NA	NA	LBWF Capital Delivery	Schools Capital Programm e	South

	as additional play areas and subject to legal and lease agreements two of these are planned to be enclosed to provide teaching and learning spaces. Works to the sports hall are due to be completed by the end of September 2020.										
49	<p><b>Kelmscott School 1FE Expansion:</b> To minimise disruption to the school, which will remain in operation throughout the construction, three distinct construction phases are proposed. The initial phase which commenced on site 14 March 2020 includes remodelling three classrooms, extending the existing dining area and building a new studio and associated toilets.</p> <p>The second phase is to build a new general teaching classroom block in time for the permanent expansion, and the third and final phase is limited refurbishment and remodelling of existing accommodation to support specialist subject suiting.</p>	Education & Childcare	On Site	September 2022	TBC	TBC	NA	LBWF Schools Capital Programme	LBWF Capital Delivery	Schools Capital Programme	Central (Walthamstow West)
50	<p><b>1FE Secondary Expansion (Central) – Site TBC:</b> A potential 1FE expansion and Alternative Provision Unit in the Central area of the borough by 2023. Contingent on the two sequential bulge</p>	Education & Childcare	Consultation	September 2023	TBC	TBC	TBC	LBWF Schools Capital Programme	LBWF Capital Delivery	Schools Capital Programme	Central

	classes filling, consult on permanent expansion by 1FE for September 2023.										
51	<p><b>1FE Secondary Expansion (South) – Site TBC:</b></p> <p>A potential 1FE expansion and Alternative Provision Unit in the Central area of the borough by 2023. Contingent on the two sequential bulge classes filling, consult on permanent expansion by 1FE for September 2023.</p>	Education & Childcare	Consultation	September 2023	TBC	TBC	TBC	LBWF Schools Capital Programme	LBWF Capital Delivery	Schools Capital Programme	South
52	<p><b>All age groups: Suntrap Forest Education Centre:</b></p> <p>The current investment addresses condition and health and safety issues and expands the education offer to include residential short stays as well as camping. It offers Waltham Forest pupils a unique educational opportunity within a forest setting and the current investment ensures a more sustainable future.</p> <p>Works include a timber dining and cooking pavilion, residential pods in the forest, extensive landscaping works to enhance the site sustainability and accessibility, as well as enhanced teaching and learning spaces indoors and externally.</p>	Education & Childcare	On Site	September 2020	£4.8m	£4.8m	NA	LBWF Schools Capital Programme, CIL, NCIL	LBWF Capital Delivery	Schools Capital Programme	Owned and managed by LBWF but located in Epping Forest District Council area

53	<b>Juniper House (Early Years Facility):</b> 53 Place Nursery delivered as part of wider regeneration scheme comprising residential and commercial uses in the heart of Walthamstow.	Education & Childcare	On Site	Summer 2022	TBC	TBC	TBC	Capital Receipt, S.106	LBWF Capital Delivery, LBWF Early Years, LBWF Regeneration	Council Capital Programme	Central Walthamstow
54	<b>EMD Cinema (Walthamstow Granada):</b> Restoration and reopening of the iconic 1000 seat building as a place for comedy and other entertainment and managed by Soho Theatre. Proposals also include a Community Suite.	Culture	On Site	2021	£25m	TBC	TBC	LBWF Capital Programme, S.106, NCIL, CIL, Private Sector	LBWF, SOHO Theatres	Council Capital Programme	Central
55	<b>Town Hall Campus – Fellowship Square</b> Phase 1 - Civic Square & Fountain - £1.45million  Phase 2 - New Civic Ground Floor (restaurant and café, public space etc) - - Cycle Hub - Nursery - Landscaping & Chestnuts Field	Culture	On Site	Phase 1 – 2021 Phase 2 - 2023	Phase 1 - £1.45m  Phase 2 - £6.7m	£1.45m  £6.7m	LBWF Private Sector investment	Capital Programme, capital receipt, developer contributions	LBWF, Countryside	Council Capital Programme	Central
56	<b>The Regal Cinema:</b> The proposal will provide two cinema screens with an ancillary café bar/restaurant, supported by the delivery of 30 residential units.	Culture	Planning Application Approved – June 2020	Phase 1, by 2025	Unknown	NA	NA	Private sector investment	Mammoth Capital	Regeneration priority for the Borough	North of Borough
57	<b>Making Places Programme - Blackhorse Road / Stoneydown Park:</b> Extend Stoneydown Park by enclosing the	Culture	Expected delivery	2020/21	£81k	£81k	NA	LBWF Making Places Fund	Architects: What if Internal stakeholder	Making Places Round 1	High Street

	currently open piece of land adjacent to Blackhorse Road		September 2020						rs: Parks, Highways, Regen External stakeholders: Greener City Fund		
58	<b>Making Places Programme - Brierley Road:</b> Creation of a new and improved civic identity, constructed from brick.	Culture	Construction completed Planting scheme to start in Autumn	2020/21	£45k	£52.5k	NA	LBWF Making Places Fund	Architects: New Practice Internal stakeholders: Highways, Neighbourhoods External stakeholders:	Making Places Round 1	Cathall
59	<b>Making Places Programme - Abbots Park:</b> Improved natural play area within the Park incl. sculptural elements, informal play equipment and improvement to biodiversity (new planting).	Culture	Expected delivery September 2020	2020/21	£43k	£52.5k	NA	LBWF Making Places Fund	Architects: The Decorators Internal stakeholders: Parks External stakeholders:	Making Places Round 1	Forest
60	<b>Making Places Programme - Lea Bridge Library Garden:</b> Creative brief to be developed in conjunction with Libraries and the Architects commissioned to deliver the Lea Bridge Library site development.	Culture	Concept stage  In line with the Lea Bridge Library redevelopment plan. Anticipat	2020/21	£40k	£52.5k	NA	LBWF Making Places Fund	Architects: Studio Weave  This project is managed by another team with Making Places contributin	Making Places Round 1	Lea Bridge



			ed completi on late summer 2020.						g to the scheme.		
61	<b>Making Places Programme - Bridge at Wood Street Station:</b> A garden-themed mural and lighting design, beneath the bridge at Wood Street Station, creating an attractive gateway into the borough.	Culture	Engagem ent	2020/21	£52.5k	£52.5k	NA	LBWF Making Places Fund	Artist: Eleanor Hill Internal stakeholde rs: Highways, Neighbour hoods External stakeholde rs: Network Rail	Making Places Round 2	Wood Street
62	<b>Making Places Programme - Leyton Midland Road Station:</b> Hand-painted typographic mural celebrating local makers beneath the bridge at Leyton Midland Road Station and improved lighting scheme.	Culture	Engagem ent	2020/21	£52.5k	£52.5k	NA	LBWF Making Places Fund	Artist: Philips Walmsley Internal stakeholde rs: Highways, Neighbour hoods External stakeholde rs: Network Rail	Making Places Round 2	Leyton
63	<b>Making Places Programme - Underpass between Larkshall Road and Hatch Lane:</b> Dynamic lighting scheme and sound installation within the underpass.	Culture	Engagem en	2020/21	£40k	£40k	NA	LBWF Making Places Fund	Practice: Insight Lighting Internal stakeholde rs: Highways,	Making Places Round 2	Larkwoo d

									Neighbourhoods External stakeholders: Network Rail		
64	<b>Making Places Programme - Hyh House Chingford Road:</b> Resident engagement activities and events leading to planting of wildflower meadow and an orchard.	Culture	Engagement Expected delivery Autumn 2020	2020/21	£40k	£40k	NA	LBWF Making Places Fund	Artist: Build Up Internal stakeholders: Housing, Neighbourhoods External stakeholders:	Making Places Round 2	Chapel End
65	<b>Making Places Programme - Bulwer Road (junction with Drayton Rd and Southwest Rd):</b> Landscape scheme of semipermeable surfaces and rain gardens.	Culture	Proposal Expected delivery Autumn 2020	2020/21	£40k	£40k	NA	LBWF Making Places Fund	Artist: Hut Architecture Internal stakeholders: Highways, Neighbourhoods External stakeholders:	Making Places Round 2	Leytonstone
66	<b>The Score:</b> 13.64 The Score is the Council's new flagship facility for community sport in the borough. It will be home to a 90.5m X 34.5m plus overruns, matching the footprint of the existing Score Centre provision, and has a clear height of	Sports & Leisure	Phase 1	2024/25	TBC	TBC	NC	LBWF, capital receipt, private sector investment	LBWF,	Capital Receipt, Private sector investment, S.106	South

	<p>7.5m. The following sports will be catered for:</p> <ul style="list-style-type: none"> <li>• Basketball Premier (5 courts)</li> <li>• Futsal International (1 courts)</li> <li>• Community space (1)</li> <li>• Netball Club (5 courts)</li> <li>• Badminton Club (20 courts)</li> <li>• Handball Premier (1 court)</li> <li>• Volleyball Premier (5 courts)</li> </ul>										
67	<b>Abbots Park:</b> resurface the football pitch with tarmac	Sports & Leisure	Phase 1	2023	£35k	£35k	NA	Neighbourhood Community Infrastructure Levy (NCIL)	LBWF		Forest
68	<b>Jubilee Sports Ground:</b> decoration of changing rooms, replacement showers and toilets, installation of females' facilities. Drainage to pitches	Sports & Leisure	Phase 1	2023	£32k	£32k	NA	Neighbourhood Community Infrastructure Levy (NCIL)	LBWF		Hatch Lane
69	<b>Rolls Park Sports Ground:</b> decoration of changing room facilities replacement of showers and toilets, installation of female facilities. Drainage to the pitches.	Sports & Leisure	Phase 1	2023	£43k	£43k	NA	Neighbourhood Community Infrastructure Levy (NCIL)	LBWF		Larkwood
70	<b>Salisbury Hall Playing Fields:</b> decoration of changing facilities and replacement floodlights.	Sports & Leisure	Phase 1	2023	£40k	£40k	NA	Neighbourhood Community Infrastructure Levy (NCIL)	LBWF		Valley
71	<b>Drapers Field:</b> Replacement 3G pitch and decoration of changing facilities.	Sports & Leisure	Phase 1	2023	£210k	£210k	NA	Neighbourhood Community Infrastructure Levy (NCIL)	LBWF		Cathall
72	<b>Parmiters Sports Ground:</b> drainage to pitches	Sports & Leisure	Phase 1	2023	£24k	£24k	NA	Neighbourhood Community Infrastructure Levy (NCIL)	LBWF		Valley
73	<b>Britannia Sports Ground:</b> drainage to pitches	Sports & Leisure	Phase 1	2023	£24k	£24k	NA	Neighbourhood Community	LBWF		Higham Hill

								Infrastructure Levy (NCIL)			
74	<b>Low Hall Sports Ground:</b> replace floodlights	Sports & Leisure	Phase 1	2023	£30k	£30k	NA	Neighbourhood Community Infrastructure Levy (NCIL)	LBWF		Markhouse
75	<b>Abbots Park:</b> <ul style="list-style-type: none"> <li>General park infrastructure improvements</li> </ul> Play area improvements: replacement of junior climbing unit and renew surfacing	Play	Phase 1	2023	£30k £80k	£30k £80k	NA	Neighbourhood Community Infrastructure Levy (NCIL)	LBWF	Play Improvement Programme	Forest
76	<b>Acadia Road Play Area:</b> Install surfacing on mounds and renew safer surfacing	Play	Phase 1	2023	£100k	£100k	NA	Neighbourhood Community Infrastructure Levy (NCIL)	LBWF	Play Improvement Programme	Cann Hall
77	<b>Arnett Square:</b> Refurbish junior and young children's play areas	Play	Phase 1	2023	£100k	£100k	NA	Neighbourhood Community Infrastructure Levy (NCIL)	LBWF	Play Improvement Programme	Valley
78	<b>Bisterne Avenue Park:</b> <ul style="list-style-type: none"> <li>Refurbishment of ball court</li> <li>Patch repair to paths around the park</li> </ul>	Play	Phase 1	2023	£50k £20k	£50k £20k	NA	Neighbourhood Community Infrastructure Levy (NCIL)	LBWF	Play Improvement Programme	Wood Street
79	<b>Bridge Road Play Area:</b> Renew surfacing in play area	Play	Phase 1	2023	£100k	£100k	NA	Neighbourhood Community Infrastructure Levy (NCIL)	LBWF	Play Improvement Programme	Lea Bridge
80	<b>Cambrian Gardens:</b> Replace picnic table	Play	Phase 1	2023	£3k	£3k	NA	Neighbourhood Community Infrastructure Levy (NCIL)	LBWF	Play Improvement Programme	Lea Bridge

81	<b>Cann Hall Park:</b> <ul style="list-style-type: none"> <li>Replace safer surfacing in junior play area</li> <li>Installation of play equipment and line markings for under 5's</li> <li>Replacement of wooden skate ramps with concrete skate park</li> </ul> Adjust/rehang gate and re-level paths to remove ponding issues	Play	Phase 1	2023	£50k £40k £200k £30k	£50k £40k £200k £30k	NA	Neighbourhood Community Infrastructure Levy (NCIL)	LBWF	Play Improvement Programme	Cann Hall
82	<b>Chase Lane Park:</b> <ul style="list-style-type: none"> <li>Refurbishment of adventure play equipment and safer surfacing</li> <li>Refurbishment of skate park</li> <li>Patch repair to paths around the park and widen path to accommodate maintenance vehicles</li> </ul> Refurbish subsided entrance gate, fence and path from Waverley Road	Play	Phase 1	2023	£60k £80k £30k £50k	£60k £80k £30k £50k	NA	Neighbourhood Community Infrastructure Levy (NCIL)	LBWF	Play Improvement Programme	Valley
83	<b>Coppermill Park:</b> Refurbishment of football area, adventure play equipment and safer surfacing	Play	Phase 1	2023	£50k	£50k	NA	Neighbourhood Community Infrastructure Levy (NCIL)	LBWF	Play Improvement Programme	High Street
84	<b>Coronation Gardens:</b> <ul style="list-style-type: none"> <li>Resurface area around band stand to prevent flooding</li> <li>Refurbishment of seats</li> </ul>	Play	Phase 1	2023	£40k £25k	£40k £25k	NA	Neighbourhood Community Infrastructure Levy (NCIL)	LBWF	Play Improvement Programme	Leyton
85	<b>Dames Road Play Area:</b>	Play	Phase 1	2023	£70k	£70k	NA	Neighbourhood Community Infrastructure Levy (NCIL)	LBWF	Play Improvement	Cann Hall



	Resurface asphalt surfacing, install play equipment for under 5's and general refurbishments									Programme	
86	<b>Drapers Field:</b> <ul style="list-style-type: none"> <li>Install artificial surfacing under play area to prevent further ground erosion</li> </ul> Install play equipment for under 5's	Play	Phase 1	2022	£150k £50k	£150k £50k	NA	Neighbourhood Community Infrastructure Levy (NCIL)	LBWF	Play Improvement Programme	Cathall
87	<b>Drysdale Park:</b> <ul style="list-style-type: none"> <li>Patch repairs to pats</li> </ul> Install concrete tennis table	Play	Phase 1	2023	£50k £3k	£50k £3k	NA	Neighbourhood Community Infrastructure Levy (NCIL)	LBWF	Play Improvement Programme	Chingford Hatch
88	<b>Epi-Centre Play Area:</b> <ul style="list-style-type: none"> <li>Refurbishment of ball court</li> </ul>	Play	Phase 1	2023	£50k	£50k	NA	Neighbourhood Community Infrastructure Levy (NCIL)	LBWF	Play Improvement Programme	Cathall
89	<b>Folly Lane Play Area:</b> Patch repair to path	Play	Phase 1	2023	£30k	£30k	NA	Neighbourhood Community Infrastructure Levy (NCIL)	LBWF	Play Improvement Programme	Higham Hill
90	<b>Greenleaf Road Play Area:</b> Refurbish raised planters	Play	Phase 1	2023	£20k	£20k	NA	Neighbourhood Community Infrastructure Levy (NCIL)	LBWF	Play Improvement Programme	William Morris
91	<b>Greenway Avenue Community Garden:</b> <ul style="list-style-type: none"> <li>Installation of entrance signs</li> </ul> Replace low section of perimeter fence	Play	Phase 1	2023	£5k £5k	£5k £5k	NA	Neighbourhood Community Infrastructure Levy (NCIL)	LBWF	Play Improvement Programme	Wood Street
92	<b>Harrow Road Play Area:</b> Renew safer surfacing	Play	Phase 1	2023	£40k	£40k	NA	Neighbourhood Community Infrastructure Levy (NCIL)	LBWF	Play Improvement Programme	Cann Hall

93	<b>Henry Reynolds Gardens:</b> <ul style="list-style-type: none"> <li>Re-surface basketball court, remove ponding issue and tree root trip hazards and re-paint court</li> </ul> Replace grass matting with artificial grass under trail equipment	Play	Phase 1	2023	£30k	£30k	NA	Neighbourhood Community Infrastructure Levy (NCIL)	LBWF	Play Improvement Programme	Leytonstone
					£40k	£40k					
94	<b>Higham Hill Park:</b> <ul style="list-style-type: none"> <li>Refurbishment of junior play area</li> </ul> Install new gym equipment	Play	Phase 1	2023	£100k	£100k	NA	Neighbourhood Community Infrastructure Levy (NCIL)	LBWF	Play Improvement Programme	Higham Hill
					£60k	£60k					
95	<b>Higham Park:</b> <ul style="list-style-type: none"> <li>Patch repair to paths</li> </ul> Installation of additional seats	Play	Phase 1	2023	£30k	£30k	NA	Neighbourhood Community Infrastructure Levy (NCIL)	LBWF	Play Improvement Programme	Hatch Lane
					£5k	£5k					
96	<b>Jack Cornwell Park:</b> <ul style="list-style-type: none"> <li>Replacement of adventure play equipment</li> </ul> Patch repair to paths	Play	Phase 1	2023	£150k	£150k	NA	Neighbourhood Community Infrastructure Levy (NCIL)	LBWF	Play Improvement Programme	Leyton
					£25k	£25k					
97	<b>Keatly Green:</b> <ul style="list-style-type: none"> <li>Renew safer surfacing</li> <li>Refurbish play area</li> <li>Refurbish ball court</li> </ul> Patch repairs to paths	Play	Phase 1	2023	£40k	£40k	NA	Neighbourhood Community Infrastructure Levy (NCIL)	LBWF	Play Improvement Programme	Valley
					£40k	£40k					
					£20k	£20k					
					£20k	£20k					
98	<b>Kitchener Road Park:</b> <ul style="list-style-type: none"> <li>Replace safer surfacing</li> </ul> Patch repair to paths	Play	Phase 1	2023	£40k	£40k	NA	Neighbourhood Community Infrastructure Levy (NCIL)	LBWF	Play Improvement Programme	Chapel End
					£25k	£25k					
99	<b>Langthorne Park:</b> <ul style="list-style-type: none"> <li>Refurbishment of outdoor gym</li> </ul> Patch repair to paths	Play	Phase 1	2023	£80k	£80k	NA	Neighbourhood Community Infrastructure Levy (NCIL)	LBWF	Play Improvement Programme	Cathall
					£50K	£50K					

100	<b>Leyton Jubilee Park:</b> <ul style="list-style-type: none"> <li>Installation of play equipment for under 5's</li> <li>Improvements to safer surfacing</li> </ul> Replace timber play items	Play	Phase 1	2023	£50k £30k £20k	£50k £30k £20k	NA	Neighbourhood Community Infrastructure Levy (NCIL)	LBWF	Play Improvement Programme	Lea Bridge
101	<b>Leyton Manor Park:</b> <ul style="list-style-type: none"> <li>Refurbishment of adventure play equipment and safer surfacing</li> <li>Refurbishment of ball court surfacing and colour coating</li> </ul> Patch repairs to paths	Play	Phase 1	2023	£80k £40k £20k	£80k £40k £20k	NA	Neighbourhood Community Infrastructure Levy (NCIL)	LBWF	Play Improvement Programme	Lea Bridge
102	<b>Lloyd Park:</b> <ul style="list-style-type: none"> <li>Improvements to skate park</li> <li>Installation of scooter park for young children</li> <li>Refurbishment of play area</li> <li>Refurbishment of fence at Carr Road and Brettenham Road elevation</li> </ul>	Play	Phase 1	2023	£50k £50k £100k £100k	£50k £50k £100k £100k	NA	Neighbourhood Community Infrastructure Levy (NCIL)	LBWF	Play Improvement Programme	Chapel End
103	<b>Mansfield Park:</b> <ul style="list-style-type: none"> <li>Patch repair to paths</li> </ul> Install new seats and picnic tables	Play	Phase 1	2023	tbc	tbc	NA	Neighbourhood Community Infrastructure Levy (NCIL)	LBWF	Play Improvement Programme	Endlebury
104	<b>Memorial Park:</b> <ul style="list-style-type: none"> <li>Refurbishment of tennis courts</li> <li>Refurbishment of toilets</li> <li>Refurbishment of pavilion</li> <li>Resurfacing/patch repair to path</li> <li>New perimeter fencing</li> </ul>	Play	Phase 1	2023	£250k £80k £150k £100k £80k £10k £60k	£250k £80k £150k £100k £80k £10k £60k	NA	Neighbourhood Community Infrastructure Levy (NCIL)	LBWF	Play Improvement Programme	Larkwood

	<ul style="list-style-type: none"> <li>Demolition of garages and making good boundary fencing</li> </ul>										
105	<b>Pimp Hall Park:</b> <ul style="list-style-type: none"> <li>Repair knee rail fencing adjacent to car park</li> <li>Improvements to ball court, install new fencing, re-surfaces, install new goals</li> <li>Install skate park</li> </ul>	Play	Phase 1	2023	£5k £60k £100k	£5k £60k £100k	NA	Neighbourhood Community Infrastructure Levy (NCIL)	LBWF	Play Improvement Programme	Hatch Lane
106	<b>Queens Road Play Area:</b> Resurface path from main entrance into park	Play	Phase 1	2023	£30k	£30k	NA	Neighbourhood Community Infrastructure Levy (NCIL)	LBWF	Play Improvement Programme	Markhouse
107	<b>Ridgeway Park:</b> <ul style="list-style-type: none"> <li>Replace entrance gate with self-closing gate</li> <li>Refurbishment of play areas</li> </ul> Install new way-finding	Play	Phase 1	2023	£3k £200k £8k	£3k £200k £8k	NA	Neighbourhood Community Infrastructure Levy (NCIL)	LBWF	Play Improvement Programme	Endlebury
108	<b>Sidmouth Park:</b> Patch repair to paths	Play	Phase 1	2023	£60k	£60k	NA	Neighbourhood Community Infrastructure Levy (NCIL)	LBWF	Play Improvement Programme	Grove Green
109	<b>St James Park:</b> <ul style="list-style-type: none"> <li>Patch repairs to paths</li> </ul> Installation of outdoor gym equipment	Play	Phase 1	2023	£30k £60k	£30k £60k	NA	Neighbourhood Community Infrastructure Levy (NCIL)	LBWF	Play Improvement Programme	Markhouse
110	<b>Stoneydown Park:</b> Patch repair paths around park and in play area	Play	Phase 1	2023	£4k	£4k	NA	Neighbourhood Community Infrastructure Levy (NCIL)	LBWF	Play Improvement Programme	High Street
111	<b>Thomas Gamuel Park:</b> <ul style="list-style-type: none"> <li>Patch repair to paths</li> </ul>	Play	Phase 1	2023	£7k £4.5k £8k	£7k £4.5k £8k	NA	Neighbourhood Community	LBWF	Play Improvement	Markhouse

	<ul style="list-style-type: none"> <li>Replace wooden edges to play area platforms with recycled plastic logs</li> </ul> <p>Install new seats and picnic tables etc</p>							Infrastructure Levy (NCIL)		Programme	
112	<p><b>Vestry Road Play Area:</b></p> <ul style="list-style-type: none"> <li>Install a second table tennis table</li> <li>Install new drinking fountain to replace the one that was vandalised</li> </ul> <p>Replace 2no. entrance gates with new self-closing gates</p>	Play	Phase 1	2023	£3k £4k £5k	£3k £4k £5k	NA	Neighbourhood Community Infrastructure Levy (NCIL)	LBWF	Play Improvement Programme	Hoe Street
113	<p><b>Vincent Road Play Area:</b></p> <p>Replace hazardous chain-link fence along railway elevation</p>	Play	Phase 1	2023	£40k	£40k	NA	Neighbourhood Community Infrastructure Levy (NCIL)	LBWF	Play Improvement Programme	Hale End & Highams Park
114	<p><b>Wingfield Park:</b></p> <ul style="list-style-type: none"> <li>Replace safer surfacing under junior play equipment</li> <li>Renew surfacing in young children's play area</li> <li>Replace seats around park</li> </ul> <p>Install proper goals in mini ball courts</p>	Play	Phase 1	2023	£80k £40k £15k £5k	£80k £40k £15k £5k	NA	Neighbourhood Community Infrastructure Levy (NCIL)	LBWF	Play Improvement Programme	
115	<p><b>Jubilee Sports ground:</b></p> <p>Yard repairs refurbishment.</p>	Play	Phase 1	2023	£31.5k	£31.5k	NA	Neighbourhood Community Infrastructure Levy (NCIL)	LBWF	Play Improvement Programme	
116	<p><b>Allotments Infrastructure</b> compostable toilets:</p>	Play	Phase 1	2023	£80k	£80k	NA	Neighbourhood Community Infrastructure Levy (NCIL)	LBWF	Play Improvement Programme	All Borough
117	<p><b>Parks Security Programme:</b></p>	Play	Phase 1	2023	£30k	£30k	NA	Neighbourhood Community	LBWF	Play Improvement	All Borough



	Installation of Compostable toilets.							Infrastructure Levy (NCIL)		ent Programme	
118	<b>Additional Gypsy and Traveller Provision:</b> Additional 2 pitches by 2023	Gypsy & Travelling Show people	Phase 1	2023	TBC	TBC	TBC	Developer contributions, GLA	LBWF, GLA	LBWF Gypsy & Traveller Needs Assessment 2020	All Borough
119	<p><b>Chingford Mount Maintenance and Improvement Plan:</b> The Council is also seeking to deliver improvements to the existing site, including:</p> <ul style="list-style-type: none"> <li>• Footpaths replacement/repair program £150,000 (£30,000 per annum) (footpaths are failing due to the incline and geological composition of the cemetery, rolling replacement program would be a program of re-construction and drainage to mitigate path movement)</li> <li>• Fencing and gate works £100,000 renovation of the entrance gates and boundary railings, ongoing replacement of internal railings.</li> <li>• Memorial Garden £100,000 to design and develop new memorial garden for ashes internments .</li> <li>• Materials compound £50,000 (formal storage area for aggregate and soil for burials)</li> </ul>	Burial Capacity	Ongoing	2025	£400,000	£400,000	£400,000	LBWF, Developer Contributions	LBWF	Chingford Mount Maintenance & Improvement Plan	North

120	<b>Borough Crematoria Facility:</b> Aspiration to deliver new crematoria provision to support long term burial needs in the Borough.	Burial Capacity/ Alternative	2025	Phase 1	TBC	TBC	NA	LBWF, Developer Contributions, Prudential Borrowing	LBWF, Commercial Partner	LBWF Resident Services	All Borough
121	<b>Borough Tree Planting Programme:</b> The Council fells approximately 350 trees per year due to damage or on the grounds of safety. In turn, the Council seeks to ensure an ongoing planting programme to deliver a net gain of approximately 500 trees per year. Planting cost £415 per tree at an approximate cost of £350,000 pa Whip/sapling planting would achieve thousands of additional trees but there is limited space so, whilst more expensive, standard trees are preferred.	Trees	Ongoing	2020-2035	£350,000 p.a.	NA	NA	LBWF, Developer Contributions, Grant funding, multi- functional delivery i.e as part of other infrastructure projects	LBWF	LBWF Resident Services	All Borough
122	<b>Air quality monitoring inc automatic stations</b>	Air quality	Ongoing	2021/22	35000	s106 Air Quality and other match funding sources, if available	NA	Developer contributions (S.106)	LBWF Air Quality Officer/Team	AQAP and S106 Forward Spending Plan	All Borough
123	<b>Air quality monitoring inc automatic stations</b>	Air quality	Ongoing	2022/23	35000	s106 Air Quality and other match funding sources, if available	NA	Developer contributions (S.106)	LBWF Air Quality Officer/Team	AQAP and S106 Forward Spending Plan	All Borough
124	<b>Air quality monitoring inc automatic stations</b>	Air quality	Ongoing	2023/24	35000	s106 Air Quality and other match funding sources, if available	NA	Developer contributions (S.106)	LBWF Air Quality Officer/Team	AQAP and S106 Forward Spending Plan	All Borough

125	<b>School green screen project</b>	Air quality	Ongoing	2021/22	30000	s106 Air Quality and other match funding sources, if available	NA	Developer contributions (S.106)	LBWF Air Quality Officer/Team	AQAP and S106 Forward Spending Plan	TBC
126	<b>School green screen project</b>	Air quality	Ongoing	2022/23	30000	s106 Air Quality and other match funding sources, if available	NA	Developer contributions (S.106)	LBWF Air Quality Officer/Team	AQAP and S106 Forward Spending Plan	TBC
127	<b>Emission reduction projects</b>	Air quality	Ongoing	2021/22	20000	s106 Air Quality and other match funding sources, if available	NA	Developer contributions (S.106)	LBWF Air Quality Officer/Team	AQAP and S106 Forward Spending Plan	All Borough
128	<b>Emission reduction projects</b>	Air quality	Ongoing	2022/23	20000	s106 Air Quality and other match funding sources, if available	NA	Developer contributions (S.106)	LBWF Air Quality Officer/Team	AQAP and S106 Forward Spending Plan	All Borough
129	<b>Emission reduction projects</b>	Air quality	Ongoing	2023/24	20000	s106 Air Quality and other match funding sources, if available	NA	Developer contributions (S.106)	LBWF Air Quality Officer/Team	AQAP and S106 Forward Spending Plan	All Borough
130	<b>Chestnut Showground Critical Drainage Area (CDA)</b> A flood mitigation scheme has been designed for Chestnut Showground and there is an opportunity for this to be coordinated and integrated into the Campus Redevelopment SuDS Drainage and Attenuation proposals, providing	Flood Risk & Water Management	Critical	June 2021 – September 2024.	£250k  (Flood mitigation element only, excluding	£135k	£115k	Thames RFCC Thames21 LBWF  Developer Contributions	LBWF  Thames RFCC	Thames RFCC  LLFA	Central

	enhanced amenity, environmental and biodiversity benefits for the site.				Campus SuDS scheme and Attenuation requirements).						
131	<p><b>Fillebrook Critical Drainage Area (CDA)</b> Fillebrook: Temporary flood alleviation basin (only wet during rainfall events) within Whipps Cross Hospital, combined with new and existing flood walls. Flood storage within eastern field of Leyton Sixth Form College.</p> <p>Linear bioretention garden along public footway adjacent to St Mary C of E Primary School. Brooke Road also has potential for modular storage tanks to be provided under footway/school land.</p>	Flood Risk & Water Management	Critical	2022-2026.	£1,009,000	£822,386	£400,307	Thames RFCC Thames21 LBWF LLFA Developer Contributions	LBWF Barts NHS Trust & Housing Developer Partner Thames RFCC & EA	Thames RFCC LLFA EA	Central
		Flood Risk & Water Management		2023-2024	£475k-£675k	None  (Potential Highways, LLFA & TWA funding)	£475k-£675k	LBWF LLFA Thames Water	LBWF  LLFA Highways	LLFA	
132	<p><b>South Chingford Critical Drainage Area (CDA)</b> Potential rainwater pipe disconnection schemes at Mandeville Court, Maple Avenue and Rolls Court. Potential flood storage schemes at Memorial Park, Larkwood Playing Fields and Rolls Sports ground.</p>	Flood Risk & Water Management	Critical	Sept 2021-Oct 2023	£987,289	£942,289	£45k	Thames RFCC LLFA LBWF  Developer Contributions	LBWF Thames RFCC  LLFA EA	Thames RFCC LLFA EA	North
133	<p><b>Waltham Forest North East (Ching Corridor) - Critical Drainage Area (CDA)</b></p>	Flood Risk & Water Management	Critical	April 2021 – March 2026	£839,500	£826,500	£13k	Thames RFCC LBWF	LBWF EA	Thames RFCC LLFA	North

	Flood Study to identify potential flood mitigation opportunity sites to mitigate ongoing surface flooding problems within the CDA and to mitigate for future proposed development sites outlined within the new Local Plan.							Developer Contributions S106	Thames RFCC LLFA	EA LBWF	
134	<b>Waltham Forest North West (Sewardstone Corridor) - Critical Drainage Area (CDA)</b> Flood Study to identify potential flood mitigation opportunity sites to mitigate ongoing surface flooding problems within the CDA and to mitigate for future proposed development sites outlined within the new Local Plan.	Flood Risk & Water Management	Critical	April 2021 – March 2026	£1,085,000	£562,227	£522,773	Thames RFCC LBWF Developer Contributions S106	LBWF Thames RFCC LLFA EA	Thames RFCC LBWF LLFA EA	North
135	<b>Waltham Forest South (Leytonstone Corridor) - Critical Drainage Area (CDA)</b> Flood Study to identify potential flood mitigation opportunity sites to mitigate ongoing surface flooding problems within the CDA and to mitigate for future proposed development sites outlined within the new Local Plan.	Flood Risk & Water Management	Critical	April 2021 – March 2025	£440,000	£429,000	£11,000	Thames RFCC LBWF Developer Contributions S106	LBWF Thames RFCC LLFA EA	Thames RFCC LBWF LLFA EA	South
136	<b>Waltham Forest West (Walthamstow Marshes) - Critical Drainage Area (CDA)</b> Flood Study to identify potential flood mitigation opportunity sites to mitigate ongoing surface flooding problems within the CDA and to mitigate for future proposed development sites outlined within the new Local Plan.	Flood Risk & Water Management	Critical	April 2021 – March 2026	£1,978,000	£1,206,290	£771,710	Thames RFCC LBWF Developer Contributions S106	LBWF Thames RFCC LLFA EA	Thames RFCC LBWF LLFA EA	Central

137	<p><b>Walthamstow Wetlands:</b> Walthamstow Wetlands are an increasingly important asset and open space for Waltham Forest, and on-going investment is required to ensure the site is well maintained, as a nature reserve and visit attraction and to meet social and environmental objectives.</p> <p>The on-going revenue costs to manage and maintain the Walthamstow Wetland are forecast to be £5.54 million over the next twenty years. Given the new and agreed new homes in the environs of the Wetlands, developers' contributions will be sought to cover the ongoing costs of the asset to support the delivery of liveable places.</p>	Green & Blue Infrastructure	Ongoing	2040	£5.45m	-	£5.45m	<p>LBWF</p> <p>Developer Contributions</p> <p>Stakeholder Support</p> <p>Partnership Funding Opportunities</p>	<p>LBWF</p> <p>Thames Water</p> <p>London Borough of Haringey</p>	LBWF	All Borough
138	<p><b>Meridian Water Link</b></p> <ul style="list-style-type: none"> <li>• Provision of a safe pedestrian and cycle route as an alternative to the north circular; linking the Mini-Holland network (Leyton to Chingford Cycle Route) to the Lee Valley Walk at the River Lea. To include tree planting, signage and improvements to streetscape/highway and sense of safety at Folly Lane. Improved access to the pedestrian footbridge from Greenham Crescent north of the A406.</li> </ul> <p>Improvements to Folly Lane Community Woodland including vegetation</p>	Green & Blue	2020-2035	Ongoing	£2 million	TBC	TBC	<p>Developer contributions, external funding opportunities, LBWF</p>	<p>London Borough of Enfield</p> <p>Environment Agency</p> <p>Transport for London</p> <p>Thames Water</p>	Waltham Forest Green & Blue Infrastructure Study 2020	North/Central



	management, habitat works, seating and boundary treatments to improve sense of security. Connect Folly Lane with the existing footbridge over the A406 through provision of a surfaced route through Folly Lane Community Woodland. Subject to scoping, implement a SuDS scheme to reduce surface water run-off from the A406 adjacent to the road and within Folly Lane Community Woodland to improve water quality in surrounding waterbodies. Seek opportunities to naturalise heavily modified sections of the River Ching and improve management of marginal river habitat.										
139	<p><b>Connecting Leyton's Sports Hubs</b></p> <ul style="list-style-type: none"> <li>• Provide walking and cycling routes through the provision of signage and streetscape improvements between local open spaces including Leyton Cricket Ground, Jack Cornwell Park, Leyton Manor Park and Abbots Park. Provide a cycling and walking route between Leyton Cricket Ground and grass sports pitches at Hackney Marshes via Marsh Lane and Leyton Jubilee Park.</li> <li>• Make improvements for transporting bicycles across the existing pedestrian footbridge over the railway sidings at Orient Way.</li> </ul>	Green & Blue	2020-2035	Ongoing	£2.5 million	TBC	TBC	Developer contributions, external funding opportunities, LBWF	Transport for London London Borough of Hackney Lee Valley Regional Park Authority National Rail	Waltham Forest Green & Blue Infrastructure Study 2020	South

	<ul style="list-style-type: none"> <li>• Make improvements for cyclists along the Mini-Holland network at High Street Leyton, better connecting Leyton Cricket Ground, local open spaces, transport hubs, Leyton Sports Centre and Baker's Arms District Centre. Identify suitable sites and implement urban greening measures including tree planting and SuDS along cycling and walking routes and towards the District Centre at Bakers Arms.</li> </ul>										
140	<p><b>The Highams Park: heritage, open space and biodiversity improvements:</b></p> <ul style="list-style-type: none"> <li>• Work with stakeholders to develop a management strategy and improvement programme for the remnants of the historic landscape. Such a strategy should have regard for City of London's Individual Site Plan for The Highams Park, Little Sale Wood and Oak Hill Wood. Develop the non-SAC section of the site as a key alternative recreational space to protect important ecological features of the SAC.</li> <li>• Appropriate tree planting, wildflower seeding within park.</li> <li>• Improvements to the quality of permissive paths and public rights of way, linking to Epping Forest Centenary Walk. Improve the connection to White House Woods providing signage and road crossing improvements at The Charter Road.</li> </ul>	Green & Blue	2020-2035	Ongoing	£750,000	TBC	TBC	Developer contributions, external funding opportunities, LBWF	City of London Corporation Highams Park Community Interest Company	Waltham Forest Green & Blue Infrastructure Study 2020	North

	<ul style="list-style-type: none"> <li>Entrance improvements to include directional signage from nearby bus stops on The Avenue to the north. Improve the Keynsham Avenue/Tamworth Avenue entrances to improve sense of safety, provision of signage. Wildlife friendly planting/wildflower planting at entrances. Liaise with City of London to determine the suitability of improving pedestrian access at the A1009.</li> <li>Liaise with Redbridge Borough Council over the feasibility of creating a promoted heritage cycle/walking route between The Highams Park and Claybury Park (both Humphry Repton parkland commissions) via Roding Valley Park to divert some users away from Epping Forest SAC</li> </ul>										
141	<p><b>Protecting and enhancing Woodford New Road green corridor:</b></p> <ul style="list-style-type: none"> <li>Provision of segregated cycle lanes, connecting recent improvements at Whipps Cross Interchange to Woodford Green on the borough boundary. Junction improvements and traffic calming measures to promote a modal shift and improve air quality. Tree planting, wildflower seeding where possible and appropriate to create improved wildlife corridor.</li> </ul>	Green & Blue	2020-2035	Ongoing	£8 million	TBC	TBC	Developer contributions, external funding opportunities, LBWF	Natural England TFL City of London Corporation	Waltham Forest Green & Blue Infrastructure Study 2020	Central

	<ul style="list-style-type: none"> <li>•Connect the route with the existing Mini-Holland scheme (Lea Bridge Road Cycle Route, Bloomsbury to Walthamstow Quietway and Forest Road to Wood Street).</li> <li>•Improved habitat management at White House Woods.</li> </ul>										
142	<p><b>River Ching and South Chingford wetlands: flood alleviation, water quality and biodiversity:</b></p> <ul style="list-style-type: none"> <li>•Implement a catchment-based approach to providing flood alleviation, improving water quality and reducing polluted water runoff through constructed wetlands in open spaces. The council has identified Memorial Park, Larkswood Playing Field and Rolls Sports Ground as key sites for flood alleviation schemes in South Chingford to protect properties from flooding events. Proposed schemes present significant opportunities to provide improved amenity and biodiversity benefits. Several other sites have been identified by partners, such as Thames 21, with potential for wetland construction and SuDS that would contribute to improved water quality within the River Ching.</li> </ul>	Green & Blue	2020-2035	Ongoing	£1.5 million	TBC	TBC	Developer contributions, external funding opportunities, LBWF	Several properties in South Chingford are at risk from surface water flooding.  The River Ching suffers from poor water quality, which has been partly attributed to runoff from adjacent roads, such as the A406.  Waltham Forest Open Space Study	Waltham Forest Green & Blue Infrastructure Study 2020	North

									Strategy Action 28.		
143	<p><b>River Ching Local Blue Ribbon: Gateways and interpretation:</b></p> <ul style="list-style-type: none"> <li>• Provision of 'Gateways' to the river including interpretation at several locations and signposting to these entrances (Gateway locations to be considered at Whitehall Plain / Whitehall Road, A112 and Morrisons car park).</li> <li>• Improvements to any path surfacing running nearby the river's edge, where required.</li> <li>• Vegetation management and rivers edge improvements where possible and appropriate.</li> </ul>	Green & Blue	2020-2035	Ongoing	£1.5 million	TBC	TBC	Developer contributions, external funding opportunities, LBWF	Thames 21 Environment Agency City of London Corporation Ching Brook Action Group	Waltham Forest Green & Blue Infrastructure Study 2020	North/Central
144	<p><b>Low Hall: access, interpretation &amp; biodiversity improvements:</b></p> <ul style="list-style-type: none"> <li>• Ensure configuration of future development at the Low Hall Depot allows for pedestrian/cycle access along the Dagenham Brook. Built development shall be set back from the river's edge to allow for regrading/reprofiling and improved habitat quality. Design should incorporate additional open space, high quality play and retention and improvement of multifunctional flood storage area as a community amenity.</li> </ul>	Green & Blue	2020-2035	Ongoing	£750,000	TBC	TBC	Developer contributions, external funding opportunities, LBWF	Environment Agency Conservation organisations Local interest groups Thames 21 Thames Water	Waltham Forest Green & Blue Infrastructure Study 2020	Central/South

	<ul style="list-style-type: none"> <li>•Creation of a new entrance adjacent to the Brook on South Access Road at Low Hall conservation area, creating a continuous path along the brook. Entrance/boundary treatments, entrance surfacing, signage/interpretation. Creation of a route parallel to the brook connecting to the existing woodland walk at the west of the site.</li> <li>•Develop and promote St James Park, Low Hall Conservation Area and Low Hall Sports Ground as a single site with consistent signage and improved access between the north and south.</li> <li>•Extend habitat areas adjacent to SLINC, north of the Sports Fields to include reprofiling rivers edge/swale creation, tree/scrub and wildflower planting for pollinators.</li> <li>•Provision of community food growing area/orchard within St James Park.</li> <li>•Create a route with directional signage linking the cycle filter at South Access Road/Argall Avenue with the rain garden at Essex Road/Salop Road. Provision of directional signage from public transport links and the Mini Holland Network (Leyton).</li> </ul>										
145	<p><b>Sewardstone Gateway to the Countryside:</b></p> <ul style="list-style-type: none"> <li>• Connect Sewardstone Rd/Kings Head Hill/Lea Valley Rd junction with the</li> </ul>	Green & Blue	2020-2035	Ongoing	£3 million	TBC	TBC	Developer contributions, external funding	Transport for London Lee Valley Regional	Waltham Forest Green & Blue Infrastruct	North



	<p>Mini-Holland Network (Leyton to Chingford Cycle Route) at the A110/A1069 junction – linking with routes such as the London Loop, Epping Forest Centenary Walk and the footpath along the River Lee navigation. Markings, signage and junction improvements.</p> <ul style="list-style-type: none"> <li>• Improve character, legibility and environmental quality of Sewardstone Rd/Kings Head Hill/Lea Valley Rd junction. Increase tree cover, provision of wildlife friendly planting and seating away from the roadside. Provide visitor information/map board showing recreational routes/open spaces/transport hubs.</li> <li>• Provide better access to Sewardstone Paddock and access into the Lee Valley. Raised table/pedestrian crossing nearby Hawkwood Crescent. Street tree planting adjacent to Sewardstone Road north of King Hill Junction.</li> <li>• Provide better legibility from the gateway area to Mansfield Park with provision of signage and increased street trees.</li> </ul> <p>Improvement programme at Mansfield Park, including entrance improvements at Mansfield Hill and Valley Side.</p>							<p>opportunities, LBWF</p>	<p>Park Authority  London Borough of Enfield</p>	<p>ure Study 2020</p>	
--	---	--	--	--	--	--	--	----------------------------	--	-----------------------	--

146	<p><b>North Chingford Gateway to the Forest:</b></p> <ul style="list-style-type: none"> <li>• Improve the character of the area around Chingford station with highway/streetscape improvements with seating, cycle parking and signage. Increase street tree cover and planting.</li> <li>• Intermittent / light segregation for cyclists along Station Road between Chingford Station and Chingford Plain. Traffic calming measures along ranger's road and provision of crossing points for cyclists and pedestrians to access visitor centre and other facilities.</li> <li>• Signage/board map and interpretation at Chingford Station indicating location and routes to other open spaces such as Pimp Hall Park and Nature Reserve.</li> <li>• Engagement with cycle hire outlet at Chingford Hub and City of London to identify opportunities help promote active recreation and sustainable travel from this location.</li> </ul>	Green & Blue	2020-2035	Ongoing	£1 million	TBC	TBC	Developer contributions, external funding opportunities, LBWF	<p>Transport for London</p> <p>City of London Corporation</p> <p>Parks Friends Groups, e.g. Pimp Hall.</p>	<p>Waltham Forest Green &amp; Blue Infrastructure Study 2020</p>	North
147	<p><b>Whipps Cross development:</b></p> <ul style="list-style-type: none"> <li>• Ensure layout/configuration of the development protects an area along the south/west boundary along Peterborough Road to accommodate flood storage/mitigation. Design of</li> </ul>	Green & Blue	2020-2035	Ongoing	£2 million	TBC	TBC	Developer contributions, external funding opportunities, LBWF	<p>NHS</p> <p>Natural England</p> <p>Environment Agency</p>	<p>Waltham Forest Green &amp; Blue Infrastructure Study 2020</p>	Central

<p>flood storage/mitigation to ensure maximum benefit for biodiversity and access for recreation for health and wellbeing. Continue engagement with Leyton Sixth Form College to scope out feasibility of delivering a complementary scheme that also provides educational benefits. Ensure appropriate consideration of the drainage hierarchy as part of site design and ensure appropriate incorporation of green roofs, walls, permeable features and other urban greening.</p> <ul style="list-style-type: none"><li>• Retain and enhance woodland areas on site and woodland to the east to provide alternative open space provision for some users of Epping Forest. To include entrance improvements, branding, access improvements, bins/benches.</li><li>• Improve the south side of Whipps Cross Road for pedestrians and cycling. Improve road safety and provide crossings at the northern and eastern boundary along Whipps Cross Road and James Lane to facilitate access to surrounding open space/woodland.</li><li>• Ensure an appropriate wayfinding strategy is included as part of site proposals to ensure good connectivity/legibility for all users to local amenities and local links for sustainable travel (eg Wood St for</li></ul>										
---	--	--	--	--	--	--	--	--	--	--

	<p>Wood Street Station, Mini-Holland Network at High Street Leyton). Develop marked cycleway to accessible footbridge at A12 to promote sustainable travel to Leytonstone Station via Colworth Road. Environmental enhancements to bridge crossing at east side of A12 to include tree planting.</p>										
148	<p><b>Urban greening opportunities along A12:</b></p> <ul style="list-style-type: none"> <li>Identify opportunities for urban greening through commissioning a detailed GI study; street tree and ornamental planting across the southern wards will help combat deficiency in green space, reduce air pollution and encourage sustainable transport. Particular opportunities include: a green link along Cann Hall Road / Crownfield Road to link the Olympic Park and Wanstead Heath; introducing traffic calming measures such as modal filters/ greening at existing modal filters.</li> <li>Support local community groups to undertake community-led de-paving projects.</li> </ul> <p>Create a segregated cycle lane between Leytonstone High Road and Maryland station in the south.</p>	Green & Blue	2020-2035	Ongoing	£2.5 million	TBC	TBC	Developer contributions, external funding opportunities, LBWF	London Borough of Newham Community groups Transport for London Groundwork Greater London Authority	Waltham Forest Green & Blue Infrastructure Study 2020	South

