

**Best Start
in Life**



Early Years Implementation Plan for Children under 5 with Learning and Developmental Delay

Sep 2022 – July 2025

(to align with CFC & Section 75 SaLT contracts)



Background

Waltham Forest's Vision for Children and Young People with Special Educational Needs and Disabilities aged 0 – 25 outlines eight key outcomes with an overarching vision. The EYCBD Service are dedicated to achieving this vision by June 2022.

The commitment to delivering these outcomes has resulted in the development of an **Early Years Implementation Plan for Children under 5 with Learning and Developmental Delay.**

This plan aligns recommendations and outcomes of the following strategies (Appendix 1):

- [WF SEND Vision 2020 - 2023](#)
- [Early Years and Childcare Strategy 2019 -2022](#)
- [Life Chances Commission 2018](#)
- [SEND 0-5 Review 2020](#)
- [Healthy Child Programme 2009 - Present](#)

And adheres to the:

- [SEND Code of Practice 2014](#)
- [EYFS Statutory Framework 2017](#)

[The Healthy Child Programme \(HCP\)- Pregnancy and the first five years of life](#), which is delivered by Heath Visitors plays a key role in improving the health and wellbeing of children, as part of an integrated approach to supporting children and families.

Our vision in Waltham Forest is that all parent/carers engage in the HCP, as it offers every family a programme of screening tests, immunisations, developmental reviews, and information and guidance to support parenting and healthy choices – all services that children and families need to receive if they are to achieve their optimum health and wellbeing. The HCP is also the main source of support for parents/carers and their children where a child may have or has learning and developmental (L&D) delay. All parents/carers and professionals working with under 5's who have a concern about a child's development should contact the Health Visiting service in order to access the relevant support available as part of the HCP.

As part of the HCP programme, the Health Visiting Service are required to work in partnership with different agencies on local service development across three pathways/levels of support, [universal, universal partnership and universal plus partnership](#). Within these pathways there are specific requirements for the Health Visiting Service to work in partnership with Children and Family Centres (CFC) around early childhood development and the [Early Years Foundation Stage](#) (EYFS).

The SEND code of practice states: CCGs, NHS Trusts and NHS Foundation Trusts must inform the appropriate local authority if they identify a child under compulsory school age as having, or probably having, SEN or a disability under [Section 23 of the Children and Families Act 2014](#). The Health Visiting Service, along with other health professionals would therefore inform the local authority of any children with suspected or known L&D delay in order to ensure that a holistic package of support was offered to the child and their family in a multi-agency/integrated way as part of the HCP programme.

The LA's Early Years Childcare and Business Development (EYCBD) Service will work closely with the Health Visiting Service to define, develop and deliver the early childhood development and EYFS elements of the LA's CFC offer for children referred by them with L&D delay and ensure that this complements, support and enhances the HCP offer.

The definition of children identified with L&D delay, as outlined in the [SEND Code of Practice](#) is a child who 'has a significantly greater difficulty in learning than the majority of others of the same age, or has a disability which prevents or hinders him or her from making use of facilities of a kind generally provided for others of the same age.'



"Children and young people with special educational needs or disabilities (SEND) will achieve well in early years, at school, at college and lead happy and fulfilled lives."

WF SEND Vision 20/23

Local Authorities have a [statutory duty](#) to provide a range of early childhood services which are delivered as part of the **Waltham Forest Children and Family Centre (CFC) Service offer**.

In Waltham Forest Children and family Centre Services are delivered as part of a Best Start in Life (BSIL) offer.

BSIL services comprise of a core offer comprise of council delivered and commissioned/funded services across the following services/organisations that deliver the Children and Family Centre offer, Early Help, Early Years and Childcare, Public Health, NELFT, Tower Hamlets Clinical Group (Health Visiting Services), The Lloyd Park Children's Charity, HENRY (Healthy Eating and Nutrition for the Really Young), Citizens Advice and the Adult Learning Service. To compliment and widen this offer Libraries, Parks and Greenspace, Sports & Leisure, Culture and Museums also deliver a range of services for under 5's and their families. We also have a Section75 agreement with NELFT for universal and specialist SaLT services.

In addition, there are a number of other private and charitable organisations and individuals operating services to families across the Borough which the CFC may signpost parents/carers to. These services can be accessed in addition to those offered by CFC's.

The six areas supported via [Children and Family Centres](#) are:

- Children's Learning and Development
- Health
- Childcare and Free Early Education
- Family Support
- Information and Advice
- Employment and Training Support

This plan focusses on the work that the LA's EYCBD Team would lead on in relation to:

- **the Children's Learning and Development element of CFC services in relation to meeting the LA's responsibilities with regards to supporting the needs of children under 5 with suspected or known L&D delay**
- **Meeting the LA's statutory duty Securing information advice and training for early years providers in the borough with regards to meeting the needs of children with special educational needs and disabilities, vulnerable and disadvantaged children**

This will be done using a multi-agency and co-production approach, working alongside other Health and CFC service delivery partners as well as parents/carers and a range of other internal and external partners/agencies in line with multi-agency/integrated approaches set out in the:

- HCP requirements
- EYFS
- the early years element of the [SEND Code of Practice](#) ,
- [Early education and childcare Statutory guidance for local authorities on the provision of early education and childcare](#) and
- [Children's Centre Statutory Guidance](#).
- [Family Hubs and Start for Life Guidance](#)

Examples of how this multi-agency approach will be implemented in practice are set out in Appendix 3 and Appendix 6.

Delivery Plan

Children that will be supported by the EYCBD as part of this plan will generally fall into one of the following categories:



1. Children under 5 years old who attend a school nursery or Ofsted registered full daycare, preschool or childminder (Early Years settings)
2. Children under 5 who do not attend an Early Years settings (who we would encourage to engage in CFC services)

A key element of this work includes leading on the development and implementation of L&D delay pathways for children under 5 referred to the LA/CFC who have been identified with L&D delay which outline the interventions and levels of support that children and their families will be offered, and ensuring parity between children in settings and not in settings as part of a multi-agency offer. These pathways will be developed to align with the principles of the [Thresholds and practice for working with children and families](#) document. Appendix 5 sets out the draft levels of support which will be developed with partners to ensure consistency and shared understanding of language around levels and tiers, this will also require further discussion and agreement around how these pathways will integrate with or run alongside existing pathways and triage processes such as the 2-year-old partnership pathway and NELFT multi-disciplinary panel.

There will be a particular focus on social, communication and language. An indicative Learning Journey for under 5's with Learning and Development Delay is set out at Appendix 2.

The EYCBD Service will lead on delivery of this plan in relation to children who are identified as having, or who may have **Learning and Developmental delay** that are:

- referred to the LA via the Children and Family Centre Single Point of Access (Appendix 3)
- registered with the CFC Service and not attending a school nursery class or Ofsted registered childcare provision in Waltham Forest
- attending a school nursery class or Ofsted registered childcare provision in Waltham Forest

The LA's Learning and System Support Service (which the SEND and EYCBD service form part of) will lead on commissioning LA funded learning and development support services for children with L&D delay/SEND and will also work in partnership with the CCG to jointly commission these services.

To achieve the implementation plan effectively, five **Early Years Learning and Developmental Delay Commitments** have been developed dedicated to achieving these strategies specifically for children and families in Early Years:

1	Clear and accessible Early Years L&D delay information and services for parents, carers and professionals.
2	Children and their families are supported by joined up services through their Early Years.
3	Parents and Carers are empowered to make informed decisions for their child with L&D delay and family.
4	Early Years provisions and services are high-quality, inclusive, and safe for children with L&D delay.
5	Community resources and groups for Early Years children with L&D Delay are utilised and celebrated.

These commitments will be delivered through the continuation of collaborative work already established in Early Years by forming an **0-5 Early Years L&D Delay Strategic Group**. This group will include representation from families of children with L&D Delay as well as EY sector partners in order to capture all voices, agree goals and outcomes and support leads to achieve effective results.

The **0-5 Early Years L&D Delay Strategic Group** will provide a **Quarterly Review Report** evaluating the implementation plan which will be communicated to strategic bodies (Appendix 4), partners and families in Waltham Forest.



Commitments

Clear and accessible Early Years L&D delay information and services for parents, carers and professionals.	Children and their families are supported by joined up services through their Early Years.	Parents and Carers are empowered to make informed decisions for their child with L&D delay and family.	Early Years provisions and services are high-quality, inclusive and safe for children with L&D delay.	Community resources and groups for Early Years children with L&D Delay are utilised and celebrated.
Informative EYs section on the Local Offer	A single point of referral for early identification of EYs children with L&D Delay	Services that meet family's individual needs.	Upskilled Waltham Forest's EYs workforce	Effective partnerships across charities and community groups offering EYs L&D delay support
Informative EYs L&D delay section on The Hub	A shared process for tracking and monitoring children's levels of L&D and joint planning across all Early Years services	Parent/carers and children voices are embedded into service design.	EYs L&D delay support across the borough meets demand.	Celebrated experiences of EYs L&D delay across the borough.
Enhanced knowledge of EYs L&D delay for all professionals working with families	Effective transition processes and procedures across all services	Parents/cares have knowledge and skills regarding their child's learning, development and wellbeing	A graduated approach to targeted and specialist EYs L&D delay support.	An established 0-5 Early Years L&D delay Strategic Group.
A collaborative ethos regarding EYs L&D delay support	ICT system and data sharing arrangements that support co-production and multi-agency working between EYs services	Parents/carers feel supported and help each other to manage their own well-being and understanding of their child's individual needs.	EYs professionals share expertise across the borough through sector leadership	EYs L&D delay links are embedded with the Connecting Communities programme

Delivering our commitments

What are our Five Early Years L&D delay Commitments?	What are we going to do to deliver this commitment?	How will we know this commitment is being delivered effectively?	Which partners and services will work together to deliver this commitment?
<p>Clear and accessible Early Years L&D delay information and services for parents, carers and professionals.</p>	<ul style="list-style-type: none"> • We will update the EYs section of the Local Offer to include current information about learning and development, health and care services. • We will continue to regularly update EYs L&D delay section on the Hub website for Waltham Forest early years providers which will include current information about learning and development, health and care services. • We will work in partnership with a range of colleagues working with early years children to enhance the knowledge of all professionals working with families regarding EYs L&D delay services and how families can access them. • We will work in partnership with a range of colleagues working with early years children to develop a collaborative ethos regarding EYs L&D delay across Waltham Forest including digital communications such as newsletters, social media pages and websites. 	<ul style="list-style-type: none"> • Informative EYs section on the Local Offer • Informative EYs L&D delay section on The Hub • Enhanced knowledge of EYs L&D delay for all professionals working with families • A collaborative ethos regarding EYs L&D delay support 	<p>Lead: Early Years and Childcare Team In partnership with:</p> <ul style="list-style-type: none"> - CFC Services - SEND Service - Early Help Service - NELFT Universal and Targeted Health Services - Parent/Carers - EY Provisions - Community Representatives
<p>Children and their families are supported by joined up services through their Early Years.</p>	<ul style="list-style-type: none"> • We will lead on the development and implementation of a single point of referral process for children under 5 referred to the LA/CFC who have been identified with L&D delay, including statutory section 23 referrals from health professionals (Appendix 3). • We will develop a shared process for children under 5 referred to the LA/CFC who have been identified with L&D delay which will include multi-agency planning, tracking and monitoring of children's levels of L&D and joint planning across a range of colleagues working with early years children. • We will create transition processes and procedures across all services working with EYs children with L&D delay. From home to EY Provision to school including uptake of FEEE and accessing SENIF, EHCPs and equipment. 	<ul style="list-style-type: none"> • A single point of referral with clear criteria and processes for early identification of EYs children with L&D delay • A shared multi-agency process for tracking and monitoring children's levels of L&D and Early Years Support plan across all services • Effective transition processes and procedures across all services • ICT system and data sharing arrangements in place for EYs professionals. This will assist with monitoring and gathering evidence 	<p>Lead: Early Years and Childcare Team In partnership with:</p> <ul style="list-style-type: none"> - CFC Services - SEND Service - Early Help Service - NELFT Universal and Targeted Health Services - Parent/Carers - EY Provisions - Community Representatives

	<ul style="list-style-type: none"> • We will have ICT system and data sharing arrangements in place that support co-production and multi-agency working between EYs services. • We lead on the development and implementation of clear L&D delay case review and recording procedures and processes in relation to children referred to the LA/CFC service who have been identified with L&D delay to ensure everyone understand theirs and everyone else's role, and how they will work together to support a child or family and share information that will support other professionals planning. • We will lead on the development of clear L&D delay case closure, step up or handover procedures in relation to children referred to the LA/CFC service who have been identified with L&D delay to ensure that parents, carers and practitioners are clear about next steps and expected outcomes and support next step in pathway as appropriate. 	<p>regarding packages of support to assist all professional in making informed decisions for next steps and onward referrals.</p> <ul style="list-style-type: none"> • Case notes re clear, concise and support holistic multi-agency support planning and required outcomes and reviews are completed in line with pathways/statutory requirements • parents, carers and practitioners are clear about next steps and expected outcomes and support next step in pathway as appropriate. When a case is closed, stepped up or handed over to another professional. 	
<p>Parents and Carers are empowered to make informed decisions for their child with L&D delay and family.</p>	<ul style="list-style-type: none"> • We will offer parents/carers services delivered through a range of methods which suit their individual needs • We will capture parent/carers and children's voices and ensure these are embedded in service planning, delivery and evaluation • We will enable parents/carers to access information and support to develop their skills and knowledge regarding their child's individual learning, development and wellbeing. • We will ensure parents/carers are supported to help each other to manage their well-being and understanding of their child's needs. • We commit to offering informed decision making processes, and recognise that parents may not choose all support packages available/offered to them. 	<ul style="list-style-type: none"> • Services suit family's individual needs. • Parent/carers and children voices are embedded into service design. • Parents/cares have knowledge and skills regarding their child's learning, development and wellbeing • Parents/carers feel supported and help each other to manage own well-being and understanding of their child's individual needs. 	<p>Lead: Early Years and Childcare Team In partnership with:</p> <ul style="list-style-type: none"> - CFC Services - SEND Service - Early Help Service - NELFT Universal and Targeted Health Services - Parent/Carers - EY Provisions - Community Representatives

Early Years provisions and services are high-quality, inclusive and safe for children with L&D delay.

- A range of colleagues working with early years children will continue to be upskilled workforce by providing access to support, advice and training opportunities.
- We will regularly review and adapt Early Years services and commissioning arrangements to ensure the support offered meets the ongoing demand for EY L&D delay support. A key element of this work includes leading on the development and implementation of L&D delay pathways which outline the interventions and levels of support that children and their families will be offered and aligning this for children in settings and not in settings as part of a multi-agency offer. There will be a particular focus on children's social and communication and language development.
- We will develop and deliver a graduated approach through a range of methods through timely, inclusive targeted and specialist support.
- We will continue to promote an inclusive ethos and facilitate a systems leadership approach for professionals and EYs provisions to support each other and share expertise across the borough.
- We will lead on the development and implementation of robust quality assurance processes relating to children referred to the LA/CFC service with L&D delay as part of a multi-agency CFC quality assurance process across Early Help and Health in order to maintain high quality service delivery, share good practice and inform service improvement plans. Process will be developed, with support from LA strategic partnership team.
- We will work with professionals working with early years children to promote an inclusive communities of practice enabling leaders and frontline staff to support each other and share expertise across the borough.

- Professionals working with early years children across Waltham Forest are upskilled.
- EYs L&D delay Support provided across the borough meets demand.
- A graduated approach to targeted and specialist EYs L&D delay support.
- EY L&D delay professionals share expertise across the borough through sector leadership
- Robust quality assurance processes are in place to ensure that required processes and procedures are delivered and that consistently high levels of support are delivered which deliver the required outcomes for children and their families and inform service planning.
- Multi-agency quality assurance process in place across EYCBD, Early Help and Health that incorporates:
 1. Operational monitoring of delivery of pathways/interventions
 2. Quality supervision
 3. Contract monitoring
 4. Feedback from parents/carers
 5. Feedback from stakeholders
 6. Feedback from Staff
- Qualitative and quantitative evaluation processes (random samples, case studies, performance data, national perspectives-research

Lead:
Early Years and
Childcare Team
**In partnership
with:**
- CFC Services
- SEND Service
- Early Help Service
- NELFT Universal
and Targeted Health
Services
- Parent/Carers
- EY Provisions
- Community
Representatives

Community resources and groups for Early Years children with L&D Delay are utilised and celebrated.

- We will make links and partnerships with charities, community groups and others who are already delivering EY L&D delay support in Waltham Forest.
- We will recognise and celebrate the experiences of Waltham Forest families, EY provisions and services across the borough.
- We will create an 0-5 Early Years L&D delay Strategic Group of representatives from EYs families, provisions and services to ensure partnership working is effective.
- We will make links with the Connecting Communities programme.

- Effective partnerships across charities and community groups offering EYs L&D delay support
- Celebrated experiences of EY L&D delay across the borough.
- An established Early Years L&D delay Committee.
- EYs L&D delay links are embedded with the Connecting Communities programme

Lead:
Early Years and
Childcare Team
**In partnership
with:**
- CFC Services
- SEND Service
- Early Help Service
- NELFT Universal
and Targeted Health
Services
- Parent/Carers
- EY Provisions
- Community
Representatives

Appendix 1: Strategic Mapping

	Clear and accessible Early Years L&D delay information and services for parents, carers and professionals.	Children and their families are supported by joined up services through their Early Years.	Parents and Carers are empowered to make informed decisions for their child with L&D delay and family.	Early Years provisions and services are high-quality, inclusive and safe for children with L&D delay.	Community resources and groups for Early Years children with L&D Delay are utilised and celebrated.
<p>Waltham Forest Vision for Children and Young People with Special Educational Needs and Disabilities aged 0 - 25</p>	<ul style="list-style-type: none"> To strengthen a Local Offer which is accessible and supports children and young people to achieve the best they can in education and in life To explore opportunities to improve efficiencies and effectiveness across the service through the use of ICT 	<ul style="list-style-type: none"> To meet children and young people's needs and outcomes via an EHCP process which is effective and in line with Code of Practice expectations and supports them to develop their independence. To deliver good quality statutory social work for 0-25 age range of children and young people alongside EHCP process 	<ul style="list-style-type: none"> To support carers (including young carers) in their caring role and to have a healthy life outside of caring To support children and young people with L&D DELAY to prepare for adulthood so they can live independently and secure work opportunities 	<ul style="list-style-type: none"> To provide high quality, local, inclusive nursery and education provision which supports independence and achieving the best possible outcomes 	<ul style="list-style-type: none"> To provide clear, comprehensive and integrated health pathways, which support children and young people to live and learn well so they can be healthy, active and visible in their local communities
<p>Early Years and Childcare Strategy</p>		<ul style="list-style-type: none"> Ensuring we take a Think Family Approach and provide early childhood services that are fully integrated and are working together effectively to identify and respond to vulnerable children & families, as well as providing early help and prevention services to families in need Identifying Children with L&D DELAY, or social communication and language issues earlier and providing them with appropriate support and services 	<ul style="list-style-type: none"> Ensuring sufficient high-quality childcare places are available for those who wish to take up a place in their chosen locality Delivering services that build family resilience and empower parents and carers to support their children's learning and development 	<ul style="list-style-type: none"> Increasing take up of free early education places and Early Years Pupil Premium (EYPP) payments The provision of high quality, inclusive and safe early years and childcare services that prepare children for school. Providing our early years workforce with access to support, advice and training as well as development opportunities that lead to strong leadership & governance and quality service delivery 	<ul style="list-style-type: none"> Building upon existing work, as well as developing strong links, partnerships and collaborative working across Maintained and Private, Voluntary and Independent PVI sector providers and teams

	Clear and accessible Early Years L&D delay information and services for parents, carers and professionals.	Children and their families are supported by joined up services through their Early Years.	Parents and Carers are empowered to make informed decisions for their child with L&D delay and family.	Early Years provisions and services are high-quality, inclusive and safe for children with L&D delay.	Community resources and groups for Early Years children with L&D Delay are utilised and celebrated.
Life Chances (Early Years)	<p>5. Encourage the use of and access to digital home learning tools</p> <p>8. Advertise the early years offer and the financial support available through digital platforms, and improve signposting on the website, whilst supporting those without access to digital technology.</p>	<p>2. Ensure all Council departments are signed up to the importance of providing sufficient childcare places.</p>	<p>6. Consider and test whether high quality childcare in group settings can be complemented by wrap-around home care that is affordable, particularly for disadvantaged families.</p>	<p>1. Undertake research into why early years take-up is low, particularly in disadvantaged families, building on the findings of the 2016 Childcare Sufficiency Assessment.</p> <p>3. Support schools and settings that are experiencing difficulty recruiting and retaining quality staff.</p> <p>4. In partnership with providers, support the retention of top professionals through a formal celebration event to reward excellent early years provision.</p>	<p>7. Work with parents and businesses to encourage take-up of free childcare provision and other early years services, particularly by disadvantaged families, looking at the opportunity the Integrated Communities pilot provides for focused support.</p> <p>9. Use the <i>Connecting Communities programme</i> to encourage residents within and across communities to 'reconnect' and share solutions to local problems.</p>
SEND 0-5 Review	<ul style="list-style-type: none"> Centralised, up to date and compliant Early Years Local Offer compliant with statutory requirements and outlines the support/services available including pathways/journeys for parents/carers and ensure early years professionals are aware of this offer. All early years professionals working across LBWF, Health, school nursery classes and Ofsted registered childcare providers have the knowledge and skills to be able to support the needs of CYP with L&D DELAY and their families. 	<ul style="list-style-type: none"> A common assessment framework and Early Years Support plan is in place across all early years services which ensures that that families are considered for/offered key services around Health, family support and learning and development, progress is assessed, transitions and onward referrals are smooth and are informed by work carried out by early years services and impact/outcomes can be measured/evidenced. EHCP issued in line with need and where appropriate at the point of reception age. Improve consistency between assessment of children's needs across SENIF funding and EHCP funding decisions 	<ul style="list-style-type: none"> Procedures and funding arrangements are in place to remove barriers to children with SEND being able to take up their statutory entitlement to a free early education place 	<ul style="list-style-type: none"> Quality inclusive and targeted/specialist services are available at the right level, in the right way and at the right time which meet the needs of children and allow them to achieve expected levels of development and empower parents to support their children to achieve expected levels of development 	

Clear and accessible Early Years L&D delay information and services for parents, carers and professionals.

Children and their families are supported by joined up services through their Early Years.

Parents and Carers are empowered to make informed decisions for their child with L&D delay and family.

Early Years provisions and services are high-quality, inclusive and safe for children with L&D delay.

Community resources and groups for Early Years children with L&D Delay are utilised and celebrated.

Implementing the HCP Schedule on page 32 of [Healthy Child Programme](#) from the Department of Health

Healthy Child Programme - Pregnancy and the first five years of life

Universal	Progressive	
<ul style="list-style-type: none"> • Health and development reviews • Screening and physical examinations • Immunisations • Promotion of health and wellbeing • Promotion of sensitive parenting and child development • Involvement of fathers • Mental health needs assessed • Preparation and support with transition to parenthood and family relationships • Signposting to information and services 	<ul style="list-style-type: none"> • Emotional and psychological problems addressed • Promotion and extra support with breastfeeding • Support with behaviour change • Parenting support programmes, including assess and promotion of parent-baby interaction • Promoting child development, including language • Additional support and monitoring for infants with health or developmental problems • Common assessment framework completed • Topic-based groups and learning opportunities • Help with accessing other services and sources of information and advice 	<ul style="list-style-type: none"> • High-intensity-based intervention • Intensive structured home visiting programmes by skilled practitioners • Referral for specialist input • Action to safeguard child • Contribution to care package led by specialist service
<p>Be alert to risk factors and signs and symptoms of child abuse and follow local safeguarding procedures where there is cause for concern.</p>		

Appendix 2: Indicative Learning Journey for under 5's with Learning and Development Delay



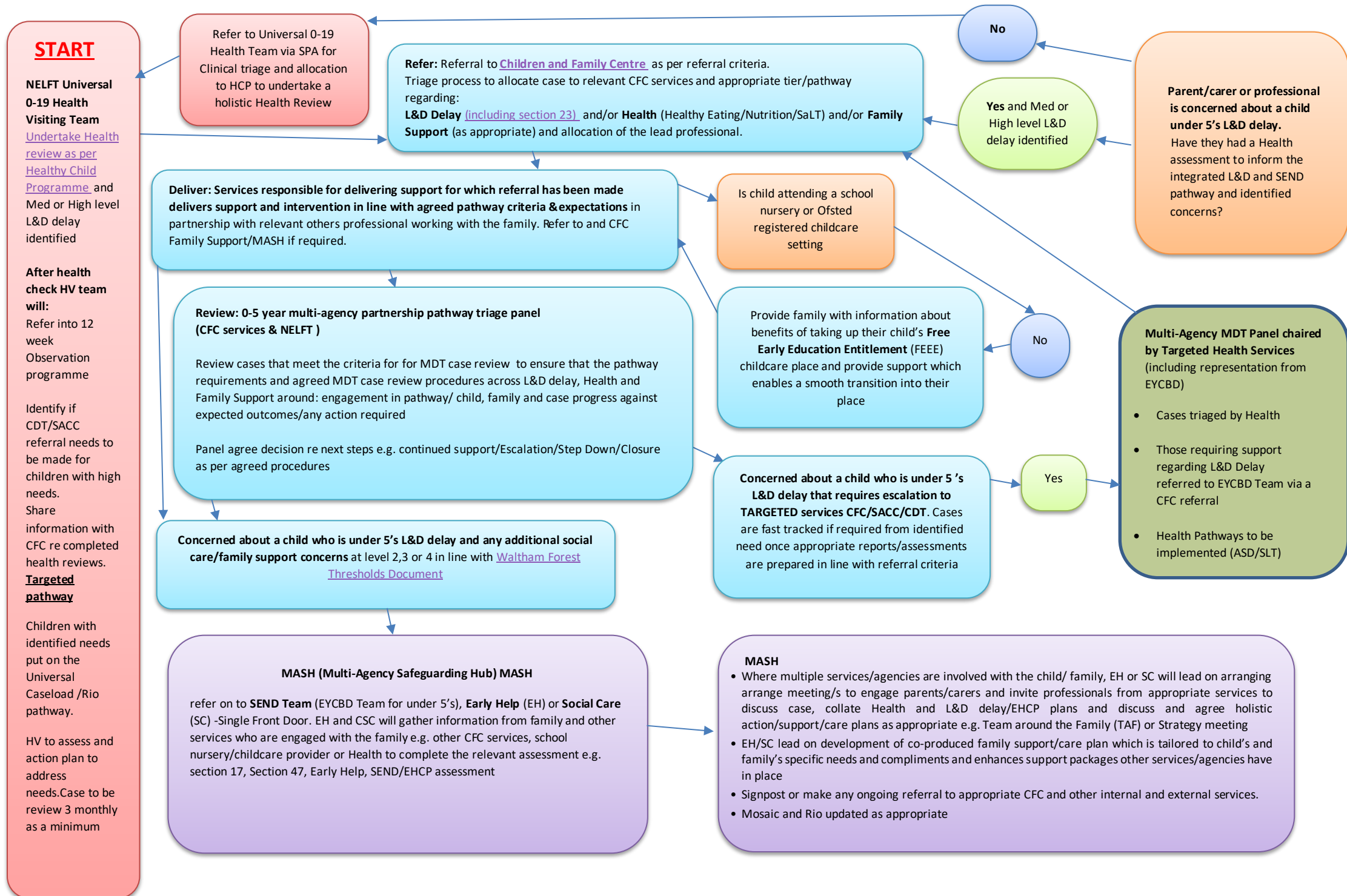
ADDITIONAL INFORMATION

*in line with agreed L&D pathway [EYFS](#) & [SEND code of practice](#) requirements with support from EYBD as appropriate

** CFC staff supporting L&D delay will regularly monitor eligibility status for an FEED place, provide information regarding the eligibility criteria (if applicable) and benefits of taking up their Free Early Education entitlement and encourage to take some/all of it up when parents/carers feel their child/family is ready. CFC staff supporting L&D delay commence application for SEN Inclusion Funding in relation to additional costs to setting in meeting child's needs if appropriate

***Where, despite the setting taking relevant and purposeful action to identify, assess and meet the L&D delay /SEND needs of the child, the child has not made expected progress

Appendix 3 – Integrated L&D Delay Single Point of Referral and Pathway for services for under 5's



Appendix 4 – 0-5 Early Years L&D Delay Strategic Group Governance and Reporting

Health and Well-Being Board

Chair: Councillor Naheed Asghar

Representation on Board from: Councillors, Public Health, CCG, Education/SEND, Planning & Development, Children's Social care, Community Sector Health Services, Early Help, Legal, Safeguarding, Parks and Leisure, Housing

SEND Strategic Board 0-25

Chair: LBWF Director of Learning

Representation on Board from: LBWF SEND Service, Public Health, NELFT, CCG, LBWF Early years and Childcare, Children's Social Care, Early Help/Children and Family Centres, Schools rep, Waltham Forest Parent Forum, LBWF Data Team, LBWF Finance, LBWF Corporate commissioning

0-5 EY L & D Delay Strategic Group*

Chair: LBWF EYCBD Service

Representation on Group from: LBWF EYCBD Service, LBWF SEND Service, Public Health, NELFT, Children's Social Care, Early Help/Children and Family Centres, EY Schools rep, EY Ofsted registered PVI rep, Voluntary Sector rep Waltham Forest Parent Forum (Advisory Role: LBWF Data Team, LBWF Finance, LBWF & CCG commissioning)

(also reports into and obtains feedback from Children and Family Centre Strategic Board)

*Further discussion and agreement required as to whether the current 2-year-old partnership pathway group would be integrated into the 0-5 EY L&D Delay Strategic Group or is a distinct group which focuses specifically on 2 year olds

Appendix 5: Aligning Levels of L&D Delay with the Waltham Forest Thresholds Document (Draft)

Learning & Developmental Delay children 0-5 yr olds (not in a setting)

Tier 4 – Profound and multiple learning difficulty/L&D delay need

Child L&D delay needs have been formally assessed by an QTS or EYFSP and/or assessed/diagnosed by a health professional as being 25 months plus L&D delay or profound and multiple learning difficulty.

Support via the High Level Home Learning Service delivered by the EYCBD service (would include a range of universal, targeted and specific home and centre based 1:2:1 and group L&D activities). Referrals made to specialist services as appropriate if child not making expected levels of progress.

Tier 3 – Severe/complex L&D delay needs

Child L&D delay needs have been formally assessed by an QTS or EYFSP and/or assessed/diagnosed by a health professional as being 13-24 months L&D delay or severe learning difficulty. Support via the Medium Level Home Learning Service delivered by the EYCBD service (would include a range of universal, targeted and specific home and centre based 1:2:1 and group L&D activities). Referrals made to specialist services as appropriate if child not making expected levels of progress.

Level 2 – Moderate L&D delay needs

Child L&D delay needs have been formally assessed by an QTS or EYFSP and/or assessed/diagnosed by a health professional as being 7-12 months delay. Support via CFC universal plus EYFS and SaLT services to complete an L&D delay plan and provide agreed package of L & D support (would include a range of universal, targeted and specific 1:2:1 and group L&D activities). Referrals made to specialist services as appropriate if child not making expected levels of progress.

Level 1 Universal Plus- Emerging L&D delay need

Child where there are identified concerns regarding the child's L&D delay but this has not been formally assessed by an QTS or EYFSP or assessed/diagnosed by a health professional. Support via Support via CFC universal plus EYFS and SaLT services to complete an L&D assessment to establish child's level of L& D delay. If child has up to 6 months L&D delay provide agreed package of L & D support under universal plus or refer to level 2,3 or 4 L&D delay support for delay of 6 months +

LBWF Threshold and practice document for professionals document

Tier 4: Children in acute need

These children are suffering or are likely to suffer significant harm. This is the threshold for child protection. These children are likely to have already experienced adverse effects and to be suffering from poor outcomes. Their needs may not be considered by their parents. This tier also includes Tier 4 health services which are very specialised services in residential, day patient or outpatient settings for children and adolescents with severe and /or complex health problems. This is likely to mean that they may be referred to children's social care under section 20, 47 or 31 of the Children Act 1989.

Tier 3: Children with complex multiple needs

These children require specialist services in order to achieve or maintain a satisfactory level of health or development or to prevent significant impairment of their health and development and/or who are disabled. They may require longer term intervention from specialist services. In some cases these children's needs may be secondary to the adults needs. This is the threshold for an assessment led by children's social care under Section 17, Children Act 1989 although the assessments and services required may come from a range of provision outside of children's social care.

Level 2 - Multiple Family Support/social needs

These are children with additional needs, who may be vulnerable and showing early signs of abuse and/or neglect; their needs are not clear, not known or not being met. These children may be subject to adult focused care giving. This is the threshold for a multi-agency Early Help assessment to begin. These are children who require a lead professional for a co-ordinated approach to the provision of additional services such as family support services, parenting programmes and children's centres

Level 1 Emerging needs

those children who have low level vulnerability whose additional needs can be met by a single agency in universal services e.g. CFC services.

Appendix 6: Next/Steps Actions required to deliver our commitments

Operational case management process	Action required	Who
Case Referral	Agree and implement: <ul style="list-style-type: none"> • Referral submission process • Referral criteria/levels (in-line with WF thresholds and levels of L&D delay- draft Appendix 5) • Initial triage process to identify level of need/support required (level 1 to 4 and the appropriate pathway to refer to. Higher level L&D delay casework to be led on by EYCBD, lower level L&D Delay casework to be led on by CFC Universal plus EYFS and SaLT services) • Pathways which set out clear expectations around service delivery/support across each area/level (Using Health service SOPS template as a basis of this) • Process to agree allocation of lead professional and clarification of the lead professionals role 	Early Help Health (NELFT) EYCBD Service
Case Delivery	<ul style="list-style-type: none"> • Ensure services responsible for delivering support are aware of the service delivery requirements/expectations for their element of the pathway and deliver this in partnership with others professionals working with the family • Develop and agree quality assurance process that will be implemented by those responsible for delivering pathways to ensure that required pathway criteria & expectations are being consistently met (this will feed into the overall multi-agency strategic QA process) • Develop and implement case recording procedures 	Early Help Health (NELFT) EYCBD Service
Case Review	<ul style="list-style-type: none"> • Develop and implement a 0-5 year multi-agency partnership pathway triage panel (this will build on the work of the existing 2YO multi-agency triage panel) • Develop criteria for reviewing cases at 0-5 year multi-agency partnership pathway triage panel across L&D delay, Health and Family Support around (may include areas such as non-engagement with pathway, lack of child/ family/case progress against expected outcomes etc etc) • Develop and implement 0-5 year multi-agency partnership pathway triage panel processes for Continuation, Further review/monitoring, escalation, step down, closure of cases 	Early Help Health (NELFT) EYCBD Service