

# CIVIC FOOD HALL



## THE HIGHLIGHTS



790 m2 GIA



Shell and Core



On public square



145,000 visitors per year



Completion Autumn 2025

## Civic Building

The new Civic building will launch in Autumn 2025 and complete the trio of campus buildings on Fellowship Square, Waltham Forest's flagship destination.

The building itself comprises of 2 floors of offices, the vision for the ground floor is a lively food hall, showcasing the best local food & drink enterprises that can link seamlessly with the cultural offer on Fellowship Square and across the campus.

## New Neighbourhood

This exciting food offer is central to Waltham Forest's newest neighbourhood which will comprise of:

- Walthamstow Assembly Hall event space with a 2k cap
- An annual programme of markets, events and performances on the square
- 433 new, high-quality homes
- Council offices for over 2k staff on site
- Queen Elizabeth II Commemorative Garden
- The Arch by Henry Moore
- Outdoor performance and play provision
- New sensory garden



# THE VISION



## Partnership Vision

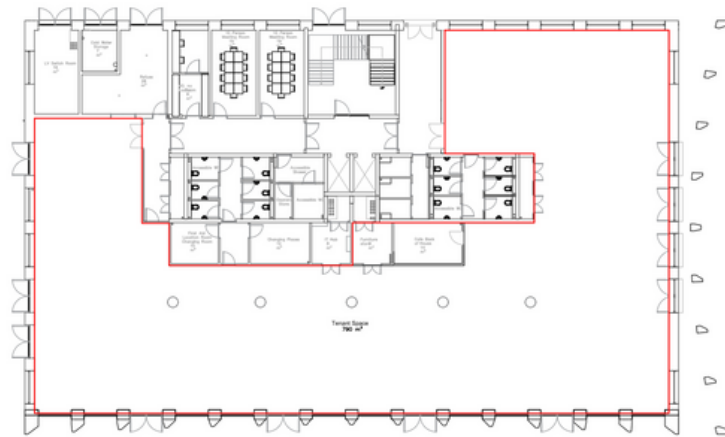
Our vision for the Civic Building is to create a long-term partnership with a food market hall providing:

- A food hub showcasing local food enterprises
- An incubator kitchen for first stage food entrepreneurs providing training and employment
- Community events to drive inclusion and belonging
- Culturally connecting with the wider offer in the borough

## Specification

Shell and core fit out  
Outdoor space  
Access to Fellowship Square  
Service access

## Floor Plan



---

**We are inviting proposals from experienced food hall operators.**

**To register your interest, contact:**  
**[bisi.oyekanmi@walthamforest.gov.uk](mailto:bisi.oyekanmi@walthamforest.gov.uk)**  
**Head of Commercial**

---