

WALTHAMSTOW ASSEMBLY HALL

THE HIGHLIGHTS

-  1871 m2 NIA
-  Sound system installed
-  Acoustically treated
-  Mechanically ventilated
-  Commercial kitchen
-  On public square

Iconic Building

This 1930s art deco building is located in the heart of Walthamstow, it has over 1800sqm of public space over two floors incorporating a main hall, commercial kitchen and a range of spaces for up to 1200 guests.

Additionally, the Assembly Hall offers superb acoustics and lends itself to live performance and music with separate bars, a green room, private balcony space, entrance foyer and a readymade ticket office.

A Multi- Use Space

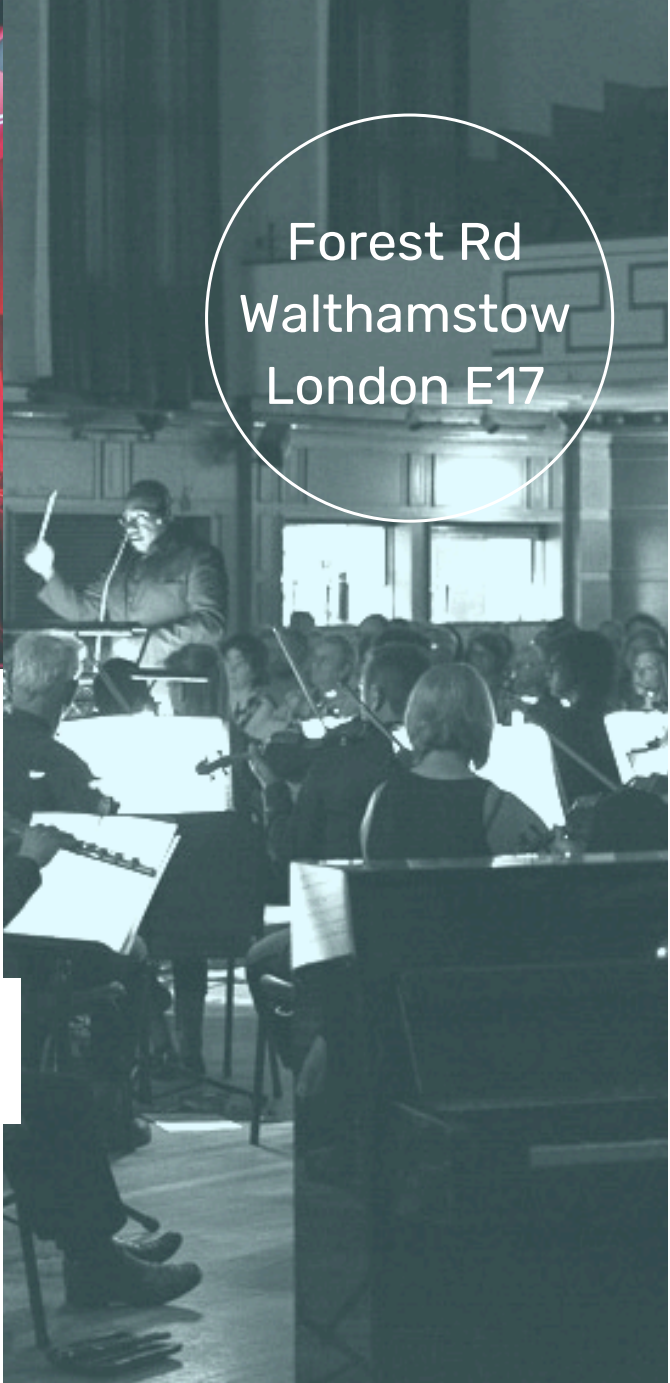
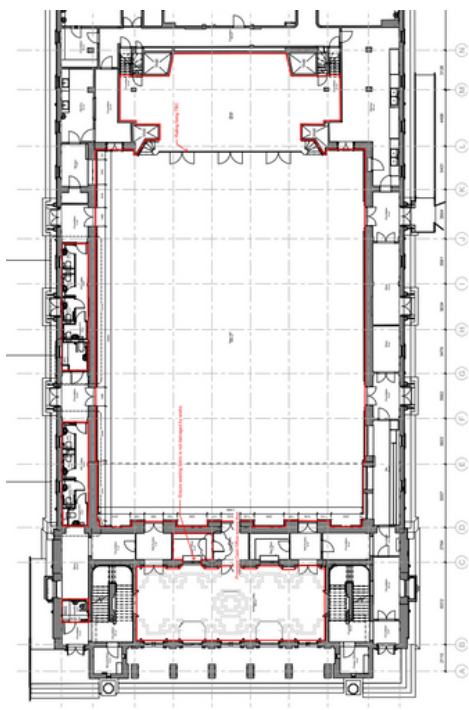
This building sits on Fellowship Square as a flagship destination for the borough alongside weekend markets, a food & drink hall and other cultural partners in the area.

The large multi-use spaces are perfect for live music, theatre, indoor markets, cultural events and much much more. It can also open up revenue streams by hosting weddings for up to 450 guests seated and catered for as well as exhibitions, conferences and expos for around 500 guests.



THE VISION

FLOOR PLAN



Forest Rd
Walthamstow
London E17

Cultural Heritage

With a rich history dating back to the 1960s, Walthamstow Assembly Hall has hosted many recordings of classical and iconic pieces, by the BBC including the Royal Philharmonic, The Rolling Stones, Sex Pistols, The Stranglers, and Iron Maiden.

It has recently been used as a venue to showcase theatre, comedy and live electronic artists such as the Nina Kraviz, Blessed Madonna, Andy Stott, Daniel Avery and others.

Partnership Vision

Our vision for the Assembly Hall is to create a long-term partnership with an operator to reestablish this space as a world class venue consortium to manage Walthamstow Assembly Hall as a live music and events venue. Offering an exciting programme combining high quality ticketed events with commercial and community led events, Walthamstow Assembly Hall should deliver significant social value for local enterprises and residents.

For more information about this exciting opportunity, please email:
bisi.oyekanmi@walthamforest.gov.uk
Head of Commercial
