

Waltham Forest Town Hall, Fellowship Square, Forest Road, London E17 4JF

**Email:** [SPDconsultation@walthamforest.gov.uk](mailto:SPDconsultation@walthamforest.gov.uk)  
**Date:** 4 March 2024

Dear Resident, Business or Stakeholder

**Re: Draft Leyton Mills Supplementary Planning Document**

We are writing to inform you of the forthcoming consultation relating to the Leyton Mills Supplementary Planning Document (SPD) which has been prepared to provide guidance for how the area could develop over the next 15 years as an inclusive and sustainable neighbourhood that is accessible to all.

**Background to the SPD**

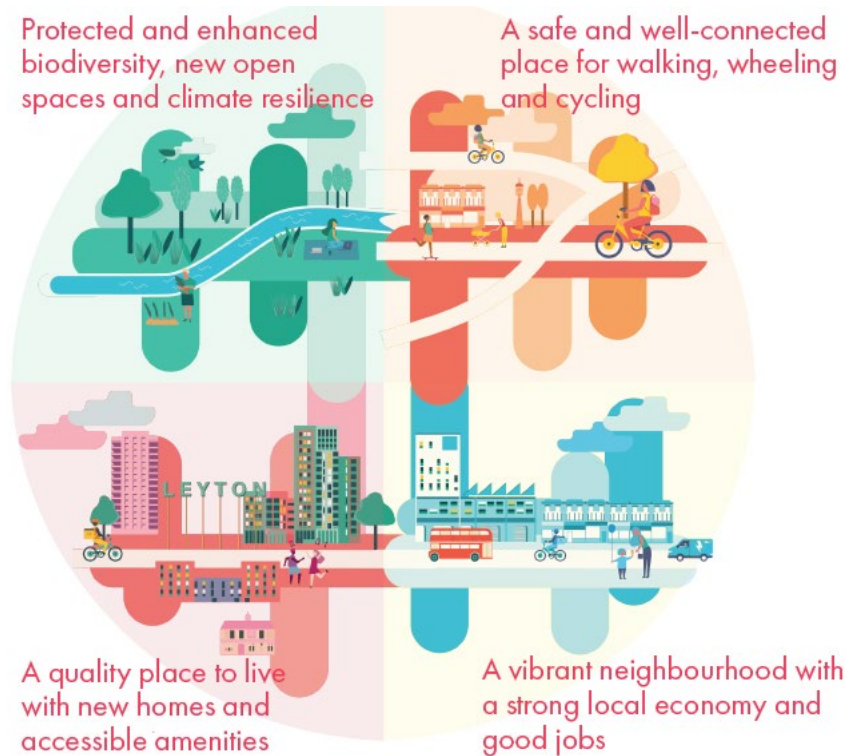
The London Borough of Waltham Forest have been engaging with landowners, ecologists, architects, developers, community members and businesses to establish a vision for how the Leyton Mills area could develop. This vision is set out in the Leyton Mills SPD.

The area covered in the SPD includes four key sites: New Spitalfields Market; Leyton Mills Retail Park; Temple Mills bus depot; Eton Manor in the Queen Elizabeth Park. Two of the sites (Temple Mills and Eton Manor) are within the London Legacy Development Corporation (LLDC) area so the Council have worked closely with them in the preparation of the Leyton Mills SPD.



The SPD will ensure that these sites are developed in a joined-up way to achieve our aims for better green spaces that reduce flood risk and respond to the Climate Emergency, improved transport and connectivity, improved air quality, new jobs and cultural destinations and high-quality sustainable homes.

The key themes of the SPD are:



### What has happened so far?

To guide the writing of the Leyton Mills SPD the council appointed a consultant team to prepare Leyton Mills Development Framework following a first phase of public engagement in 2021.

Last summer we consulted again asking for your thoughts on the key vision principles in the Framework and what you would like to see in the Leyton Mills SPD. This consultation took place alongside five other SPD documents being created by the council. We want to thank you for your comments which have helped shape the Leyton Mills SPD.

### How can you get involved?

We are seeking your views on the Leyton Mills SPD and details of the consultation can be found at this <https://talk.walthamforest.gov.uk/leyton-mills-spd> or by using the QR code:



This consultation will open for a six-week period starting **Monday 4 March and will close on 5:00pm Sunday 14 April 2024**. Your views will help guide amendments to the document and a final draft will be submitted for formal adoption by the Council.

Yours faithfully

**Place and Design Team, London Borough of Waltham Forest**