

Enjoy Waltham Forest

WALKING AND CYCLING ACCOUNT 2023



WALK
CYCLE
ENJOY

enjoy
WALTHAM FOREST



TRANSPORT
FOR LONDON

MAYOR OF LONDON



CONTENTS

Foreword	3
Scheme overview map	4
Key statistics	5
Walking and cycling infrastructure scheme updates.....	6
Climate adaptation schemes	12
Reimagining our streets	14
Street parties.....	16
Exploring the borough on foot.....	17
Cycling with confidence.....	18
Cycling for all	23
Cycle parking	24
Working with businesses.....	25
Working with schools	28
Safer streets	34
Electric vehicle charging points.....	37
Car Clubs	39
Working with community groups.....	40
Research, monitoring and evaluation.....	43
What’s next?	45



FOREWORD

I am delighted to introduce our 2023 Walking and Cycling Account which celebrates the walking and cycling schemes designed and constructed over the past 12 months as part of the Enjoy Waltham Forest Programme. This is our seventh(!) Walking and Cycling Account which provides updates on schemes that have been designed and outcomes of initiatives that have been implemented, showcasing the dedication and collaboration of all involved.

The work detailed in this year's account highlights the continued commitment to working towards Waltham Forest becoming 'A Place for People not Cars', a key action from the Climate Action Plan which was published in 2022 and focuses on reaching the target of at least 80% of journeys in Waltham Forest being made by walking, cycling or public transport modes by 2030.

Our walking and cycling programme has continued to expand to include additional elements to encourage sustainable transport, such as the increase in provision of Electric Vehicle charging points, Sustainable Drainage Schemes (SuDS) and parklets to respond to the ever-changing transport and climate environment.

Key highlights for me this year include introducing a new Low Traffic Neighbourhood (LTN) in the Lloyd Park and Higham Hill Area in Walthamstow, opening four new Cycle Hubs, installing our 750th Bikehangar and implementing innovative flood mitigation measures in Upper Leytonstone and Walthamstow.

Alongside schemes that we have introduced, this year Transport for London (TfL) expanded the Ultra Low Emission Zone (ULEZ) from The North Circular Road to include the majority of Highams Park and Chingford. The ULEZ has been successful in improving air quality in central London, and now people living in outer London are also able to breathe cleaner air too – as they deserve.

The positive impact of these schemes is undeniable. We've witnessed an increase in the number of residents choosing to walk and cycle, leading to a reduction in traffic congestion, cleaner air, and a more active population. The economic benefits are also clear, with increased footfall for local businesses and a more attractive environment for residents and visitors alike.

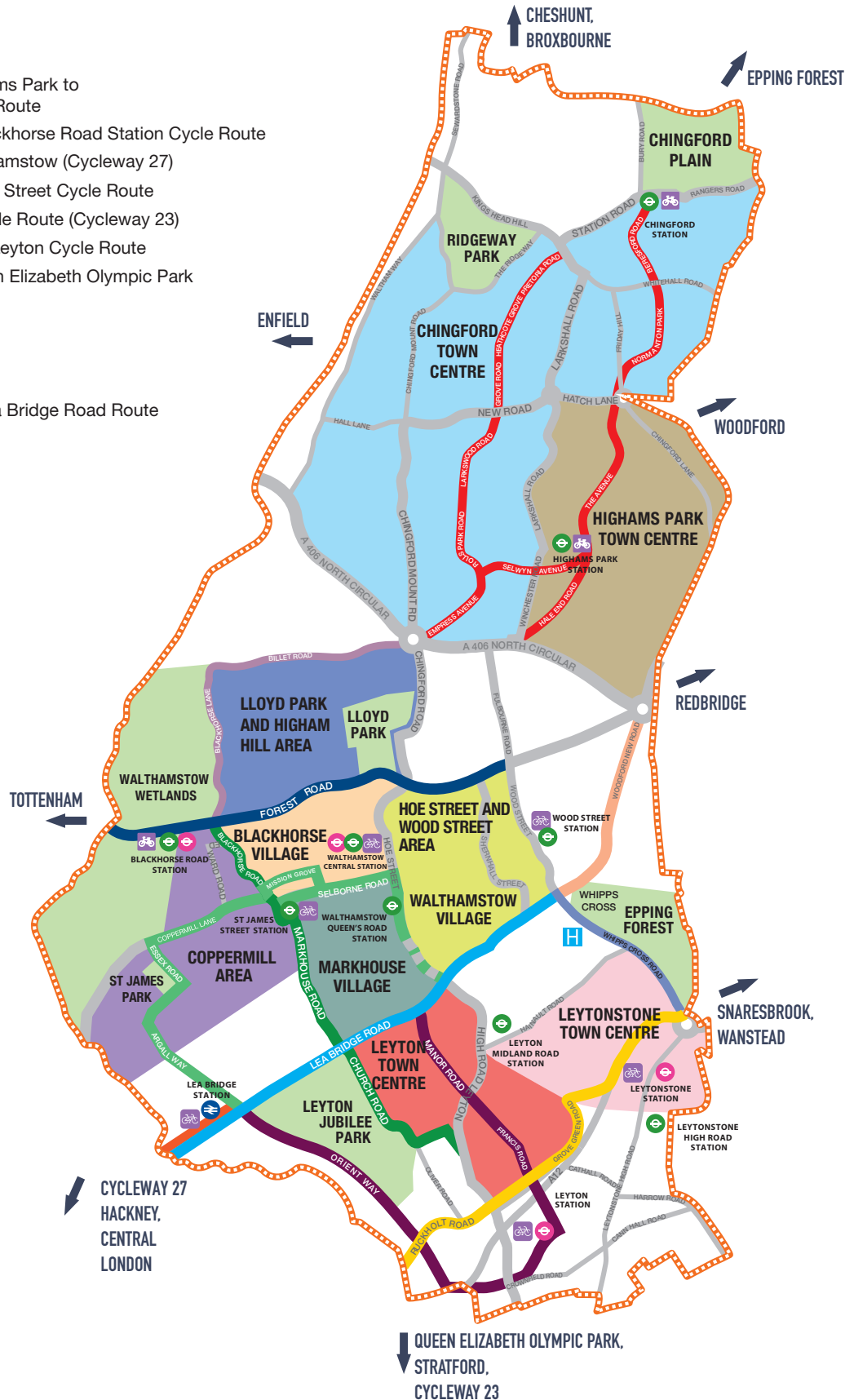
As we approach 10 Years of the Enjoy Waltham Forest Programme, I believe it is important to reflect on how we envisioned a more vibrant, healthier, and connected community, and it is incredibly rewarding to see these goals not only embraced but demonstrably achieved in such a short timeframe.

Cllr Clyde Loakes
Deputy Leader and Cabinet Member
for Climate and Air Quality

SCHEME OVERVIEW MAP

MAP KEY

- █ Chingford and Highams Park to Crooked Billet Quiet Route
- █ Crooked Billet to Blackhorse Road Station Cycle Route
- █ Bloomsbury to Walthamstow (Cycleway 27)
- █ Forest Road to Wood Street Cycle Route
- █ Lea Bridge Road Cycle Route (Cycleway 23)
- █ Blackhorse Road to Leyton Cycle Route
- █ Leytonstone to Queen Elizabeth Olympic Park Cycle Route
- █ Leyton to Lea Bridge
- █ Woodford New Road
- █ Whipps Cross Road
- █ Selborne Road to Lea Bridge Road Route
- Cycle Hub
- Hospital
- National Rail Station
- London Underground Station
- London Overground Station
- ▬ Borough Boundary



KEY STATISTICS

Infrastructure

	2014-2021	2022	2023	Total
Km of cycle track	50	6.4	0.4	56.8
Modal filters	79	4	6	89
Blended crossings	187	10	4	201
Public realm improvements	60	7	14	81
Trees planted	800	31	13	844

Complementary behaviour change initiatives

	2014-2021	2022	2023	Total
Bikehangars	577	64	122	763
Cycle Hubs	7	0	4	11
EV charging sockets	239	270	191	700
Cycle training – number of people trained	15,888	2,862	3,618	22,368
Dr Bike – number of cycles checked	6,776	1,779	1,822	10,377
School Streets	17	3	2	22
TfL STARS accredited schools	60	66	69	69

WALKING AND CYCLING INFRASTRUCTURE SCHEME UPDATES



VISUALISATION OF HOE STREET, NEAR TO GRANVILLE ROAD JUNCTION, E17

Hoe Street – Orford Road to Lea Bridge Road

The Hoe Street scheme aims to improve active and sustainable travel options between Lea Bridge Road and Walthamstow Central, increasing connectivity between Walthamstow Town Centre and the surrounding area as well as the borough’s network of safe and direct walking and cycling routes.

Work on Phase 1 between Orford Road and Pendlestone Road started in late 2021 and was completed during 2022, funded via a number of short-term settlements from TfL.

Funding to deliver the remainder of the scheme was secured in 2023. Following a design review and statutory consultation in summer 2023, we worked closely with TfL to plan the works as Hoe Street forms part of the borough’s Strategic Road Network (SRN). Final approval was received in late 2023 and works are scheduled to commence in February 2024.

Forest Road - Blackhorse Junction to Walthamstow Wetlands

Almost 10 years since work first commenced to improve walking, cycling and the public realm at the eastern end of Forest Road, the final section of permanent road layout and active travel infrastructure was completed in 2023.

Since 2014 the Blackhorse Area has seen significant growth and regeneration with no fewer than seven major developments coming forward in the area bounded by Forest Road, Blackhorse Lane and Walthamstow Wetlands. Following completion of the last major development site (TfL and Barrett London’s ‘Blackhorse View’ development) the final road and cycle track alignment on the north side of Forest Road was completed, including a new traffic signal junction at Green Ferry Way with dedicated pedestrian and cycle crossing facilities on all arms. This marks a significant moment as people walking and cycling between Blackhorse Station, Walthamstow Wetlands and Haringey are now able to do so using safe, continuous, uninterrupted infrastructure.



SuDS, FOOTWAY AND CYCLEWAY IMPROVEMENTS ON FOREST ROAD, E17

Forest Road – Bell Junction to Woodford New Road

The next stage of the Forest Road scheme covers approximately 2.5km from the Bell Junction to Woodford New Road and aims to further improve conditions for walking and cycling along the entire length, including the transformation of five major signal junctions. The scheme also aims to deliver significant public realm enhancements, increased green infrastructure and improved climate resilience, supporting key developments, regeneration and growth along this strategic corridor including Fellowship Square, Patchworks Site (former Homebase) and Wood Street Library.

Public consultation on the final proposed scheme took place during early summer 2023. Over 6,000 leaflets were directly sent to the local community on and around Forest Road,

alongside a wide multi-channel communications approach publicising the consultation. Over 440 responses were received to the consultation, the majority in favour of the planned changes.

The scheme was subsequently approved for detailed design and construction, with a number of design adjustments taking on board local feedback during the consultation. The detailed design process started in autumn 2023 and is expected to be complete by summer 2024.

The first phase of works around the Wood Street junction and the Patchworks site is anticipated to commence in autumn 2024.



VISUALISATION OF FOREST ROAD (OUTSIDE FELLOWSHIP SQUARE), E17

South Leytonstone

During 2020 and 2021 we introduced and monitored a number of experimental traffic reduction schemes in partnership with LB Newham. The schemes were made legally permanent in early 2022 following an extensive monitoring and engagement programme. In deciding to make the changes permanent, we set out a further commitment to continue working with residents, businesses and TfL to investigate, and where possible, deliver further improvements in the area.

Our main priority was the development of an initial corridor improvement scheme for Harrow Road to help address a number of traffic related concerns and further support and enable walking and cycling in the area. These initial proposals aimed to reduce traffic speeds and reduce road danger, improve the public realm, give greater priority to walking and cycling, and increase connectivity across the road, better linking residents either side as well as to local green spaces.

Following consultation with local residents and businesses in 2022, Phase 1 works commenced in February 2023 and were completed in November 2023.

Phase 2 works have now commenced and include a redesign of the Harrow Road/Beechcroft Road/Cecil Road junction and are due to be completed by March 2024. In the longer term the Council is committed to working with the Harrow Road community to identify further improvements that will help reduce the volume of traffic in the area.

In addition to the Harrow Road Scheme, feasibility and concept development work started in late 2023 looking at potential permanent upgrades of all of the interim features that were introduced as part of the original experimental schemes. 16 locations across the South Leytonstone area where modal filters were introduced using temporary planters are currently being looked at to develop a range of localised public realm improvements which could include pedestrian and cycle improvements, planting, rain gardens and pocket parks.

In early 2024 the Council is planning to start a feasibility study looking at the Crownfield Road corridor, which was one of the roads that saw an increase in traffic during the original experimental traffic schemes.



SPEED REDUCTION MEASURES ON HARROW ROAD, E11



COMMUNITY PLANTING DAY ON HIGHAM HILL ROAD, E17

Lloyd Park and Higham Hill area

Following some initial investment in 2018 and 2019 to tackle a number of localised issues and concerns around speeding and road safety, 2022 saw the development of the next substantive phase of highway and transport proposals for the area. These aimed to address some of the key ongoing concerns around the volume, speed and impact of traffic, help further support and enable walking and cycling and public transport use in the area, and enhance the look and feel of the area. This next phase of proposals focused on the following areas:

- **Series 1** - bounded by Billet Road, Chingford Road, Forest Road, and is also bounded by and includes North Countess Road, Priory Court and South Countess Road.
- **Series 2** - bounded by Forest Road, Higham Hill Road and is also bounded by and includes Queen Elizabeth Road, Blenheim Road and Blackhorse Lane

Following public consultation at the end of 2022, a number of significant changes were made to the scheme in response to local feedback. This included redesigning the layout of modal filters in Series 1

and changing the planned modal filters in Series 2 into 'No Entry' restrictions. Some of the proposed public realm enhancements were withdrawn from the scheme and several additional locations added.

The traffic reduction elements of the scheme were introduced in October 2023 under Experimental Traffic Management Orders (ETMOs) which last for a maximum of 18 months, the first six months of which form a statutory consultation period in which the community, and wider public, can provide feedback on the scheme under live conditions. As with similar area-based schemes introduced over the past five years, a significant monitoring and evaluation programme is ongoing to assess the benefits and impacts of the scheme against a wide range of criteria, and this will help inform the decision-making process on whether to make the changes legally permanent in the future.

The planned public realm enhancements and corridor improvement scheme on Priory Court are currently ongoing and in various stages of construction. It is anticipated that all works will be complete by late spring 2024.

Local cycle route connectivity improvements

A number of key crossing improvements were initially identified in 2022, to address gaps in the Council's strategic cycle route network and to better link a number of established Low Traffic Neighbourhood areas in the south and centre of the borough.

Three locations were prioritised for design development in 2023, with works scheduled to take place between January and April 2024. The three priority locations are:

- **High Road Leyton by Maud Road and Trelawn Road:** The scheme involves the conversion of an existing zebra crossing to a parallel pedestrian and cycle crossing with supporting changes on either side. As part of the scheme two-way cycling is to be permitted on Trelawn Road. Once installed, the crossing will address one of the two remaining gaps on the Leytonstone to Queen Elizabeth Olympic Park (QEOP) route.
- **High Road Leyton by Francis Road:** The scheme involves the introduction of a new parallel crossing to link Francis Road and the Francis Road area LTN with the North Leyton LTN and improve connectivity with the Council's flagship Lea Bridge Road route.
- **Church Hill:** The scheme includes the introduction of a new parallel crossing to link Aubrey Road with Woodberry Road, which has become a key local route for the community in the Walthamstow Village and Hoe-Wood Areas. The new crossing also responds to a key ask from Church Hill residents over the past few years to improve safety and provide more formal pedestrian crossing facilities.

Wayfinding

Since 2014 we have invested in the creation of over 50km of new cycle network in the borough, however, to date only a relatively small proportion of our network has been formally signed and included within the London-wide publicised Cycleway Network.

Prior to 2023 the only routes formally incorporated into the London-wide network were Lea Bridge Road (Cycleway 23 – C23) and the Waltham Forest part of the Walthamstow to Bloomsbury Route via the Coppermill area (Cycleway 27 – C27, formerly Quietway 2).

In 2023 we substantially increased our formally signed network to include Woodford New Road (C23 extension); Forest Road (C24) and Blackhorse Station to QEOP via the Coppermill Area, Orient Way and Temple Mills Lane (C26).

In addition, wayfinding design work on a further five routes also commenced, with works scheduled to take place in spring 2024. The five additional routes include:

- Leytonstone to QEOP via Grove Green Road and Ruckholt Road (including an extension at the Leytonstone end along Whipps Cross Road)
- Blackhorse Station to Leyton via Blackhorse Road, Markhouse Road, North Leyton and Francis Road
- Lea Bridge Road to Chingford Road via Walthamstow Village and Fellowship Square
- Forest Road to Chingford – Station Road (west alignment) via Crooked Billet, Memorial Park and Chingford Mount Cemetery
- Forest Road to Chingford – Station Road (east alignment) via Highams Park and Friday Hill.



CYCLEWAY WAYFINDING AT THE JUNCTION OF MORLAND ROAD AND COPPERMILL LANE, E17



RAINGARDENS AT THE JUNCTION OF BLACKHORSE ROAD AND TENBY ROAD, E17

Coppermill Area

The Coppermill Area Liveable Neighbourhoods Scheme encompasses the area bounded by Forest Road and Blackhorse Road Station to the north, St James Street to the east, Argall Industrial Estate to the south/southwest and the Lower Lea Valley/Walthamstow Wetlands to the west.

The project commenced in 2018 and a comprehensive improvement plan was developed for the area including:

- Modal filters
- A bus gate on South Access Road
- Public realm improvements
- Rain gardens
- Cycle tracks
- One-way systems
- Continuous footways
- Measures on Brunel Road (outside Barn Croft Primary School) and Verulam Avenue (outside St Saviour’s C of E Primary School)
- Coppermill Lane corridor pedestrian and cycle improvements

Despite the disruption and financial uncertainty caused by the Covid-19 pandemic, the Council managed to deliver a large proportion of the aspirational scheme between 2020 and 2022, using a variety of funding sources and delivering some interventions using low cost and experimental approaches where needed.

In 2022 the experimental elements of the scheme were made legally permanent, and the Council committed to identifying the additional funding needed to take forward some of the outstanding components of the original scheme.

The Council was successful in securing some further funding in 2023 and this has allowed the following additional improvements to be progressed:

- An upgrade of all remaining speed cushions in the area to sinusoidal humps
- A permanent public realm improvement scheme on Station Road by St James Street to upgrade the current interim/temporary scheme.
- Pedestrian priority improvements along St James Street including new continuous footways.
- Public art improvements across the area with a focus on Coppermill Lane.

Traffic calming upgrade works commenced in late 2023 with the remaining improvements scheduled to commence in February/March 2024 and due for completion by June 2024.



Town Centre Parklets:

Since 2020 when the first ‘micro-parklets’ were installed on Church Lane, our Leytonstone Town Centre Parklet Programme has gone from strength to strength with more and more businesses requesting parklets be delivered in the area, recognising the benefit they can bring in.

Two new parklets were introduced in 2023 at Luna Lounge and Marrakech Delight on Church Lane. We now have parklets at the following locations in Leytonstone Town Centre:

- San Marino, 668 High Road Leytonstone, E11
- Wild Goose Bakery, 654 High Road Leytonstone, E11
- Stone Mini Market, 721 High Road Leytonstone, E11
- Bocca Bocca, 781 High Road Leytonstone, E11
- The Sunflower Café and Creperie, 777-779 High Road Leytonstone, E11
- Fitness Hub East London, 771-773 High Road Leytonstone, E11
- Luna Lounge, 7 Church Lane, E11
- Marrakech Delight, 13 Church Lane, E11

Whilst the BLEN funding, which we have been using to deliver parklets across Leytonstone is now unfortunately exhausted, we are continuing to explore funding options moving into 2024 and hope to be able to introduce more in response to the high level of demand.

CLIMATE ADAPTATION SCHEMES

Leytonstone BLEN

Since 2020 we have been delivering improvements in Leytonstone as part of our Business Low Emissions Neighbourhood (BLEN) programme, aimed at reducing exposure to road transport generated pollutants and improving overall air quality through a range of active and sustainable travel infrastructure improvements and public realm enhancements. Two core projects continued throughout 2023:



Green Links:

Following the successful delivery of the initial ‘Green Links’ project between Leytonstone Town Centre and Wanstead Flats, additional funding was secured for a second phase on Davies Lane outside Davies Lane Primary School. We worked close with Davies Lane Primary School and their

‘Ecowarriors Team’ to help understand key issues, barriers and ideas on how the street outside should look and feel to inform the design of the new look space. Construction commenced in early 2023 and involved the creation of new rain gardens and planting areas alongside a more general upgrade of the public realm outside the school.

Works were completed in time for the start of the autumn term during which time a planting day with the pupils took place.

Following completion of the Davies Lane project we have now started to look at a further expansion of the Green Links initiative across the Leytonstone area. Concept design work is currently ongoing, and we are looking at future funding opportunities to be able to deliver further improvements in the area.

Gainsborough Road and High Road Leytonstone – improved cycleways:

2023 saw the completion of the main protected cycle track alignment along High Road Leytonstone between Gainsborough Road and Bush Road. The scheme includes the creation of over 400 metres of new protected space for cycling, linking into the existing facilities on High Road Leytonstone and Bush Road.



Preparatory works at the signalised junction with Gainsborough Road took place in advance of the main TfL signal works, however due to unforeseen delays TfL were unable to commence their work before the end of 2023 but are scheduled to deliver the final traffic signal layout in early 2024.

Flood Risk Mitigation schemes

Following the serious flooding in Waltham Forest during summer 2021, we have continued to develop a comprehensive programme of major flood risk mitigation schemes at priority locations across the borough, working with key stakeholders including Thames Water, the Department for Education, and local residents and businesses.

Upper Leytonstone flood mitigation schemes

Following delivery of the transformative Brooke Road Flood Mitigation Scheme in 2022, a similar major Sustainable Drainage System (SuDS) project was developed for Esther Road, Wadley Road and Kings Passage in the Upper Leytonstone area. During 2023 the Esther Road improvements were delivered and included;

- Installing rain gardens along the carriageway on Esther Road to manage rainwater run-off from hard surfaces after downpours. The rain gardens will include attractive, low maintenance, wildlife-friendly plants which will also help boost biodiversity.
- Rebuilding the entire road with permeable materials to provide a significant amount of additional water storage within the road construction. This additional storage helps slow the rate of water flowing into Thames Water infrastructure (drainage system), relieving pressure on the system during intense periods of rainfall, and helping to reduce drains overflowing and flooding.

Alongside the improvements in Esther Road, nearby Kings Passage (which forms part of the same water catchment area) was also reconstructed using a permeable construction process to provide further surface water storage in the event of heavy rainfall.

During 2023 we took the opportunity to undertake a design review of our originally proposed SuDS scheme for Wadley Road, in response to feedback from the community. A number of design adjustments are currently in the process of being made and it is hoped that we will be able to secure the funding in 2024 to deliver the final phase of this long-awaited scheme.



Scotts Road/Morley Road

This junction was initially identified as an area for potential improvement as part of our Leyton Town Centre Scheme. The current junction layout is excessively wide, creating significant accessibility problems for people walking in the area and also presents a significant opportunity for landscaping and SuDS improvements.

Unfortunately, at the time we were unable to secure the additional funding needed to deliver improvements at this location, but it has remained on our long list of priority locations ever since.

In 2023 we were able to secure some funding to enable concept designs for the junction to be developed.

These will be taken through a local community consultation process in early 2024 and include:

- Narrowing the junction by building out the kerb line between 107 Scotts Road and 87 Morley Road. By narrowing the carriageway, pedestrians can cross the road quicker, improving pedestrian safety and priority
- Introducing a landscaped area with SuDS and biodiverse planting to improve the look and feel of the area and improve drainage of surface water
- Introducing new residential Bikehangars.

REIMAGINING OUR STREETS

Parklets

A Parklet is a small green space, seating area or similar public amenity, located alongside the pavement on former road space. It is intended to improve the public realm through its appearance, its use, and its properties, and to highlight how a relatively small amount of carriageway space can be re-purposed to achieve a wide range of local benefits.

In 2023 we successfully delivered two parklets in Leytonstone, outside Luna Lounge and Marrakech Delight on Church Lane. These parklets offer patrons and the public an outdoor space to enjoy that includes seating and planting.

Both parklets have been met with positive feedback from residents, businesses, and visitors alike and highlight how small-scale urban design interventions can enhance the quality of public spaces and promote active travel. In total there are now 14 Council-led parklets and one resident-led parklet in Waltham Forest.



PARKLETS ON CHURCH LANE, E11



NEW PLAY MARKINGS INTRODUCED OUTSIDE MISSION GROVE PRIMARY SCHOOL, E17

Mission Grove Superzone

‘School Superzones’ are GLA-led place-based interventions around schools in areas of the greatest disadvantage. They aim to create healthier environments in the area immediately around a school, to help children and young people to stay healthy and improve their life chances and more equitable health outcomes.

The borough’s first School Superzone was introduced around Mayville Primary School in Leytonstone in 2019, and Mission Grove Primary School in Walthamstow was selected as the second site in 2023.

Working in collaboration with the Council’s Public Health team and Mission Grove Primary School, we led on the delivery of small-scale public realm improvements outside the Exmouth Road entrance to the South Site of Mission Grove Primary School. The implementation of playground style markings in the pedestrianised area outside the school and Walthamstow Queens Road Station adds a ‘play’ element to the space and encourages pupils and their families to play hopscotch and other classic playground games on their walk to and from school.

World Car Free Day

World Car Free Day takes place on 22 September every year and is typically celebrated on the weekend before or after this date; in 2023 Waltham Forest chose to celebrate on Sunday 24 September with 'Leytonstone Street Fest'.

The primary objective of this event was to promote the advantages of embracing a car-free environment, emphasising reduced air pollution and the encouragement of walking and cycling within a safer environment for residents. Waltham Forest has been a proactive participant in this movement for over 15 years, organising 'Car Free Days' to inspire people to envision their streets without traffic and congestion.

The event was held on Church Lane, E11, from 11am to 4pm, where the area was transformed into a vibrant public space offering a diverse range of activities, including market stalls, food and drink vendors, Council initiatives, health and wellbeing activities, and opportunities to try out different forms of cycling. Additionally, attendees were able to enjoy live music performances and family-friendly activities such as a bouncy castle, peddle-powered bubble machine and mini golf.



ACTIVITIES AT LEYTONSTONE STREET FEST, E11



STREET PARTIES

Street parties

We support residents and communities to host street parties and play streets in their local area. Street parties are road closures agreed by us and organised by the local community. We supported over **125** individual street party events in 2023!

Each street party organiser is provided with signs and cones to enable them to safely close their road to vehicles and a 'street party pack' filled with reusable play equipment such as chinks, balls and beanbags.

Street parties have taken place this year in Waltham Forest for many reasons including to celebrate the Coronation, 'trick or treating' at Halloween, festive fun and even Eurovision!

"We had a brilliant time at our street party. The rain held off and it was very well attended, with the highlight being a Coronation Bake Off Competition! Lots of neighbours who vaguely recognise each other met for the first time and there was a great community feel."

STREET PARTY ORGANISER



A CORONATION STREET PARTY ON RICHMOND AVENUE, E4

Coronation Street Parties

This year saw the Coronation of King Charles III and Queen Camilla. Communities across the borough from Leytonstone to Chingford and Walthamstow to Highams Park hosted their own events to celebrate the Coronation. Despite the typical British bank holiday weather **72 streets** hosted street parties on the weekend of 6-8 May 2023!



Play Streets

Play streets are regular temporary road closures to allow the local community to use their street for play. These sessions usually take place once a month and provide a great opportunity for children to play, neighbours to meet and community relations to grow. The most successful play streets are from residents who have previously hosted multiple street parties. This year we have supported one organiser to launch a new play street.

If you would like to host a street party or play street, please contact the Highways Department at least four weeks prior to the event taking place by emailing street.parties@walthamforest.gov.uk.

EXPLORING THE BOROUGH ON FOOT



RESIDENTS ON A FEEL GOOD WALK IN WALTHAM FOREST

Feel Good Walks

Our Feel Good Walks are suitable for anyone to join and are free. They provide a great way for residents to get out and about, meet new people and explore some of the beautiful green spaces Waltham Forest has to offer.

Walks are led by trained volunteers and take place across the borough with options for shorter and slower-paced walks. Find out more by emailing feel.good@walthamforest.gov.uk or visiting ramblers.org.uk/go-walking/wellbeing-walks-groups/ramblers-wellbeing-walks-waltham-forest

Waltham Forest Wanders

Walking and cycling can both have huge benefits for physical and mental health, as well as the local environment. With this in mind, nine walking and cycling routes have been developed into a pocket-sized guide entitled ‘Waltham Forest Wanders’ to encourage people to walk and cycle more for health, transport and leisure and showcase the borough’s green spaces, towns, low traffic streets, museums, rich history and famous faces. The wanders provide a route for everyone, regardless of ability, levels of confidence or personal motivation for the journey. The routes will inspire residents and visitors to discover their local neighbourhood, increase physical activity and develop a peer support network along the way.

The guide is available to download here:

walthamforest.gov.uk/parking-roads-and-travel/walking-and-cycling/walking and is available as a hard copy in Waltham Forest Libraries and on request by emailing cycling@walthamforest.gov.uk.



IMAGE OF THE WALTHAM FOREST WANDERS WALKING AND CYCLING TRAILS

CYCLING WITH CONFIDENCE

Cycle training

We provide cycle training to anyone who lives, works or studies in Waltham Forest free of charge. The cycle training programme ranges from individual one-to-one sessions, group sessions or in schools for all ages. We have seen a growing demand for cycle training: in 2023 a total 3,618 participants attended cycle training sessions to gain the confidence and skills they needed.

Cycle training sessions are catered to the needs of participants to help them progress at their own pace confidently. Participants can range from a complete beginner wanting to try cycling on two wheels for the first time to more experienced people wanting to trial a specific extended route with an instructor. In 2023, 990 individual (1 to 1) sessions took place for both adults and children. Sessions can take place at a time and place that is suitable for the participant and cycles can be provided if required at Leyton Jubilee Park and Lloyd Park.

With our partner Cycle Confident we deliver the following types of cycle training sessions as part of the Bikeability curriculum:

- Learn to ride
- Level 1
- Level 2
- Level 3

Every school in Waltham Forest is entitled to receive free cycle training for all pupils in one year group. In 2023, 2,167 pupils from 43 schools participated in cycle training and learnt valuable skills for life in how to cycle safely and confidently.

For further details visit:

cycleconfident.com/sponsors/waltham-forest



CYCLE TRAINING IN LEYTON JUBILEE PARK, E10

“The instructor was wonderful, it was a pleasure to learn cycling at my age and I am happy that Waltham Forest provide such a wonderful service”

CYCLE TRAINING PARTICIPANT

Cycle schools

Cycle schools take place during school holidays to keep children active and help them learn and develop their cycling skills. These sessions are open to young people aged 4-18 that live or attend a school in Waltham Forest.

In 2023, the sessions took place over the Easter holidays, May half-term, the summer holidays and October half-term. The locations of these cycle schools were George Monoux College, Leyton Jubilee Park, Rolls Sports Ground and Buxton School and a total of 461 children took part.



PUPILS TAKING PART IN CYCLE TRAINING IN LEYTON JUBILEE PARK, E10

Community cycle loan scheme

Anybody who lives, works or studies in Waltham Forest can loan a bike through our community cycle loan scheme. The scheme is comprised of over 30 standard bikes and 12 cargo bikes. Bikes are available to loan for up to a month in exchange for a small refundable deposit. Due to high demand the cargo bikes are on loan for up to two weeks.

Standard bikes

Our fleet of standard bikes are used by members of the community for a range of reasons. In 2023 participants loaned a standard bike for reasons such as; taking part in our annual cycling event Tour de Waltham Forest (more information can be found on page 22), practicing skills learnt during cycle training sessions, trialling cycling as part of a commute for the first time, or to exercise more.

Cargo bikes

In 2023 we joined in with the 'Cargo Revolution' and signed up to the 'Cargo Revolution Borough Charter'. One of the actions of the Charter is to make it easier for residents to switch to cargo bikes. Cargo bikes are a great alternative to a private motor vehicle, they can be used for a range of purposes; taking children to school, moving cargo or even Christmas trees.

Our fleet is comprised of 12 cargo bikes and can be used for a range of reasons. The fleet includes:

- Babboe Dog-E (New for 2023)
- Babboe E-Curve x 2
- Babboe Mini-E
- Bakfiets
- Christiania Classic x 2
- Christiania Event
- Christiania Taxi
- Douze
- Nihola
- Raleigh Pro-E

Our cargo bikes are very popular and at peak times residents may need to join a waiting list to loan one.



THE BABBOE DOG-E CARGO BIKE BEING TRIALLED BY A LOCAL CANINE RESIDENT

How to get involved

Over 450 people loaned a bike in 2023, and with the fleet on loan for a total of 9,639 days it was the busiest year ever for the scheme! Participants have loaned bikes to cycle to work, take children to school and complete cycle rides, including Tour de Waltham Forest and Ride London 100!

When participants return their loan bike we ask them to complete an online survey. The results of the survey helps us to understand how our bikes are being used and how the scheme can be improved. Feedback from participants in 2023 included:

"I think it's a brilliant scheme and I'm grateful to have a low carbon, useful option available to me when I need it!"

"It's a really great scheme and has really helped us on deciding what cargo bike to buy for our family."

"The positive benefits to my mental health were unexpected and most welcome."

For information and to book a bike through the community cycle loan scheme email cyclehire@walthamforest.gov.uk or call **020 8496 3000**.



DANIEL RECEIVING HIS 'TRY BEFORE YOU BIKE' CYCLE

Try Before You Bike

In 2020 we launched the 'Try Before You Bike' scheme in partnership with Peddle My Wheels. The scheme has a range of bikes that are available in monthly instalments:

- Standard bikes from £30
- Adapted cycles from £75
- Electric assist bikes from £75
- Cargo bikes from £200

Participants pay monthly until they have either paid off the value of their cycle or if they decide to return the cycle. There are no deposits or hidden fees and the scheme includes a free delivery service, lights, a lock and mudguards. In 2023 22 residents started the scheme.

For further details visit peddlemywheels.com/try-before-you-bike

Try Out Walking and Cycling Day

On Saturday 25 March we hosted a 'Try Out Walking and Cycling Day' in Leyton Jubilee Park. The aim of this free event was to encourage people to think about walking and cycling out of the box- cycling is not just two wheels!

The day also promoted the benefits of walking and cycling (physical, mental, economic, and sustainable) and how active travel can be used for leisure, exercise or a mode of transport. Residents were provided with opportunities to find out more about the initiatives which are available around the borough as well as providing the necessary connections with organisations for them to get involved.

The days saw the following activities and initiatives and organisation in attendance:

All Ability Cycling Club: please see page 23 for further information on All Ability Cycling Club.

Cargo Bike Try Out Area: a range of our cargo bikes were available at this event for residents and visitors to trial; this was the most popular activity on the day!

CarryMe Bikes: CarryMe promoted their Family Cycling Library project which gives families a chance to look at options of how to carry their children by cycle and try out different kit on their cycles.

Dr Bike: please see page 21 for further information on Dr Bikes.

JoyRiders Britain: JoyRiders engaged with the community, promoting their offer of led rides for families and Bikeability training.

Outspoken Cycles: Outspoken Cycles bought along cycling related activities, including a pedal-powered smoothie and Scalextric.

Leyton Orient Trust (LOT): LOT led short guided walks to provide a taster of their catalogue of guided walks taking place weekly across the borough.



ALL ABILITY CYCLING CLUB IN LEYTON JUBILEE PARK, E10



CARGO BIKE TRY-OUT AREA IN LEYTON JUBILEE PARK, E10



A DR BIKE SESSION TAKING PLACE AT FELLOWSHIP SQUARE, E17

Dr Bikes

We provide regular free Dr Bike sessions at various locations across the borough in partnership with Cycle Confident. During a Dr Bike session our mechanics will check everything on your cycle from wheels, brakes, gears and tyre pressure to lights, rack, pedals, saddles and more for free. Any minor adjustments they can make to the cycle they do there and then, and anything they can't fix on site they will let you know exactly what needs doing and a rough guide to what it should cost at a cycle shop.

Over 2023 we hosted 81 Dr Bike sessions across which our mechanics serviced 1,822 bikes! Nine of these sessions took place in August during the summer holidays and six sessions in November for Road Safety Week.

You can find Dr Bikes on the first Saturday of every month at Walthamstow Central in front of Walthamstow Library from 10am to 4pm. Our other regular locations of Dr Bikes include Albert Crescent in Chingford Mount, Church Lane in Leytonstone, Signal Walk in Highams Park and Wood Street and Fellowship Square in Walthamstow.

We are looking for ways to improve the locations selected for sessions; if you have any suggestions for locations, please get in touch with us by emailing cycling@walthamforest.gov.uk.

Cycle maintenance courses

We offer cycle maintenance courses in partnership with Cycle Confident at locations across the borough. Sessions in 2023 were held at Walthamstow Pumphouse Museum, Langthorne Park, Hale End Library, Lea Bridge Library and Wood Street Library.

A cycle maintenance course is very hands on, and residents can learn how to keep their cycle in a good condition by learning how to fix a punctures, index gears, adjust brakes and lubricate cycle chains correctly. This year there were eight cycle maintenance courses and 66 people attended these!

Sessions can be booked on the Cycle Confident website: cycleconfident.com/sponsors/waltham-forest/



RESIDENTS LEARNING HOW TO MAINTAIN THEIR OWN CYCLES

"The instructors were brilliant, friendly, super thorough and helpful. They helped us understand our bikes with easily digestible information, and then gave us an opportunity to practice, whilst still supporting if we needed it. Would love to do another course, and I've already been recommending it to my colleagues."

PARTICIPANT OF A CYCLE MAINTENANCE COURSE

Tour de Waltham Forest

On Sunday 11 June Tour de Waltham Forest returned for 2023. With routes starting and finishing in Leyton Jubilee Park, **666** participants cycled a total distance of **11,437km** – which is equivalent to three full Tour de Frances!

Participants could choose from one of four routes that took in many of the borough’s green spaces, protected cycle tracks and quieter roads. This included nearby Hackney Marshes, Lea Bridge Road cycle track, Walthamstow Village and Hollow Ponds. The routes varied in length with the shortest route, Hackney Hop being 7km in length, and the longest route at 25km in length was the Leytonstone Loop.

Each route could be cycled completely self-guided with participants following signage, or cycled as a led-ride following ride leaders from Cycle Confident.



PARTICIPANTS SETTING OFF ON THEIR CYCLE RIDE FROM LEYTON JUBILEE PARK, E10

For roughly two-thirds of participants, the 2023 event was the first time they attended a Tour de Waltham Forest and well done to all for completing the rides in 31°C – one of the hottest days of 2023!

Back in Leyton Jubilee Park there were activities so that participants could take part in before or after their route. There was also food and drink from London Braai Company and St Best Jamaican.

This year the activities included:

- Bikeworks ride
- side-by-side taxi
- Carry Me
- Dr Bike
- Enjoy Waltham Forest stand
- JoyRiders
- Pedal powered Scalextric
- Pedal powered smoothie bike
- Pedal powered Juke Box



COUNCIL OFFICERS PROMOTING ACTIVE TRAVEL INITIATIVES

Following the event we asked participants to complete a feedback survey, responses received included:

“I have lived in Walthamstow a long time and never discovered some areas. I will now be encouraging friends and family to do the same routes as a weekend activity.”

PARTICIPANT ON THE 18KM WALTHAMSTOW WHEEL

“My 10yr old LOVED the events on in the park after making a smoothy, playing music and getting his name up on the leader board, it was a lovely afternoon out.”

PARTICIPANT ON THE 7KM HACKNEY HOP

“We really enjoyed our cycling day out as a family and it’s given us new ideas of other cycles we could go on!”

PARTICIPANT ON THE 14KM COPPERMILL CIRCLE

CYCLING FOR ALL

All Ability Cycling Clubs

We believe that there is a cycling experience available to everyone. In collaboration with our Short Breaks Team, All Ability Cycling Clubs provide a fleet of adapted cycles that cater for a range of needs. The fleet includes relaxed tricycles, recumbents, wheelchair cycles, hand-cycles, side-by-side cycles and many more. The sessions take place every Saturday from 10am to 12pm with the location alternating between Leyton Jubilee Park and Higham Hill Park, providing access to cycling to all regardless of confidence or ability.

In 2023, **over 650 people** attended an All Ability Cycling Club. Next year we will continue with the popular weekly sessions and explore additional sessions during half terms to keep up with demand.



PARTICIPANTS ENJOYING THE SIDE-BY-SIDE CYCLE IN CHURCH LANE CAR PARK, E11

“I’m 89, the Ride Side-by-Side takes the pressure off my joints, which is good for my Osteoarthritis. I’m amazed by how skilful my pilot is”

PASSENGER OF THE SIDE-BY-SIDE TAXI

Bikeworks’ side-by-side taxi

Alongside All Ability Cycling Clubs, Bikeworks also provide a ‘Ride Side-By-Side’ cycle service. In 2022 Bikeworks received funding from the Department for Transport’s (DfT) Tackling Loneliness with Transport Fund to deliver a ride side-by-side cycle taxi service in seven London boroughs, including Waltham Forest. The project provides an inclusive free taxi and journey service, primarily targeted towards older people, people who have mobility or visual impairments, and/or those facing social isolation. The cycle taxi can accommodate up to three passengers at a time so multiple rides or journeys can take place.

The service launched in August 2022 and has collected 335 residents and transported them to local businesses and amenities, medical appointments, green spaces or simply enjoy a leisurely ride around in the fresh air.

There are many benefits to the ‘Ride Side-by-Side Cycle Taxi’ service as the service enables people with health conditions and restricted mobility the opportunity to enjoy and partake in gentle exercise (electric-assist cycling where pedalling is optional!), be in a social group and carry out trips for utility and leisure. The DfT funded scheme ended in summer 2023.



PASSENGERS ENJOYING THE SIDE-BY-SIDE TAXI IN CHURCH LANE CAR PARK E11 AND LEYTON JUBILEE PARK E10



CYCLE PARKING

Bikehangars

Our residential cycle parking programme has continued to grow in 2023, with 122 new units introduced providing an additional 732 spaces! This growth is in line to meet our target of 1,200 Bikehangars in Waltham Forest by March 2026.

By the end of 2023 there were **763 Bikehangars** in use across the borough, providing convenient and secure cycle storage for **4,578 residents**.

Bikehangar membership remained at £35 per year in 2023 which is one of the lowest levels across all London boroughs, continuing our commitment to making cycling as affordable as possible.

Despite our record number of Bikehangars, the waiting list for a space has continued to grow, with a net increase of 253 residents in December 2023 compared to December 2022.



A NEWLY INSTALLED BIKEHANGAR

Whilst there are currently 4,199 residents on the waiting list, in 2024 we aim to increase the number of Bikehangars by 180 units which will support an additional 1,080 residents.

Cycle Hubs

After a hiatus of six years, in 2023 we opened **four new Cycle Hubs**, bringing the total to 11 Cycle Hubs around the borough! These are located at Blackhorse Road Station (x2), Highams Park Station and Chingford Station. In total there are now **764 spaces** across our 'Cycle, Park and Go' network, an increase of 192 spaces since 2022.

Membership continued to cost £35 per year for access to all 11 Hubs, and each Hub features two-tiered power assisted cycle stands, key fob entry with CCTV, 24/7 help points and information boards. All of the Cycle Hubs are located at key transport interchanges which allows members to cycle part of their journey, lock their cycle up securely, and then continue via public transport. Due to the nature of their town centre locations, many members also use the Cycle Hubs for short-term cycle parking when visiting shopping and leisure amenities.



HIGHAMS PARK CYCLE HUB, E4



BLACKHORSE A CYCLE HUB, E17

Membership at the end of 2023 was 17% higher than at the end of 2022, which indicates a potential growth in commuting again following the Covid-19 pandemic. 392 new members joined the network, including 72 in September following our promotional offer to celebrate World Car Free Day.

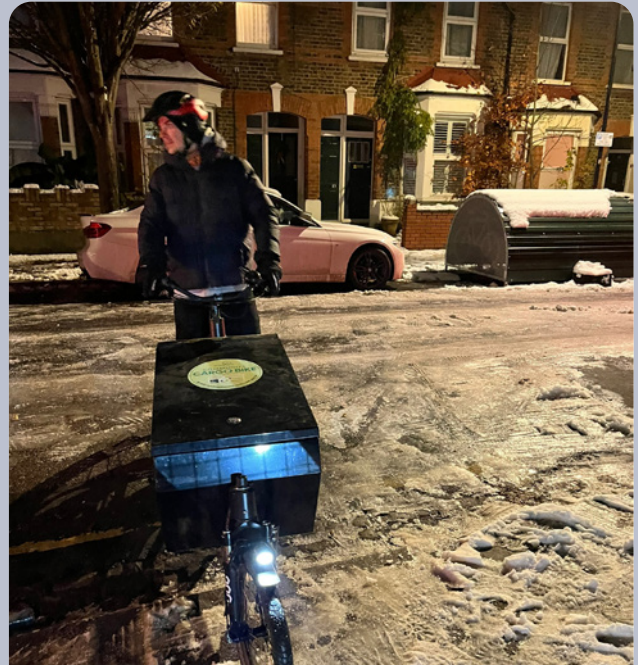
WORKING WITH BUSINESSES

eCargo Bike loan scheme

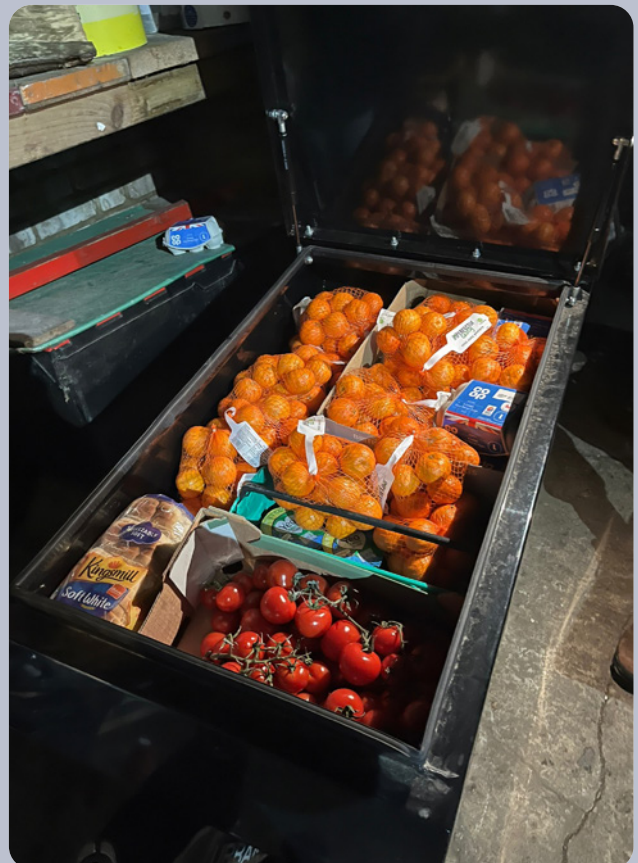
In 2021 we were successful in securing £148,000 funding from the Department for Transport’s Cargo Bike Grant Fund which is administered by the Energy Saving Trust. The funding was used to purchase 21 eCargo bikes and seven trailers to support local community projects, businesses and Council services in a drive to shift a significant proportion of short local journeys from motor vehicle to cycle.

A range of sustainability-focused community groups and social enterprises have incorporated eCargo Bikes into their day-to-day work supporting Waltham Forest residents, becoming exemplars to businesses and residents and showcasing the versatility and feasibility of using eCargo bikes as transport options. The organisations that have utilised eCargo bikes and trailers in 2023 are:

- **OrganicLea:** OrganicLea grow and harvest high quality, organic fruit and vegetable in local allotments and deliver fresh, seasonal bags of produce across Waltham Forest via cargo bike.
- **The Hornbeam:** The Hornbeam are an inclusive and people-focused organisation that host several unique projects promoting equity, mindfulness, social inclusion and sustainability. The organisation utilises a cargo bike to support the ‘Food Distribution Network’, where surplus food from suppliers that would otherwise go to landfill is collected, sorted and redistributed to a network of local projects including food banks and charities supporting residents across the borough.
- **Forest Recycling Project:** Forest Recycling Project works to promote a greener and more inclusive Waltham Forest. The project comprises of reclaiming, repurposing and affordably reselling wasted material in particular paint, scaffolding wood and fabrics. Otherwise, these materials would be filling up and polluting local landfill sites and this project encourages a circular economy. Highlights of their work that employs the eCargo bikes and trailers include creating zero-waste planters and raised beds from reclaimed scaffolding boards, supporting Walthamstow Tool Library, loaning tools to local businesses and residents with the mission to make tools both accessible and affordable, while reducing the need to purchase new tools, and their reclaimed paint service.



THE HORNBEAM USING THE E-CARGO BIKES TO DISTRIBUTE IN ALL WEATHERS!





TRANSITION LEYTONSTONE USING THE E-CARGO BIKES TO DISTRIBUTE SURPLUS FOOD



- **HEET:** HEET is commissioned by Waltham Forest Council to run a scheme to reduce fuel poverty and carbon emissions in the borough, a project primarily targeted at fuel-poor households and individuals living with a long-term health condition or disability. HEET provide free energy saving advice and fit energy saving measures for eligible households for free of charge. The cargo bikes have enabled the organisation to shift a proportion of their operative's journeys from vans to zero-emissions.
- **Transition Leytonstone:** Transition Leytonstone operate a Community Fridge project that helps connect people across the borough with their wider community whilst accessing nutritious, surplus food and reducing waste. The food is donated by a range of local businesses of all sizes, as well as individuals, and the eCargo bike supports these logistics. The Fridge is part of the Hubbub Community Fridge Network, one of the world's largest community fridge Networks with over 150 community fridges running around the UK.

"We are using the bike almost every day for the following: food pickups and deliveries to Leytonstone Community Fridge; delivering any surplus from our Fridge stall to Courtney Homeless Shelter, Cann Hall Mosque Food Bank and the 7th Day Adventists Food Bank. Otherwise, it's tidy up time with trips to the recycling centre at Gateway (flattened cardboard boxes) and returning empty crates to Hornbeam, M&S, Sainsburys and Getir. We utterly depend upon this cargo bike for the smooth running of our operations and are seeking more experienced riders to join us."

DIANA, PROJECT LEAD,
TRANSITION LEYTONSTONE

ZED Waltham Forest

ZED Waltham Forest is a partnership between Zedify and Waltham Forest Council. This partnership utilises Zedify's urban delivery logistics experience and technology platform and Waltham Forest's cycling infrastructure.

ZED have also benefitted from e-Cargo bikes funded via the Department for Transport's Cargo Bike Grant, namely Urban Arrows and Icenis trikes, which enable them to carry out deliveries and logistics on behalf of local, national and international businesses alongside Council services. The access to further bikes has enabled ZED to increase their capacity, support the growth of local businesses, and contribute towards our net-zero targets.

In 2023 ZED Waltham Forest continued to provide a vital zero-emissions delivery service within the borough and beyond. During the year ZED carried out a staggering **86,238 deliveries** on behalf of 24 organisations. In total ZED's riders covered an impressive 329,140km, resulting in a saving of approximately 112.5 tonnes CO_{2e} emissions.

Items that were delivered include locally baked goods, plant-based zero-waste takeaways, museum artifacts, school lunches and even materials for our highways contractor, JB Riney.



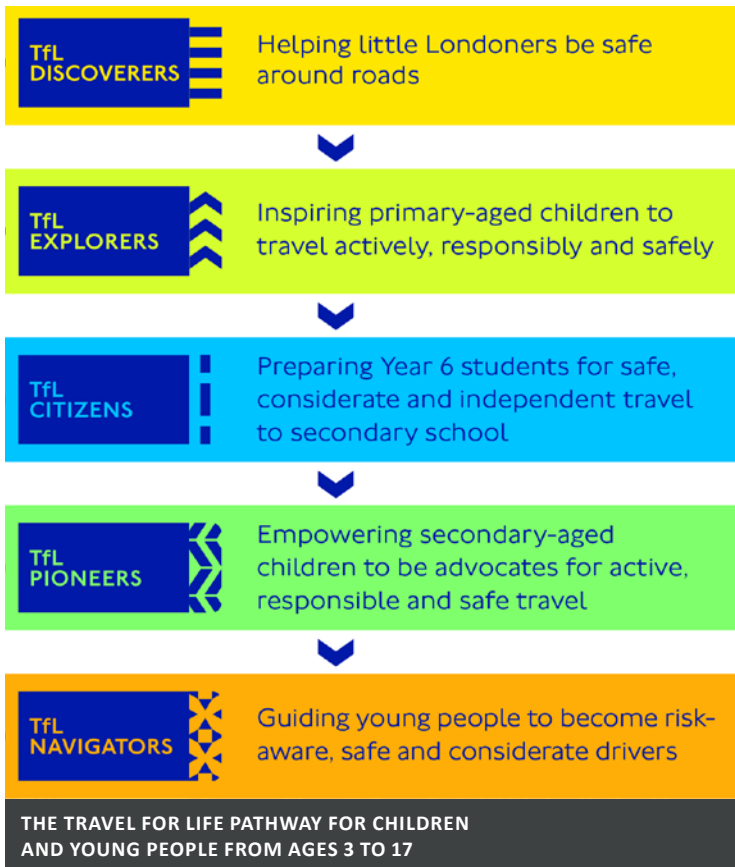
WORKING WITH SCHOOLS

Travel for Life

Travel for Life is TfL's accreditation programme that offers a series of free educational programmes to schools and education settings (from ages 3 to 17) across London. It encourages schools to encourage and champion active and sustainable travel and incorporate road safety education and environmental learning into the curriculum. The overarching goal of the programme is to increase active and sustainable travel options when travelling to and from school, reduce car use and improve safety.

Formerly, known as STARS (Sustainable travel: Active, Responsible, Safe), TfL launched the rebranded programme at Hillyfield Primary Academy in Walthamstow in September bringing together each of the programmes formerly known as Road Safety Club, STARS, Safety and Citizenship and TravelSmart, under one new umbrella programme. London's Walking and Cycling Commissioner Will Norman met with staff and pupils at the Gold-accredited academy to see first-hand the difference the Travel for Life educational programmes have made to the school.

The programme awards gold, silver, bronze or engaged accreditation based on the number of activities a school or education setting has completed.



The benefits of being Travel for Life accredited are:

For pupils:

- Improves pupils' emotional health and wellbeing
- Contributes to pupils' 60 minutes a day of physical activity
- Increases attendance and attainment
- Builds young people's influencing skills
- Encourages healthier travel behaviours and habits such as walking, kick-scooting and cycling as travel modes.

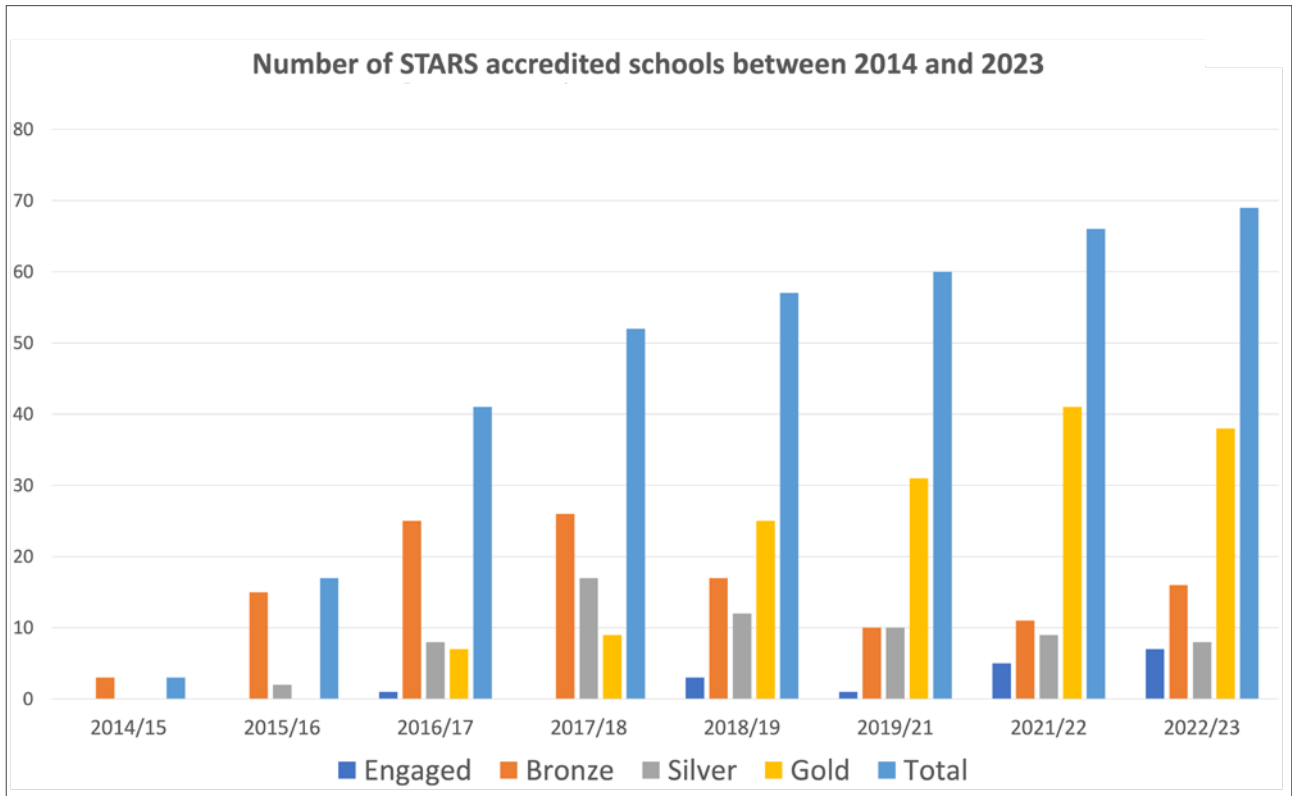
For the school:

- Develop a School Travel Plan providing solutions to the school's travel issues
- Create positive travel behaviour change and provides access to funding
- Bespoke professional guidance and support from the local borough
- Raises the profile of the school, help gain external recognition and contribute to Healthy Schools London Awards Programme.

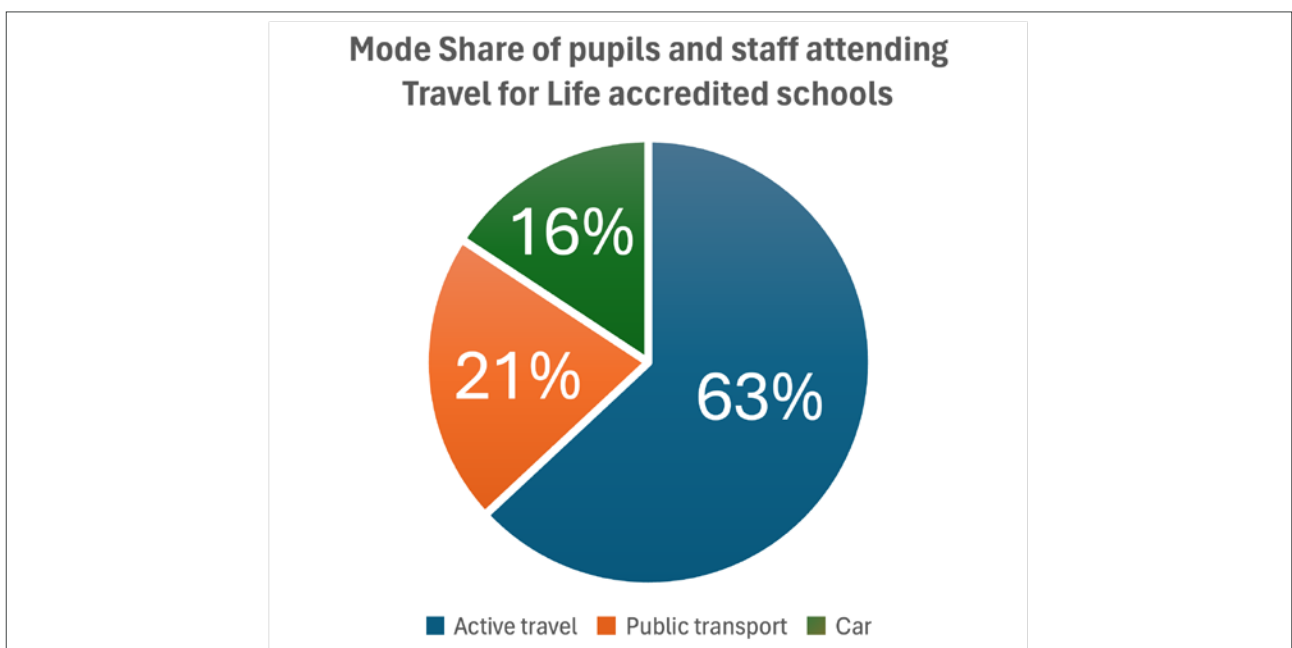
For the wider school community:

- Reduce congestion around the school site and improve air quality
- Encourage positive travel behaviour change in parents/carers and local residents
- Help develop relationships with community stakeholder groups.

In 2023, Waltham Forest had 69 accredited schools and educational settings, the highest number to date in Waltham Forest!



Across the 69 accredited schools in 2023 over 30,000 pupils and staff took part in a ‘hands up’ survey which asked how they currently travel to school and how they would prefer to travel. The graph below shows that 63% of pupils travel actively to school and in total 84% of pupils travel sustainably!



Top School Awards

Four schools won six awards at TfL's Top School Awards which were held at the Kia Oval on 22 May 2023. The Top School Awards recognise the achievements made in school to encourage and promote safe and active travel through the Travel for Life Programme and the people making it happen!

- **Top Newcomer Award** – Chase Lane Primary School E4 won for the North region and was awarded the overall Top Newcomer in London Award
- **Biggest Impact Award** – Davies Lane Primary School E11 won for the North region
- **Active Travel Heroes Award** – Downsell Primary School E15 won for the North region
- **Top School Champion Award** – Joseph Clarke School E4 won for the North region and was awarded the overall Top School Champion in London Award

69

schools in Waltham Forest are engaged in the Travel for Life programme.

84%

of pupil & staff at Travel for Life accredited schools travel to school by active and sustainable modes.

55%

of schools participating in the Travel for Life programme are gold accredited.



PUPILS CYCLING AND KICK-SCOOTING

Schools and their accreditation levels in 2023

Ainslie Wood Primary School	Bronze	Longshaw Primary Academy	Gold
Azhar Academy Primary School	Gold	Mayville Primary School	Bronze
Barclay Primary School	Gold	Mission Grove Primary School	Gold
Barn Croft Primary School	Gold	Norlington School and 6th Form	Gold
Big Creative Independent School	Engaged	Normanhurst School	Gold
Buxton School	Bronze	Oakhill Primary School	Bronze
Chapel End Infant School and Early Years Centre	Gold	Our Lady and St George's Catholic Primary School	Gold
Chapel End Junior Academy	Gold	Parkside Primary School	Gold
Chase Lane Primary School	Gold	Riverley Primary School	Gold
Chingford CofE Primary School	Bronze	Roger Ascham Primary School	Silver
Connaught School for Girls	Gold	Selwyn Primary School	Gold
Coppermill Primary School	Gold	Sir George Monoux College	Bronze
Davies Lane Primary School	Gold	South Grove Primary School	Gold
Dawlish Primary School	Bronze	St Joseph's Catholic Infant School	Bronze
Downsell Primary School	Gold	St Joseph's Catholic Junior School	Bronze
Eden Girls' School Waltham Forest	Bronze	St Mary's Catholic Primary School	Bronze
Edinburgh Primary School	Gold	St Mary's CofE Primary School	Silver
Emmanuel Community School	Gold	St Patrick's Catholic Primary School	Engaged
Forest School	Gold	St Saviour's Church of England Primary School	Bronze
Frederick Bremer School	Engaged	Stoneydown Park School	Gold
George Mitchell School	Bronze	Sybourn Primary School	Gold
George Tomlinson Primary School	Gold	The Jenny Hammond Primary School	Bronze
Greenleaf Primary School	Gold	The Winns Primary School	Gold
Gwyn Jones Primary School	Silver	The Woodside Primary Academy	Gold
Handsworth Primary School	Silver	Thomas Gamuel Primary School	Bronze
Heathcote School & Science College	Engaged	Thorpe Hall Primary School	Silver
Henry Maynard Primary School	Gold	Walthamstow Montessori School	Gold
Hillyfield Primary Academy	Gold	Walthamstow Primary Academy	Gold
Holy Family Catholic School	Gold	Whitefield Schools	Engaged
Joseph Clarke School	Gold	Whittingham Primary Academy	Bronze
Kelmscott School	Gold	Willow Brook Primary School Academy	Gold
Lammas School and Sixth Form	Engaged	Willowfield School	Silver
Lantern of Knowledge Secondary School	Silver	Woodford Green Primary School	Silver
Leyton Sixth Form College	Engaged	Yardley Primary School	Gold
Leytonstone School	Gold		

School Streets

School Streets are an innovative initiative to improve air quality, make it easier and more enjoyable for young residents to walk, kick-scoot and cycle to school, and create a safer, healthier, and more pleasant environment. Restricting traffic movements around the school aims to lead to an improvement in road safety, a reduction in anti-social behaviour from inconsiderate parking and dangerous manoeuvres, improved air quality due to reduced vehicle engine idling, and subsequently, more active and healthier lifestyles for pupils, parents, staff, residents and employees of local businesses.

**In 2023 an additional two School Streets were introduced in Waltham Forest!
School Streets are now in place at the following schools:**

- | | | | |
|--|---|--|--|
| 1. George Mitchell Primary School | 6. Davies Lane Primary School | 12. St Mary's CofE Primary School | 18. Connaught School for Girls |
| 2. Willow Brook Primary Academy (Marsh Lane School Street) | 7. George Tomlinson Primary School | 13. Woodside Primary Academy (Forest Site and Bridge Site) | 19. St. Saviour's Church of England Primary School |
| 3. St Joseph's Catholic Infant School (Marsh Lane School Street) | 8. Buxton School | 14. Dawlish Primary School | 20. Riverley Primary School |
| 4. Henry Maynard Primary School | 9. Hillyfield Primary Academy (Hill Site and Park Site) | 15. Newport School | 21. Downsell Primary School |
| 5. The Jenny Hammond Primary School | 10. South Grove Primary School | 16. Holy Family Catholic School | 22. Mayville Primary School – New for 2023 |
| | 11. The Winns Primary School | 17. Our Lady and St Georges Catholic Primary School | 23. Greenleaf Primary School – New for 2023 |

School Streets have led to a modal shift from private car usage to active modes of transport such as walking, cycling, and kick-scooting, therefore reducing road congestion and improving road safety.

Case studies

At George Tomlinson Primary School in Leytonstone there has been a 19% increase in the number of pupils walking, cycling and kick-scooting to school since the School Street was introduced in September 2020, with 79% of pupils now travelling actively to and from school.

The number of pupils travelling actively to Downsell Primary School in Leyton has increased by 15% since the School Street was introduced in October 2022 to 87%, compared to 2018/19. Whilst there are still some vehicles driving along Downsell Road during the operating hours of the School Street, on the observed days there was an 89% reduction in these which is contributing to improved road safety and air pollution levels outside of the school.



SCHOOL STREET SIGNAGE AT DOWNSSELL PRIMARY SCHOOL, E15

There are now 22 School Street zones in Waltham Forest covering 23 schools.

Over 16,000 pupils now attend a school in a School Street zone.

On average 80% of pupils walk, cycle, kick-scoot to school after a School Street is introduced.



PUPILS TAKING PART IN MINI TOUR DE WALTHAM FOREST 2023



Mini Tour de Waltham Forest

Primary school pupils from 20 schools across the borough came together in Leyton Jubilee Park on Wednesday 14 June to enjoy a day of sustainable transport related activities, and to compete in the annual inter-school cycling race. In total, 160 pupils from Years 5 and 6 participated across the day. As well as racing, they engaged in a circuit of activities including 'cycle sprints', 'pedal powered scalextric', and educational sessions on cycle maintenance, road safety and air quality.

Congratulations to pupils from Barclay Primary School and Stonydown Park Primary School for finishing first on the leaderboards for the morning and afternoon sessions!

Teen Tour de Waltham Forest

The Lee Valley VeloPark was host to cycle racing and fun activities on Tuesday 4 July as 36 Year 7 pupils from six Waltham Forest secondary schools competed for their school by taking part in a range of sustainable transport activities, culminating in an inter-school race. The activities on offer included a 'cycle skills zone' delivered by Cycle Confident cycling instructors, a tour of Queen Elizabeth Olympic Park and a cycle maintenance taster session.

Well done to our 2023 'winners' The Lammas School who won Gold, Leytonstone School who won Silver and Frederick Bremmer School who won Bronze!



PUPILS TAKING PART IN TEEN TOUR DE WALTHAM FOREST 2023



WALK TO SCHOOL WEEK COMPETITION ENTRIES FROM PUPILS OF GWYN JONES PRIMARY SCHOOL (LEFT) AND WOODFORD GREEN PRIMARY SCHOOL (RIGHT)

Walk to School Week

This year Walk to School Week ran from 15-19 May, and we ran a five-day challenge aiming to get pupils and parents/carers to travel actively to school, to promote happier and healthier children, less congestion and cleaner air – in total **over 26,000 pupils took part from 57 primary schools!**

Each pupil was given a resource card and stickers and were awarded each day they walked to school or walked a mile (for those who could not walk to school). Daily walking challenges were introduced to highlight the benefits of walking and to conclude the week schools were invited to draw their favourite outdoor space in Waltham Forest alongside a sentence or two describing why they have chosen that place. Highly commended entries came from a pupil at Woodford Green Primary school who drew the Walthamstow Wetlands, a pupil at Gwyn Jones Primary school who drew Hollow Ponds and a pupil from St Joseph's Catholic Junior School who drew Leyton Jubilee Park.

SAFER STREETS

Road Safety in Schools

Waltham Forest is committed to engaging children and young people with road safety as we believe it is important to teach children about being safe on the roads when travelling via all modes, embedding good practice and positive habits from an early age and guiding their long-term behaviour as road users.

Road safety and the perception of safety is a big factor in whether children and young people are able to walk and cycle to school, to their local green space or to see friends, and therefore affects their ability to be healthy and socially active.

To reach younger pupils in 2023 we worked with For2Feet to deliver over 20 sessions of pedestrian safety, kick-scooter training and Road Safety Shows to KS1 and KS2.

For2Feet - pedestrian safety training: Pedestrian safety training is a practical roadside training activity that identifies local road dangers and teaches children safe road crossing strategies. Training covers the correct use of pedestrian crossings, crossing at junctions, driver and

pedestrian distractions and the dangers of crossing at parked cars and driveway hazards. It prepares children for future independent journeys that they will make in Years 4-6. In schools that have School Streets or are located within low traffic neighbourhoods, the training promotes and advises on their advantages and safe usage.

For2Feet - kick-scooter safety training: Kick-scooter training is also a practical roadside training activity, taking place in the playground and on pavements the children typically use to kick-scoot to school. The syllabus teaches children to check their scooter is safe, what to do if they get tired, how to slow down, stop and deal with an emergency situation, pavement etiquette with pedestrians, common pavement dangers and hazards, cars reversing from driveways and road crossing with a kick-scooter.

For2Feet - road safety shows: For2Feet have developed the 'Green Man Red Man' road safety show which uses themes not usually associated with road safety to engage the children through a theatrical performance whilst instilling important road safety messages.



Junior Citizens: Junior Citizens took place across the week commencing 19 June and focused on Year 6 pupils transitioning to secondary school; the aim of the event was to provide a holistic approach to safe and independent travel and living. 21 primary schools took part in Junior Citizens, with over 1,200 pupils attending Leyton Orient Football Club over the week. Alongside the London Fire Brigade, the Metropolitan Police, Transport for London and other key organisations attended and provided engaging activities for pupils to take part in.



School Crossing Patrols: School Crossing Patrols help children and adults cross the road safely on their way to school if they are walking, cycling or kick-scooting. Waltham Forest has School Crossing Patrols at eight schools across the borough. The School Crossing Patrols also work closely with the schools, hosting assemblies as well as educating the whole community while carrying out their daily duties.



PUPILS OF RIVERLEY PRIMARY SCHOOL TAKING PART IN A JUNIOR ROADWATCH SESSION

Junior Roadwatch: As part of Road Safety Week, Riverley Primary School were given the opportunity to take part in speed awareness sessions with Police Officers from the Metropolitan Police Service’s (MPS) Roads and Transport Policing Command, which is jointly funded by TfL and the MPS, to educate drivers about the dangers of speeding near their school.

Drivers caught speeding were pulled over by Police Officers and given the option of receiving an enforcement option- either a fixed penalty fine and points on their licence or attending a speed awareness course- and being reported for speeding or, if drivers are deemed suitable, speaking to the children. If they take this option, the driver will receive an educational message from the children and the Council staff member.

The primary school pupils asked questions such as “Why do you think the speed limit is 20mph on this road?” and “Are you aware of the consequences of speeding?”- encouraging the driver to reconsider the speed they were driving at.

Road Safety Week

Road Safety Week is an annual nationwide event aimed at raising awareness about road safety issues and promoting measures to reduce collisions and injuries.

Road Safety Week took place between 19 – 25 November and this year we organised five free Dr Bike sessions across the week where members of the public were able to turn up to the different locations and have their bikes checked over by experienced mechanics. We also handed out goodies such as bike lights, reflective slap-bands and hi-vis vests to further support the campaign and assist people travelling actively in being seen when travelling in the dark. In total over 300 sets of bike lights were handed out!



A RESIDENT COLLECTING HI-VIS GOODIES ON ARGALL AVENUE, E10



Community Roadwatch

We are working in partnership with the Metropolitan Police to run Community Roadwatch - a road safety initiative which aims to reduce speeding in residential areas.

Community Roadwatch gives local residents the opportunity to work side by side with their local police teams and use speed detection equipment to identify speeding vehicles in their communities. Warning letters will be issued where appropriate, and the information can help to inform the future activity of local police teams.

To take part in Community Roadwatch, or to suggest a residential area where there are community concerns around speeding, contact CommunityRoadwatch@met.police.uk stating the borough you live in. Your enquiry will be forwarded to your local Safer Neighbourhoods Team, who will be in touch.

20mph zones

The Council is committed to reducing speed limits on all residential streets in the borough to help improve road safety for all road users. This supports London's Vision Zero ambitions to eliminate deaths and serious injuries on London's roads.

By the end of 2023, the Council introduced 20mph Zones across 97% of the borough's road network so that all residential roads have a 20mph speed limit, and continues to introduce road safety measures to reduce vehicle speeds and injury collisions.

The reduced speed limits have been introduced through the implementation of 20mph zones with a variety of traffic calming measures to help reduce vehicle speeds. These measures include speed limit signage, road humps, speed tables, entry treatments, raised tables and road narrowing, as well as vehicle activated speed signs which illuminate to remind drivers of the speed limit and Copenhagen crossings to reinforce pedestrian priority at minor junctions.

A lower speed limit helps reduce the number and the severity of collisions; a person is about five times less likely to be fatally injured if hit at 20mph than at 30mph. In addition to improving road safety and reducing the number of collisions, the reduced speed limits promote the Council's priorities in helping people to live safe and healthy lives and in creating 15-minute neighbourhoods by providing safer and more accessible streets for residents to walk and cycle.



20MPH SIGNAGE ON HAWKWOOD CRESCENT, E4

Collision data

In 2022 there were 662 casualties reported as a result of collisions occurring in the borough, of which 72 were serious and 590 were slight. This was a 2.5% decrease compared to 2021 and a 30% decrease compared to 2014.

Of these 662 casualties, 104 were pedestrians and 129 were using cycles. Compared to 2021, this represents a 5% decrease in pedestrian casualties and a 16% decrease in cyclist casualties.

ELECTRIC VEHICLE CHARGING POINTS

We are developing a network of Electric Vehicle (EV) charging points that enables residents, businesses and visitors to adopt lower emission vehicles to help reduce transport related emissions. Our strategy includes a network of reliable and affordable charging points that encourages further uptake of low emission vehicles and caters for the needs of vehicle users. This year the number of EV charging points has grown and we have secured funding to continue the installation of charging infrastructure.

Public EV charging point network

There are now 700 EV charging sockets in Waltham Forest, with over 190 newly installed in 2023. Our network is comprised of a range of charging devices to cater for EV users needs.

Our public EV charging point strategy is providing residents, businesses and visitors the opportunity to adopt cleaner vehicles. By March 2025 we plan to install:

- 5.5kW standard charging points in lamp columns in all Controlled Parking Zones
- 7-22kW freestanding charging points within a short walk of 80% of properties
- 50kW rapid charging points at all town centres
- First 50kW rapid charging hub in the borough

On 29 August 2023 the Ultra-Low Emission Zone (ULEZ) expanded across all London boroughs. Vehicles that do not meet ULEZ emission standards must pay a daily charging if they drive within the zone, which will include most of Chingford and all of Leyton, Leytonstone and Walthamstow.

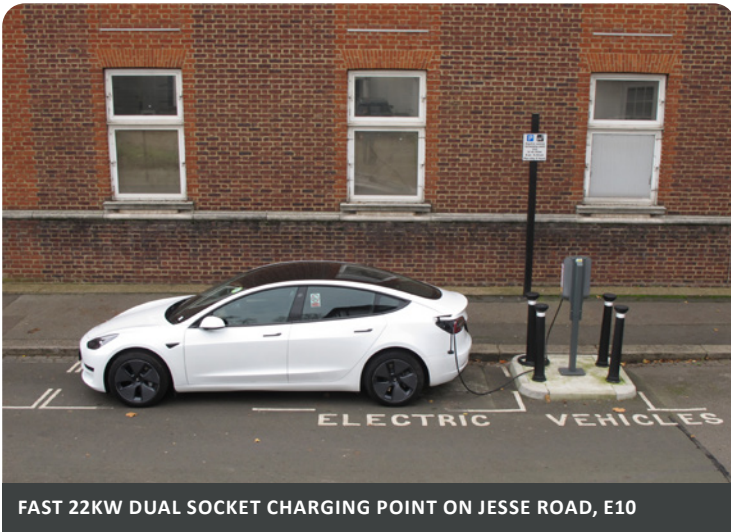
Research demonstrates that the main barrier to EV adoption is access to public charging points. Residents and businesses can request public EV charging points in their area by completing our online registration form on walthamforest.gov.uk/EV



FAST 22KW DUAL SOCKET CHARGING POINT ON BROOKSCROFT ROAD, E17

Standard lamp column charging points

We have installed 318 standard 5.5kW single socket charging points into lamp columns. These units are operated by ubitricity and are ideal for overnight charging. Last year we secured £1,042,000 funding from the Office for Zero Emissions Vehicles to increase the number of residential lamp column charging points to at least 700 by spring 2024.



FAST 22KW DUAL SOCKET CHARGING POINT ON JESSE ROAD, E10

Freestanding charging points

There are now 189 dual-socket fast charging points in the borough. 33 of these units are standard 7kW and operated by BP Pulse, and the remaining 156 units are fast 22kW and operated by Believ.

In partnership with Believ, two batches have been delivered in 2023. The first batch was delivered in early 2023 and was comprised of 29 dual-socket units across 18 roads. This batch included installing charging points at three existing Car Club Only bays to support operators to electrify their fleet. The second batch was delivered in the summer and was comprised of 52 dual-socket units across 35 roads.

Rapid charging points

By working with Transport for London four rapid EV charging points have been installed. The four rapid points are located at:

- Chingford – Richmond Road Car Park
- Leytonstone – Church Lane
- Walthamstow – High Street Car Park
- Walthamstow – Mission Grove Car Park

The four rapid charging points are operated by BP Pulse and can add 100 miles range to most EVs within 30 minutes. We plan to deliver our second batch of rapid charging points in 2024.



RAPID EV CHARGING POINT IN MISSION GROVE CAR PARK, E17

Local Electric Vehicle Infrastructure (LEVI) Pilot Fund

In Spring we were notified of our successful application to the LEVI Pilot Fund in partnership with the London Boroughs of Newham and Redbridge. The Office for Zero Emission Vehicles are providing £740,000 and the remainder is being match funded by the charging point operator Believ. The project is also being delivered in partnership with Enterprise and Motability. In total the LEVI pilot will see 60 sockets delivered across 15 sites in Waltham Forest.

By working with Motability we are reviewing the accessibility of our charging point site design. In November Believ hosted a workshop at Walthamstow’s Feel Good Centre to gather feedback from Motability, organisations representing disabled groups and transport experts. The feedback will be used to shape the sites being delivered in the LEVI Pilot fund and for the future.



FAST 22KW DUAL SOCKET CHARGING POINT

CAR CLUBS

We are working with operators to provide a car-sharing network that provides an easy, affordable and environmentally friendly alternative to owning a car. A Car Club vehicle is parked near where you live, ready for hire when you need it. Car Clubs help to reduce the number of private vehicles on the road as users often choose to give up a private vehicle or not to purchase a new car. This helps to free up parking spaces and reduce CO₂ emissions.

There are two types of Car Clubs operating in Waltham Forest: round-trip (fixed bay) and one-way (flexible vehicles). The round-trip Car Clubs are offered by Enterprise, Hiyacar and Zipcar with cars and vans parked on-street in their own designated bays. Vehicles need to be returned to their original parking bay when members have finished using them. There are **73 round-trip car club vehicles in the borough**.

Zipcar also offers Zipcar Flex, a flexible one-way car-share service. Members can pick up and drop off a vehicle in a number of London boroughs and airports.

Car Club vehicles are available 24 hours a day, seven days a week and can be booked by the hour, day or as long as members need them. Cars can be booked online, through the relevant app or by phone.

- Zipcar membership costs a one-off £15 joining fee or £6 a month for a membership, and cars start at £6 per hour.
- Enterprise Car Club annual membership costs from £7 a month for a membership and cars start at £9.53 per hour.
- Hiyacar membership is free and cars start at £4 per hour. Booking and insurance fees are charged separately.

We are working with Electric Vehicle (EV) charging point operators and car clubs to ensure operations are as green as possible. We have installed dual-socket charging points at the following Car Club locations:

- Bakers Avenue E17
- Elm Road E11
- Falmer Road E17
- Bulwer Road E11
- Essex Road South E11
- Goodall Road E11
- Edward Road E17
- Eve Road E11
- Morley Road E10

We are working to expand access to the Car Club network in Waltham Forest. To request a Car Club bay in your area, email carclubs@walthamforest.gov.uk



A HIYACAR CAR CLUB VEHICLE ON SELWYN AVENUE, E4

Voucher Trial

In 2023 we provided £50 vouchers for the three Car Club providers in the borough to a select number of residents, to encourage Car Club utilisation and the monitor the motivations for doing so. The vouchers would enable residents to set up an account and cover the cost of their first journey, with some providers including one year’s membership in the offer too.

190 vouchers were sent out to residents who had either expressed interest in trying a Car Club for the first time, or who we picked to try out a Car Club due to their home being in an optimum location to access transport links. A total of **891 miles** were driven using the credit from the vouchers, and 80% of users said that this experience would encourage them to use a Car Club again in the future.

We have been able to use this trial to understand how impactful financial incentives are to help residents discover the options available to them as part of a lower carbon and active lifestyle. This was felt when 66% of voucher recipients indicated that “I didn’t know what a Car Club was” or “I probably wouldn’t have booked a Car Club” before being invited to take part in the trial. 39% of all trial participants also went as far as to say that they would be ‘likely’ or ‘extremely likely’ to give up their car and use a Car Club instead, at some point in the future.



A ZIPVAN AVAILABLE FOR HIRE ON THE AVENUE, E4



WORKING WITH COMMUNITY GROUPS

Community Walking & Cycling Fund

The Community Walking and Cycling Fund was set up by Waltham Forest Council in 2019 to provide financial assistance to community groups who are working to encourage and facilitate residents of Waltham Forest to walk and cycle more, as well as discover other modes of sustainable transport and recreational activities to support healthier lifestyles. With walking and cycling being proven to improve physical health and mental wellbeing, increase social cohesion and reduce loneliness, the aim of the fund is to develop and support the work of community groups to reach more residents than the Council would ordinarily be able to, and to ensure as many people as possible enjoy these benefits.

After four proceeding rounds of projects which saw over 2,500 more residents walking and cycling across the borough, a further eight unique projects were selected to offer a range of free, active, and social activities to residents between May and October this year. The projects sought to build stronger communities, promote sustainable transport options, and support healthier lifestyles among our residents, alongside helping to tackle social isolation and loneliness.

The community groups and community interest companies (CIC) were awarded up to £4,420 to deliver their projects. All projects were unique and aimed to reach a wide variety of ages, abilities, and demographics and reached over an estimated **400 beneficiaries** in 2023.



Age UK Waltham Forest:

Age UK Waltham Forest (Age UK WF) hosted six cycling courses for older people in Chingford and Leyton. Depending on the participant’s level of ability, they could join either a ‘learn to ride’ (level 1) or ‘confidence building’ (level 2) course. The learn to ride course aimed to take participants from being unable to ride to balancing and pedalling comfortably. The confidence builder course aimed to enable those who could already cycle to feel more confident in cycling independently, using gears, and cycling on the highway. Both courses were devised to provide an opportunity for older adults to socialise, meet new people and exercise simultaneously with a goal of improving physical health and mental well-being.

CarryMe Bikes CIC

CarryMe Bikes help families and businesses find cycling solutions, aiding them to switch from car or van to cycle for leisure and logistic instead. This year, they teamed up with Lea Bridge Library to host three monthly workshops during the summer and hosted a stall at the Council’s biggest annual cycling event, Tour de Waltham Forest.



JP Fix and Ride

JP, a cycle mechanic of over 10 years established a community cycle maintenance workshop, equipping residents with the skills to service and maintain their own bikes and empowering some to even become cycle mechanics themselves. The project saw 15 beginner-style cycle maintenance workshops take place in Leyton and Chingford

JoyRiders Britain CIC

JoyRiders’ 2023 project comprised of 10 family cycle rides hosted in the summer months and school holidays. The project offered led rides to families in the local area who didn’t yet feel confident enough to cycle on their own or who didn’t own bikes but wanted their family to learn and draw the benefits of cycling. Additionally, the rides aimed to showcase local infrastructure and ‘safer routes’ for local families to access and explore the borough’s green spaces and amenities.





Everyone on Boards

Everyone on Boards (EoB) are a skateboarding community that run regular ‘skate jams’ at some of the key focal points for skateboarders and young people from diverse backgrounds in the borough. Their project was specifically aimed at children, hosting 4 skate jams (lessons) at Cann Hall Skate Park in Leytonstone and Priory Court in Walthamstow.



Life after Cancer

Life after Cancer offered a guided monthly walking peer support group between May and September to allow adults who have finished cancer treatment to meet, walk and talk for one hour with people of a similar lived experience and support worker in the Walthamstow Wetlands.

Their project aimed to have the following benefits for attendees:

- Improved mental wellbeing
- Reducing social isolation and increased social connection
- Improving an individual’s confidence
- Building physical activity into daily life

Cycle Sisters

Cycle Sisters aim to make cycling more accessible for Muslim women and teen girls. They offer free Bikeability one-to-one or small group cycle skills training with female instructors to develop cycling skills and confidence whilst cycling in green spaces and on the highway. Their funding specifically supported led cycle rides from October through to March 2024.



Salaam Peace

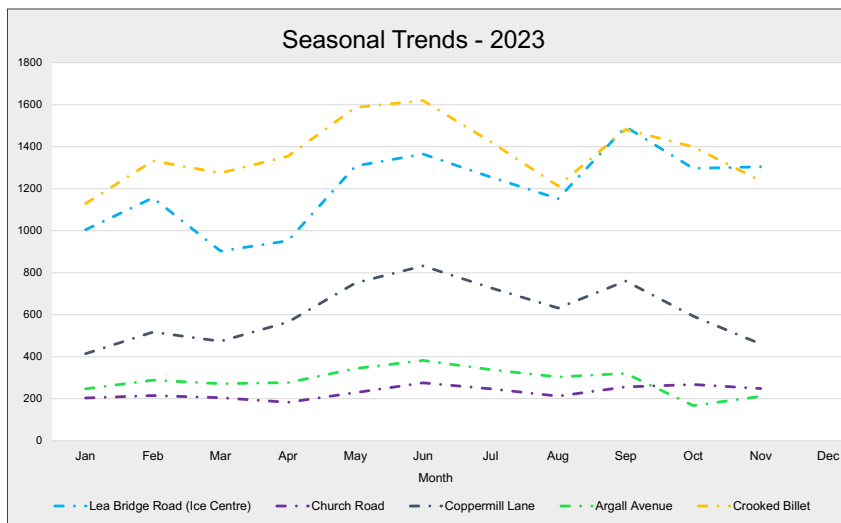
Salaam Peace is a community engagement programme that uses sports and social education to bring people together from diverse backgrounds. Their project focused on delivering weekly walking groups and group cycle rides with separate sessions for children and adults.



RESEARCH, MONITORING AND EVALUATION

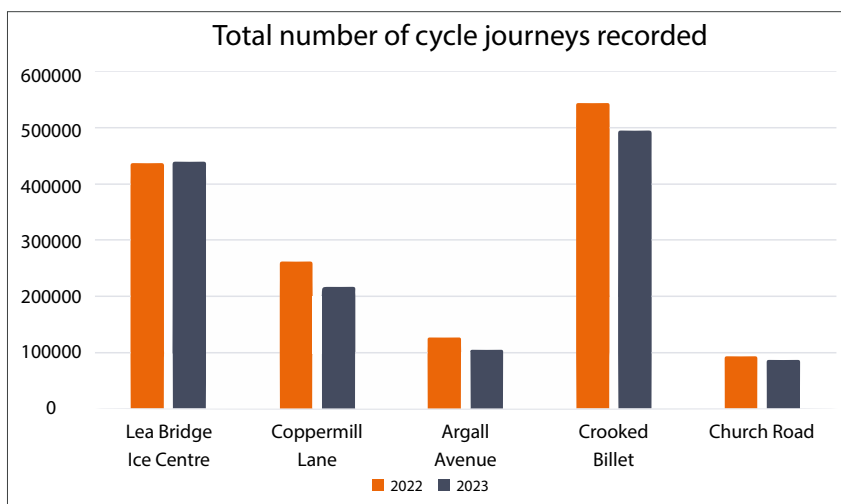
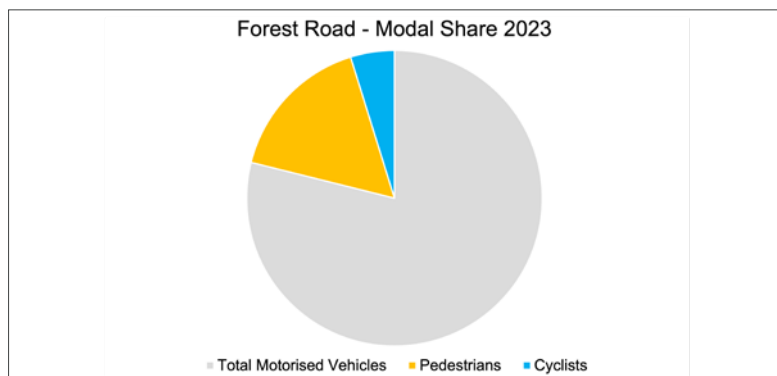
Permanent cycle counter network

We are committed to monitoring the success of cycling infrastructure installed as part of the Enjoy Waltham Forest programme and subsequent walking and cycling projects. To achieve this, 10 permanent cycle counters are in place at strategic locations across the borough to record the number of cycle journeys being completed over time. The data collected by these units provide valuable insight into the continued popularity of key cycle routes in the borough.



- June was the most popular month for cycling, with an average of 1,056 cycle journeys recorded at each cycle count location per day. The second and third most popular months were September and July respectively.
- As in previous years, strong seasonality in the number of cycle journeys completed was evident, with the fewest number of journeys recorded in the winter months.

Innovative AI-powered sensors located outside Walthamstow Town Hall have enabled us to gain new insights into modal share on Forest Road, E17. In 2023, across this stretch of Forest Road, 79% of movements recorded were motorised vehicles (including cars, vans, HGV's and buses) and 21% of journeys recorded were active travel modes (including walking and cycling).



Analysis of individual cycle count locations shows a slight decrease in the total number of cycle journeys recorded in 2023, compared to 2022. The count location near the Ice Centre on Lea Bridge Road saw a minor increase in the number of cycle journeys recorded.

Despite this, the overall number of cycle journeys recorded across the borough remains significantly above pre-pandemic levels.

Healthy Streets Scorecard

The London Boroughs Healthy Streets Scorecard, inaugurated in 2019, aims to promote action to put people’s health and wellbeing at the forefront of a borough’s transport planning. A coalition of environment and transport NGOs has come together to help Councils and residents understand better where and how they can make an impact.

In 2023 Waltham Forest was named the ‘Top Outer London borough’ due to the following factors:

- 48% of Waltham Forest is located within a LTN (3rd highest ranking in London)
- 46% of Waltham Forest is located within a CPZ (3rd highest ranking in Outer London)
- 12.8% of the borough’s roads feature protected cycle tracks (2nd highest ranking in London)
- 61% of schools hold a TfL Travel for Life school travel plan accreditation (2nd highest ranking in London)



WALTHAM FOREST’S CERTIFICATE AWARDED BY THE HEALTHY STREETS SCORECARD

“The north-east London borough is becoming famous, and has won several major awards, for delivering Healthy Streets schemes. It was one of three outer London boroughs awarded £30 million from the Mayor’s “mini-Holland” programme in 2013. Its schemes from that period are class-leading and continue to set a quality bar the rest of London struggles to match. And it has since gone on year after year to deliver more.”

HEALTHY STREETS SCORECARD



76%
of Waltham Forest residents walk or cycle at least once per month



47%
Waltham Forest residents walk or cycle at least three times per week

Department for Transport walking and cycling statistics 2022 (National Travel Survey and Active Lives Survey)

In August 2023 the Department for Transport released their walking and cycling statistics for 2022. The statistics are based on data using two main sources, the National Travel Survey (NTS) and the Active Lives Survey (ALS).

- Overall 76.1% of Waltham Forest residents walk or cycle at least once per month.
- 47.7% of Waltham Forest residents walk or cycle at least three times per week which is an increase of 5.2% compared to 2021 and 36.9% of residents travel actively at least five times per week which is an increase of 8.2% compared to 2021.
- 74.4% of residents walk at least once per month and 45.6% walk at least three times per week (an increase of 7.5% compared to 2021).
- 18.2% of residents cycle at least once per month and 13.2% of residents cycle at least once per week (an increase of 1.2% compared to 2021).

WHAT'S NEXT?

Chingford Road

Chingford Road is a strategic transport corridor, linking Hoe Street, Forest Road and Walthamstow Central with the North Circular (A406) and Chingford. Due to the severance created by the A406, Chingford Road represents one of the few direct routes connecting the centre and north of the borough and is therefore a key route for active and sustainable modes of travel.

Following some initial feasibility work during the Covid-19 pandemic we are currently carrying out a more detailed investigation into potential improvements to reduce road danger, improve bus priority and reliability and deliver continuous, protected space for people walking and cycling.

Whipps Cross Road

To support the redevelopment of Whipps Cross Hospital we are looking at ways in which we can make sure that active and sustainable travel are the first choice for people travelling to and from the hospital, where they are able to do so. Whipps Cross Road forms the primary access point to the hospital and it is important that it is as easy as possible to get to for people using these modes.

Whipps Cross Road also forms a key transport link between Leytonstone and Lea Bridge Road and is well used recreationally by people visiting Hollow Ponds. Similarly to Chingford Road, we are currently in the process of developing ideas on potential improvements to reduce road danger, improve bus priority and reliability and deliver continuous, and provide separated safe space for people walking and cycling.

EV Charging Points

In spring 2024 we plan to have delivered our 1,000th EV charging socket! Alongside delivering more charging infrastructure in early 2024 we are due to learn the outcomes of our application for the Local Electric Vehicle Infrastructure (LEVI) Capital Fund. In November 2023 we, alongside Newham and Redbridge, applied for £4,327,000 funding to deliver EV charging points at scale and pace to support residents across the region that do not have access to off street parking to adopt cleaner methods of transportation.

Bikehangers

In 2024 we plan to install an additional 150 Bikehangers on residential streets to work towards our target of 1,200 units by spring 2026.

Feasibility studies

During 2023, feasibility and design development work continued in the background on a number of prospective future major schemes. These schemes, typically on main roads in the borough and/or including major traffic signal junctions, are often technically complex and require a multitude of competing demands, aspirations and stakeholders to be considered and balanced. As such, they take a significant amount of time, funding and resource to develop, and represent priorities for the Council over the next three to five years. Some of the key schemes currently progressing include:

- Chingford Road (between Forest Road and Crooked Billet)
- Chingford Road/Mount Road (between Crooked Billet and Chingford Mount)
- Whipps Cross Road (between Lea Bridge Road and Leytonstone)
- High Road Leytonstone (between Church Lane and Newham)
- High Road Leyton (between Leyton Station and Newham)
- Snaresbrook Road/Woodford New Road junction
- Grove Green Road/Cathall Road Junction

We expect to have outline designs for these schemes ready at various stages throughout 2024 and will be starting to plan out our priorities for the coming 12 months in terms of hopefully seeking community and key stakeholder feedback on some of our early designs.

Snaresbrook Road/Woodford New Road junction

In 2019 and 2020 we extended our Lea Bridge Road (C23) cycle route from Whipps Cross Interchange along Woodford New Road to Forest Road. As part of this scheme a two-way cycle rack was introduced on the north-west side of Woodford New Road, however, due to funding limitations at the time it was not possible to fully explore options to improve and upgrade the Snaresbrook

Road/Woodford New Road signal junction to provide continuous protected infrastructure for walking and cycling along the extended route. With funding from TfL we are now investigating ways in which the junction can be improved for people walking and cycling to address this outstanding gap in one of our key routes.

High Road Leytonstone

Improving High Road Leytonstone for walking, cycling and public transport was a key part of our joint Liveable Neighbourhoods bids with London Borough of Newham in 2018 and 2019. To support and work alongside the traffic reduction schemes introduced in South Leytonstone over the past two years we are now starting to look at the development of concept and preliminary design options for a corridor improvement scheme on High Road Leytonstone between Church Lane (Leytonstone Town Centre) and Crownfield Road (effective boundary with Newham).

The scheme objectives include a particular focus on the provision of high quality continuous separated, protected space for people walking and cycling, but also include sustainable transport improvements and public realm enhancements, amongst others. Overall, we believe that the delivery of a holistic corridor improvement scheme on High Road Leytonstone will have a transformational effect on the area by revitalising areas of public space and encouraging more people to visit, contributing to the regeneration of the area.



HIGH ROAD LEYTONSTONE, E11

WALK
CYCLE
ENJOY

enjoy
WALTHAM FOREST