

# CHURCH ROAD

## Public consultation document

TELL US

YOUR

VIEWS



**WALK  
CYCLE  
ENJOY**



WALTHAM FOREST

[www.enjoywalthamforest.co.uk](http://www.enjoywalthamforest.co.uk)



MAYOR OF LONDON



# CHURCH ROAD

## Introduction

**Waltham Forest Council was one of three boroughs to be awarded £27million of funding from Transport for London (TfL) for the Mini-Holland Programme to make significant improvements to the borough and encourage more local people to walk and cycle.**

Church Road runs between Lea Bridge Road and High Road Leyton in the south of the borough and is used by up to 12,000 vehicles and 150 cyclists daily. The road has seen 52 accidents in the last five years meaning that changes to improve navigation and road safety for all road users are key.

## Key proposals

### Overview of the proposals

Improvements to cycle lanes

- Fully segregated north and southbound cycle lanes on Church Road between Lea Bridge Road and Capworth Street.
- A quieter and safer cycle route for cyclists travelling north and southbound via Capworth Street, Manor Road, and Grange Park Road.
- Fully segregated two-way cycle lanes on Grange Park Road (south), Leyton High Road and Church Road.

Improvements to the pedestrian street environment

- New street lighting
- Better signage for people who cycle
- Wayfinding

20mph zones

Improvements to bus stop accessibility

Safer crossing at road junctions

## Aims of the scheme

As part of the Mini-Holland Programme we are investing in the Church Road area to transform the streets, encouraging more people to walk and cycle. The Church Road scheme is part of the Mini-Holland Leyton to Blackhorse Road cycling and walking route, providing excellent links to Forest Road E17, Orient Way E10, Ruckholt Road E10 and local amenities and services. As well as providing better facilities for people who cycle, the road will be improved for local residents, businesses and visitors to the area.

The Church Road scheme aims to:

- Encourage more residents and visitors to walk and cycle
- Improve the look, feel and road safety of the area for all road users
- Improve access across the borough including access to local amenities and services between areas in the borough and local amenities.

### Reasons for changes

To make the road safer for all road users, especially those who walk and cycle, whilst encouraging more people to cycle.

To make the routes safer whilst improving the look and feel of the area making it an enjoyable place to be.

To reduce traffic speeds in the area making it safe and enjoyable for all.

To improve the road for all road users, especially those using public transport.

To make navigating junctions easier and safer for all road users.

# KEY INFORMATION AND DATES

## Working with the local community

We want to work together with the local community to help shape the plans and have already started this engagement process by getting local people's ideas and feedback.

In March this year a survey was carried out with local residents and businesses to get their views, concerns and aspirations for the area. The results can be found at [www.enjoywalthamforest.co.uk/work-in-you-area/church-road](http://www.enjoywalthamforest.co.uk/work-in-you-area/church-road).

The feedback received has helped us to develop a design for the area that is based on the needs of local residents and businesses.

## Consultation approach

We want everyone who lives, works and uses the road to have their say on the scheme proposals. We want to ensure that people understand the improvements, the reason for them as well as the potential benefits that they may bring.

We are asking for your views on the proposals as a whole rather than on individual measures. We are asking you to rate the proposal as well as asking what else you would like to see. This will allow us to shape and develop a scheme that best suits the local community.

## What happens next?

The feedback received will be carefully analysed and considered as part of our final design. Where possible, we will try to incorporate people's suggestions however where this is not possible we will provide a reason why. We will produce a summary of the results for everyone who took part and will say how they have been used.

## How you can have your say

There are a number of ways for people to provide comments:

- Complete our online survey by visiting [www.enjoywalthamforest.co.uk/work-in-you-area/church-road](http://www.enjoywalthamforest.co.uk/work-in-you-area/church-road)
- Visit us at our information stand to view the plans and ask questions on Wednesday 15 July at 5pm to 8pm, St. Joseph's Catholic Junior School, 150 Vicarage Road, London E10 5DX
- Request a paper copy of the consultation document by calling **020 8496 3000** or emailing [miniholland@walthamforest.gov.uk](mailto:miniholland@walthamforest.gov.uk).

## Timescales

Stage	Timescales
Public consultation	July 2015
Detailed scheme design	September to October 2015
Construction	Late 2015
Review of scheme	From six months after implementation

# CHURCH ROAD PROPOSAL

**The proposal has been developed based on the results from surveys, information on traffic movements and traffic survey data. The residential area is also part of the Mini-Holland Leyton Town Centre scheme and will benefit from further improvements to the area such as public realm improvements in 2016.**

The key elements of the proposals are shown on **maps one to five** and outlined in this document. To help us manage the scheme, the area has been separated into three sections, A, B and C, however the consultation questionnaire will ask you to comment on the route proposals as a whole.

## Cycle route

We want to provide the best possible route for people who cycle in the area. A cycle route is proposed on Church Road from Lea Bridge Road through to High Road Leyton.

Although Church Road provides a direct route to High Road Leyton, the cycle route will be directed off Church Road in order to reduce parking impacts to residents living on the road whilst providing a safe and quiet route for cyclists.

The cycle route at its northern and southern ends will include a mix of fully segregated cycle tracks with section B providing a quieter route for cyclists through residential streets. Section B will have improved cycle wayfinding measures implemented, and due to the nature of these streets segregated cycle tracks will not be implemented in this section.

The cycle route will begin on Lea Bridge Road with fully segregated cycle lanes, turn left at Capworth Street and then right onto Manor Road providing a much quieter, safer and more direct route. It will then link back into the fully segregated route at Grange Park Road, Church Road and Leyton High Road (as shown on map one).

To facilitate the proposed route, new cycling facilities such as improved signage will be put in place to make the direction of travel clear for cyclists. The route will also be potentially enhanced by the Leyton Town Centre improvements.

To accommodate the fully segregated tracks the following changes will be made to the existing road layouts:

### Section A (see map two)

- Removal of the single yellow line
- Partial removal of bus lane.

### Section C (see map four)

- Removal of single yellow line
- Removal of bus lane between Grange Road and High Road Leyton
- Removal of existing parking and loading provision on the following roads. Where parking is removed we will seek to make additional parking in surrounding area.
  - Grange Park Road between Church Road and High Road Leyton
  - Eastern side of High Road Leyton between Church Road and Grange Park Road.

## Creating a safer environment

Residents have told us that reducing the amount of speeding traffic and creating a safer environment in the scheme area are key priorities. In response we are proposing to introduce a number of measures that will improve safety in the area for all road users.

# CHURCH ROAD PROPOSAL

A 20mph speed restriction will be put in place along Church Road along with traffic calming measures, such as raised junctions and crossings, to reduce speeds and improve the safety for all road users.

Raised 'Copenhagen' style crossings, also known as blended crossings, will be implemented at all minor side roads. The pedestrian footway will be continued across side roads, giving priority to pedestrians and cyclists over vehicles. Vehicles will slow down on entering or exiting the side road with tighter corners on the junctions, and give way markings.

Significant improvements will be made to existing crossing points on Church Road as can be seen in the section B and C proposed measures.

## Section B (see map three)

- Church Road junction with Capworth Street – raised priority junction
- Church Road junction with Oliver Road – raised signal controlled junction
- Park Road to Marsh Lane – raised cycle/pedestrian parallel crossing upgrade
- Opposite 132 Church Road – raised uncontrolled pedestrian crossing
- Church Road junction with Goldsmith Road – raised junction with uncontrolled pedestrian crossing.

## Section C (see map one)

Improved zebra crossings will be located at:

- Church Road junction with Grange Park Road
- Grange Park Road junction with High Road Leyton
- Church Road junction with High Road Leyton.

## Bus stop improvements

Existing bus stops will be updated (or improved) to make conditions safer for cyclists and bus passengers, and to prevent buses from having to slow down to avoid people cycling. The new bus stops will reduce the chance of conflicts between pedestrians and cyclists, and avoid the sometimes hazardous interactions between buses and cyclists. The bus stops will be upgraded to TfL accessibility standards making this better for elderly or disabled passengers and parents with prams and buggies.

## How you can have your say

We want to hear your views on the proposed improvements.

- Complete our online survey by visiting **[www.enjoywalthamforest.co.uk/work-in-you-area/church-road](http://www.enjoywalthamforest.co.uk/work-in-you-area/church-road)**
- Visit us at our information stand to view the plans and ask questions on 15 July at 5pm to 8pm, St. Joseph's Catholic Junior School, 150 Vicarage Road, London E10 5DX
- Complete a paper copy questionnaire and return it using the freepost envelope provided. To request a paper copy of the consultation document and questionnaire call **020 8496 3000** or email **[miniholland@walthamforest.gov.uk](mailto:miniholland@walthamforest.gov.uk)**.

For more information on the Church Road scheme or the Mini-Holland Programme visit **[www.enjoywalthamforest.co.uk](http://www.enjoywalthamforest.co.uk)**, or email **[miniholland@walthamforest.gov.uk](mailto:miniholland@walthamforest.gov.uk)**.

# MAP APPS



SECTION A: FULL SEGREGATED TWO-WAY CYCLE LANES AND 20MPH ZONE

SECTION B: 20MPH ZONE

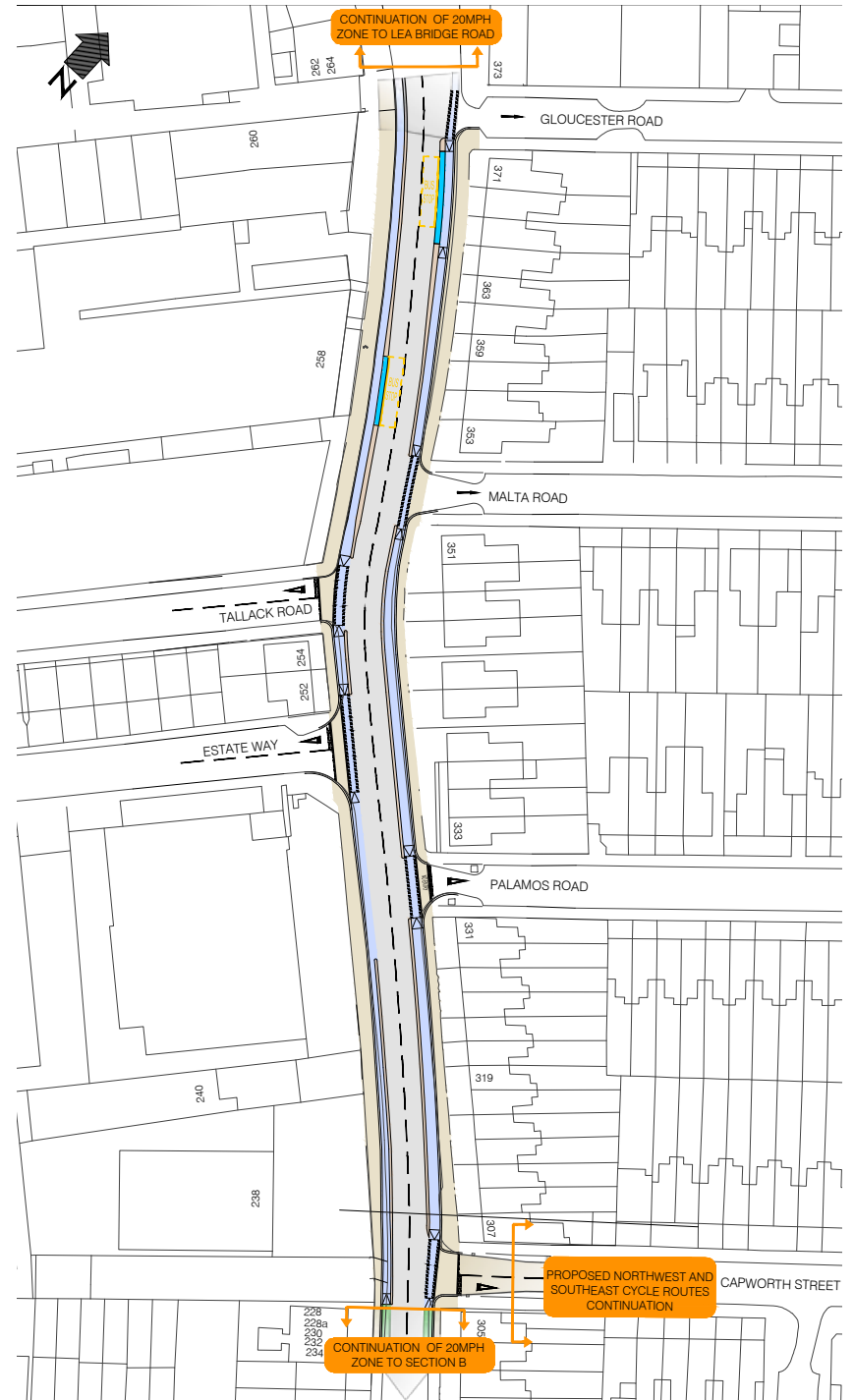
SECTION C: FULL SEGREGATED TWO-WAY CYCLE LANES AND 20MPH ZONE

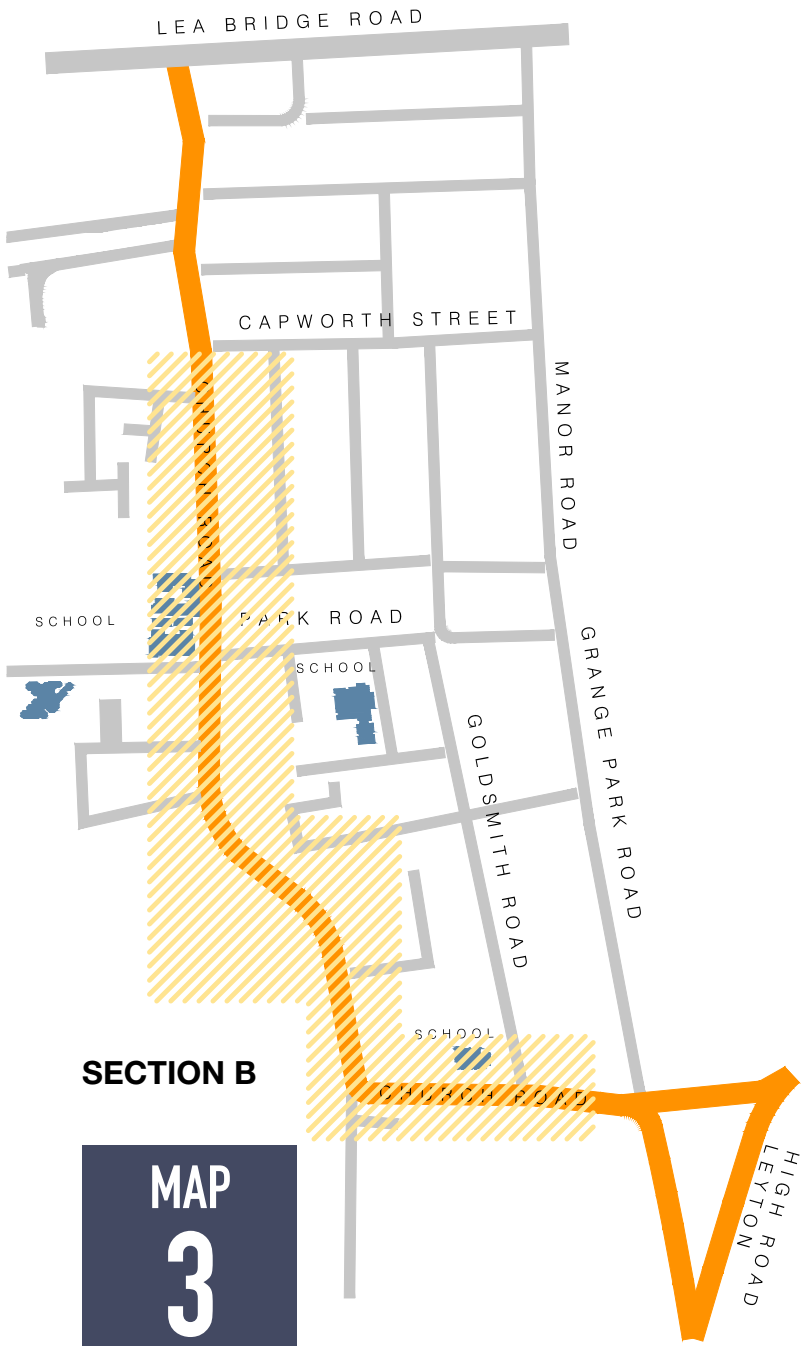
MAP 1  
SCHEME OVERVIEW

SECTION A



MAP  
2  
SECTION A

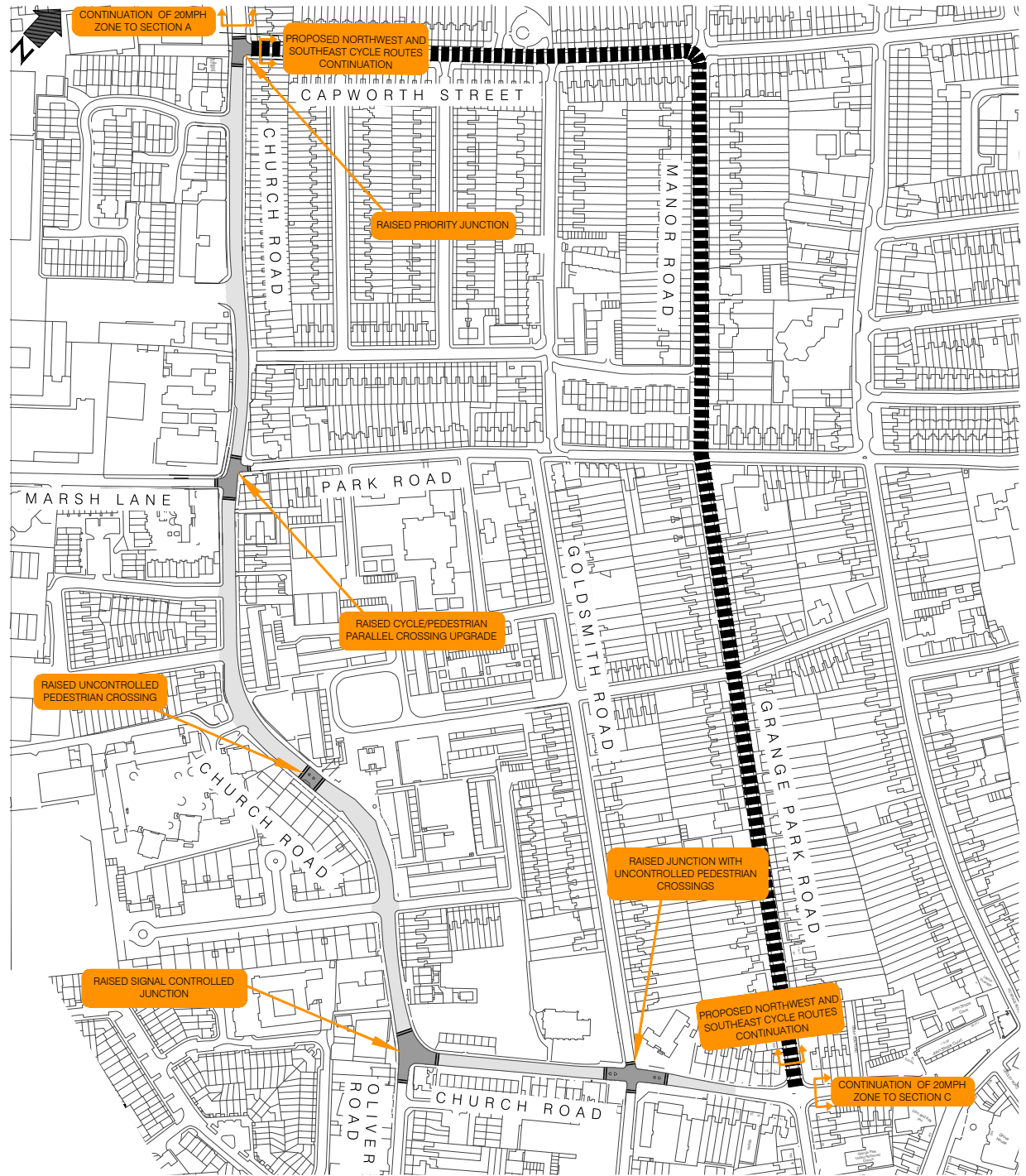




**SECTION B**

**MAP  
3**

**SECTION B**







LEA BRIDGE ROAD

### CYCLE ROUTE

CAPWORTH STREET

CHURCH ROAD

MANOR ROAD

SCHOOL

PARK ROAD

SCHOOL

GOLDSMITH ROAD

GRANGE PARK ROAD

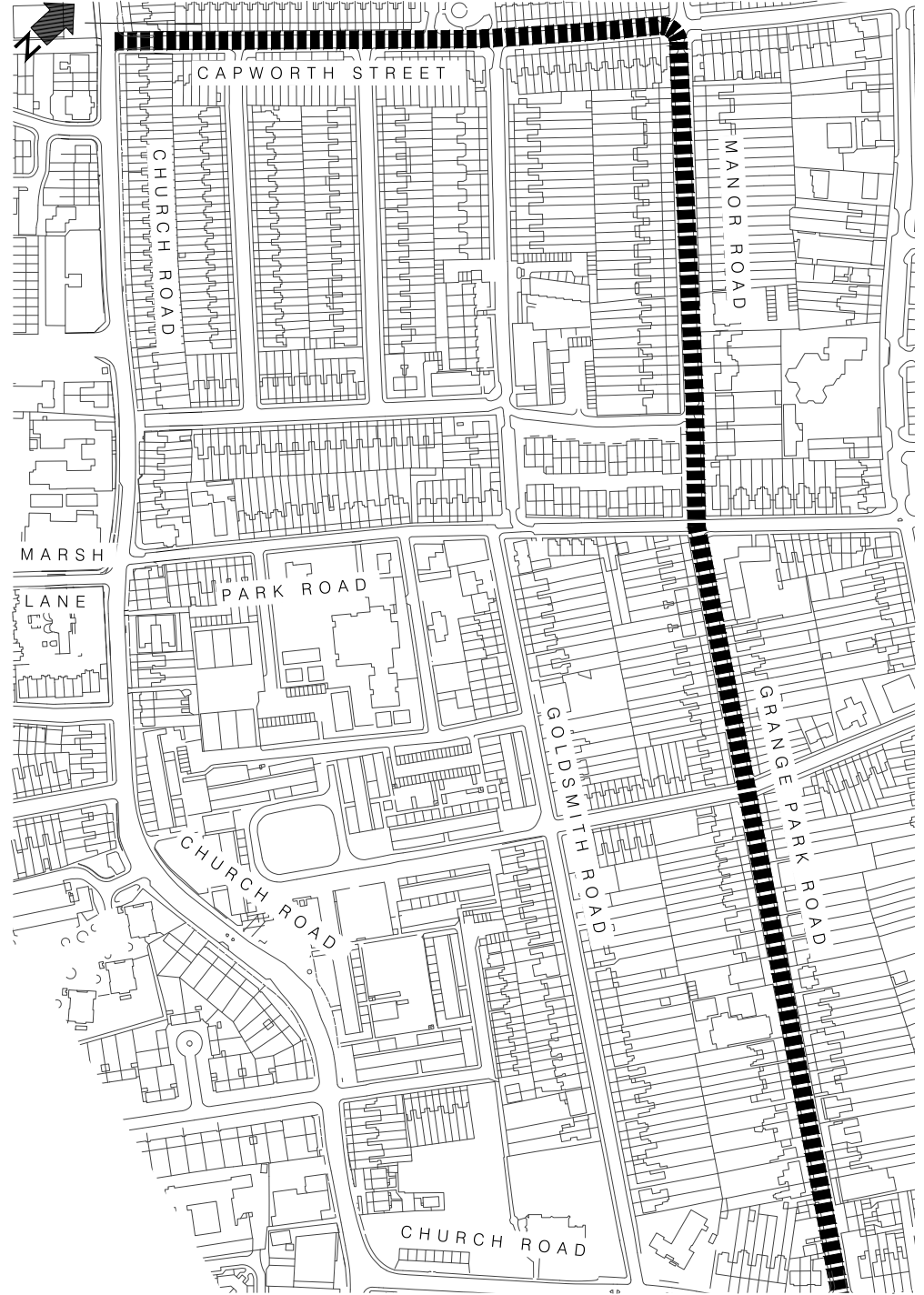
SCHOOL

CHURCH ROAD

HIGH ROAD  
LEYTON

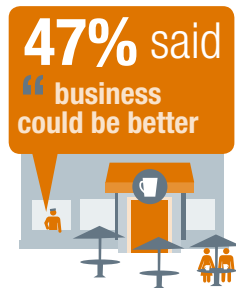
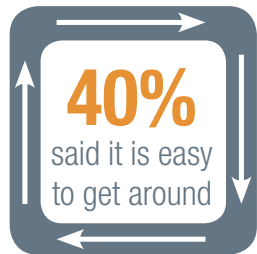
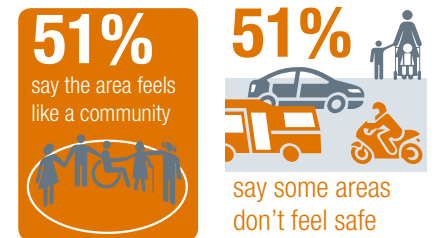
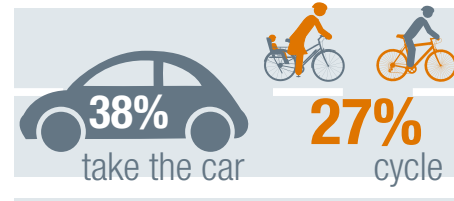
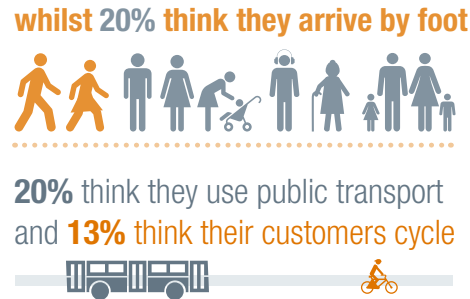
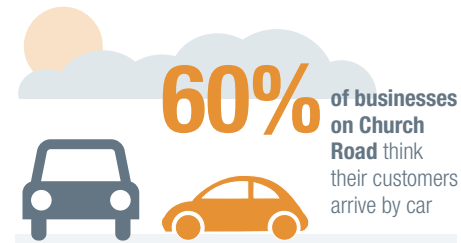
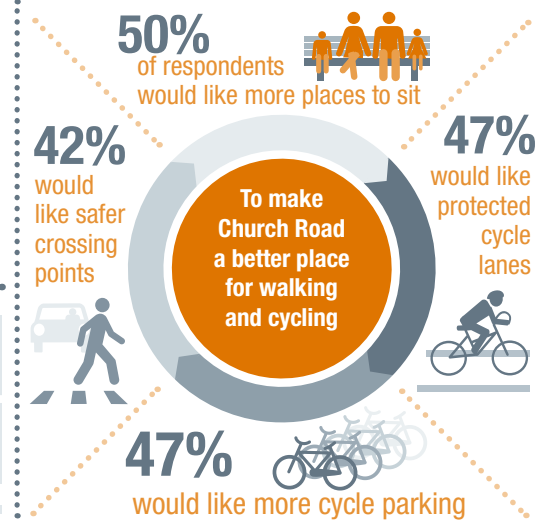
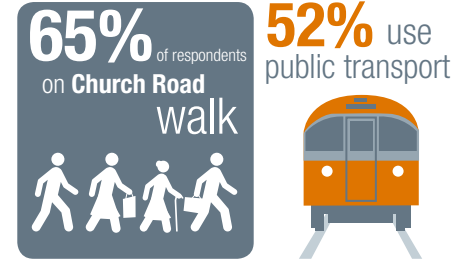
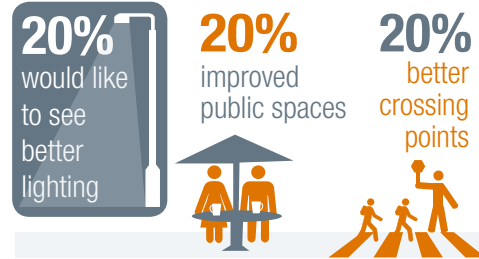
MAP  
5

CYCLE ROUTE



# SURVEY RESULTS

Headline results from the early engagement surveys.



For more information on the Church Road scheme visit [www.enjoywalthamforest.co.uk/work-in-you-area/church-road](http://www.enjoywalthamforest.co.uk/work-in-you-area/church-road)

# WALK CYCLE ENJOY