

Waltham Forest

GET
YOUR
FREE
COPY

AUTUMN 2024

NEWS

ISSUE 254

FOREST CINEMAS

YOUR
NEW
LOCAL
CINEMA



Find Us Here:
The Scene
267 High Street
Walthamstow
E17 7FD

CHECK OUT THE LATEST
SHOWTIMES

www.forestcinema.co.uk

CHECK OUT OUR SOCIALS



@forestcinemas



Forest Cinemas

COMING SOON.....



Joker: Folie à Deux

OCT 4th

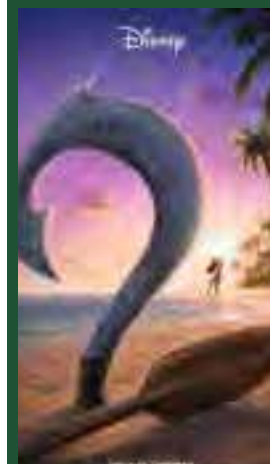
Arthur Fleck is institutionalised at Arkham, awaiting Trial for his crimes as Joker, where he meets his perfect match.



Venom: The Last Dance

OCT 25th

Eddie and Venom are on the run. Hunted by both of their worlds and with the net closing in.



Moana 2

NOV 27th

After receiving an unexpected call from her ancestors, Moana journeys to the far seas of Oceania and into dangerous, long-lost waters.



Transformers One

OCT 11th

The untold origin story of Optimus Prime and Megatron, better known as sworn enemies, but once were friends bonded like brothers.



Paddington In Peru

NOV 8th

Visiting his beloved Aunt Lucy, a thrilling adventure ensues when a mystery plunges them into an unexpected journey through the Amazon.



Kraven the Hunter

DEC 13th

Kraven 's complex relationship with his ruthless father, Nikolai Kravinoff, starts him down a path of vengeance with brutal consequences.



The Wild Robot

OCT 18th

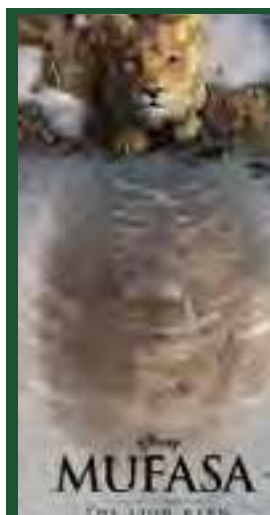
After a shipwreck, an intelligent robot is stranded on an uninhabited island. Bonds with the island's animals to survive the harsh environment.



Gladiator II

NOV 15th

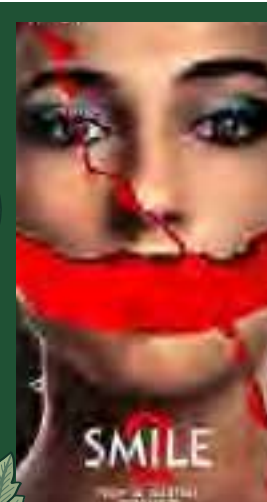
After his home is conquered by the tyrannical emperors who now lead Rome, Lucius is forced to enter the Colosseum.



Mufasa: The Lion King

DEC 20th

Simba, now king of the Pride Lands, is determined for his cub to follow in his paw prints, while exploring the origins of his late father Mufasa.



SMILE 2

OCT 18th

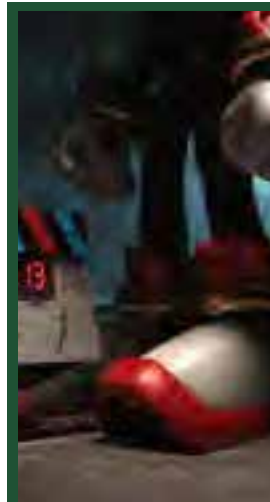
About to embark on a world tour, global pop sensation Skye Riley begins experiencing increasingly terrifying and inexplicable events.



Wicked

NOV 27th

Making it's journey to the big screen as a spectacular, generation-defining two-part cinematic event this holiday season.



Sonic the Hedgehog 3

DEC 21st

Sonic, Knuckles, and Tails reunite against a powerful new adversary, Shadow, a mysterious villain with powers unlike anything they have faced before.

Waltham Forest



AUTUMN 2024 | NEWS | ISSUE 254

Keep on truckin'

The 'Very Hungry Caddy-Filler' is on a mission to collect your food waste

This summer, we launched a competition asking for residents' ideas to name our new food waste trucks.

The overall winner is 'The Very Hungry Caddy-Filler', suggested by Adelaide Horner.

Over 800 suggestions were put forward after we asked residents to name our new fleet of trucks that provide the new food waste collection service.

This was whittled down to 13 names, which were printed on the side of the trucks.

The top two names were put to a public vote where Waltham Forest residents could choose their favourite. After counting the results, 'The Very Hungry Caddy-Filler' was crowned the winner.

Adelaide, aged 9, from Barclays Primary School, was delighted to have won the competition. She said: "So, I thought that we might search through my books about food waste and I saw the 'Very Hungry Caterpillar'.

"And I thought since it's a food waste truck, what if we replace



Deputy Leader Cllr Clyde Loakes congratulates competition winner Adelaide Horner

Caterpillar with Caddy-Filler? So, we got 'The Very Hungry Caddy-Filler'!"

The trucks are already in service collecting your food waste. Please see page 5 for details of the food waste collections and when they will start in your area.

The runners-up

- Damon Albanana
- You've lost that rubbish peeling
- Donut go bacon my heart
- Elvis Parlsey
- Easy Peasy Lemon McWheely
- Melonator
- Trashzilla
- So-fish-ticated
- Rita the Margher-eater
- Decompostow
- Reecycle Witherspoon
- Olivia Codrigo

OPEN DAY

SATURDAY 23RD NOVEMBER 2024 10AM - 1PM



MX MONOUX
SIXTH FORM COLLEGE

f X @monouxcollege

+44 (0) 208 5233 544 | info@sgmc.ac.uk

WWW.SGMC.AC.UK

OUR MISSION WALTHAM FOREST

Council Leader, Cllr Grace Williams



We stand together in Waltham Forest

As this paper lands on your doorsteps, we are marking one year of the conflict in the Middle East that has so far claimed the lives of thousands of innocent men, women, and children.

The pain and distress that this has caused to those directly involved in the conflict and the impact in our own community cannot be measured.

I have always been so proud of this community and its

willingness to welcome new friends of all beliefs and backgrounds.

Over the last year, we have heard local faith leaders firmly and decisively denounce division and hate. We have worked hard as a community to bring people together and recognise what unites us.

We have stood together in defiance of those who would seek to divide us and exploit tensions. If you are the victim of or witness

to a hate crime, please report it using **stophateuk.org** to help us prevent the same happening to anyone else.

In Waltham Forest, there is no space for antisemitism. There is no space for Islamophobia. There is no space for racism or hatred. We are stronger together.

As we move toward winter, making sure that the most vulnerable members of our community receive the support they need is so

important. We know the cost-of-living crisis is not over. A good first step is making sure that you are claiming any benefits that you may be eligible for.

Research has shown that an estimated 3,300 older people in Waltham Forest who are eligible for Pension Credit do not claim it.

As you may have heard, Winter Fuel Payments are changing this year and will not be automatically given to everyone. Receiving Pension

Credit will also mean you receive a Winter Fuel Payment.

It may be that some residents are not even aware of Pension Credit.

Please help spread the message and check that older family members, friends, or neighbours are receiving the support to which they are entitled.

See page 19 in this issue of your WFN for more information.

• MAYOR'S UPDATE •



Cllr Sharon Waldron, the Mayor of Waltham Forest, has enjoyed attending events in the borough over the last few months, including FaithFest, the Butterfly Festival, Norlington 6th Form celebration evening, and Fredrick Bremer Café.

The Mayor also held her first charity event 'An Evening of Meditation' which took place in August at Waltham Forest Town Hall. Guests attended to enjoy a meditation session hosted by FISU Meditation School and all proceeds from this event went to the Mayor's charity ventures.

During the next few months she will be holding a range of charity events, including the Mayor's Christmas Quiz taking place on Thursday 5 December. Keep an eye out for more information about how you can join in very soon.

Currently, the Mayor is holding a charity raffle. Local youth organisation Project Zero has kindly donated a large bear - to win the bear, you have to correctly guess the name!

Each guess cost £2 and the winner of the raffle will be announced on Friday 8 November. All proceeds will go towards the Mayor's charity appeal. To find out more about these charities, please visit the Mayor's page on the Waltham Forest website.

To purchase raffle tickets and have a go guessing the bear's name please visit bit.ly/BearRaffle or scan the QR code.



Contact Waltham Forest Council



www.walthamforest.gov.uk

BETTER ONLINE | More services available online.



Waltham Forest News

Edited by: Corporate Communications Team

Waltham Forest News wants to hear from people in the local community. If you have a story that you'd like us to cover, email walthamforestnews@walthamforest.gov.uk.

Advertising and promotional enquiries:

Please email: advertisingwfn@walthamforest.gov.uk

Waltham Forest Council does not accept responsibility for the content of any non-council advertisements in Waltham Forest News.

Their inclusion does not mean that the council endorses the company or product being advertised.

Waltham Forest News is produced using trees from sustainable managed forests where more trees are planted than felled. Please recycle Waltham Forest News when you have finished with it.

facebook.com/walthamforestcouncil

[@lbwalthamforest](https://www.instagram.com/lbwalthamforest)

[@wfcouncil](https://twitter.com/wfcouncil)



Waltham Forest News is published quarterly by London Borough of Waltham Forest with a print run of 123,000 copies delivered to homes, organisations, businesses and bulk drops in the borough.

The official independently audited free letterbox delivery of Waltham Forest News is 102,773 ABC Regional January to December 2021

Terms of endearment

Welcoming the first undergrads to the University of Portsmouth London

The first group of undergraduate students will start their new courses as the autumn term begins at the University of Portsmouth London campus in Walthamstow.

For many international students, Walthamstow and Waltham Forest were unfamiliar names before arriving – including for Mohit, who has come from India to study for a master’s degree in International Business and Management.

What were your first impressions of Walthamstow?

“When I first came here I was struck by its charm, from the vibrant high street market to the variety of restaurants - plus, it’s well-connected to central London. Despite not knowing anything about Walthamstow before I arrived, I’m really happy with my decision. It’s made me feel very safe and

.....
“I see a lot of opportunities to contribute to the university’s growth, whether through achieving strong academic results or working as a Student Ambassador”

has provided opportunities to meet people from different nationalities, allowing me to learn about their cultures. I’ve also enjoyed socialising, especially spending weekends playing pool and snooker.”

How does it feel to be one of the first students at a brand-new university?

“At first, I was a bit nervous being in a new country and surrounded by unfamiliar faces, but I soon became more comfortable. Being part of the first cohort feels exciting, and I see a lot of opportunities to contribute to the university’s growth, whether through



Mohit is studying for a master’s degree in International Business and Management

achieving strong academic results or working as a Student Ambassador.”

What are some of your favourite spots in Walthamstow?

“Lloyd Park is a great spot

for students to relax, take a break from studying, and enjoy some sunshine. It’s a beautiful, green space where you can also play sports. The William Morris Gallery is also a favourite, a museum, offering a mix of art, culture, and history.”

Everyone in Waltham Forest hopes all the new students love living here – welcome to our borough.

More info

Find out more by visiting london.port.ac.uk

Gotta have FaithFest

Spirit of togetherness shines brightly at community event



Guests enjoy learning new things and meeting new friends

Fellowship Square welcomed residents from many diverse communities on Sunday 18 August for the first ever FaithFest – a celebration of our religious and non-religious communities alike.

The people of Waltham Forest came together in a display of unity and the ties that bond us together.

Throughout the day, guests enjoyed a range of performances led by faith leaders, including nasheed performances, a dance performance based on Taoist principles, Bharatanatyam dancing – sharing spiritual ideas of Hinduism and Jainism - alongside a Christian children’s choir and many more.

The people of Waltham Forest came together in a display of unity and the ties that bond us together

In addition to the fantastic performances, attendees had a range of activities to get involved with for free, which included studying the Nativity, painting a Star of David, henna hand painting, saree draping as well as a pop-up library with an array of literature on religion and culture – and more.

One of the highlights of the FaithFest was the ‘Tree of Hope’ which was decorated by residents with messages of love and peace.

Faith Leaders, the Waltham Forest Communities Team, and attendees finished with a dance to conclude the heartwarming day filled with joy and togetherness.



Residents came together to create a Tree of Hope

4 Enjoy Waltham Forest

Tour blimey!



Annual cycling extravaganza a hit despite the weather

The annual Tour de Waltham Forest took place on Sunday 22 September, coinciding with World Car Free Day.

Nearly 400 riders braved a very wet-looking weather forecast to ride routes of 9, 16 or 20km around the borough. Luckily, the rain held off and participants rode 5,823km in total - equivalent to 35 stages of Tour de France.

Thank you to everyone who came and took part in the event, to all of our community organisations, and to Deeney's who kept everyone entertained and well-fuelled at Fellowship Square.

Keep an eye on our social channels and our newsletter for future walking and cycling events.



Is there a Dr Bike in the house?



If your cycle needs a check-up, bring it along at any of these times and the Dr Bike team will take a look for you - for free!

They can fix minor mechanical details on the spot and will give you recommendations for any further work that might be needed.

- Sat 12 Oct:** Drapers Field, 10am to 4pm
- Sat 19 Oct:** Chingford Leisure Centre, 10am to 4pm
- Sun 20 Oct:** Walthamstow Pumphouse Museum, 10am to 4pm
- Sat 26 Oct:** Langthorne Park, 10am to 4pm
- Sat 2 Nov:** Walthamstow Town Square Gardens, 10am to 4pm
- Sat 9 Nov:** Abbots Park, Leigh Road entrance, 10am to 4pm
- Sat 16 Nov:** Albert Crescent, Chingford Mount, 10am to 4pm
- Mon 18 Nov:** Leytonstone Station, 4pm to 7pm
- Tues 19 Nov:** Chingford Leisure Centre, 4pm to 7pm
- Weds 20 Nov:** Lee Valley Ice Centre, 4pm to 7pm
- Thurs 21 Nov:** Wood Street Library, 4pm to 7pm
- Fri 22 Nov:** Blackhorse Road Station, 4pm to 7pm
- Sat 23 Nov:** Higham Hill Park, 10am to 4pm
- Sat 30 Nov:** Cann Hall Park, 10am to 4pm
- Sat 7 Dec:** Walthamstow Town Square Gardens, 10am to 4pm
- Sat 14 Dec:** Albert Crescent, Chingford Mount, 10am to 4pm



Cycling lessons



If you're new to cycling or would like to gain more confidence on your bike, we offer free lessons.

These are available to anyone of any age, and can be done individually, as a family, or in a small group.

They include building basic skills, advice on navigating your local area, and building confidence to feel more comfortable cycling in traffic or at night.

Find out more by searching for 'cycle training' on the council website.

Get walking and cycling news to your inbox

Our monthly Enjoy Waltham Forest e-newsletter has information about all things walking and cycling across Waltham Forest.

Sign up by visiting bit.ly/Enjoy10Newsletter

WEEKLY

FOOD



RECYCLING

COLLECTIONS



UNEATEN FOOD

All uneaten food and plate scrapings



FRUIT & VEG

Raw and cooked vegetables, whole fruit & peelings



FISH, MEAT & BONES

Raw and cooked meat, Raw and cooked fish, bones

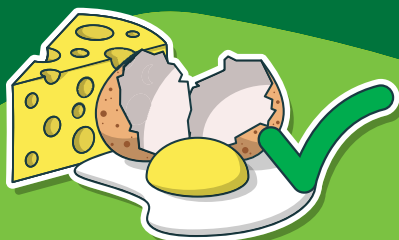


BREAD & PASTRIES

Bread, cakes and pastries



RICE, PASTA & BEANS



DAIRY

Dairy products, cheese and eggs



TEA & COFFEE GROUNDS

PLEASE DO NOT PUT FOOD WASTE IN YOUR TWO-WHEELED BROWN BIN. THIS IS FOR GARDEN WASTE ONLY NOW.

CHECK YOUR BIN COLLECTION DAY



COLLECTION START DATES

SOUTH - Monday 23 September

NORTH - Monday 14 October

RECYCLE ALL YOUR FOOD WASTE WITH OUR NEW SEPARATE COLLECTIONS
WALTHAMFOREST.GOV.UK/FOODRECYCLINGCOLLECTIONS



May the Forest be with you

The beginning of a beautiful friendship

They're here: on Friday 23 August Forest Cinemas opened its doors and brought the magic of cinema back to Waltham Forest.

After the unexpected closure of the Empire in July 2023, we immediately worked to find a new operator for the site. We were thrilled to appoint PDJ Cinemas, a family firm who are committed to making the cinema a valued part of the local community. Forest Cinemas' opening was just in time to catch National Cinema Day, Sunday 31 August, when nearly 1,700 guests came through the doors.

Cllr Grace Williams, Leader of Waltham Forest Council, said: "I'm delighted that we have our cinema back – given Waltham Forest's links with the legendary Alfred Hitchcock, it's only right that local people can enjoy films on the big screen right here on their doorsteps.

"It's such a good news story that we can work with an independent family-run business like PDJ Cinemas and at the same time create

new employment opportunities for residents. I hope you all take the chance to support your local picture house and visit Forest Cinemas very soon."

And if you needed another reason, on Mondays there's an offer you can't refuse: all tickets to all films are just £5. Senior Wednesdays and Kids Club on weekend mornings will also be launching soon, with discounted prices, as well as more subtitled screenings and plans for SEN and Autism-friendly screenings.

.....
"I hope you all take the chance to support your local picture house and visit Forest Cinemas very soon."
.....

So run, Forest, run, to your new local cinema: the friendly team are ready to help you, and there's a great autumn of moviegoing coming up with the likes of Paddington in Peru, Joker: Folie A Deux, Gladiator 2, Wicked, and some special spooky Halloween programming.

More info

Visit the Forest Cinemas website for information, listings and to book tickets: www.forestcinema.co.uk



Show me the money:

Helping local people into employment at Forest Cinemas

As part of getting Forest Cinemas up and running, the council ran a recruitment process for a new team of local staff.

One of the cinema's new team members is Jason Adu, who self-referred to the council's Opportunities Team in November 2023 as he was struggling to find and keep work.

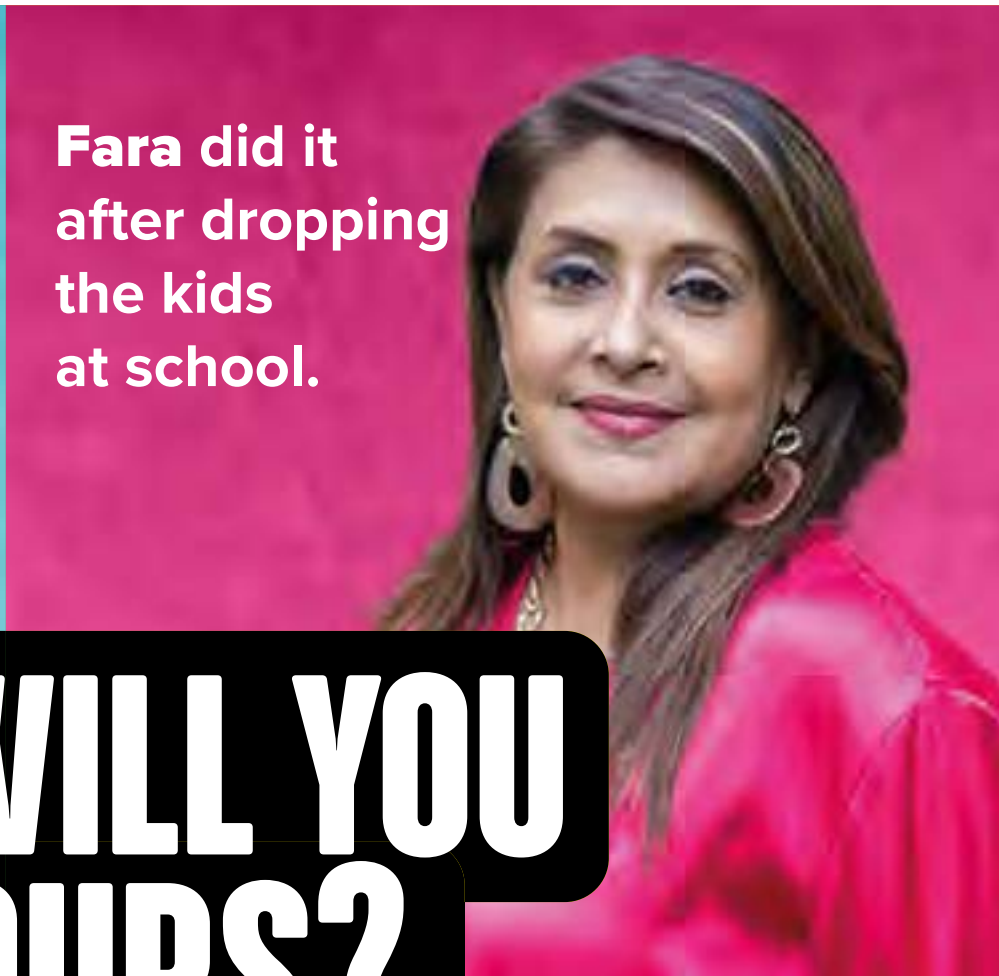
Jason said: "After building confidence and gaining work experience via the Supported Employment Project, I secured an interview with Forest Cinemas, and have since started working at the new cinema. I'm really happy to be here and hope to welcome you to Forest Cinemas soon."

He joins a team of 31 members of staff, all residents from Waltham Forest, recruited through Waltham Forest Jobs, many of whom have come through the Opportunities Team.





Ian did it before he played golf.



Fara did it after dropping the kids at school.

WHEN WILL YOU DO YOURS?



Join the bowel movement. It only takes a minute.

Joy did it after her morning coffee.



Ahmed did it before cutting the grass.

Bowel cancer is the third most common cancer in the UK, but can easily be detected before there are any symptoms with the at-home kit.



You'll receive a kit in the post **every 2 years** once you turn 50 until you're 74.

The at-home kit is quick, simple, and easy to use.

Go to bit.ly/forestbowel

to learn more and order a replacement kit if you need one.



Make it Happen fund applications to open in November

Residents can apply for money to support delivery of hyper local cultural activities

Since 2019, the **Make it Happen Grants programme** has enabled over 70 local arts and culture projects to be delivered, bringing communities together to discover and celebrate local stories and spaces.

In 2024, the council funded 16 exciting creative projects across the borough. These included the launch of a digital platform app called ARIA co-designed with young people; Follow the Forest which involved free guided-walks that explored the unique history of Epping Forest; and At the Rainbow's End – a play based on interviews with older LGBTQ+ people who have experienced discrimination in care settings.

.....
You can apply for between £1,000 and £15,000 to deliver a creative health project in Waltham Forest
.....

The impact lives on, as it is now being performed as training for staff of care homes in the borough.

Using culture and arts as part of Creative Health programmes have been shown to improve health outcomes, a key strand of Mission Waltham Forest.

Next year, Waltham Forest Council is investing £100,000 to support new creative health projects in

Waltham Forest through the Make It Happen programme.

Applications open on Wednesday 13 November 2024.

You can apply for between £1,000 and £15,000 to deliver a creative health project in Waltham Forest between May-December 2025. It needs to involve creative approaches and activities which have benefits for our residents' health and wellbeing.

Successful Make It Happen applicants can also apply for an extra amount of up to £500 if they are eligible. This is to help with the delivery of the project by providing further funding to overcome access barriers such as childcare, carer support, translations, BSL Interpreters, and more.

In addition, we are looking at ways we can provide further support to local individual creatives and organisations across the borough.

More information will be provided from November including how to apply for Make It Happen 2025 grants. Please visit walthamforest.gov.uk/makeithappen2025 for regular updates.

More info

Follow our Instagram channels [@lbwfculture](https://www.instagram.com/lbwfculture) and [@lbwalthamforest](https://www.instagram.com/lbwalthamforest) for more information.



Applicants at the Creative Trades Networking, Walthamstow Trades Hall.

Photo credit: Jenna Selby



At the Rainbow's End performance, Walthamstow Trades Hall.

Photo credit: Jenna Selby

Sandra and Lee find their fostering fit

One couple's journey from an independent agency to working with Waltham Forest Council



Lee's company Elliotts Property Services offer apprenticeships to young people who have been in care.



Sandra and Lee in their garden

Waltham Forest residents Sandra and Lee have been foster carers for school-aged children for 23 years.

Sandra has worked in local schools for two decades, and now helps children with special educational needs. Lee is the Director of property maintenance business Elliotts Property Services.

They decided to become foster carers after Sandra suffered a serious illness 25 years ago. Friends and family supported them with their three young birth children.

Sandra said: "We were so grateful and when I recovered, I wanted us to help other families who needed support. I

saw an advert for a small Independent Fostering Agency (IFA), and we joined them. Initially things were fine, however, a much larger nationwide IFA later brought them.

.....
"They understand our shyness and make us feel at home. Sandra's dinners are delicious, and we already feel like it's our home"
.....

"We could not foster the young people that they were contacting us about as their schools and family time with their birth families were too far away for us to manage."

Sandra and Lee looked at the local offer from Waltham Forest and decided it offered them more support.

"Our neighbour is a Waltham Forest foster carer, we talked to her about her experience, and she was happy. She introduced us to Waltham Forest, and everything has been great. We had a wonderful social worker throughout our assessment."

Waltham Forest respond to all enquiries swiftly, starting with an initial phone call, then a home visit by a social worker.

Sandra shared the benefits of fostering for the council: "The support is great, all the services work alongside each other. Also, there's

less disruption for children. They aim to keep children close to their schools and family network and friendship groups.

"I have also connected with other local carers, we are on a WhatsApp group and we check in with each other."

One highlight of Sandra and Lee's time fostering with Waltham Forest has been winning a foster carer award for 'going above and beyond,' nominated by two sisters in care who said:

"They have been very considerate and supportive towards us. They introduced us to their family and other foster carers, making sure we have someone to talk

to. They understand our shyness and make us feel at home. Sandra's dinners are delicious, and we already feel like it's our home."

Sandra concluded: "To anyone considering fostering with Waltham Forest I'd say go for it, it is definitely worthwhile."

More info

Waltham Forest is part of Local Community Fostering, a network of six northeast London boroughs aiming to inspire more people to become foster carers. Call **020 8496 3437** or visit **www.localcommunityfostering.co.uk** to learn more.



OPEN EVENT

Guided Tours

Advice & Guidance

Taster Activities

Apply for a Course

Wed 30 October, 4pm - 7pm

Follow us:



REGISTER NOW:
Visit waltham.ac.uk or
scan the QR code.



#ThinkBIG

Waltham Forest College 

Saving money and the environment

Retrofit provides major energy efficiency boost for tenants



At Leytonstone's Southfield Court – a 1970s four-storey 40-unit hostel that houses residents from across the borough – we recently completed a state-of-the-art retrofit in partnership with contractors Aston Group, resulting in a major energy efficiency upgrade.

Southfield Court was chosen for a full retrofit in 2021. The property averaged an EPC rating of D and required multiple building and fabric updates.

Aston Group was appointed, building on their experience having previously worked on our award-winning retrofit Eco Show Home at 47 Greenleaf Road, in Walthamstow.

Works started in 2022; however, as most flats were occupied, a plan was developed for a steel structure to be erected above the roof so the new roof insulation, air-source heat pump and solar photovoltaic (PV) panels could be installed with a minimum of disruption to the residents.

Other energy efficient measures included upgrading insulation, lighting, ventilation, and external wall insulation (EWI).

Not only are the residents now safer after new windows, doors and sprinkler system having been installed but they are warmer, thanks to new insulation measures too. They have benefitted from the extra energy that is provided by the solar PV panels. Residents have also felt a noticeable

difference in temperature of the building thanks to the air source heat pump and better ventilation to compliment the system.

The project team ensured the finished project would be sustainable and that fire safety, building ventilation and long-term resident welfare were carefully considered.

.....
“There are always steps we can take to reduce our carbon emissions and the effects of climate change”
.....

Councillor Ahsan Khan, Deputy Leader and Cabinet Member for Housing and Regeneration, said: “Southfield Court was an ambitious and collaborative project that transformed a four-storey, 40-flat hostel into sustainable housing where residents are now proud to live. It’s vital that all homes across the borough become more energy efficient. Reducing our carbon emissions from homes will help us future proof our properties and move closer to our net zero carbon ambitions.

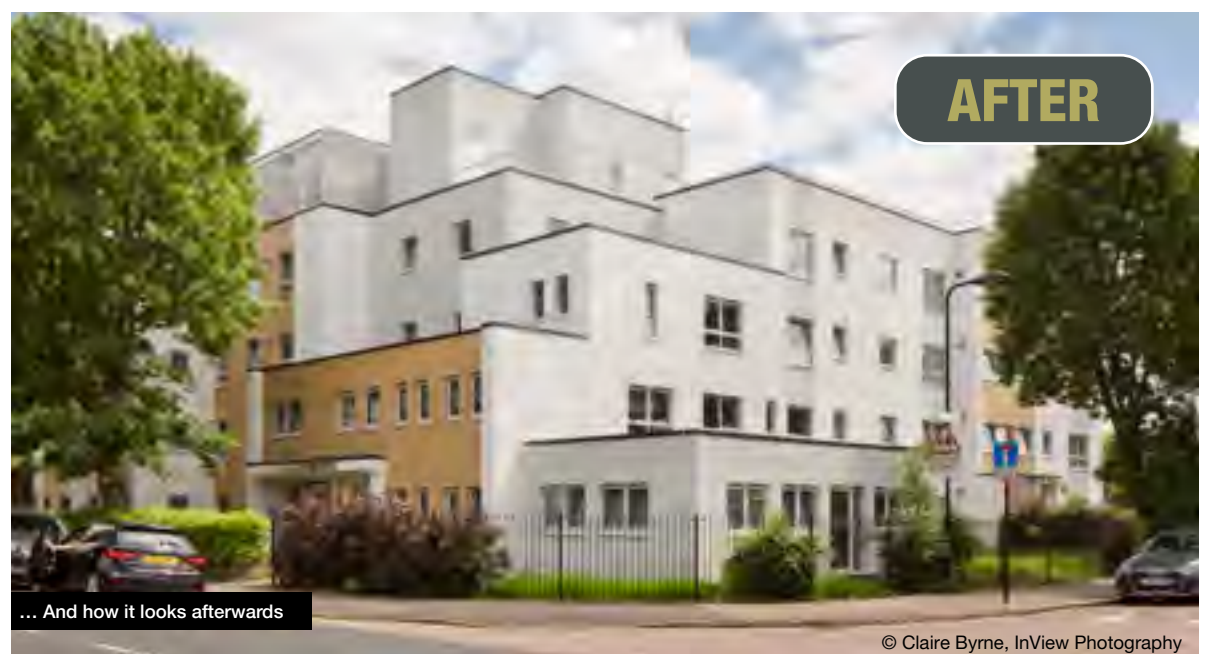
“While it may seem like an insurmountable task, there are always steps we can take to reduce our carbon emissions and the effects of climate change. With residents’ help and co-operation, we are taking a step closer to achieving our missions of tackling the housing crisis head on and leading the way for a net zero borough.”

More info

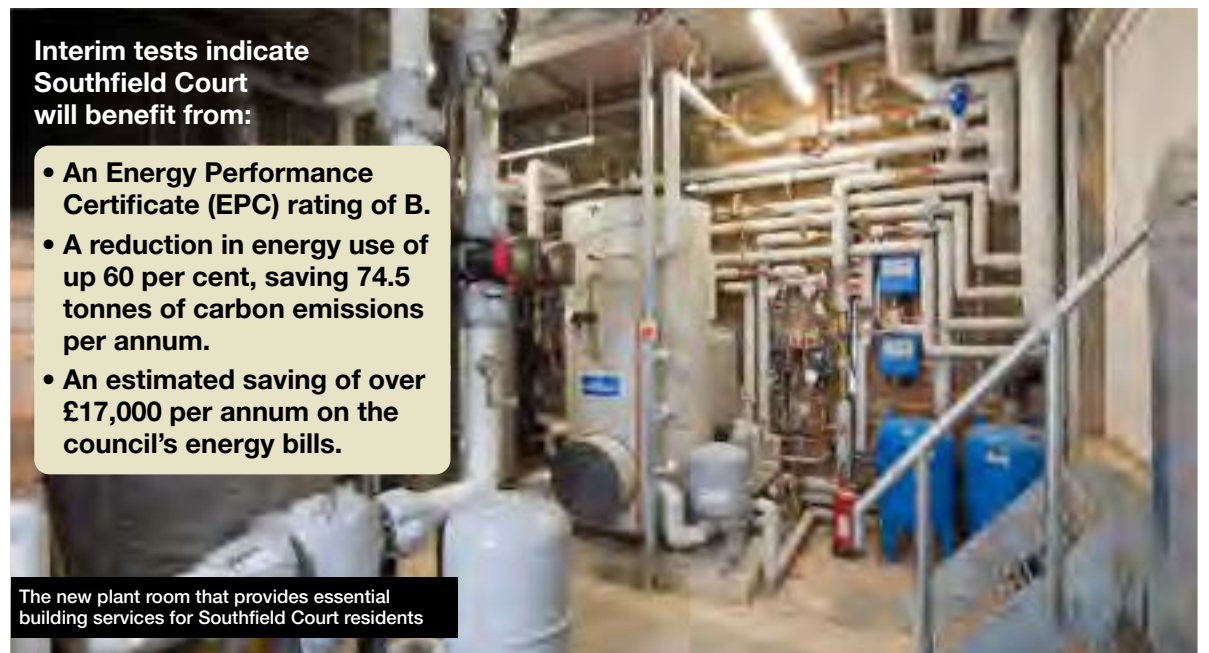
Get advice on simple steps you can take to make your home more energy efficient at bit.ly/RetrofitAdvice



BEFORE



AFTER



Interim tests indicate Southfield Court will benefit from:

- An Energy Performance Certificate (EPC) rating of B.
- A reduction in energy use of up 60 per cent, saving 74.5 tonnes of carbon emissions per annum.
- An estimated saving of over £17,000 per annum on the council's energy bills.

The new plant room that provides essential building services for Southfield Court residents

What's on in Waltham Forest

There's so much happening - don't miss out

New exhibition at William Morris Gallery coming soon

This autumn, William Morris Gallery will host William Morris & Art from the Islamic World, the first-ever exhibition exploring the influence of Islamic art on the work of William Morris (1834-1896), one of Britain's most iconic 19th-century designers and a key figure in the Arts and Crafts Movement.

Morris, known for his pioneering designs in wallpaper, fabrics, carpets, and embroideries, reshaped British interior aesthetics. While his admiration for Islamic art has been long acknowledged, this exhibition marks the first in-depth exploration of how these influences shaped his artistic journey.

The exhibition will showcase over 60 works, featuring Morris's designs alongside Islamic textiles, ceramics, metalwork and manuscripts from his personal collection, now belonging to institutions such as the British Library, Birmingham Museum, and the Fitzwilliam Museum, Cambridge.

This exhibition sets out to enrich our appreciation of Morris's work and broaden our

understanding of the underlying influences of this quintessentially British designer.

The William Morris Gallery is committed to supporting and strengthening its relationships with local community groups and networks. If you are a community organisation, charity, or social enterprise based in Waltham Forest, we are offering free community group tours throughout the exhibition run.

These tours offer a unique opportunity to explore and connect with the significance of Islamic art and celebrate the rich artistic heritage shared by many in Waltham Forest. Contact wmg.enquiries@walthamforest.gov.uk if you would like to hear more or to book a tour.

New exhibition opens Saturday 9 November and runs until Sunday 9 March 2025.

FREE entry, open Tuesday to Sunday, 10am to 5pm. Visit wmgallery.org.uk or follow us on Instagram [@morrisgallery](https://www.instagram.com/morrisgallery)



 WILLIAM MORRIS GALLERY

Town Hall Tours

Don't miss this unique opportunity to go behind the scenes at Waltham Forest Town Hall and enjoy an in-depth historical and architectural tour with expert guide Joanna Moncrieff.

Discover the Art Deco and Nordic Classicism styles, the William Morris details hidden around the building, and the working Council Chamber. Visit the gardens and admire the detailed sculptures by John Francis Kavanagh and The Arch by Henry Moore.

**Saturday 19 October
& Saturday 16 November.**

More dates to be released.

**Tickets from £10,
various times available.
Scan here to book.**



Cinematic experiences at The Town Hall

From November until the new year, Stow Film Lounge returns to the Town Hall for a takeover of The Foyer.

Showcasing a range of exciting and entertaining films for all tastes and ages including Screen Classics, Saturday Morning Pictures, Cult Movies and Modern Masterpieces.

Adult screenings on Friday evenings and Kids Cinema Club on Saturday mornings.

Follow [@fsqe17](https://www.instagram.com/fsqe17), [@stowfilmlounge](https://www.instagram.com/stowfilmlounge) on Instagram or visit stowfilmlounge.com



SKILLS TO LAST A LIFETIME

Save a spot with Better Swim School and give your child essential skills and confidence in and around water.



Better Swim School



Better is a registered trademark and trading name of GLL (Greenwich Leisure Limited), a charitable social enterprise and registered society under the Co-operative & Community Benefit & Societies Act 2014 registration no. 27793R. Registered office: Middlegate House, The Royal Arsenal, London, SE18 6SX. Inland Revenue Charity no. XR43398.

Have your say!

Proposed changes to parking arrangements



We are asking for your views on proposed changes to our Pay to Park arrangements across the borough

Pay to Park bays are on-street parking spaces that are mostly, but not exclusively, located close to town and shopping centres, or places like Whipps Cross Hospital. They do not include bays in car parks, or residents' parking bays in CPZ areas.

Currently, most Pay to Park bays in Waltham Forest charge from Monday to Saturday between the hours of 10am to 1pm and 2pm to 4pm, with an hour of free parking between 1pm to 2pm. The proposals would see these hours changed so charges apply from Monday to Sunday between 8am to 6.30pm. The proposed changes will also remove the current offer of 15 minutes' free parking in any Pay to Park bay.

The proposals would support our active travel commitments and bring Waltham Forest's parking arrangements in line with neighbouring boroughs.

No decision has yet been made. We are asking for your views to help us create a modern parking policy that meets the needs of everyone in our community.

To find out more and complete our consultation please visit bit.ly/WFPay2Park. Paper copies are available at **Chingford**, **Leytonstone**, and **Walthamstow** libraries. Your views are important to us. The consultation closes on **Monday 28 October**.

Consultation ends: **Monday 28 October 2024**



An advertisement for Lettings Waltham Forest. It features a large house-shaped graphic made of teal and purple geometric shapes. The background is an aerial view of a city. The text inside the house reads: 'WE WANT TO RENT YOUR PROPERTY!' followed by 'We're looking for all property sizes and can help you get professional tenants and current market rates paid'. The Lettings Waltham Forest logo is at the bottom.

WE WANT TO RENT YOUR PROPERTY!

We're looking for all property sizes and can help you get professional tenants and current market rates paid



Visit our **brand new website** to receive **0% management fees***

*Ts&Cs apply

To claim this offer scan the QR code or visit

www.lettingswalthamforest.gov.uk

and request your free valuation quoting 'LWFZERO'



Contact the team on 020 8496 4865 or e-mail lettingswalthamforest@walthamforest.gov.uk



Your route to urgent help

Feeling unwell?

Minor illnesses can often be treated at home with over-the-counter medication.



Need treatments?

Pharmacists are medical experts who can offer advice as well as medication.



Your surgery first!

Your GP surgery should usually be the first place you contact for all medical questions. You can also book out-of-hours GP appointments online or on the phone.



Contact 111

NHS 111 online provides help with a range of medical issues. They can connect you to an appropriate health professional for advice. They may also direct you to GPs, pharmacies, emergency dental services or other local services. If you can't go online call 111.

Dial 999

You should only call for an ambulance if you have a life-threatening medical emergency, or have a severe injury.



For more information on urgent care visit northeastlondon.icb.nhs.uk/urgentcare

or scan here



NHS

Protect yourself this winter

Getting the free vaccines is the best way to protect yourself from Covid and flu. Book yours now to stay protected this winter.



Who can get the vaccines?

You're eligible if you're:

- aged 65 or over
- a frontline health/social care worker
- clinically vulnerable
- pregnant
- a carer (flu vaccination only)

Not sure if you're eligible?

Go to [nhs.uk](https://www.nhs.uk) and search 'COVID-19' or 'flu vaccination'.

How can I get the vaccine?

Visit the website below or call 119 to book an appointment.



You can get your Covid vaccine at these pharmacies:

Chingford & Highams Park

1. Kingshead Chemist
2. Rosewood Pharmacy
3. Well Pharmacy
4. Mount Pharmacy
5. Well Pharmacy

Walthamstow

6. Higham Hill Pharmacy
7. Forest Chemist
8. Well Pharmacy
9. Well Pharmacy
10. The Pill Box
11. Britannia Pharmacy
12. Grove Pharmacy
13. Michael Franklin Pharmacy

Leyton & Leytonstone

14. Leyton Green Pharmacy
15. Medicos Pharmacy
16. Anji's Chemist
17. Leyton Orient Pharmacy
18. Leyton Pharmacy
19. Safedale Pharmacy



Flu vaccines are available at a number of pharmacies and GP practices in the borough. Visit the website below to find locations.

Have a question about getting vaccinated?

To speak to a clinician, call 0208 221 3127 or go to [woodgrangemedicalpractice.co.uk](https://www.woodgrangemedicalpractice.co.uk).



scan me

Book your vaccines and find more information about COVID-19 and flu at:

[walthamforest.gov.uk/covid-vax](https://www.walthamforest.gov.uk/covid-vax)



Can't say fairer than that

Helping you repair household items and save money

Across the borough, community-led initiatives are working to give local people the tools – often literally – to repair, repurpose, and reuse everyday household items, preventing them being thrown away.

More than 550 people have already attended one of our Reuse and Repair Fairs in Leytonstone, Leyton, and Highams Park, run in partnership with local group Artillery Arts.

“I want to highlight alternatives to throwing away and buying new, and encourage families to have new perspectives”

The fairs provide a platform for more than 20 organisations to support residents with everything from tool and electrical repairs to bike maintenance, software recycling, and much, much more.

Councillor Clyde Loakes MBE, Deputy Leader and Cabinet Member for Climate and Air Quality said: “We are committed to ensuring that residents have opportunities to reuse, recycle and repurpose items as an alternative to buying again or sticking in the bin for disposal. Thanks to all the organisations involved in helping support the fairs during 2024, and to everyone who attended.

“Our programme of Reuse and Repair Fairs are an excellent example of the embracing some of the core principles of the ‘circular economy’. They show the local community working alongside the council to deliver positive hyper-local climate action.”

Highams Park Pins and Needles, a group that offers members support and

friendship through knitting sessions, has been involved in the series of fairs.

Founder Alison Baker explains: “It all started when I retired and took up knitting after a 30-year break. I started making a jumper – I put a message on Facebook for some help as I was feeling a bit rusty and we created a group for knitting and repair. We started with only four, but now we have 60 regular attendees! We have a group that meet regularly at All Saints Church in Highams Park, as well as others at Wood Street Library and the Community Station Room, at Chingford Station.

“Our activities are all free and very informal. Participants bring their own knitting to get support with. We provide a bit of guidance and teaching where we can.

“We work with charities too and at the last Reuse and Repair Fair we created knitted squares for an organisation that provides blankets for homeless people.

“We use a lot of donated wool, yarn and we want to increase this sustainability even further by looking at ethically sourced material in the future.”

Play it Again Toys, another local group is also putting sustainability at the heart of its work, as founder Isobel Irwin explains: “I did a short course in toy invention and it opened my eyes to some of the issues around this industry, it’s similar to fast fashion.

“I want to help create an alternative to that in our local community, and we work as a toy surgery, where families can bring their toys along to be fixed and modified. It’s about prolonging the life of toys in a creative manner, highlighting value and involving families and children.

“Walthamstow has a great heritage around toy making



with two factories previously based here and I imagine that many of the workers were women, so I definitely feel an affinity.

“Creating excitement for families is really important and I want to highlight alternatives to throwing away and buying new, and encourage families to have new perspectives.”

The final Reuse and Repair Fair of the year will be taking place over the coming weeks. Check www.artillery.org.uk/reuse-repair for details of the event when it is announced.

More info

Find out more about Mission Waltham Forest and our commitment to climate action by visiting bit.ly/MissionWF



Take control of your health



ONLINE

We have launched an online portal that gives you secure access to your health record.

Once you've signed up, you'll gain access to a wealth of information, including your hospital appointments, documentation, and now, your laboratory blood results!

It's free and easy to use for all Barts Health NHS Trust patients.

For more information and to sign up to Patients Know Best, please scan the QR code.



Or visit: bartshealth.nhs.uk/patients-know-best



I'm looking for...

Safety, Love, Respect, Stability, Home, You.

Take the first step to becoming a Foster Carer and fill out our short form at:

fosteringwalthamforest.co.uk

We offer:



A competitive fostering package including pay of up to £554 per week, per child



Up to 66% taken off your Council Tax bill if you live in Waltham Forest



Join us

Join our online Fostering Information Event on Wednesday 6 November at 11am. Sign up at www.fosteringwalthamforest.co.uk

Waltham Forest are part of Local Community Fostering, a network of six northeast London boroughs aiming to inspire more people to become foster carers.



#BeTheOne

Foster



Make sure you're claiming Pension Credit

An estimated 3,300 local people are eligible for but do not claim Pension Credit

As we head towards winter, it's important to make sure you're receiving the help you may need with the cost of living.

Pension Credit gives you extra money to help with your living costs if you are over State Pension age and on a low income.

It's important to claim Pension Credit as soon as you can, four months before you reach state pension age.

There are an estimated 3,300 people in Waltham Forest who are eligible for Pension Credit but have not yet signed up to receive it.

As you may have heard, Winter Fuel Payments are

changing this year and will not be automatically given to everyone. Receiving Pension Credit will also mean you receive a Winter Fuel Payment.

If you are eligible for a Winter Fuel Payment due to the benefits you currently receive, such as Universal Credit or Income Support, you should receive a letter from the Department for Work and Pensions to confirm this. If this is the case, you will receive your payment automatically.

It's important to claim Pension Credit as soon as you can, four months before you reach state pension age. Payments can only be backdated by a maximum of three months.

Other benefits can also be linked to Pension Credit, including housing benefit, a free TV licence, and Council Tax reductions.



You can get help completing forms at local libraries

More info

Find out more, check if you're eligible, and apply at www.gov.uk/pension-credit or by phone on **0800 99 1234**. A friend or family member can call for you if you cannot use the phone.

If you are unable to apply online, by phone or post, you can get help with applying at our Pension Credit drop-in sessions, starting from **Monday 14 October** and continuing every Monday until Christmas from 1pm to 3pm at Walthamstow Library.

For more information about financial help, visit our website walthamforest.gov.uk and search for 'cost of living support'.

Volunteers needed – could you help?

Pension Credit drop-ins run thanks to volunteers, and we're looking for more Community Volunteers to help out – no experience is needed. You'll be helping people to fill out forms and providing guidance to ensure everyone gets the money they're eligible for. **Scan the QR code to find out more.**

If you know someone who may be eligible for Pension Credit, please do support them to check if they are eligible and to apply, as the help they receive could make a huge difference.



Could you volunteer at Walthamstow Library and help your community?

New project to tackle violent crime

Responding to residents' concerns

Waltham Forest residents consistently tell us that the fear of crime is a top issue for them, with knife crime being the highest concern. In response, the council has published its Serious Violence Strategy that outlines how it works with partners to tackle violent crime in the borough, including knife crime.

Although we have fewer violent crimes in our borough compared to the rest of London, the number of knife injury offences among under 25s has increased by nearly a third, up to 52 in July 2024 compared with 40 in July 2022, although it remains significantly lower than the peak of 98 in 2018.

We know that knife crime is not experienced equally by everyone. Nine out of 10 knife injury victims are male, and more than half of those aged under 18 are black. National data also shows that people who experience deprivation or childhood adversity are more

likely to be both victims and perpetrators of violence.

The Serious Violence Strategy shows how we work with our partners, including the Met Police, to try and address the root causes of violence and support people who have become victims by funding innovative, insight-led services.

One example is the A&E Navigators programme. When young people aged between 10 and 25 who have been victims of serious violence come into A&E, the Navigators step in to make sure they receive support once medical treatment is given.

“We are all united in our mission to make Waltham Forest a safer place for everyone”

There are currently two A&E Navigators embedded within Whipps Cross hospital emergency department.

A parent whose daughter received help from the A&E Navigators said: “The skills

[my daughter] gained and the confidence she built while participating in your activities have been invaluable... I believe it has made a lasting difference in her journey.”

One of the next steps included in the Serious Violence Strategy is to develop a new, dedicated, multi-agency team to work with those engaged in, or vulnerable to, gang violence. Additionally, trained chaperones will be employed to help keep children safe on routes to and from secondary school, at times and in areas where risk is greatest.

Cllr Khevyn Limbajee, Cabinet Member for Community Safety at Waltham Forest Council, said: “I want to thank all the residents, especially our young people and those with lived experience of the criminal justice system, who have generously contributed their time, energy, and insight to help shape our strategy. With your support we are all united in our mission to make Waltham Forest a safer place for everyone.”



Cllr Kizzy Gardiner and Cllr Khevyn Limbajee launch the Serious Violence Strategy.

More info

More information about how the council, its partners, and the community are working together to address serious violence can be found in the Serious Violence Strategy on walthamforest.gov.uk

Knife crime: The facts

To ensure we target our resources on supporting those residents and communities who are most affected by serious violence, we are committed to taking a data-driven approach to clearly understand how serious violence is experienced locally.

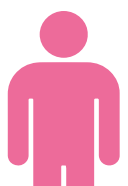


We have fewer violent crimes reported among adults and young people compared to the rest of London.

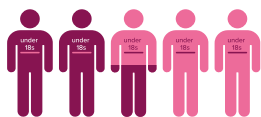
However, rates of knife crime are higher locally than in London overall for young people under 25 years, and even more so for those under 18.



9/10 knife injury victims are male.



Violence is clustered in known 'hot spots' across the borough which include locations within our town centres, and for young people, around and between schools.



Over the last year, more than half of knife injury victims aged under 18 years are of black ethnicity, despite only one in five under 18 residents being black.



Risk of violence increases at specific times and on particular days of the week, and for young people, is notably higher on school days and in the two-hour period after the school day finishes when footfall is high.



Chief Superintendent Rhona Hunt, North East BCU Commander, also welcomed the new strategy

Children's Services in Waltham Forest rated 'Good' with 'Outstanding' elements

Quality of social work practice strengthened for children and families since last full Ofsted inspection

Following a recent Ofsted inspection, Children's Services in Waltham Forest received an overall Good assessment rising to Outstanding in the experiences and progress of children in care.

The inspectors highlighted children in the borough "continue to receive good-quality services delivered by knowledgeable and committed social workers." Of particular note is the Outstanding rating for the experience and progress of children in care. The report found that "children in care make significant progress due to the outstandingly coordinated levels of support they receive, whether they live within the borough or further away."

Cllr Grace Williams, Leader of the Council, said: "I am very pleased that Ofsted recognises the progress we are making in how we are working to support

and care for our children. It's a real testament to the hard work and dedication of our children service's team, partners, and the whole council in supporting children and families in our borough.

"We play the extremely important role of corporate parent for more than 300 children.

.....
"We will continue to strive to provide the best possible support and services for children and their families and carers in Waltham Forest."
.....

"We will continue to strive to provide the best possible support and services for children and their families and carers in Waltham Forest."

The inspectors also found that "children and families benefit

from social workers who spend increased time with them, building meaningful relationships and overseeing plans which are purposeful and effective."

Cllr Kizzy Gardiner, Cabinet Member for Children and Young People, said: "We are committed to ensuring children across Waltham Forest are given every opportunity to thrive in life, and I'm delighted that that this commitment was reflected in the Ofsted report.

"I'd like to thank our hard-working social workers, all social care staff, and partners who strive to put children and their needs at the heart of their work. We are lucky to have such an amazing team helping young people make the very most of their life chances here in Waltham Forest.

"If you are interested in developing a rewarding career with us in Waltham Forest, we'd like to hear from you."



Could you become a social worker?

In Waltham Forest, we understand what good social work is worth and we are looking for skilled social workers to join our diverse and energetic teams.

We will invest in your development to help you find your specialty, providing you with a minimum of four hours of protected time each month for professional development.

We offer a competitive work package, flexible working arrangements, and a personalised training budget to help you reach your full potential in your new career.

More info

To see what social work roles are available and apply visit bit.ly/WFSocialWorkers

Growing community spirit

New nature garden designed with Lea Bridge schoolchildren

Families in Lea Bridge celebrated the completion of a vibrant new green space on Perth Road, E10 on Saturday 7 September.

Residents helped to put the finishing touches on the garden by planting and installing bird feeders.

Waltham Forest Council, along with architects what if: projects, worked with a group of local primary school students to help design the space which was then constructed by landscape designers Meristem Design.

The previously underused area has been transformed into a biodiverse oasis for

residents and local families over the summer following resident feedback as part of the Lea Bridge Area Framework.

The previously underused area has been transformed into a biodiverse oasis

Located opposite Sybourn Early Excellence Centre, the new garden has created an enriching educational space and peaceful retreat for both schoolchildren and the community to enjoy.

Earlier this year, local schoolchildren helped to design the nature garden through creative workshops.

The new space includes new trees and plants, as well as a small accessible enclosure suitable for learning about nature and habitats. A new step free gravel pathway connects the garden to Lea Bridge Road alongside

secluded seating spots, so parents, children, residents can enjoy the space.

A maintenance plan is in place for the new planting and there's still an opportunity for residents to get involved to keep the garden looking fresh.

The new garden was made possible by funds from

local housing growth and part-funded by the UK government through the UK Shared Prosperity Fund.

More info

Find out more about Lea Bridge improvements on the Let's Talk website: bit.ly/PerthRoadGarden



The community came together to make something beautiful on Perth Road



Children enjoy learning the value of nature and biodiversity

Forest Road update | Latest information on area improvement work

You may have wondered what's been happening at several sites along Forest Road as our plan to create fantastic places for residents and businesses to enjoy progresses.

Here are some updates on specific projects as well as the link for you to find out more.

817 - 823 Forest Road, former Texaco Garage site

Planning permission for this scheme was secured earlier this year and the site will become a new mixed-use building providing 39 new homes and commercial space on the ground floor.

Precision House, also known as Wood Street Families and Homes Hub

Situated on the corner of Wood Street and Forest Road, this appointment-based service centre for the local community will also provide affordable homes for Waltham Forest residents.

There will be 67 affordable new homes and a small commercial unit. The homes are completing this autumn and the hub set to complete in early 2025.

Fellowship Square

Earlier this year, the car park at the back of the Town Hall was transformed into a haven for wildlife alongside a place for calm and reflection with the new Queen Elizabeth II Memorial Garden and Sensory Garden.

More info

Find out all about major projects happening on Forest Road at bit.ly/ForestRoadUpdate



Your name is on the list

Local heritage that reflects our communities

On Thursday 19 September 2024, we celebrated the launch of the revised and updated Waltham Forest Local Heritage List at Stafford Hall, E17 with the community. It followed a public call for new nominations that took place earlier this year.

The event also included a small photo exhibition highlighting some of the borough's different types of

locally listed buildings.

The revamped list marks the many characterful and historic buildings, sites, and features found across Waltham Forest. It is now more inclusive and reflective of our residents and communities.

We received over 140 Local Heritage List nominations from the public and of these, 93 new additions have been made to the list.

Every area has seen at least one new addition and for the first time, the list includes examples of contemporary buildings, sites and features of high-quality design.

Why not explore the Local Heritage List and see what you can spot when you're out and about?

More info

Visit bit.ly/LocalHeritageList to find out more.

Image: Mike Fox



Northcote Arms, Leyton

Image: William MH



Kalli Amman Hindu Temple, Walthamstow

Image: Mike Fox



Mornington Hall, Chingford Green

Find your community at CRATE

Try something new and support local business

Have you visited CRATE St James Street yet?

Located near the St James Street overground station, it's a hive of activity where over 30 local businesses, eateries, and a pub are gathered under one roof.

It's a perfect place to browse, have a relaxed drink, and grab some food.

Get involved in a class

Classes and activities take place in the open space upstairs – so whether you want to try yoga, Tai Chi, jive dancing, African drumming, or spoken word, there's something for you.

During the colder months, the space is fully covered and has heaters to keep it cosy no matter the weather.

Try some delicious food and drink

The newest businesses at CRATE include Kottu House, serving up Sri Lankan street food and The G Bakery, with delicious pizza and Italian foods. Gather E17 run a weekly Saturday brunch club, providing delicious meals from a Michelin trained chef. Drop in at any time between 10am and 2pm to place your order, and eat in at CRATE or have it to go.

Support a local business

You can come to CRATE to get your bike fixed, buy a record or get pampered. For Dog Lovers are the latest business at CRATE who sell dog accessories, treats and grooming products.

Owner Lyuba even puts on a doggy brunch every weekend – and CRATE is a dog-friendly environment so do bring your four-legged friends!



Follow us on Instagram to keep up to date with what's on at CRATE:
www.instagram.com/cratesjs/



Tackling South Asian underrepresentation in professional football

New Leyton Orient supporters group Punjabi O's is pushing for real change in English football

South Asians make up approximately 7.5 per cent of the UK population. Yet, last season, only 22 out of a total 3,700 professional male footballers had South Asian heritage.

The Punjabi O's, an official new Leyton Orient supporters group led by founder Arvi Sahota, wants to break down barriers for fans attending matches.

This fits into Leyton Orient's ambition to make matchday more inclusive at Brisbane Road.

But beyond simply encouraging more of the community to attend matches, the Punjabi O's have a longer-term goal to tackle South Asian underrepresentation in professional football.

Leyton Orient recently announced a partnership with the Punjabi O's and Trehan Football, a thinktank led by Dev Trehan, to start this journey.

Arvi said: "We are here to shape the much-needed change in English football to make the game truly inclusive and representative. There's a lot of talk out there about this sort of thing, but nothing ever gets done. Leyton Orient is the first club that are actually doing something about this."

"We are here to shape the much-needed change in English football to make the game truly inclusive and representative"

Mark Devlin, Chief Executive of Leyton Orient, said, "Punjabi O's is a great start, but in this diverse part of London, how can we get more of the South Asian community in the stands, and how many young boys and girls can come through the various teams and start playing and representing Leyton Orient?"

The importance of representation cannot be understated for those wishing to emulate their heroes.

Pal Jay Panesar, lifelong Leyton resident and member of the Punjabi O's, said, "I've always loved football, but growing up, I couldn't see anyone who looked like me playing professional football. And it's still the case today – something has to change."

"Leyton Orient has always been a special club for me, as I've been able to walk down to games at Brisbane Road from an early age. I've had great memories there, and I'm pleased that the club have recognised us as an official group. Now, we can use this platform to make real change in football."

More info

If you are interested in learning more about the Punjabi O's and their work, email thepunjabios@hotmail.com



Punjabi O's hold up the flag at Barnsley away



At the Gaughan Group Stadium with the women's team



Leyton Orient players pose with Punjabi O's at the Community Day



Punjabi O's founder Arvi Sahota and Leyton Orient player Charlie Kelman pose with the flag at Community Day

Highways

LONDON BOROUGH OF WALTHAM FOREST

PROPOSED BOROUGHWIDE "PAY TO PARK" CHANGES (T72(24))

The Waltham Forest (Charged-For Parking Places) (Amendment No. X) Order 202*

The Waltham Forest (Free Parking Places, Loading Places and Waiting, Loading and Stopping Restrictions) (Amendment No. X) Order 202*

- NOTICE IS HEREBY GIVEN** that the Council of the London Borough of Waltham Forest propose to make the above-mentioned Orders under sections 6, 45, 46, 49 and 124 of and Part IV of Schedule 9 to the Road Traffic Regulation Act 1984, as amended.
- The general effect of the Orders would be to:
 - revise the operational hours (charging hours) at the existing parking places in the roads specified in the Schedule to this Notice. The location and type of parking place and existing and proposed hours of control are specified in the Schedule;
 - remove the free 15-minute parking period in all on-street pay-by-phone and pay-by-phone shared-use parking places; and
 - revise the hours of operation of waiting restrictions that apply in the pay by phone parking places in Greenleaf Road E17, Hatherley Road E17 and Station Road E4 as specified in the Schedule. There will be no changes to waiting restrictions applying in other parking places mentioned in this Notice.
- A copy of the Orders, the Council's statement of reasons for proposing to make the Orders and plans showing the locations and effect of the Orders and measures can be inspected on request by emailing traffic.scheme@walthamforest.gov.uk during normal office hours on Mondays to Fridays inclusive or online at: www.walthamforest.gov.uk/content/road-traffic-schemes-and-consultations.
- Any person desiring to object to the proposals or to make any other representation should use the online form available at: <https://walthamforestpaytopark.commonplace.is> or send a statement in writing of their objection or representation to Traffic Orders, Highways, Low Hall, Argall Avenue, London E10 7AS, or by emailing traffic.scheme@walthamforest.gov.uk, quoting scheme reference **T72(24) – Pay to Park Changes by 28th October 2024**. All objections and representations must specify the grounds on which they are made.
- For more information, please telephone 020 8496 3000, quoting: Traffic Orders **T72(24) – Pay to Park Changes**.

Dated **7th October 2024**

Mr. J. Griffin, Director of Neighbourhoods, Traffic Orders, Low Hall, Argall Avenue, London, E10 7AS

SCHEDULE

<ul style="list-style-type: none"> Pay by phone parking places 	
Existing operational hours: 8am to 1pm and 2pm to 6.30pm on Mondays to Fridays	Proposed operational hours: 8am to 6.30pm on Mondays to Sundays
Located in the following roads: E10 roads: Abbots Park Road, Belmont Park Road, Cheltenham Road, Church Road, Fletcher Lane, Francis Road, Hainault Road, Leigh Road, Matlock Road and Midland Road, E11 roads: Ashville Road, Central Avenue, Denmark Street, Elm Road, Grove Green Road and Hollydown Way.	
<ul style="list-style-type: none"> Pay by phone parking places with waiting restrictions in the same locations that apply outside the hours of operation of the parking places (no changes to waiting restrictions) 	
Existing operational hours: 10am to 1pm and 2pm to 6.30pm on Mondays to Saturdays	Proposed operational hours: 10am to 6.30pm on Mondays to Sundays
Located in the following roads: E11 roads: High Road Leytonstone	
<ul style="list-style-type: none"> Pay by phone parking places with waiting restrictions in the same locations that apply outside the hours of operation of the parking places 	
Existing operational hours: 10am to 1pm and 2pm to 4pm on Mondays to Saturdays Existing 'no waiting' hours: 7am to 10am on Mondays to Saturdays	Proposed operational hours: 10am to 6.30pm on Mondays to Sundays Proposed 'no waiting' hours: 7am to 10am on Mondays to Sundays
Located in the following road: E4 road: Station Road	
<ul style="list-style-type: none"> Pay by phone parking places with waiting restrictions in the same locations that apply outside the hours of operation of the parking places 	
Existing operational hours: 10am to 1pm and 2pm to 4pm on Mondays to Saturdays Existing 'no waiting' hours: 7am to 10am and 4pm to 7pm on Mondays to Saturdays	Proposed operational hours: 10am to 4pm on Mondays to Saturdays; 8am to 6.30pm on Sundays. Proposed 'no waiting' hours: no change
Located in the following road: E10 road: High Road Leyton	

<ul style="list-style-type: none"> Pay by phone parking places with waiting and loading restrictions in the same locations that apply outside the hours of operation of the parking places 	
Existing operational hours: 10am to 1pm and 2pm to 4pm on Mondays to Saturdays Existing 'no waiting and loading' hours: 7am to 10am and 4pm to 7pm on Mondays to Fridays	Proposed operational hours: 10am to 4pm on Mondays to Saturdays; 8am to 6.30pm on Sundays. Proposed 'no waiting and loading' hours: no change
Located in the following road: E17 road: Chingford Road	
<ul style="list-style-type: none"> Pay by phone parking places with waiting restrictions in the same locations that apply outside the hours of operation of the parking places 	
Existing operational hours: 8am to 9.30pm on Mondays to Saturdays and 10am to 9.30pm on Sundays Existing 'no waiting' hours: Midnight to 8am and 9.30pm to midnight on Mondays to Saturdays and Midnight to 10am and 9.30pm to midnight on Sundays	Proposed operational hours: 8am to 9.30pm on Mondays to Sundays Proposed 'no waiting' hours: Midnight to 8am and 9.30pm to midnight on Mondays to Sundays
Located in the following road: E17 road: Greenleaf Road and Hatherley Road	
<ul style="list-style-type: none"> Pay and display parking places 	
Existing operational hours: 8.30am to 6.30pm on Mondays to Saturdays	Proposed operational hours: 8am to 6.30pm on Mondays to Sundays
Located in the following road: IG8 road: Mill Lane	
<ul style="list-style-type: none"> Pay by phone parking places Shared-use (pay by phone or permit holders) parking places 	
Existing operational hours: 8am to 1pm and 2pm to 6.30pm on Mondays to Saturdays	Proposed operational hours: 8am to 6.30pm on Mondays to Sundays
Located in the following roads: E10 roads: Balmoral Road, Beaumont Road, Buckingham Road, Buckland Road, Kettlebaston Road, Lea Bridge Road, Osborne Road, Sanderstead Road, Shortlands Road and Windsor Road; E11 roads: High Road Leytonstone, Marchant Road, Trinity Close, Woodhouse Road; E17 roads: Gaywood Road, Higham Hill Road, Lea Bridge Road, Jewel Road, Northumberland Road, Orford Road, Palmerston Road, Renness Road, Rochdale Road, Ruby Road, Salcombe Road, St. Andrews Road, Theobald Road and Wingfield Road	
<ul style="list-style-type: none"> Pay by phone parking places Shared-use (pay by phone or permit holders) parking places 	
Existing operational hours: 10am to 1pm and 2pm to 4pm on Mondays to Saturdays	Proposed operational hours: 8am to 6.30pm on Mondays to Sundays
Located in the following roads: E4 roads: Albert Avenue, Albert Crescent, Bateman Road, Beech Hall Road, Beverley Road, Buxton Road, Carbis Close, Chingford Mount Road, Connaught Avenue, Connaught Road, Forest Approach, Frances Road, Garfield Road, Hale End Road, Hall Lane, Handsworth Avenue, Leonard Road, Mount Avenue, Normanshire Drive, Old Church Road, Queens Grove Road, Rolls Park Avenue, Royston Avenue, Selwyn Avenue, Springfield Road, Stanley Road, Station Road, Templeton Avenue, The Avenue, Westward Road and Winchester Road; E10 roads: Abbots Park Road, Adelaide Road, Brewster Road, Bromley Road, Brunswick Road, Canterbury Road, Colchester Road, Coopers Lane, Dagenham Road, Dunedin Road, Gloucester Road, High Road Leyton, Huxley Road, James Lane, King Edward Road, Lea Bridge Road, Leyton Park Road, Lyttelton Road, Maud Road, Millicent Road, Murchison Road, Sedgwick Road, Sidmouth Road, Skeltons Lane, St. Georges Road, St. Marys Road, Tyndall Road and Warren Road; E11 roads: Aylmer Road, Beachcroft Road, Belton Road, Burghley Road, Cathall Road, Church Lane, Davies Lane, Eve Road, Hainault Road, Harrington Road, Harrow Green, Harvey Road, High Road Leytonstone, Kirkdale Road, Lister Road, Michael Road, Mornington Road, Ranelagh Road, Steele Road and Vernon Road; E15 roads: Borthwick Road, High Road Leytonstone, Janson Road and Morris Road; E17 roads: Bakers Avenue, Barrett Road, Belgrave Road, Boundary Road, Brandon Road, Canning Road, Chingford Road, Clarendon Road, Clifford Road, Coleridge Road, Copeland Road, Corbett Road, Cuthbert Road, Eastfield Road, Gainsford Road, Granville Road, Grove Road, Havant Road, Hoe Street, Kingsley Road, Lea Bridge Road, Linford Road, Livingstone Road, Marlowe Road, Melbourne Road, Palmerston Road, Poplars Road, Queens Road, Russell Road, Somerset Road, Walpole Road, Waverley Road, Wood Street and Woodlands Road	

<ul style="list-style-type: none"> • Pay by phone parking places • Shared-use (pay by phone or permit holders) parking places 	
Existing operational hours: 10am to 1pm and 2pm to 4pm on Mondays to Fridays	Proposed operational hours: 8am to 6.30pm on Mondays to Sundays
Located in the following roads: E11 roads: Calderon Road, Frith Road, Goodall Road, Langthorne Road, Leslie Road, Millais Road and North Birkbeck Road; E15 roads: Amethyst Road, Cranbourne Road, Crownfield Road, Downsell Road, Drapers Road, Etchingham Road, High Road Leyton, Nutfield Road, Stewart Road and Westdown Road	
<ul style="list-style-type: none"> • Shared-use (pay and display or MW permit holders) parking places 	
Existing operational hours: MW CPZ permit holders: 8am to 6.30pm on Mondays to Saturdays or pay and display: 10am to 5pm on Mondays to Saturdays	Proposed operational hours: MW CPZ permit holders or pay and display: 8am to 6.30pm on Mondays to Sundays
Located in the following roads: E17 roads: Buxton Road, Carisbrooke Road, Coppermill Lane, Leucha Road, Maude Road and Pretoria Avenue	
<ul style="list-style-type: none"> • Shared-use (pay by phone or market trader permit holders) parking places 	
Existing operational hours: market trader permit holders: 8am to 2pm on Mondays to Saturdays and pay by phone or market trader permit holders: 2pm to 9.30pm on Mondays to Saturdays	Proposed operational hours: market trader permit holders: 8am to 2pm on Mondays to Saturdays and pay by phone or market trader permit holders: 2pm to 9.30pm on Mondays to Saturdays and 8am to 6.30pm on Sundays
Located in the following roads: E17 roads: Eldon Road, Erskine Road, Gillards Way, Storey Road, Truro Road, Vernon Road and Westbury Road	
<ul style="list-style-type: none"> • Shared-use (pay by phone or market trader and MW permit holders) parking places 	
Existing operational hours: market trader permit holders: 8am to 1pm on Mondays to Saturdays and pay by phone or market trader or MW permit holders: 2pm to 6.30pm on Mondays to Saturdays	Proposed operational hours: market trader permit holders: 8am to 2pm on Mondays to Sundays and pay by phone or market trader or MW permit holders: 2pm to 6.30pm on Mondays to Sundays
Located in the following road: E17 road: Mission Grove	
<ul style="list-style-type: none"> • Shared-use (pay and display or market trader and MW permit holders) parking places 	
Existing operational hours: market trader permit holders: 8am to 2pm on Mondays to Saturdays and pay and display or market trader or MW CPZ permit holders: 2pm to 6.30pm on Mondays to Saturdays	Proposed operational hours: market trader permit holders: 8am to 2pm on Mondays to Sundays and pay and display or market trader or MW permit holders: 2pm to 6.30pm on Mondays to Sundays
Located in the following roads: E17 roads: Buxton Road, Carisbrooke Road and Pretoria Avenue	

metres permit parking (previously proposed in October 2022 to remove 14.5m between Nos. 6 and 8 WD); and

b. south-east side,

i. between Nos. 11 and 15 WD, by displacing 13 metres permit parking space

ii. outside the flank wall of No. 80 Colworth Road and displace 13.4 metres of permit parking space (as amended from the proposals in October 2022 from the opposite site of the road outside the flank wall of No. 82 Colworth Road); and

iii. outside Nos. 23 and 25 WD and displace 6 metres of permit parking space.

3. FURTHER NOTICE IS HEREBY GIVEN

that the following restrictions on the east side of **Wood Street E17** have been made under section 6 of the RTRA 1984, as proposed on 29th February 2024:

a. convert part-time no-loading restrictions to no-loading "at any time" between the southern kerb line of Forest Road E17 and point 16 metres south (before the inset area);

b. convert no-loading restrictions operating Mon-Sat 8am to 6.30pm to no-loading Mondays to Saturdays 7am to 10am and 4pm to 7pm, between a point 16 metres south of the southern kerb line of Forest Road and a point 39 metres south of that said junction (the inset area); and

c. maintain the no-loading restrictions operating Mon-Sat 8am to 6.30pm between a point 39 metres south of the southern kerb line of Forest Road and the southern kerb line of Corbett Road (current arrangement after the inset area).

3. Copies of the Orders, which will come into operation from **9th October 2024** and all other relevant documents can be inspected until the expiration of a period of 6 weeks from that date on request by either emailing traffic.scheme@walthamforest.gov.uk, or visiting the Highways and Traffic Management office (*by appointment), Low Hall, Argall Avenue, E10 7AS during normal office hours on Mondays to Fridays inclusive, or alternatively documents can be viewed online at: www.walthamforest.gov.uk/content/road-traffic-schemes-and-consultations.

4. Any person desiring to question the validity of the Orders or of any provision contained therein on the grounds that it is not within the relevant powers of the Road Traffic Regulation Act 1984, or that any of the relevant requirements thereof or of any relevant regulations made thereunder has not been complied with in relation to the Orders may, within six weeks of the making of the Orders, make application for the purpose to the High Court.

*For more information please telephone 020 8496 3000 quoting reference Traffic Orders – **T49c(22) – Flood mitigation and BLEN residual parking amendments and T16(24) Minor batch 1.**

Dated 7th October 2024
Mr. J. Griffin, Director of Neighbourhoods, Traffic Orders, Low Hall, Argall Avenue, London, E10 7AS

LONDON BOROUGH OF WALTHAM FOREST

ROAD TRAFFIC REGULATION ACT 1984 (RTRA)

BOROUGHWIDE MISCELLANEOUS NO WAITING AND PARKING CHANGES - MINOR BATCH 4, 2024

REDUCTION OF PERMIT PARKING, PROVISION OF NO WAITING RESTRICTIONS AND FORMALISED DISABLED PERSONS PARKING, AND MINOR CORRECTIONS TO ORDER SCHEDULES TO ALIGN WITH EXISTING ON-STREET ARRANGEMENTS (T66(24))

The Waltham Forest (Charged-For Parking Places) (Amendment No. *) Order 20*

The Waltham Forest (Free Parking Places, Loading Places and Waiting, Loading and Stopping Restrictions) (Amendment No. *) Order 20*

1. NOTICE IS GIVEN that the Council of the London Borough of Waltham Forest proposes to make the above-mentioned Orders under sections 6, 45 and 124 of and Part IV of Schedule 9 to the RTRA, as amended.

2. The general effect of the Orders would be in:

(a) Stirling Road (SG) E17

– **south-west side** – to convert the whole single yellow line waiting restrictions (syl) between Nos. 49 and 59 SG (across the entrance to Wigmore Place) to double yellow line "at any time" waiting restrictions (dyls).

(b) Low Hall Lane (LHL) E17 – north-west side – to remove the permit parking place opposite the flank wall of No. 1 Albany Road and replace with dyls.

(c) Ruby Road (RB) E17 – west side – to remove 6.6 metres of permit parking space outside Nos. 21 and 23 RB and replace with a disabled persons parking place operational "at any time".

(d) Yardley Lane (YL) E4 – (southernmost west to east arm)

(i) south side – to provide a disabled persons only parking place 6.6mts in length outside nos. 48/54 YL;

(ii) to provide dyls in the following locations:

i. north side – between the eastern kerb line of the north/south arm of YL (section in line with Boardman Avenue) and its north easternmost extremity;

ii. the north easternmost extremity – all

iii. south side – (1) between a point opposite the eastern kerb line of the north/south arm of YL (section in line with Boardman Avenue) eastwards for a distance of 12.5 metres Nos. 24/26 YL (joining the existing dyls), (2) outside Nos. 28/30 YL for a distance of 3 mts, (3) outside Nos. 36/38 for a distance of 3mts, (4) outside Nos. 44/46 for a distance of 3mts, and (5) outside Nos. 52/54 in an east then north-easterly direction to its north-easternmost extremity, and (6) between Nos. 2 YL and 234 Sewardstone Road for a distance of 3.8 metres.

(i) east and south-east side – to convert the syl to dyls between its junction with Forest Road and No.22 HW;

(ii) west and north-west side – i. to the north of No. 21 HW remove 9.75m of 'HS' permit holders only parking space (3.5m) and syl (6.25m) combined and replace with dyls;

ii. to convert 3m of syl at its northeastern extremity (near its junction with Forest Road) to dyls.

3. FURTHER NOTICE IS HEREBY GIVEN that the Council under the same RTRA sections mentioned in item 1 propose to make minor amendments/corrections to order map schedules and to create new orders in:

(a) Spruce Hill Road E17 (SHR) – north side and section of western extremity – convert section of dyls outside No. 81 SHR to a single yellow line operating to CPZ hours for SHR.

(b) Livingstone Road E17 – south-east side – convert syl to dyls across the rear access of No. 377 Hoe Street.

(c) Beverley Road E4 – north-west side - removal of a syl outside No. 1 replaced with permit parking space for HPS permit holders only operating Mon-Fri 8am – 6.30pm;

(d) Blackthorne Drive E4 (BD) – dyls:

(i) south-west side – between its junction with Hatch Lane and a point 4.7 metres south of the north-west facing wall of No. 2 BD

(ii) north-east side - between its junction with Hatch Lane and a point in line with the north-west facing wall of No. 21/23 Hatch Lane.

(e) Carisbrooke Road and Buxton Road E17, remove duplicated parking provisions on map tile schedules. No changes will be made on the highway regarding the administrative changes mentioned in paragraph 3 above.

4. Copies of the Orders and the Council's statement of reasons for proposing to make the Orders and plans showing the locations and effect of the Orders can be inspected on request by either emailing traffic.scheme@walthamforest.gov.uk or visiting (*by appointment) the Highways and Traffic Management office, Low Hall, Argall Avenue E10 7AS during normal office hours on Mondays to Fridays inclusive; or alternatively documents can be viewed online at:

www.walthamforest.gov.uk/content/road-traffic-schemes-and-consultations

5. Any person desiring to object to the proposals or to make any other representation should send a statement in writing of either their objection and the grounds thereof or of their representation to; **Traffic Orders, Highways and Traffic Management, Low Hall, Argall Avenue, London, E10 7AS**, or by emailing: traffic.scheme@walthamforest.gov.uk quoting scheme reference – **T66(24) – Minor batch 4 – 2024 Boroughwide miscellaneous highway provisions and amendments** by the end of a period of 21 days from the date on which this Notice is published. All

LONDON BOROUGH OF WALTHAM FOREST
ROAD TRAFFIC ACT 1984 SECTIONS 6 AND 45

WADLEY ROAD E11, FLOOD MITIGATION, PROVISION OF "AT ANY TIME" WAITING RESTRICTIONS AND REDUCTION AND REMOVAL OF PARKING SPACE TO ACCOMMODATE RAIN GARDENS AS AMENDED (T49a and c(22)). WOOD STREET E17 NEW LOADING BAY (T16(24)).

The Waltham Forest (Charged-For Parking Places) (Amendment No. 225) Order 2024

The Waltham Forest (Free Parking Places, Loading Places and Waiting, Loading and Stopping Restrictions) (Amendment 222) Order 2024

1. NOTICE IS GIVEN that the London Borough of Waltham Forest on **7th October 2024** made the above-mentioned Orders under sections 6 and 45 and 124 of and Part IV of Schedule 9 to the Road Traffic Regulation Act 1984, as amended.

2. The general effect of the Orders and other measures to allow for flood mitigation will be in **Wadley Road E11 (WD)** to provide double yellow line "at any time" waiting restrictions:

a. north-west side,

i. between Nos. 14 to 16 WD, by displacing 6 metres permit parking space (previously proposed in October 2022 to remove 13m between Nos. 12 to 16 WD);

ii. outside Nos. 6 WD, by displacing 8.5

objections must specify the grounds on which they are made.

For more information, please telephone 020 8496 3000 quoting: Traffic Orders – **T66(24) – Minor batch 4 – 2024 Boroughwide miscellaneous highway provisions and amendments and the site location.

Dated 7th October 2024

Mr. J. Griffin, Director of Neighbourhoods, Traffic Orders, Low Hall, Argall Avenue, London, E10 7AS

LONDON BOROUGH OF WALTHAM FOREST

ROAD TRAFFIC REGULATION ACT 1984 - SECTION 14(1)

THE WALTHAM FOREST (THAMES WATER INSTALLATION AND MAINTENANCE) (TEMPORARY MEASURES) (E10 AND E4 ROADS) (NO. 1) ORDER 2024

The Council of the London Borough of Waltham Forest **HEREBY GIVES NOTICE** that on **7th October 2024** it made an Order to allow for the installation and maintenance of Thames Water infrastructure to be carried out in a safe and efficient manner in roads within the E10 and E4 regions.

The general effect of the Order will be, only at such times and to such extent as regulatory signs are displayed, to prohibit vehicles from entering, proceeding, waiting or loading for any purpose, at any time, in

i) **Alexandra Road E10** – between the common boundaries of Nos. 4/6 and of Nos. 14/16;

ii) **Buxton Road E4** – between its junction with Station Road and the rear boundary of 62 Station Road;

iii) **Manor Road E10** – between its junction with Lea Bridge Road (LBR) and the northwest facing wall of No. 458 LBR.

Whilst the restrictions referred to in paragraph 2(i) above remain in force, the no-entry restriction and one-way working in **Alexandra Road E10** shall be suspended.

Whilst the restrictions referred to in paragraph 2(iii) above remain in force,

i) the one-way working in **Manor Road E10** (MNR) (the section north of Capworth Street) shall be suspended; and

ii) waiting or loading by vehicles shall be prohibited between the northwest facing wall of No. 458 LBR and the

common boundary of Nos. 147/149 MNR.

Vehicles waiting or loading in disregard of the Order would be removed.

The restrictions mentioned above would not apply in relation to any vehicle being used:

(a) in connection with the said works; or

(b) for ambulance, fire brigade or police purposes (if the works allow).

The Order will come into operation on **21st October 2024** for a maximum period of 6 months or until the works are completed, whichever is the sooner.

NOTE: These works would not occur simultaneously in all roads. Signage will be placed in advance of any works which would give more specific details on the exact dates of the prohibitions, effects of any temporary traffic management and diversion routes as necessary. The works in Alexandra Road are expected to be completed within 5 days, in Buxton Road within 2 days, and in Manor Road within 3 days however the Order has been extended to allow for any contingencies. (ref: TT62(24))

Dated 7th October 2024

Mr J Griffin, Director of Neighbourhoods, Traffic Orders, Low Hall, Argall Avenue, London, E10 7AS

LONDON BOROUGH OF WALTHAM FOREST

ROAD TRAFFIC REGULATION ACT 1984 - SECTION 14(1)

THE WALTHAM FOREST (TW AND UKPN SUPPLY CONNECTIONS) (TEMPORARY PROHIBITIONS) (SIMMONS LANE E4) (NO. 1) ORDER 2024

The Council of the London Borough of Waltham Forest **HEREBY GIVES NOTICE** that it intends on making an Order to allow for the electricity and water mains connections to a new development in Simmons Lane E4 to be carried out in a safe and efficient manner.

The general effect of the Order would be, only at such times and to such extent as regulatory signs are displayed, to prohibit vehicles from entering, proceeding, waiting or loading for any purpose, at any time, in **Simmons Lane E4** – between its junction with Larkshall Road and the

west-facing boundary of No. 72.

Vehicles waiting or loading in disregard of the Order would be removed.

The restrictions mentioned above would not apply in relation to any vehicle being used:

(a) in connection with the said works; or

(b) for ambulance, fire brigade or police purposes (if the works allow).

The Order would come into operation on **19th October 2024** and would be valid for a maximum period of 6 months or until the works are completed, whichever is the sooner.

NOTE: Signage will be placed in advance of any works which would give more specific details on the exact dates of the prohibitions, effects of any temporary traffic management and diversion routes as necessary. The works are expected to be completed within 7 days however the Order has been extended to allow for any contingencies. (ref: TT63(24))

Dated 7th October 2024

Mr J Griffin, Director of Neighbourhoods, Traffic Orders, Low Hall, Argall Avenue, London, E10 7AS



Waltham Forest



ADVERTISING

NEWS

DID YOU KNOW?
WALTHAM FOREST NEWS...

IS THE LARGEST NEWSPAPER IN THE BOROUGH

HAS A CIRCULATION OF 120,000 EVERY ISSUE

IS DELIVERED TO EVERY HOUSEHOLD IN WALTHAM FOREST

ADVERTS START FROM JUST £180

THERE'S NEVER BEEN A BETTER TIME TO ADVERTISE.

Talk to us for a free consultation on how we can boost your business, contact us now:

ADVERTISINGWFN@WALTHAMFOREST.GOV.UK



OPEN DAY

SATURDAY 23RD NOVEMBER 2024 10AM - 1PM



LEARN



CONNECT



DESIGN

Learn with skill | Feel connected | Design your future

+44 (0) 208 5233 544 info@sgmc.ac.uk



/monouxcollege



@monouxcollege



/monouxcollege

WWW.SGMC.AC.UK

COMING IN 2025.....



**FEB
14th**



**APR
18th**



**JUN
13th**



FEB



**MAY
21st**



**JUL
2nd**



**MAR
22ND**



**MAY
30th**



**JUL
11th**



**APR
4th**



**JUN
13th**



**JUL
25th**

OUR PRICES

Peak Pricing

(Tuesday – Thursday after 5pm, Friday - Saturday all day, Sunday before 5pm.)

- Adult: £7.95
- Seniors / Students: £6.95
- Child: £5.95
- Family x2: £11.95

*Includes One Adult, One Child

Off Peak Pricing

(Tuesday – Thursday before 5pm, Sunday after 5pm)

- Adult: £6.95
- Seniors / Students: £6.95
- Child: £5.95
- Family x2: £10.95

*Includes One Adult, One Child

WHY NOT TRY

**Bargain Mondays
All Films, All Day**

£5