

Signs for Birds

CLIENT / PROJECT TEAM

London Borough of Waltham Forest Highways team

KEY STAKEHOLDERS

LB Waltham Forest
Environmental Agency
Lee Valley Park Authority
Residents in the Coppermill Area
Coppermill Primary School
Project Zero and the Outset Centre
Residents and businesses located around Frederic Street.

DESIGN TEAM

Architects : what if: projects Ltd
Graphic Design consultants: Europa

01 Project background

BACKGROUND

The art initiative is part of The Coppermill Area scheme (CLN) and the commission focuses on two distinct areas: Coppermill Lane and the flood relief bridge; and the Frederic Street and Grange Road environment. The project is funded by TfL.

Previous phases of the scheme were developed in dialogue with local residents and include a broad range of new public realm, SUDs, active travel and highways improvements. Coppermill Lane, with its' direct link to Walthamstow Wetlands forms the main focus to the scheme.

Coppermill Lane bridge environment

The bridge and its' immediate environment has been identified as a key transition point between residential areas and Walthamstow Wetlands. The bridge deck is an unwelcoming space for pedestrians and the heightened footway kerbs restrict accessibility to the bridge deck area on the north side. Footway finishes and the bridge parapets are poorly maintained and require repair and attention.

Frederic Street and Grange Road

Frederic Street and Grange Road are 'no-through' routes that are connected via a narrow driveway. Both roads link to the commercial high-street in the St. James Street area. Footway areas are mostly bounded by high brickwork walls and the area has attracted high-levels of fly-tipping.

BREIF

The Art Initiative, developed in collaboration with young people and residents in the Coppermill Area aims to bring light-touch and impactful improvements to these two environments. Key objectives are to develop a distinct visual identity that brings colour, a sense of interest and a sensitive response to the local context. Deliverables include:

- Review existing artworks at the flood relief bridge.
- Provide outline remedial work proposals for the flood relief bridge and Grange Road passageway.
- Develop ideas and proposals for new visual identities in both environments - ideas that help to assist orientation, wayfinding and place-making.
- Provide co-creation workshop(s) with young people in the area and dialogue with local residents and business.

PROJECT MILESTONES

Stage 1 / Feasibility		
01	Site surveys / investigations	Feb
02	Feasibility study / consultation	Feb/Mar
03	Refine project brief and scope	Feb/Mar
04	Outline ideas	Mar/ Apr
Stage 2 / Design development		
06	Remedial works proposals	Apr
07	Engagement program	Mar/Apr
08	Deliver co-creation workshops	July
09	Design development	Mar/ Jul
10	Cost analysis	Jun/Jul
Stage 3 / Production information		
11	Final design package	Sept
12	Pre-installation info pack	Oct
13	Procurement	Oct/Nov
Stage 4 / Installation		
14	Site preparation and installation	Nov

ENGAGEMENT ACTIVITIES

Stage 1		
01	Consultation with LVRPA	06.03.24
02	Consultation with residents	24.04.24
Stage 2		
03	Consultation with Wetlands specialists	09.05.24
04	Workshop 1 with Project Zero	14.05.24
05	Workshop 2 with Project Zero	21.05.24
06	Workshop 3 with Project Zero	28.05.24
07	Workshop 4 with Project Zero	11.06.24
08	Workshop with Coppermill Primary School	15.07.24
09	Workshop with Coppermill Area Residents	20.07.24

 completed  to be completed

02 Site analysis and feasibility

COPPERMILL LANE AND LADDER STREETS

As a starting point we consider Coppermill's relationship with nature and wildlife, from the diverse species of the Wetlands to the inhabitants of local green spaces, street trees and rainwater gardens. It explores the idea of sharing space with nature and our encounters with wildlife.

Artwork scope

The proposed scope or canvas for the new art interventions includes highways areas and highways components and furniture such as lamp-posts, boundary walls or railings. Areas of focus include the bridge, the Coppermill Lane route and the "Ladder Streets".

Coppermill Lane includes two existing art projects developed with local residents: the Plinth project; Split-leaf project.

Split-leaf sculpture

During the early stages of consultation with residents we discussed options for the removal and re-siting of the "Split-leaf" sculptures from the flood relief bridge. Residents had few concerns, however suggested that all those involved in creating the work: the schools, organisations and artist are all acknowledgement of these proposals.

Other elements?

Re-imagining the art plinths

- 3D objects mounted to the existing fixing locations
- continuing the theme of encounters with nature?

Plan removal of the split-leaf sculptures?

- improve accessibility to the north bridge deck
- make way for any future improvements to the bridge deck

Coppermill Art Initiative
'Coppermill streets' strategy

Encounters with nature and wildlife

- relationship with nature and wildlife species at the Wetlands and the wider Lee Valley
- links to local green spaces and gardens
- sharing space in the coppermill environment

Co-created with the local community

- creative workshops open to local people
- work with diverse groups
- the Mill, Coppermill Primary school, 1B Window gallery

coppermill area stats:

- 4100 + households**
- 2000 + tufted ducks**
- 54 species of birds**
- 500M litres drinking water /day**

Scope for artworks

Series of interventions extending out from the flood relief bridge with focal points at Coppermill's green, communal and educational spaces:

- the "Ladder Streets"
- flood relief bridge deck
- Coppermill Lane
- gateways at the tunnel and St. James Street junction

Key:

- Wayfinding
- Area scope
- Key stakeholders
- ▲ Gateways
- Strategic routes
- Community buildings
- Coppermill area

A01 The Mill Community Centre
A02 Coppermill Primary School
A03 Douglas Eyre Sports Centre

B01 Plinth 1
B02 Plinth 2

Scope for artworks

LBWF Highways infrastructure and boundaries

- boundary walls and garden walls
- boundary fences
- bollards and railings
- lamp columns and signposts
- other street furniture

Key:

- Focal points
- Raingardens
- Coppermill All streets
- Timber bollards
- Metalwork bollards
- Street lamp (+7.5m)
- Street lamp (+4.5m)
- Street lamp (+12.0m)
- Telegraph poles (+9.0m)

Project canvas

Site Analysis / Feasibility Studies

Theme development, scope for artworks, highways areas and furniture, canvas typologies, existing artworks along Coppermill Lane.

03 Design development

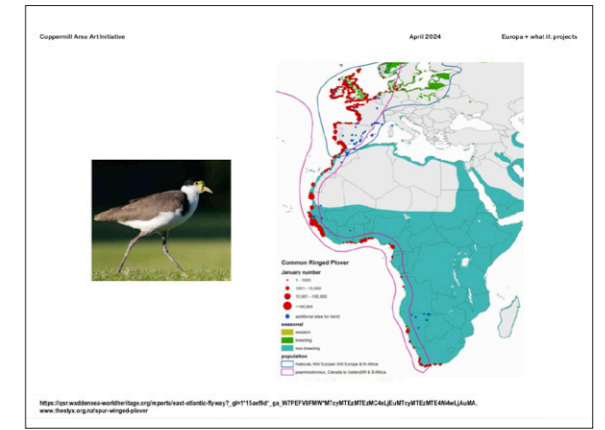
‘SIGNS FOR BIRDS’

Birds come to Walthamstow Wetlands for a variety of reasons – to feed; to breed; to roost or to moult. Birds visit all through the year and share their space with residents of the Coppermill Area in Waltham Forest.

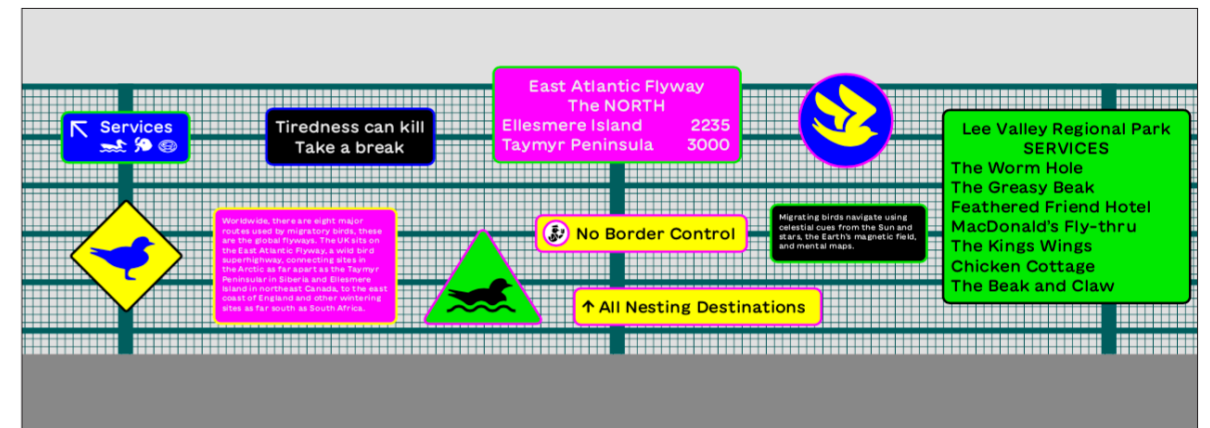
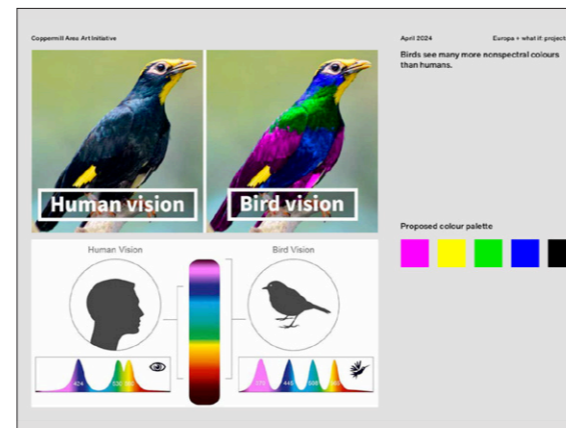
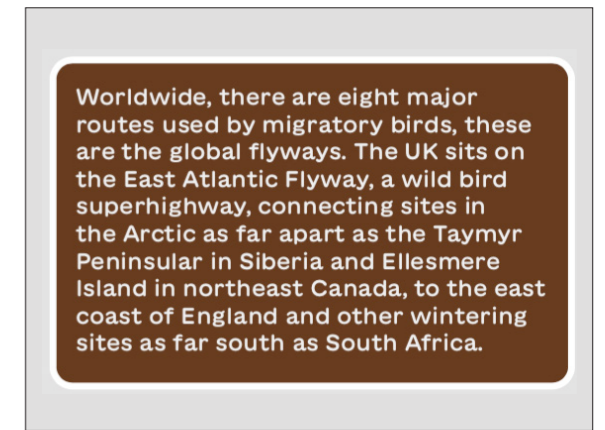
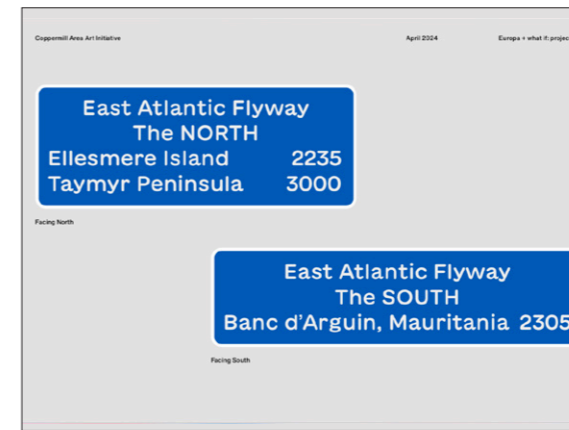
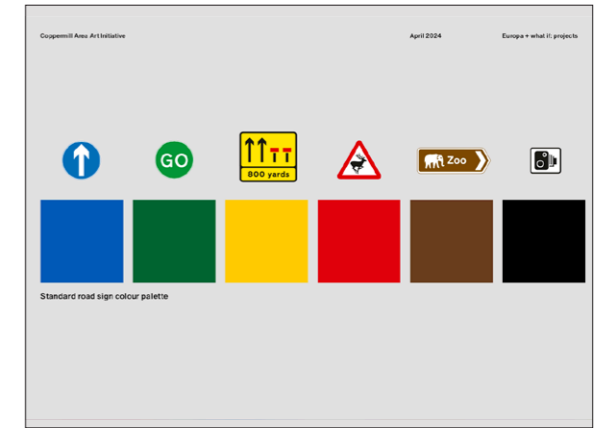
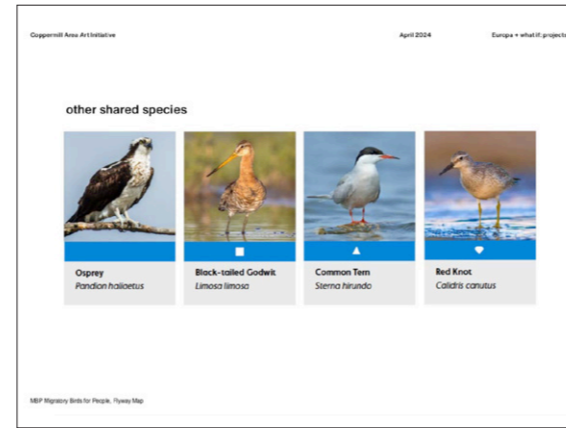
Arriving from their migratory journeys along the East Atlantic Flyway, birds are particularly attracted to the areas of open water and islands. In winter, wildfowl come from the South to the UK and by springtime many will have gone back but others such as warblers, terns, martins and swift come North to breed here, returning south before winter.

‘Signs for Birds’ is about navigating bird species toward the rich and diverse natural environments in the Coppermill area. The new signs are inspired by highway sign typologies and adopt similar instructions or directional information.

The ambition is to strategically place these new signs along Coppermill Lane and through the adjacent “Ladder Streets”. The initiative invites the public to get involved in the co-creation of the work and to come up with creative ideas for signs for humans and birds.



Signs for Birds, Europa



04 Engagement program

'SIGNS FOR BIRDS' ACTIVITIES

Early consultations

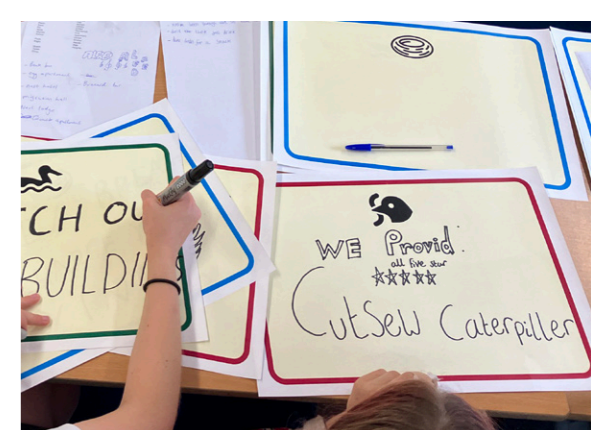
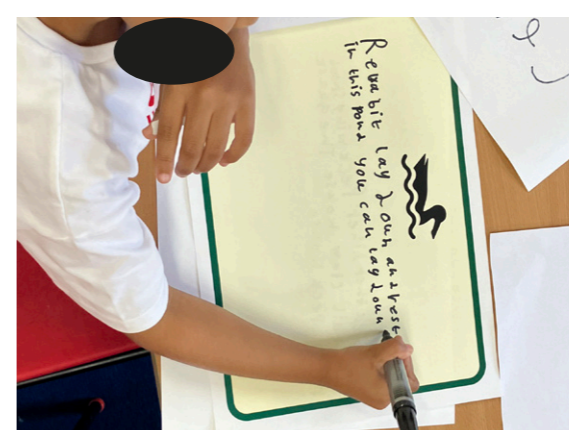
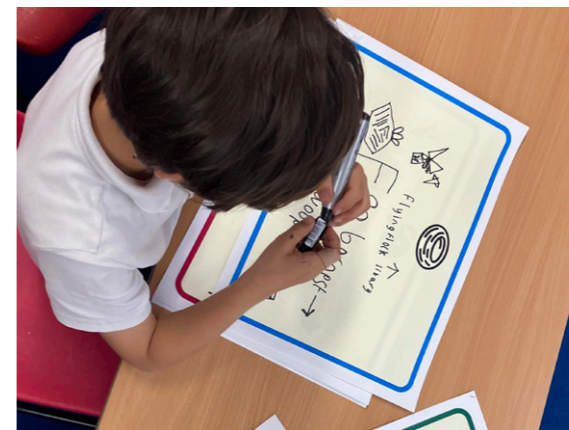
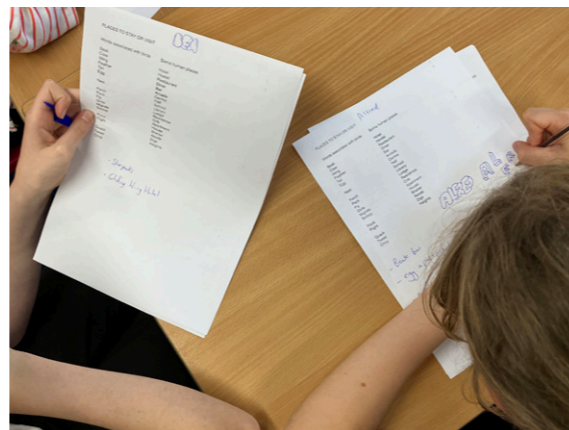
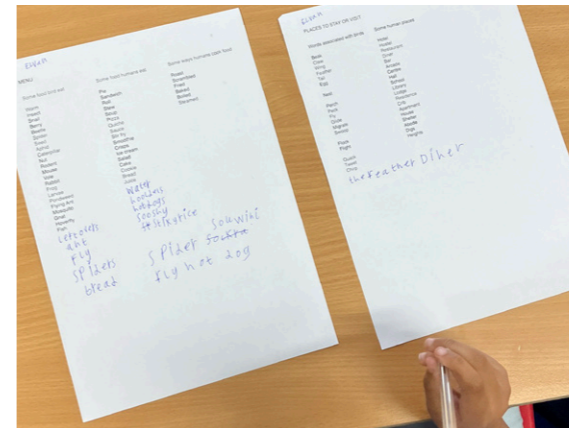
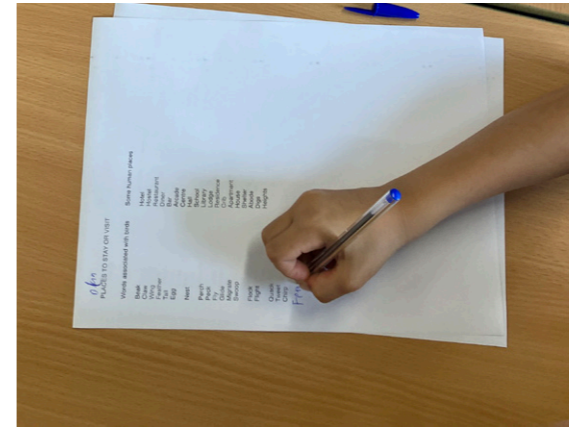
1. Site meeting with Ges Hoddinot (Lee Valley Regional Park Authority / key points: issues and challenges of placing artwork on bridge parapets; ASB problems in Coppermill Lane; poor sign-posting to the Wetlands; diversity of local wildlife and plant species.
2. On-line meeting / workshop with local residents + councillor / key points: Bird Signs idea received positively ; project ideas tie in with aspirations of LBWF "Lets Talk"; get young people engaged plus public event for local people; help promote local raingardens; retain views out from the flood relief bridge.

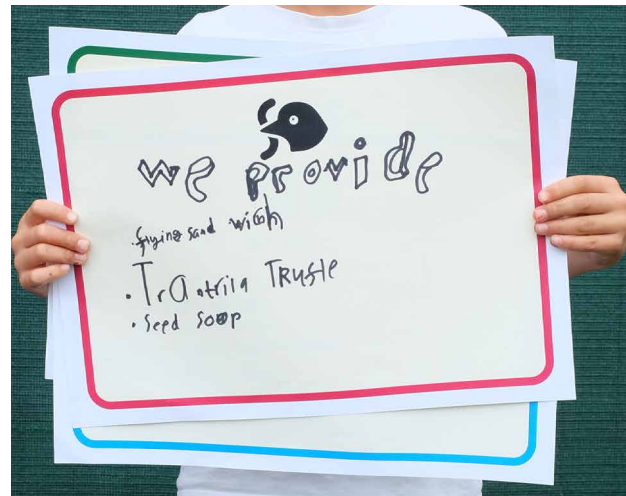
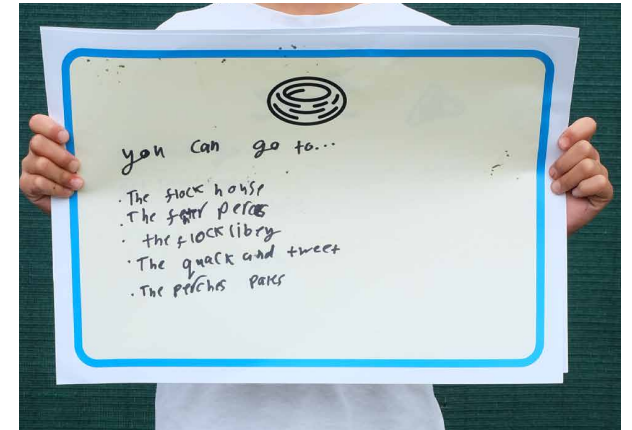
Co-creation - developing content

'Signs for Birds' creative workshops have centred on the journeys of migratory birds along the East Atlantic Flyway. Walthamstow Wetlands is connected to this 'flyway' and as a starting point our workshops considered shared species that make their temporary homes in the Coppermill area. Workshop tasks included:

- Collect words related to birds (eg. associated with diet, noises, habitats, movement)
- Collect and create words where birds might sleep, eat, meet and do their daily functions.
- Collect ideas and words that welcome or encourage birds to visit and stay at the Wetlands.
- Create three signs relating to: 1) food, habits and habitats; 2) bird places, 3) welcoming messages

Coppermill Primary School workshop
Co-creation workshop with the school's Eco-council





Coppermill Primary School workshop

The workshop was with young people, (ranging in ages from 7-11) from the school's ECO-council. The class was attended by 12 pupils.

Europa began by introducing the design team - talking about our roles and things we do as graphic designers and architects, followed by thinking about migration, bird migratory routes, and local wildlife species and places in the Coppermill Area.

Europa talked about the ideas behind 'Signs for Birds' and the class began compiling content ideas for the signs in small groups. Each class member created three individual bird signs based around the workshop tasks.

Public workshop at the Mill

The workshop took place at the Mill on Coppermill Lane and included live on-line link-ups with Slimbridge Wetland in Oxfordshire and Finima Nature Park on Bonny Island, Nigeria.

Workshop attendance included three local residents plus guest speakers from the Migratory Birds for People advisory group (MBP): Connor Walsh (WWT) and Ebuzome Chukwuike. The group discussed: 'shared bird species' that visit both the Coppermill Area and Nigeria, and ideas for content and the placing of signs.

On-going dialogue

- Tom Fewins (local resident, Head of Policy at WWT)
- Connor Walsh (international engagement officer WWT and MBP member)

Coppermill Area Scheme Public Art Workshop

Signs for Birds
Graphic designers Europa along with what if: projects will be running this free and fun workshop for all ages



Come up with fun and creative ideas with us

Learn about birds that migrate from other parts of the world to the Walthamstow Wetlands

Be part of the development of the public art

Workshop details
Saturday 20 July 2024
11.30am to 1pm
The Mill, 7-11 Coppermill Lane, London E17 7HA

Free, all welcome, just turn up at 11.30am



This project is part of the Coppermill Art Initiative which is supported by London Borough of Waltham Forest

The East Atlantic Flyway

A superhighway for migratory birds offering places for breeding and wintering. Birds from Arctic regions travel between sites along the Flyway and mix with breeding populations from Europe and Africa.



Shared Species

Common Ringed Plover
A small plover that breeds across northern Eurasia and also migrates to West Africa. Many of these in Great Britain are resident throughout the year.

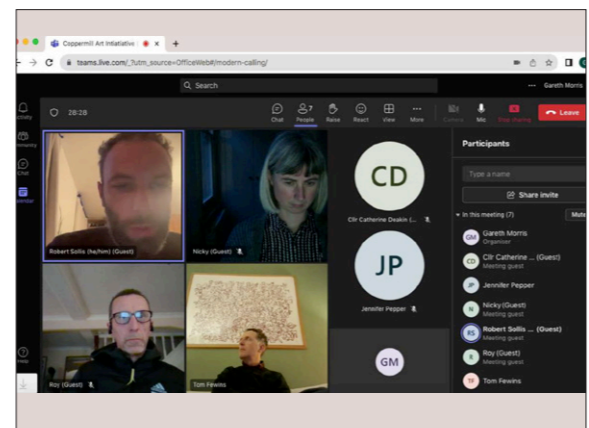
Osprey
Osprey migrate south from the UK to warmer climates for the winter, many arriving in West Africa.

Black-tailed Godwit
A widespread summer visitor to northern Europe, these birds migrate along the East Atlantic Highway to winter in West Africa.

Common Tern
Terns migrate south in late summer to wintering grounds from Spain to Africa

Red Knot
Birds forms huge flocks in winter and many Knots use UK estuaries as feeding grounds, both on migration and in winter.

Coppermill Area Scheme / Public Art workshop Bird Signs



Bird Signs meeting and workshops

Flyer, workshop prompts / information board, on-line consultation with residents, public workshop at the Mill with representatives from Wetlands in Oxfordshire and Nigeria, workshop instructions.



Coppermill Area Scheme, LB Waltham Forest Public Art Workshop

Signs for Birds

The East Atlantic Flyway is a superhighway for migratory birds offering places for breeding and wintering. Birds from Arctic regions travel between sites along the Flyway and mix with breeding populations from Europe and Africa. Walthamstow Wetlands, in London is one these sites along this busy international route.

Birds come to the Walthamstow Wetlands for a variety of reasons - to feed, to breed, to roost, to moult. The areas of open water and at different times of the year. In the winter, wildfowl come south such as waders, terns, martins, and swift, come north to breed here, returning south before winter. Others can be seen here all year.

Signs for Birds is an initiative that invites the public to get involved in the co-creation of public art in the Coppermill Area of Waltham Forest, London. The workshops invite local residents and schools in the area to come up with creative ideas for the signs together with other international communities located along the East Atlantic Flyway.

As a starting point for the workshops we will consider some of the **shared species** that make their temporary homes along the Flyway such as the:

- Red Knot,
- Osprey,
- Black-tailed Godwit,
- Common Tern.



Workshop Instructions

Signs for Birds tasks

1 Preparation:

1.1 As a group collect words related to birds (their diet, their anatomy, the noises they make, what they eat, where they might live, how they hunt, how they get around, etc.) Write down your ideas.

1.2 Like humans birds need places to eat, sleep and meet each other. Using some of the words that we have collected that relate to birds can we come up with names for e.g. : a hotel for birds, a restaurant for birds, a cafe for birds, a shop for birds, a pub for birds, a leisure centre for birds, a library or museum for birds, etc.) Write down your ideas.

1.3 What other bird signs should we make to encourage them to drop by in the Walthamstow Wetlands. (Is there a type of tree or greenery they may like, is there water around, are there things locally they should know about ?) Come up with a selection of ideas and write them down.

2 Create a sign:

2.1 Now choose one of your ideas and write it clearly in each of the three sign boards provided - This is lettering not handwriting so think about how you're lettering looks. It should be bold and clear and fill the space on the paper so it can be read from a distance.

2.2 Now take your three completed signs outside and photograph them and send them to us at: garth@what-if.info



This project is part of the Coppermill Art Initiative which is supported by London Borough of Waltham Forest. The workshops are devised by Europa and what if: projects Ltd

Lee Valley Regional Park SERVICES

The Worm Hole

The Greasy Beak

Feathered Friend Hotel

The Kings Wings

Perch Palace

The Beak and Claw

Starpecks

The Hover Hotel



**Take a break
Recharge your wings**

East Atlantic Flyway SOUTH

Baie de Somme, France	165
Urdaibai Bird Center, Spain	847
Sidi Moussa Oualidia, Morocco	1839
Banc d'Arguin, Mauritania	2305
Finima Nature Park, Nigeria	2904
Etosha Pan, Namibia	4951
Wilderness Lakes, South Africa	6008

Tweet Tweet Tweet

Caw Caw Caw Caw Caw

Squaaaaaaaaaaaaaaaaawk



↑ Walthamstow Wetlands

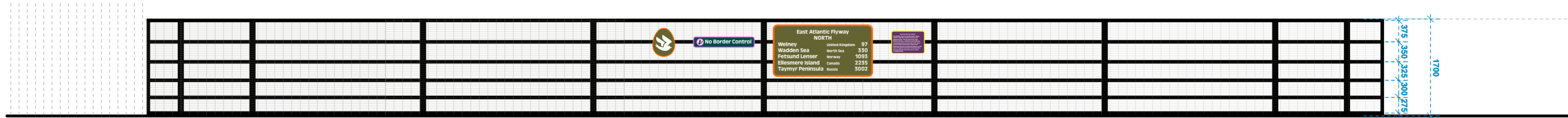


**Watch out for
tall buildings**

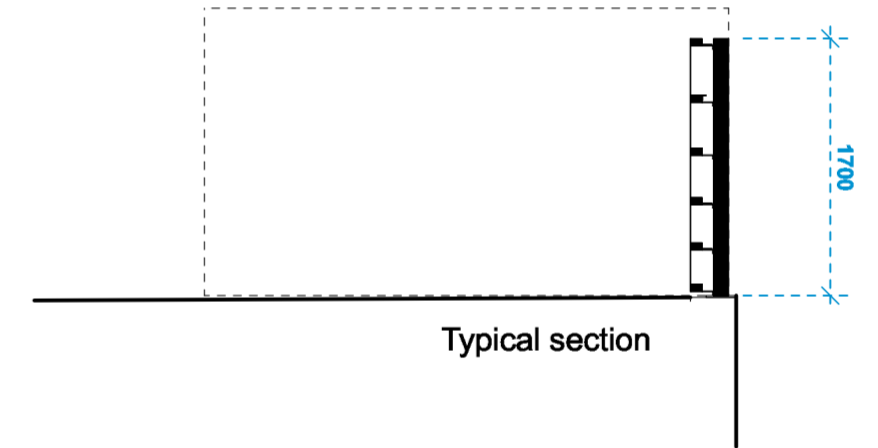
Coppermill Area Plan



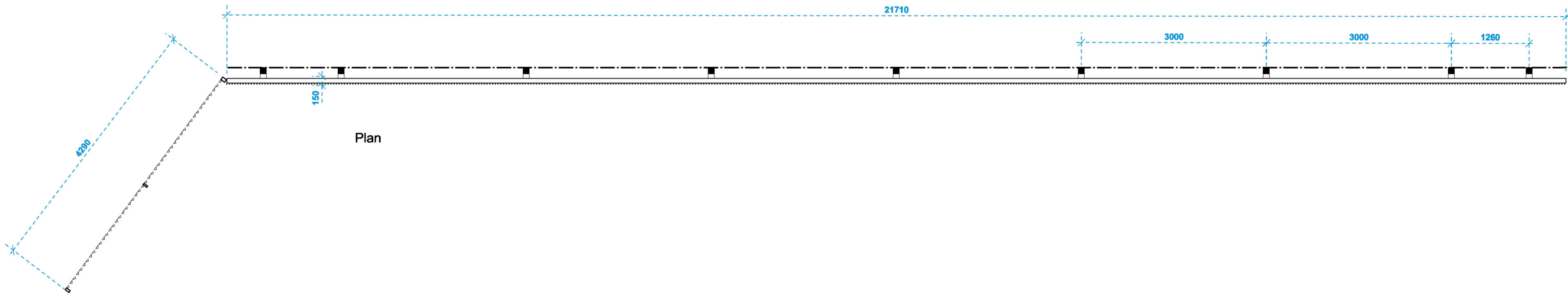
Flood relief bridge



Elevation A-A

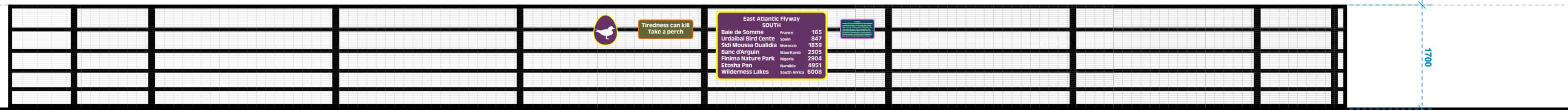


Typical section

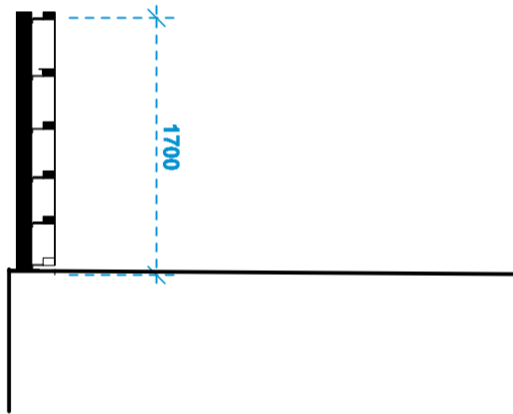


Plan

Flood relief bridge



Elevation A-A



Typical section



Plan



 **No Border Control**

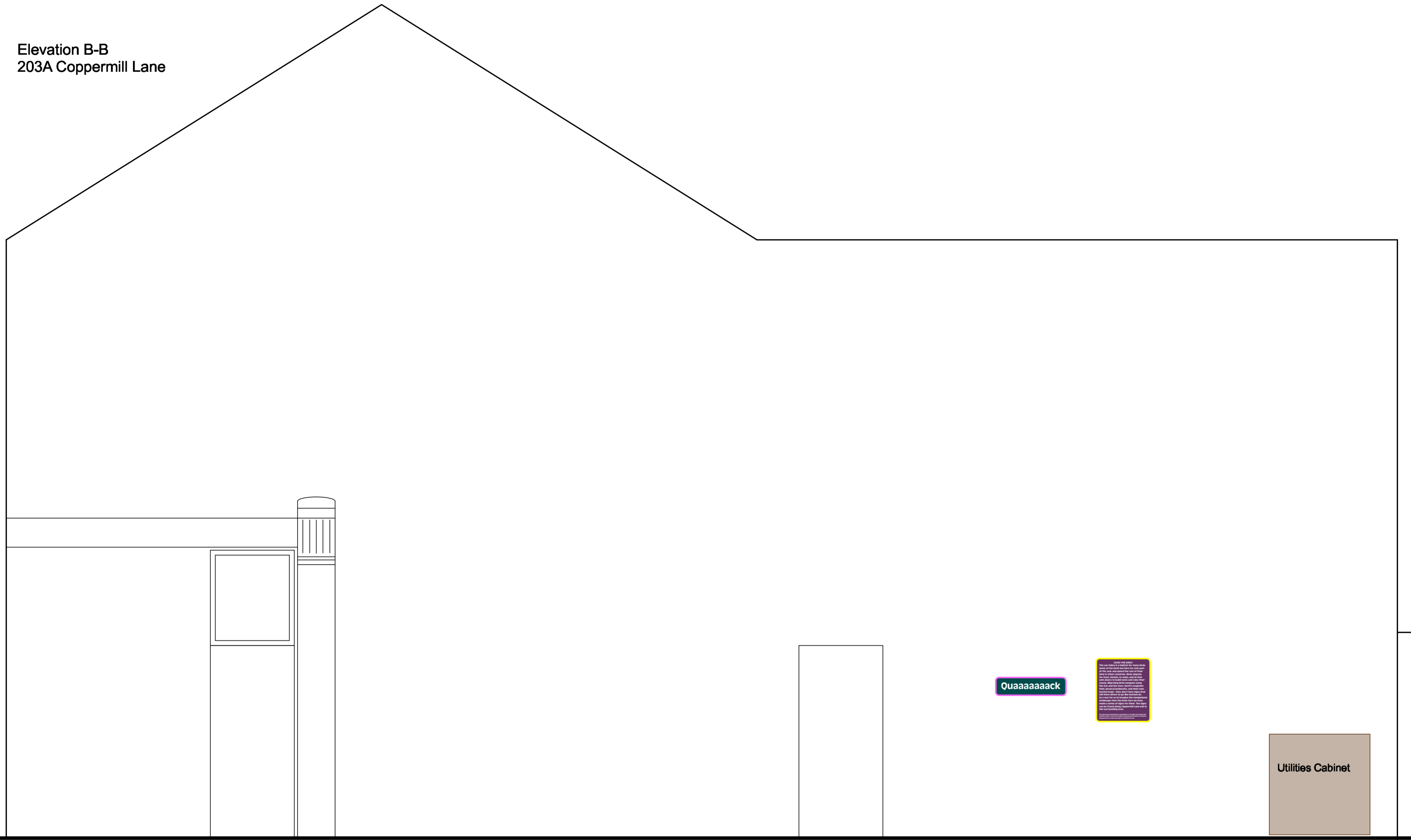
East Atlantic Flyway	
NORTH	
Welney, United Kingdom	97
Wadden Sea, Germany	330
Fetsund Lenser, Norway	1093
Ellesmere Island, Canada	2235
Taymyr Peninsula, Russia	3002

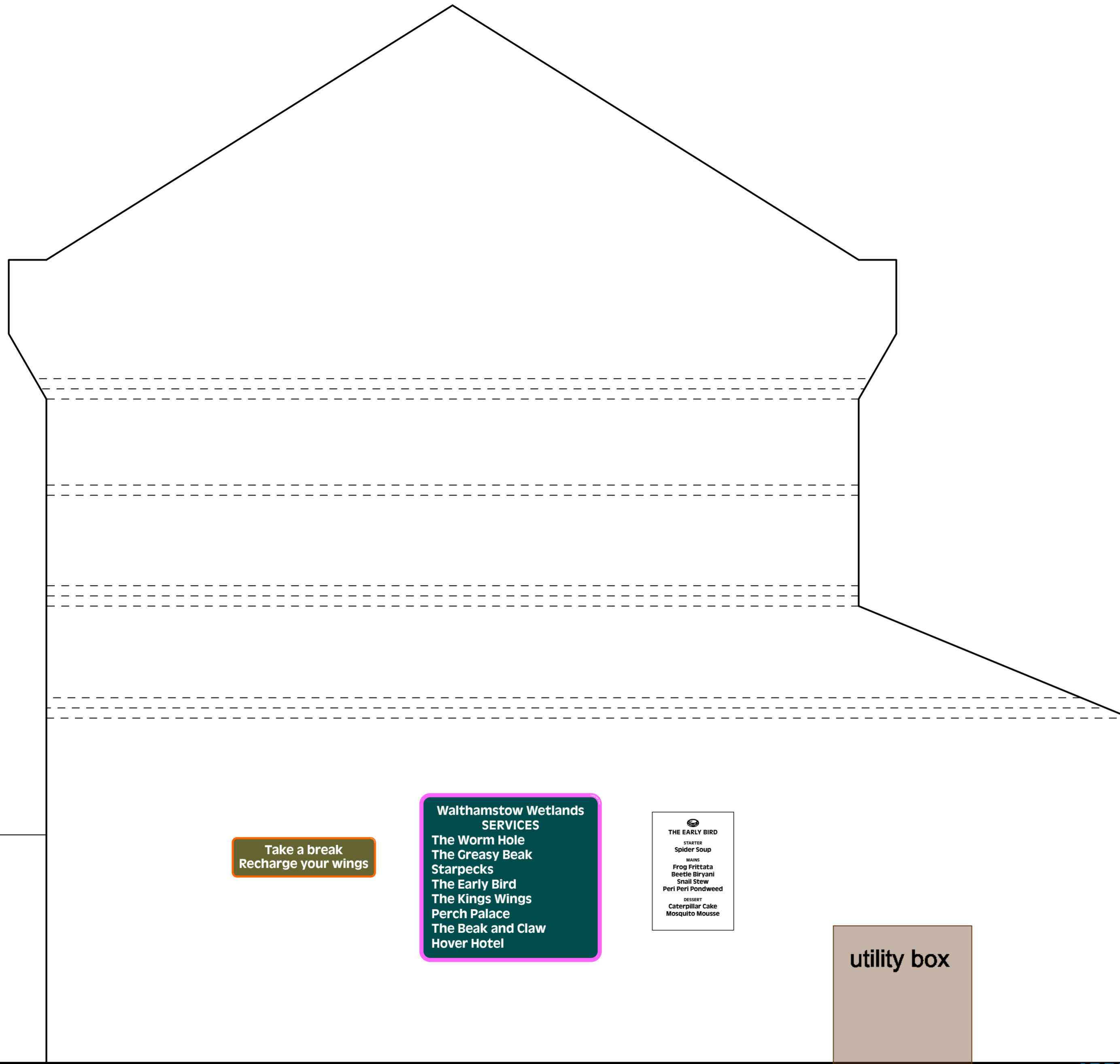
EAST ATLANTIC FLYWAY
worldwide, there are eight major routes
used by migratory birds. These are the global
flyways. This one, on the East Atlantic,
Traverses a wide bird superhighway, connecting
sites in the Arctic as far apart as the Taymyr
Peninsula in Siberia and Ellesmere Island in
northern Canada, to the neck of England and
other wintering sites through Europe and
Africa as far south as South Africa.



Elevation B-B
The Coppermill

Elevation B-B
203A Coppermill Lane





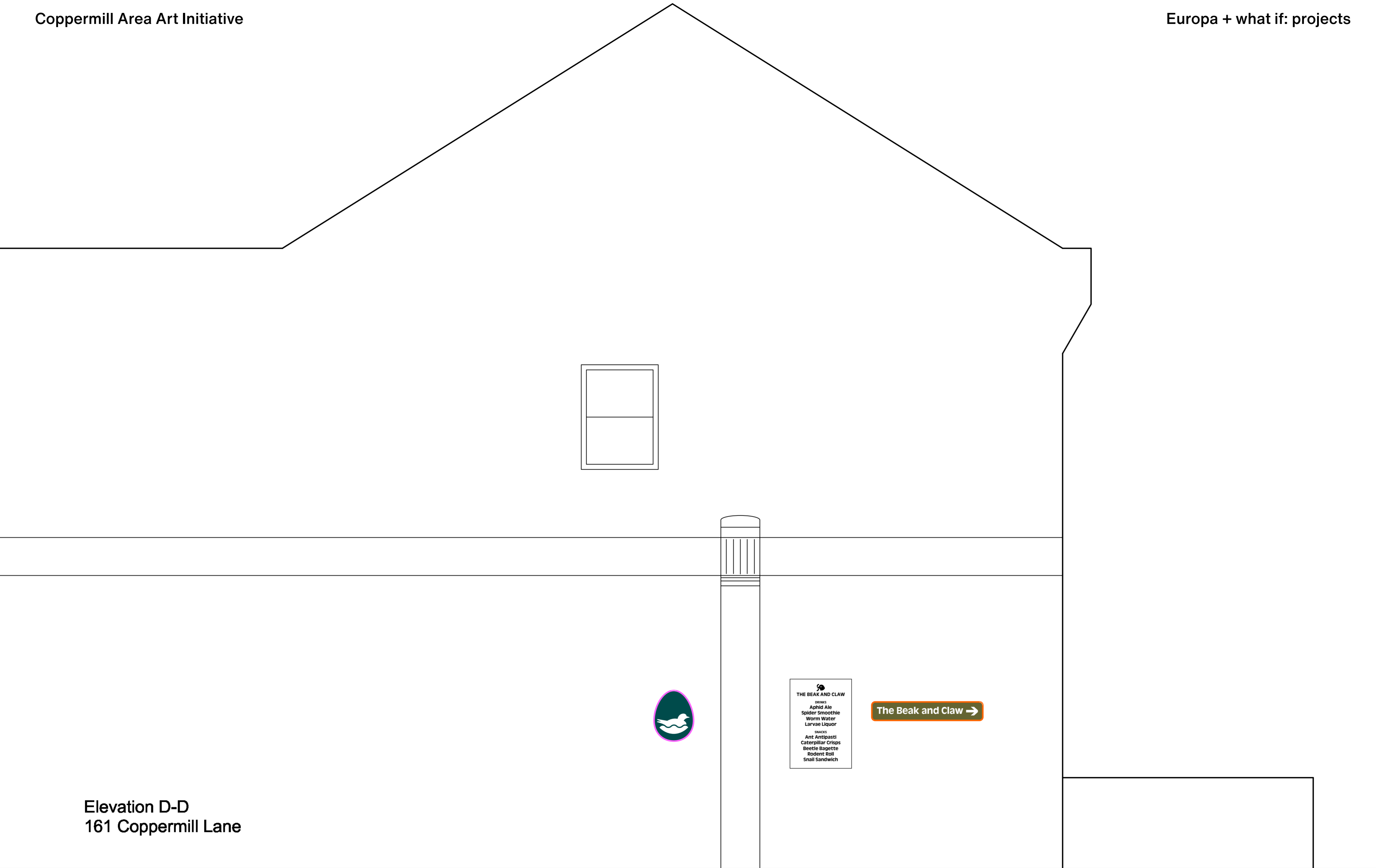
Elevation C-C
187 Coppermill Lane

Take a break
Recharge your wings

Walthamstow Wetlands
SERVICES
The Worm Hole
The Greasy Beak
Starpecks
The Early Bird
The Kings Wings
Perch Palace
The Beak and Claw
Hover Hotel

THE EARLY BIRD
STARTER
Spider Soup
MAIN
Frog Frittata
Beetle Biryani
Snail Stew
Peri Peri Pondweed
DESSERT
Caterpillar Cake
Mosquito Mousse

utility box



Elevation D-D
161 Coppermill Lane



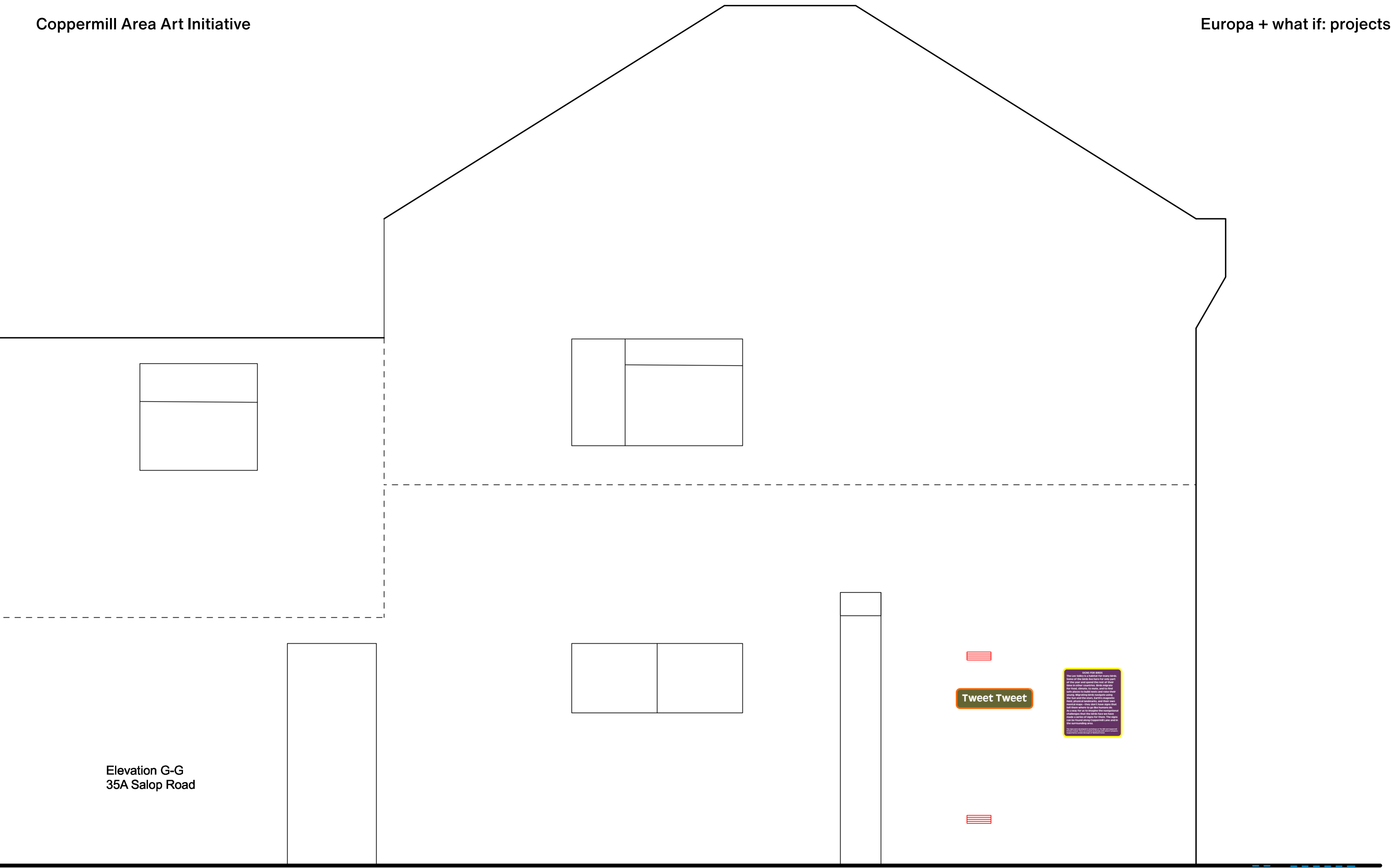
THE BEAK AND CLAW
drinks
Aphid Ale
Spider Smoothie
Worm Water
Larvae Liquor
snacks
Ant Antipasti
Caterpillar Crisps
Beetle Bagette
Rodent Roll
Snail Sandwich

The Beak and Claw →

Fly in V formation

SCHEER BIRDS
The Lox Mealy is a bird for many birds.
Some of the birds in the world for many birds.
of the air and spend the rest of their
time in their habitats. In the process
for food, energy, to mate, and to find
and ground to their birds and their
young. Migrating birds migrate using
the sun and the stars. Signs in nature
and physical landmarks, and their own
internal maps. They don't have maps that
we think of as maps. They don't have
a map where to go like humans do.
Instead for us to learn the geographical
characteristics of the world and we don't
make a series of signs for them. The signs
are for birds along Coppermill Lane and in
the surrounding area.

Elevation E-E
Coppermill School boundary fence, Edward Road



Elevation G-G
35A Salop Road