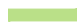




GREEN LINKS

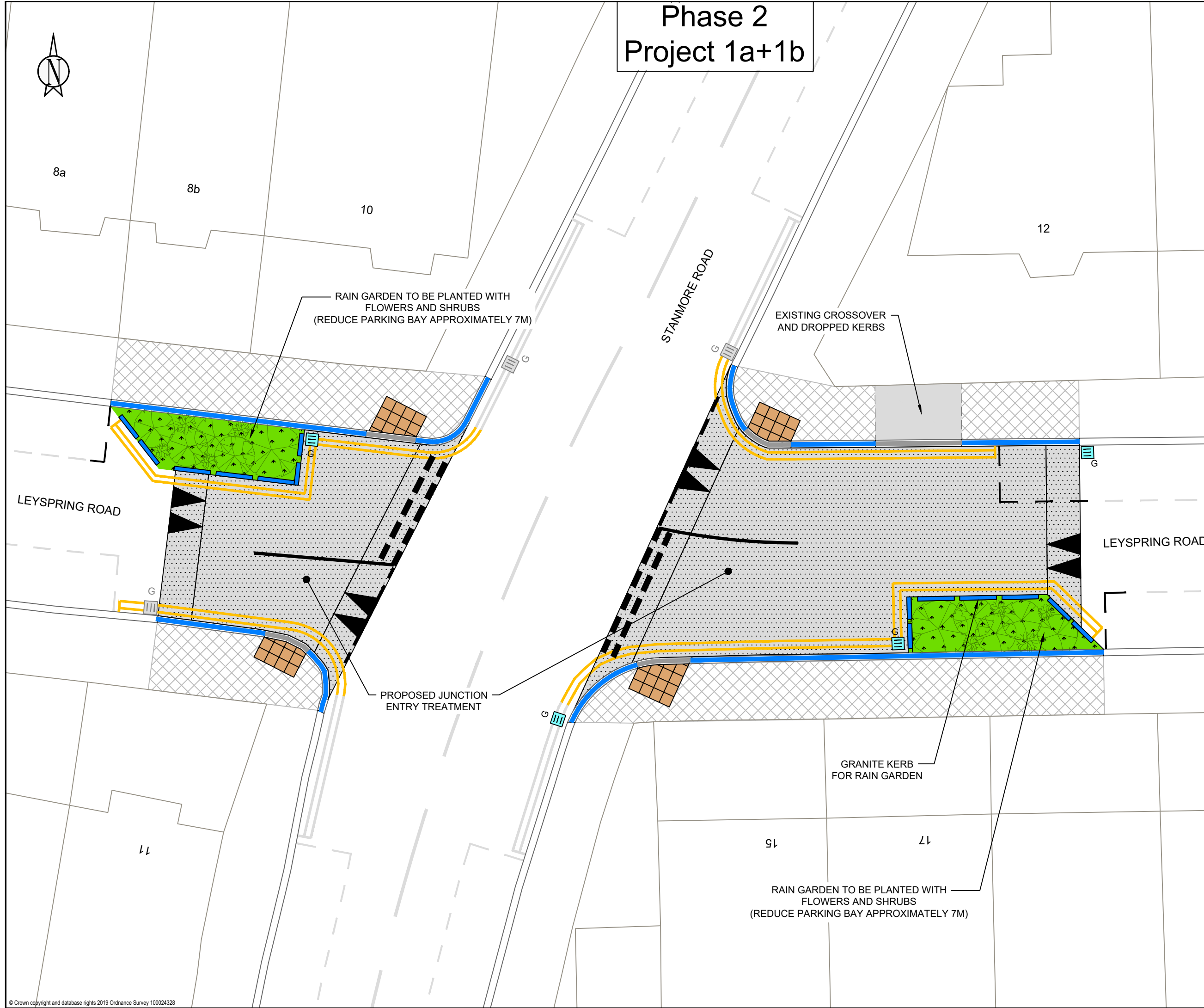
PHASE 2 - PROJECT LIST

- Project 1a - Leyspring Road junction with Stanmore Road (West)
- Project 1b - Leyspring Road junction with Stanmore Road (East)
- Project 2 - Leyspring Road junction with Woodville Road
- Project 3 - Michael Road junction with Mornington Road
- Project 4 - Lister Road junction with Mornington Road
- Project 5 - Ferndale Road (Refresh)

-  Hornbeam and Lime Link
-  Green Links - Phase 1 Projects
-  Green Links - Phase 2 Projects



Phase 2 Project 1a+1b



- KEY:**
- EXISTING ROAD MARKINGS
 - EXISTING GULLY
 - PROPOSED GULLY
 - FOOTWAY TO BE REINSTATED
 - PROPOSED RAISED TABLE
 - PROPOSED DROPPED KERB
 - PROPOSED WHITE ROAD MARKINGS
 - PROPOSED YELLOW ROAD MARKINGS
 - PROPOSED KERB TO BE RELAID
 - PROPOSED GRANITE KERBS
 - PROPOSED BUFF TACTILES
 - PROPOSED RAIN GARDEN
 - PROPOSED PLANTING

TITLE
GREEN_LINKS_PHASE_002
 PUBLIC_REALM_IMPROVEMENT
 LEYTONSTONE

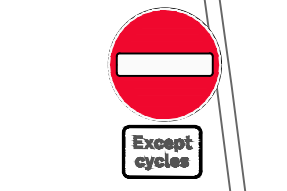
LONDON BOROUGH OF WALTHAM FOREST

Engineering Design
 Group

 Low Hall
 Argall Ave
 Leyton
 London E10 7AS.

Phase 2 Project 2

- KEY:**
-  EXISTING ROAD MARKINGS
 -  EXISTING GULLY
 -  PROPOSED GULLY
 -  FOOTWAY TO BE REINSTATED
 -  PROPOSED RAISED TABLE
 -  PROPOSED DROPPED KERB
 -  PROPOSED WHITE ROAD MARKINGS
 -  PROPOSED YELLOW ROAD MARKINGS
 -  PROPOSED KERB TO BE RELAID
 -  PROPOSED GRANITE KERBS
 -  PROPOSED BUFF TACTILES
 -  PROPOSED RAIN GARDEN
 -  PROPOSED PLANTING



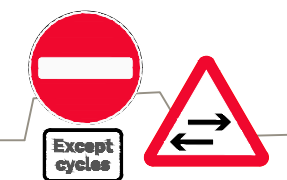
NO ENTRY & EXCEPT CYCLES SIGNS TO BE INSTALLED ON NEW POST

RAIN GARDEN TO BE PLANTED WITH FLOWERS AND SHRUBS (REDUCE PARKING BAY APPROXIMATELY 7M)

PROPOSED JUNCTION ENTRY TREATMENT

LEYSRING ROAD

WOODVILLE ROAD



NO ENTRY & EXCEPT CYCLES SIGNS TO BE INSTALLED ON NEW POST

TITLE
GREEN_LINKS_PHASE_002
PUBLIC_REALM_IMPROVEMENT
LEYTONSTONE

LONDON BOROUGH OF WALTHAM FOREST

Engineering Design
Group

Low Hall
Argall Ave
Leyton
London E10 7AS.

40

42

44

49

51

Phase 2 Project 3



RAIN GARDEN TO BE PLANTED WITH
FLOWERS AND SHRUBS
(REDUCE PARKING BAY APPROXIMATELY 7M)

PROPOSED JUNCTION
ENTRY TREATMENT

MICHAEL ROAD

MORNINGTON ROAD

WOODBRIDGE HOUSE

- KEY:**
-  EXISTING ROAD MARKINGS
 -  EXISTING GULLY
 -  PROPOSED GULLY
 -  FOOTWAY TO BE REINSTATED
 -  PROPOSED RAISED TABLE
 -  PROPOSED DROPPED KERB
 -  PROPOSED WHITE ROAD MARKINGS
 -  PROPOSED YELLOW ROAD MARKINGS
 -  PROPOSED KERB TO BE RELAID
 -  PROPOSED GRANITE KERBS
 -  PROPOSED BUFF TACTILES
 -  PROPOSED RAIN GARDEN
 -  PROPOSED PLANTING

TITLE
GREEN_LINKS_PHASE_002
PUBLIC_REALM_IMPROVEMENT
LEYTONSTONE

LONDON BOROUGH OF WALTHAM FOREST

Engineering Design
Group

Low Hall
Argall Ave
Leyton
London E10 7AS.

64

84

19

86

Phase 2 Project 4



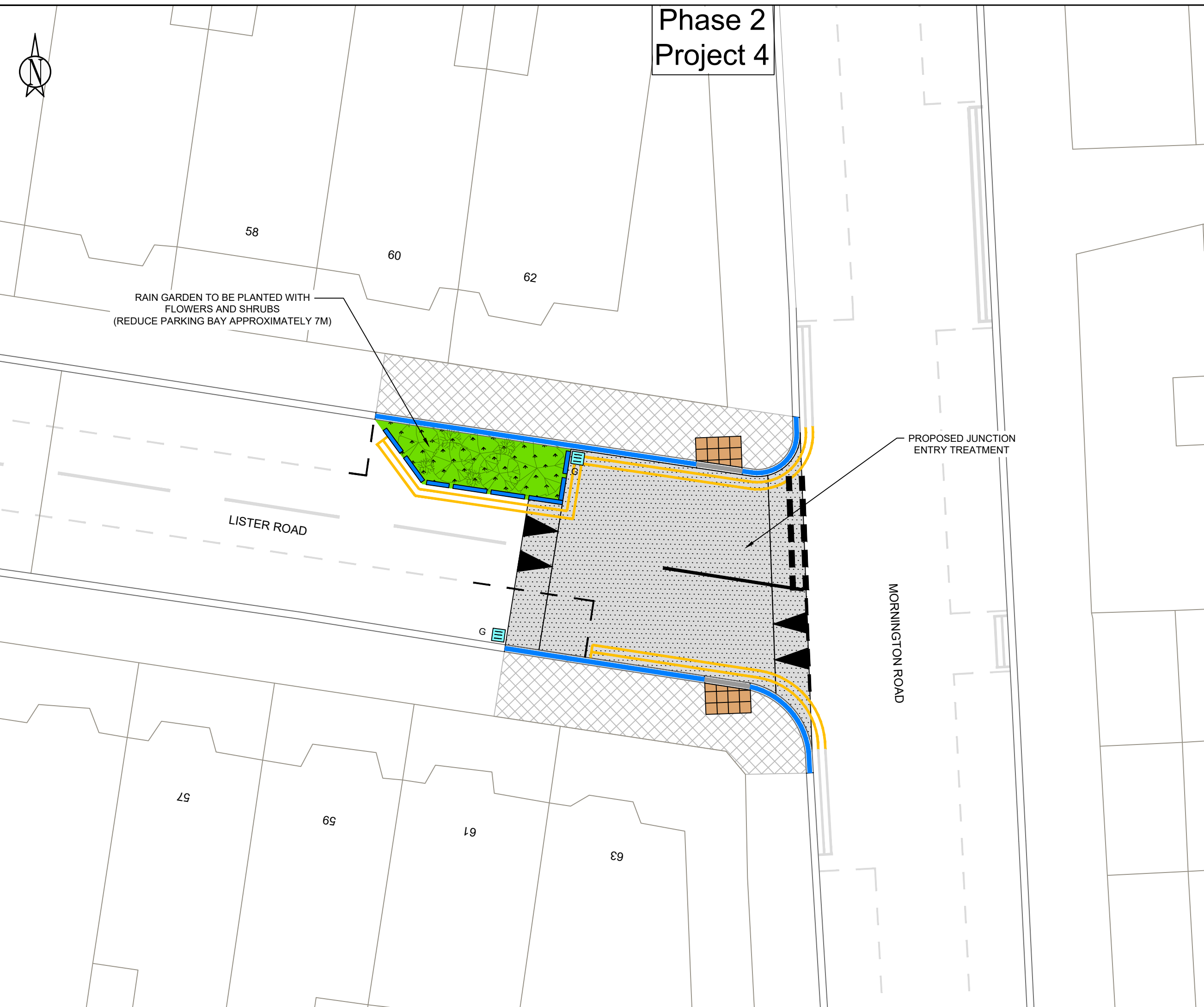
- KEY:**
-  EXISTING ROAD MARKINGS
 -  EXISTING GULLY
 -  PROPOSED GULLY
 -  FOOTWAY TO BE REINSTATED
 -  PROPOSED RAISED TABLE
 -  PROPOSED DROPPED KERB
 -  PROPOSED WHITE ROAD MARKINGS
 -  PROPOSED YELLOW ROAD MARKINGS
 -  PROPOSED KERB TO BE RELAID
 -  PROPOSED GRANITE KERBS
 -  PROPOSED BUFF TACTILES
 -  PROPOSED RAIN GARDEN
 -  PROPOSED PLANTING

RAIN GARDEN TO BE PLANTED WITH
FLOWERS AND SHRUBS
(REDUCE PARKING BAY APPROXIMATELY 7M)

PROPOSED JUNCTION
ENTRY TREATMENT

LISTER ROAD

MORNINGTON ROAD



TITLE
GREEN_LINKS_PHASE_002
PUBLIC_REALM_IMPROVEMENT
LEYTONSTONE

LONDON BOROUGH OF WALTHAM FOREST

Engineering Design
Group

Low Hall
Argall Ave
Leyton
London E10 7AS.

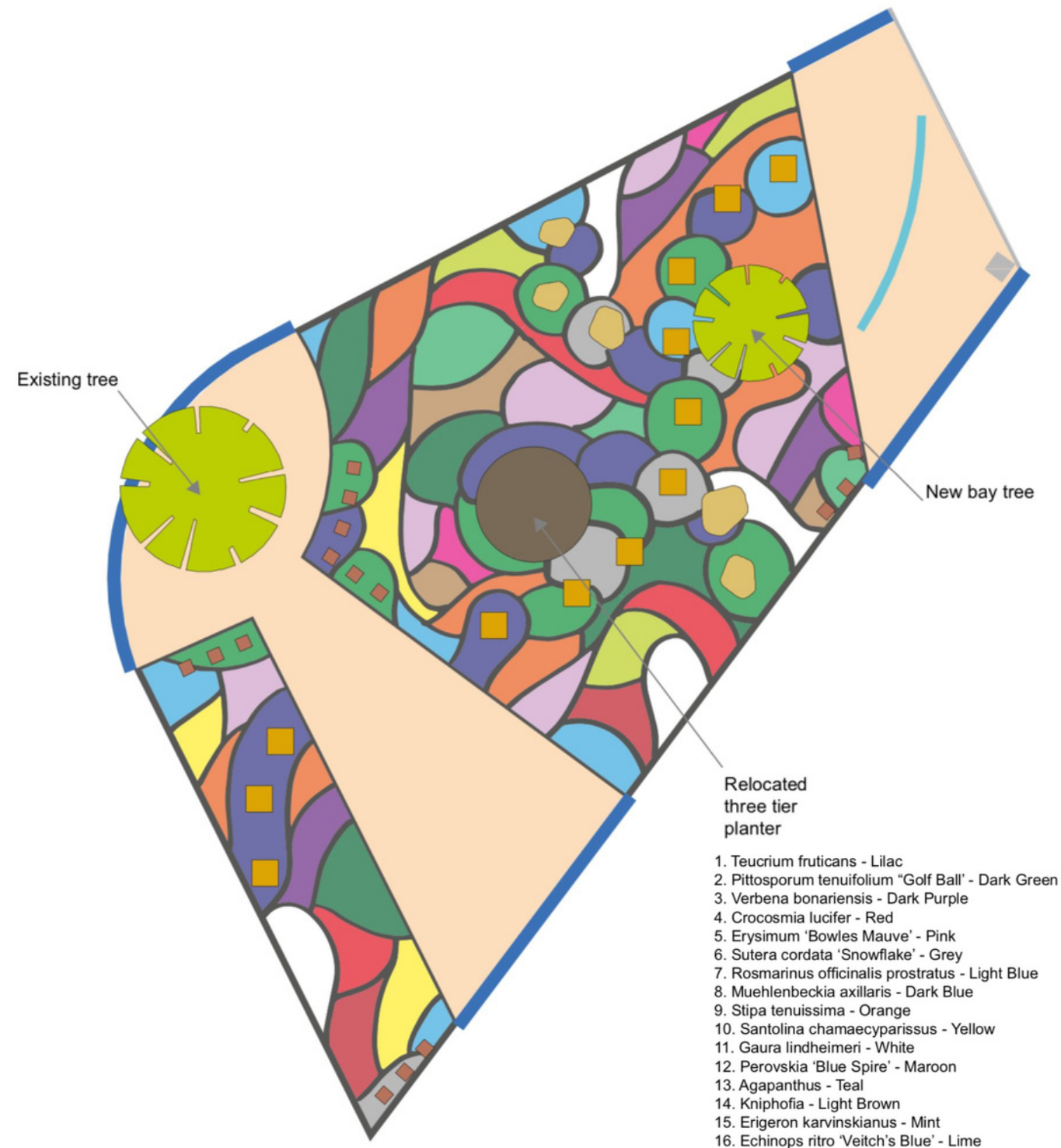


SUDS & RAIN GARDEN PLANTING SCHEME GUIDE

PLANT GUIDE

CHOOSING PLANTS FOR THE RAIN GARDEN

Creating a successful Sustainable Drainage System (SuDS) Rain Garden involves thoughtful selection of plants that not only enhance the aesthetic appeal but also contribute to the functionality and ecological balance of the system. The right combination of flowering plants, grasses, ground cover, shrubs, and trees plays a crucial role in achieving the goals of stormwater management, biodiversity promotion, and overall environmental sustainability.



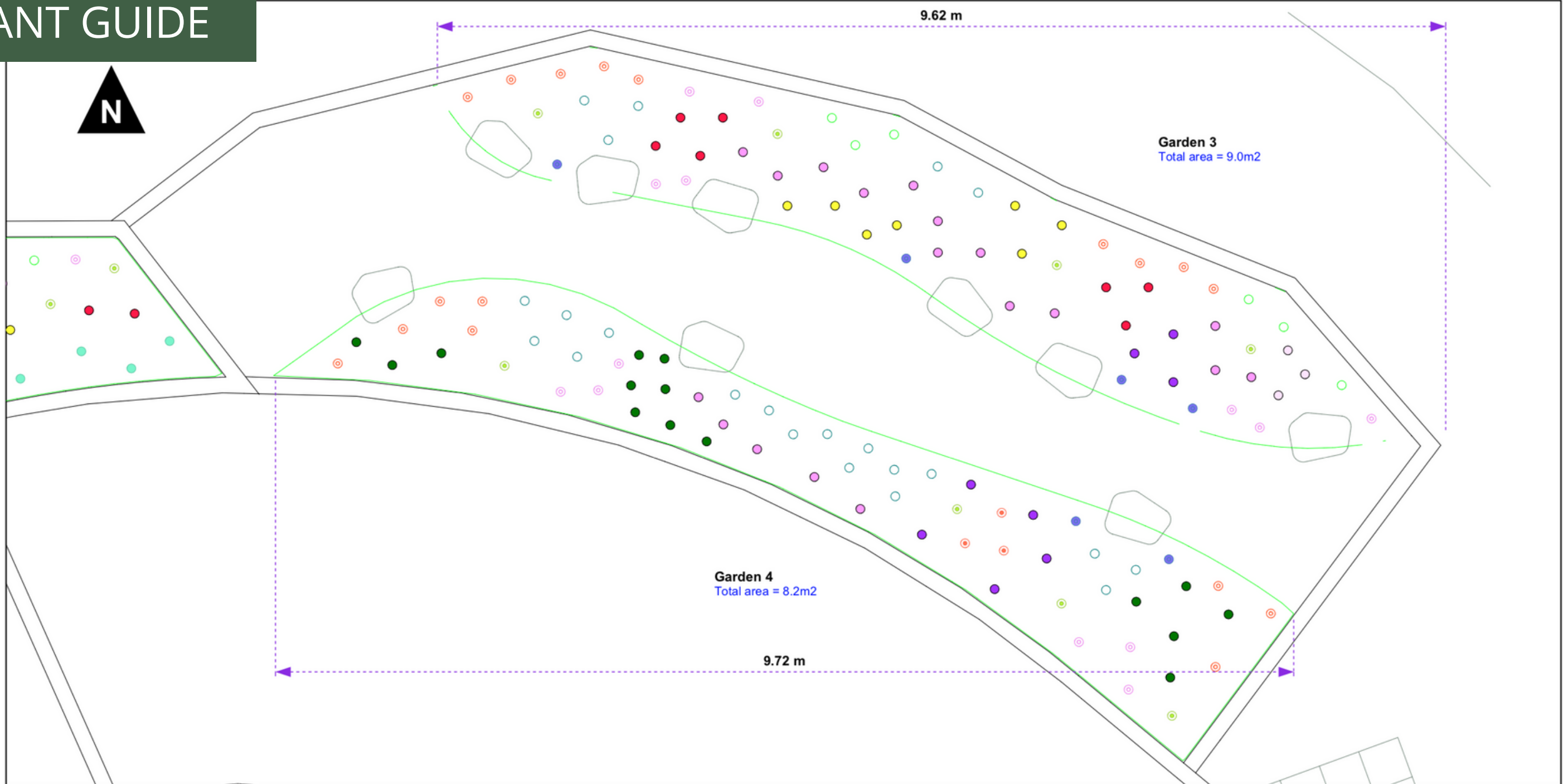
CONSIDERATIONS FOR PLANT SELECTION:

Ideally, the Rain Garden is designed as an integral part of the landscape design, choosing not only its location but also its shape and the plant species you use.

We recommend planting a variety of different species, known for their hardiness to both drought conditions and flash flooding. Species found in wetland conditions, as well as marginal species, can really benefit the space, coping well with large amounts of water in a short period of time. We also try to plant native species, which are well adapted to the climate, coping well with our seasons, as well as supporting local wildlife including birds, pollinating insects and other invertebrates.

- **Adaptability to Moisture Levels:** Plants need to tolerate both wet and dry conditions so choosing plants that can survive a variety of moisture conditions is essential.
- **Root System Characteristics:** Water absorption and erosion prevention are facilitated by deep-rooted plants, contributing to the overall health of the rain garden.
- **Biodiversity and Ecological Functionality:** A rich ecosystem is encouraged by aiming for a diverse plant palette.
- **Seasonal Interest:** Consideration of the colour, texture, and form of plants contributes to a visually pleasing and dynamic landscape.
- **Maintenance Requirements:** Plants with low maintenance needs should be chosen to ensure the longevity and efficiency of the rain garden.
- **Pollution Tolerance:** Plants with a tolerance for potential contaminants should be selected, given the rain garden's role in treating stormwater runoff. Some species, particularly effective at filtering pollutants, contribute to the water purification process.
- **Local Regulations and Guidelines:** Familiarity with local regulations and guidelines for planting in SuDS is essential.

PLANT GUIDE



Key:

Perennials:

- Rudbeckia
- Perovskia
- Sage
- Teucrium
- Verbena
- Salvia Nemorosa
- Camas
- Pittosporum
- Salvia 'Hot Lips'
- Crocosmia
- Vinca minor
- Miscanthus
- Geranium
- Geum
- Carex

Schedule: Garden 3 and 4

Perennials:

Notes: Garden 3 -Total planting area = 9.0m2 / 1-3 Litre pots minimum / 5-7 plants per m2. 66 Plants.

Garden 4 -Total planting area = 8.2m2 / 1-3 Litre pots minimum / 5-7 plants per m2. 64 Plants.

1. Rudbeckia fulgida var. deamii / Height: 60cm Spread: 45cm / Foliage: Deciduous
2. Perovskia 'Blue Spire' / Height: 1.2m Spread: 1m / Foliage: Deciduous
3. Salvia officinalis, sage / Height: 75cm Spread: 1m / Foliage: Deciduous
4. Teucrium fruticans / Height: 1.2m Spread: 1.2m / Foliage: Evergreen
5. Verbena bonariensis / Height: 60cm Spread: 60cm / Foliage: Deciduous
6. Salvia nemorosa 'Amethyst' / Height: 50cm Spread: 30cm / Foliage: Deciduous
7. Camassia quamash, Camas/ Height: 60cm Spread: 30cm / Foliage: Deciduous
8. Pittosporum tenuifolium Bannow Bay / Height: 1m Spread: 80cm / Foliage: Evergreen
9. Salvia x jamensis 'Hot Lips' / Height: 90cm Spread: 60cm / Foliage: Deciduous
10. Crocosmia 'Lucifer' - montbretia / Height: 1.5m Spread: 50cm / Foliage: Deciduous
11. Vinca minor 'Azurea Flore Pleno' / Height: 10cm Spread: 1.5m / Foliage: Evergreen
12. Miscanthus sinensis 'Morning Light' (Chinese Silver Grass) / Height: 1.2m Spread: 1.2m / Foliage: Deciduous
13. Geranium pratense (Meadow Cranesbill) / Height: 90cm Spread: 60cm / Foliage: Deciduous
14. Geum chiloense 'Red Dragon' / Height: 40cm Spread: 30cm / Foliage: Evergreen
15. Pendulous Sedge (Carex pendula) / Height: 1.5m Spread: 1m / Foliage: Evergreen

Typology 1: Grasses, flowering herbs and ferns.

A broad range of flowering plants, grasses and ground cover that area suitable for SUDs planting.



**ALCHEMILLA MOLLIS -
GARDEN LADY'S-MANTLE**

An herbaceous perennial forming a clump of softly hairy, light green leaves with scalloped and toothed edges. Small, bright yellow flowers.

Height: 60 cm



**AGAPANTHUS
AFRICAN LILY**

Agapanthus have mounds of strappy, bright green leaves. Sturdy stems shoot up in summer carrying loosely spherical heads of trumpet-shaped flowers.

Height: 1 m



**ASTER × FRIKARTII
'MÖNCH'**

'Mönch' is a vigorous, clump-forming perennial, with strong, well-branched stems. Bears loose clusters of long-lasting flowers, in late summer and early autumn.

Height: 70 cm



**CALAMAGROSTIS -
FEATHER REED GRASS**

'Karl Foerster' is a clump-forming deciduous perennial grass with flat, arching leaves, and bronze flowering panicles that fade to pale brown.

Height: 90 cm



**CAREX PRAIRIE FIRE -
ORANGE NEW ZEALAND
SEDE**

A dense, tufted, evergreen perennial grass with narrow bright green strap-like leaves tipped with bright orange. The foliage turns a darker orange in the autumn.

Height: 50 cm



**CAREX REMOTA -
REMOTE SEDE**

Forms dense semi-evergreen tussocks of very thin, long, arching pale to bright green leaves. Drooping flower stems carry yellow-green flowers during early summer.

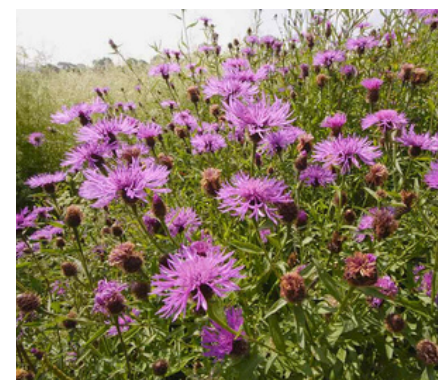
Height: 50 cm



**CAREX RIPARIA -
GREATER POND SEDE**

A vigorously spreading rhizomatous perennial with linear, glaucous green leaves and tall stems bearing stout, erect, dark brown flowering spikes in early summer

Height: 125 cm



**CENTAUREA NIGRA -
BLACK KNAPWEED**

An upright, branching perennial, with simple or pinnately lobed leaves and thistle-like purple flowerheads to 4 cm across.

Height: 75 cm



CROCOSMIA 'LUCIFER'

A cormous, herbaceous perennial with a robust and very upright growing habit. It has mid-green, pleated blade-like leaves and arching deep red flower stems.

Height: 160 cm



**CYNARA CARDUNCULUS -
CARDUON**

Huge, purple, thistle-like flowers from June to September held above enormous clumps of deeply-cut, silvery-green leaves.

Height: 1.5 m



**ECHIUM VULGARE -
VIPER'S BUGLOSS**

An erect, bristly biennial to 75cm, with lance-shaped, hairy leaves and dense cylindrical spikes of bell-shaped violet-blue flowers in early summer.

Height: 100 cm



**EURYBIA × HERVEYI -
ASTER TWILIGHT**

Self-supporting, branching stems, carrying a profusion of light-blue daisy flowers, 5 cm across. Flowering late summer and autumn.

Height: 100 cm

Typology 1: Grasses, flowering herbs and ferns.

A broad range of flowering plants, grasses and ground cover that area suitable for SUDs planting.



ERYNGIUM - SEA HOLLY

A herbaceous perennial with strongly toothed leaves and branching violet-blue stems bearing cone-like flowerheads surrounded by narrow, spiny, metallic-blue bracts

Height: 90 cm



GERANIUM PHAEUM - MOURNING WIDOW

An erect, clump-forming perennial with lobed leaves often with brownish markings, and flat, outward-facing dusky purple, lilac or white flowers 2cm wide in late spring.

Height: 50 cm



GERANIUM ROZANNE

A vigorous spreading perennial with neat, dense, lobed leaves and saucer-shaped violet-blue flowers 5cm wide, opening from early summer to early autumn.

Height: 60 cm



GEUM 'MRS J. BRADSHAW'

'Mrs J. Bradshaw' is a clump-forming herbaceous perennial, with hairy, dark green, basal leaves and purple stems bearing semi-double, rich scarlet flowers.

Height: 60 cm



HAKONECHLOA MACRA - JAPANESE FOREST GRASS

Perennial grass producing mounds of bright green leaves topped by airy sprays of green flowers in mid- to late summer. Leaves develop red-brown tints in autumn.

Height: 50 cm



HELENIUM LOYSDER WIECK - SNEEZEWEED

Sun-loving perennials are tough, hardy and easy to grow. They combine particularly well with grasses and other late-flowering perennials plantings.

Height: 100 cm



HEMP AGRIMONY

A vigorous upright perennial with reddish stems, leaves palmately-divided into narrow leaflets, and clusters of tiny pink or purple flowers in late summer and early autumn.

Height: 100 cm



HYSSOPUS OFFICINALIS

A compact, spreading, semi-evergreen sub-shrub with erect shoots bearing aromatic, linear leaves and terminal spikes of tubular blue flowers in summer and early autumn.

Height: 50 cm



KNAUTIA MACEDONICA - MACEDONIAN SCABIOUS

A clump-forming perennial with simple or lobed stem leaves, with a succession of deep crimson pincushion-like flowerheads 3-4cm across, from mid to late summer.

Height: 80 cm



LAVANDULA ANGUSTIFOLIA - ENGLISH LAVENDER

'Hidcote' is a bushy dwarf evergreen shrub with narrow, silvery-grey leaves and small deep violet-purple flowers in dense, aromatic spikes 3-4cm in length.

Height: 50 cm



MISCANTHUS SINENSIS - EULALIA MORNING LIGHT

'Morning Light' is a compact deciduous perennial with narrow leaves finely edged with white, and pink-tinged panicles of flowers in autumn.

Height: 150 cm



MUEHLENBECKIA - MAIDENHAIR VINE

Forming lots of thin, wiry stems, which are clothed in small dark green leaves, this fast-growing deciduous plant can be grown as either groundcover or a climber.

Height: 2 m

Typology 1: Grasses, flowering herbs and ferns.

A broad range of flowering plants, grasses and ground cover that area suitable for SUDs planting.



OSMUNDA REGALIS - ROYAL FERN

A robust deciduous fern forming a large clump of fronds, bearing rusty-brown spore-bearing pinnae at the tips; foliage turns attractive red-brown in autumn.

Height: 150 cm



PEROVSKIA ATRIPLICIFOLIA 'BLUE SPIRE' - RUSSIAN SAGE

A small deciduous sub-shrub, with white stems. Small violet-blue flowers in large plummy panicles in late summer and autumn.

Height: 120 cm



PHORMIUM - NEW ZEALAND FLAX

Phormiums are exotic-looking evergreen perennials. They offer striking, often highly-coloured sword-like leaves and slender flower spikes.

Height: 2 m



SALVIA OFFICINALIS

S. officinalis is a bushy, spreading evergreen shrub, with very aromatic, finely veined, grey-green leaves and short spikes of pale blue flowers in early summer.

Height: 75 cm



SALVIA ROSMARINUS - ROSEMARY

A bushy shrub with a dense, leafy habit. Flowers usually pale violet-blue and white. Flowering starts in spring but is often repeated at different times of year.

Height: 150 cm



SALVIA VERBENACA - EYE-SEED

A mound forming perennial with mid-green coarse textured foliage and slender spikes with whorls of violet-blue lipped flowers in summer found in wild meadows.

Height: 50 cm



SANGUISORBA MINOR - SALAD BURNET

A herbaceous perennial with pairs of toothed leaflets which form a rosette. Knobbly clusters of crimson flowers, blooming from early summer through to autumn.

Height: 50 cm



SANTOLINA CHAMAECYPARISSUS - LAVENDER-COTTON

S. chamaecyparissus is a dwarf evergreen shrub with narrow, silvery-woolly, much dissected leaves and long-stalked, button-like bright yellow flowerheads.

Height: 50 cm



STIPA GIGANTEA - GOLDEN OATS

S. gigantea is a robust tufted evergreen grass to 2m, with arching linear green leaves and large panicles of oat-like, long-awned purplish flowers which ripen to gold.

Height: 200 cm



STIPA TENUISSIMA - MEXICAN FEATHER GRASS

S. tenuissima is a deciduous grass, forming a compact upright tuft of thread-like leaves, with narrow, arching, feathery flowering panicles in summer.

Height: 60 cm



VERBENA BONARIENSIS LOLLIPOP - PURPLE TOP 'LOLLIPOP'

'Lollipop' is a dwarf cultivar. It is a short-lived perennial with rough stems and leaves, and dense clusters of small, purple flowers in summer and autumn.

Height: 60 cm

Typology 2: Shrubs

Shrubs are of greatest value to wildlife and have other positive impacts on filtering dust and pollution from streets.



**BRACHYGLOTTIS
COMPACTA 'SUNSHINE'**

'Sunshine' is a small, spreading evergreen shrub with greyish, white-felted beneath like the flowers stalks. Bright yellow flowers 2.5cm in width, in loose clusters.

Height: 150 cm



**CONVOLVULUS
CNEORUM**

Silverbush - A small spreading evergreen shrub,, with narrowly oblong, very silvery leaves and funnel-shaped white flowers tinged pink in bud, up to 4cm in width

Height: 60 cm



HEBE 'MRS WINDER'

A spreading evergreen small shrub with narrow, dark green leaves, the youngest tinged with reddish-brown. Flowers small, violet-blue, in racemes to 7cm in length

Height: 75 cm



**PITOSPORUM TENUIFOLIUM
BANOWAY BAY**

Compact well branched mound forming Pittosporum with colour changing foliage starting off light green with a cream edge and changing through late summer.

Height: 1 m



TEUCRIUM FRUTICANS

Tree germander - T. fruticans is an evergreen shrub with white hairy stems bearing small, dark green leaves, white beneath, and light blue flowers 2.5cm long in summer.

Height: 150 cm



SUDS & RAIN GARDEN PLANTING SCHEME GUIDE